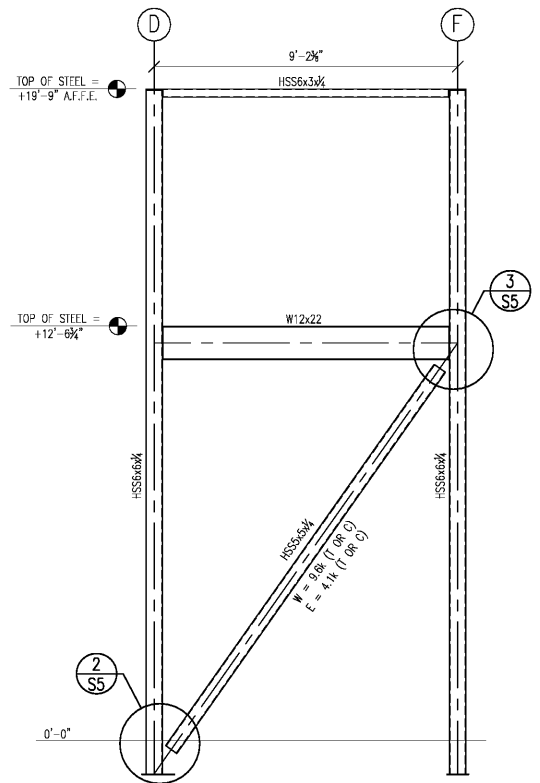
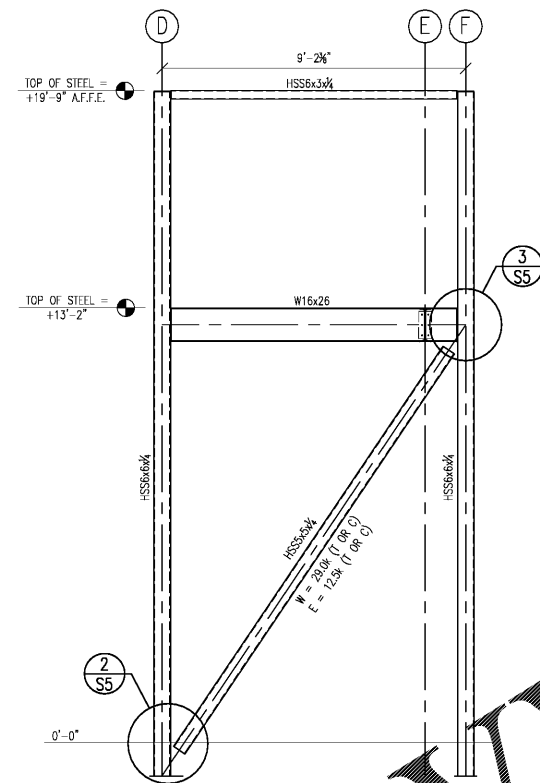


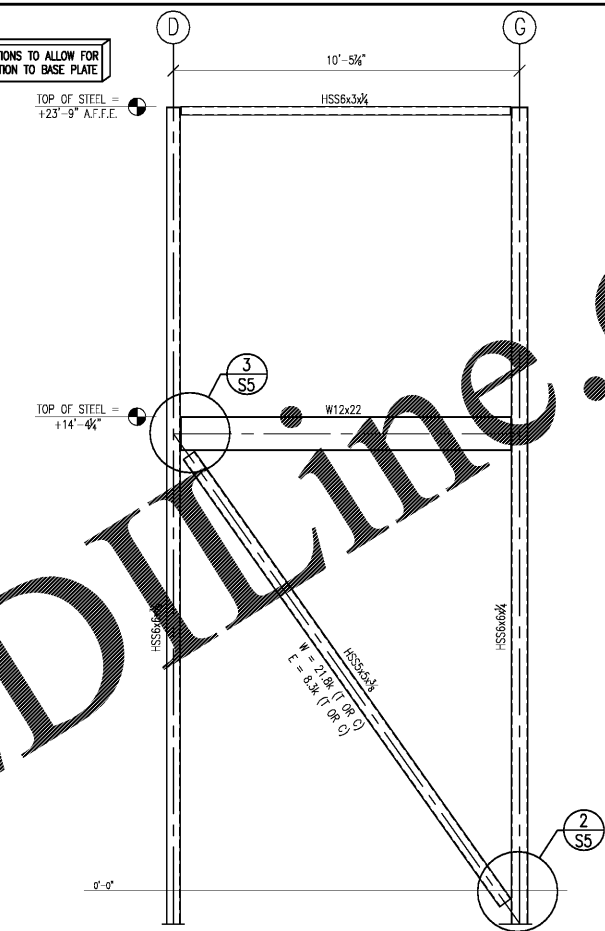
NOTE: MAINTAIN ISOLATIONS TO ALLOW FOR BRACE CONNECTION TO BASE PLATE



NOTE: MAINTAIN ISOLATIONS TO ALLOW FOR BRACE CONNECTION TO BASE PLATE

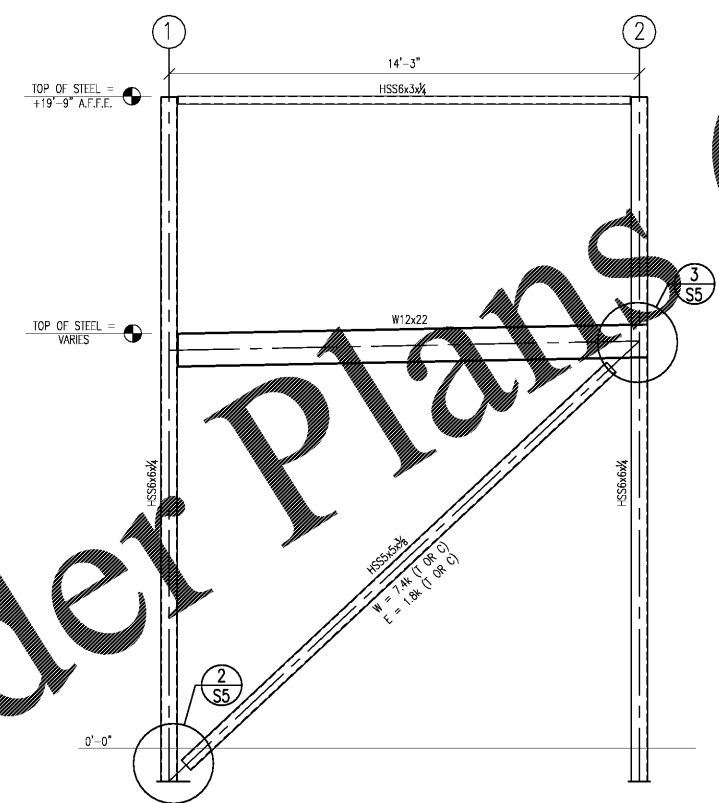


NOTE: MAINTAIN ISOLATIONS TO ALLOW FOR BRACE CONNECTION TO BASE PLATE

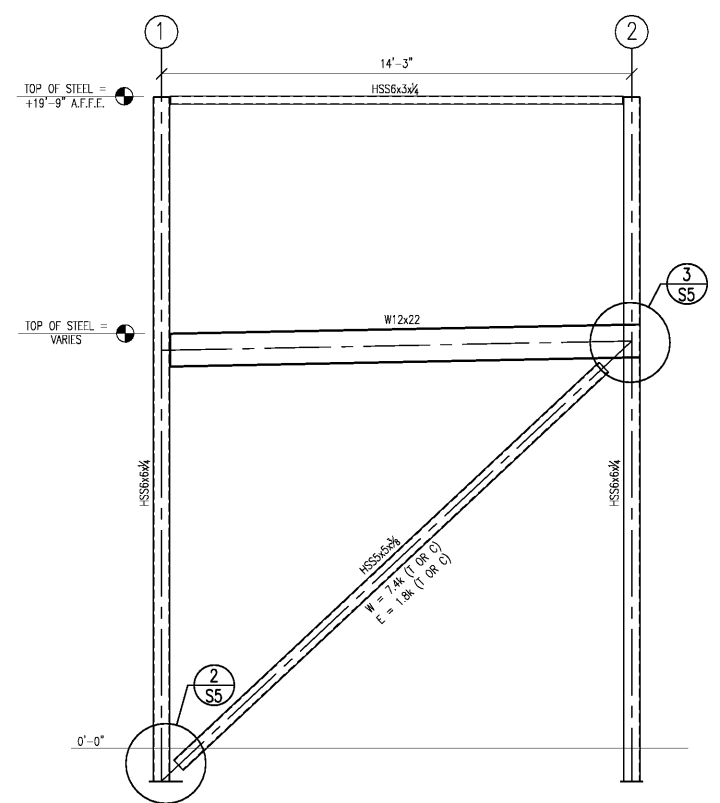


SECTION NO. 1 S4	BF1 - BRACED FRAME DETAIL @ GRIDLINE 1	SCALE 3/8" = 1'-0"	SECTION NO. 2 S4	BF2 - BRACED FRAME DETAIL @ GRIDLINE 3	SCALE 3/8" = 1'-0"	SECTION NO. 2 S4	BF2 - BRACED FRAME DETAIL @ GRIDLINE 6	SCALE 3/8" = 1'-0"
---------------------	--	-----------------------	---------------------	--	-----------------------	---------------------	--	-----------------------

NOTE: MAINTAIN ISOLATIONS TO ALLOW FOR BRACE CONNECTION TO BASE PLATE



NOTE: MAINTAIN ISOLATIONS TO ALLOW FOR BRACE CONNECTION TO BASE PLATE



SECTION NO. 3 S4	BF3 - BRACED FRAME DETAIL @ GRIDLINE B	SCALE 3/8" = 1'-0"	SECTION NO. 4 S4	BF4 - BRACED FRAME DETAIL @ GRIDLINE F	SCALE 3/8" = 1'-0"
---------------------	--	-----------------------	---------------------	--	-----------------------

Order Plans @

WWW.LDILLINE.COM

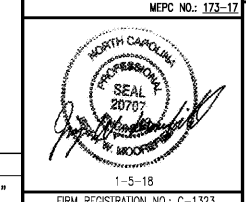
COOK OUT
601 West 3rd St. Pembroke, NC

PK	DATE	DESCRIPTION	REVISIONS

MEPC

MOOREFIELD
ENGINEERING, P.C.
Consulting Engineer

Physical/Mailing Address:
University Commercial Center
7950 North Point Blvd., Suite 209
Winston-Salem, NC 27106
Phone: 336-593-9623
Fax: 336-593-3912
Web: mepc-consultants.com
email: office@mepc-consultants.com



DATE 01-03-2018
DRAWN BY JKP
CHECK BY JUM
JOB NO. 11-03-000
SHEET

S4 of S7

LDILLINE ARCHITECTURE
100 S. Elm Street, Suite 300
Greensboro, NC 27401
Phone: 336.617.4432
www.ldillinearchitecture.com