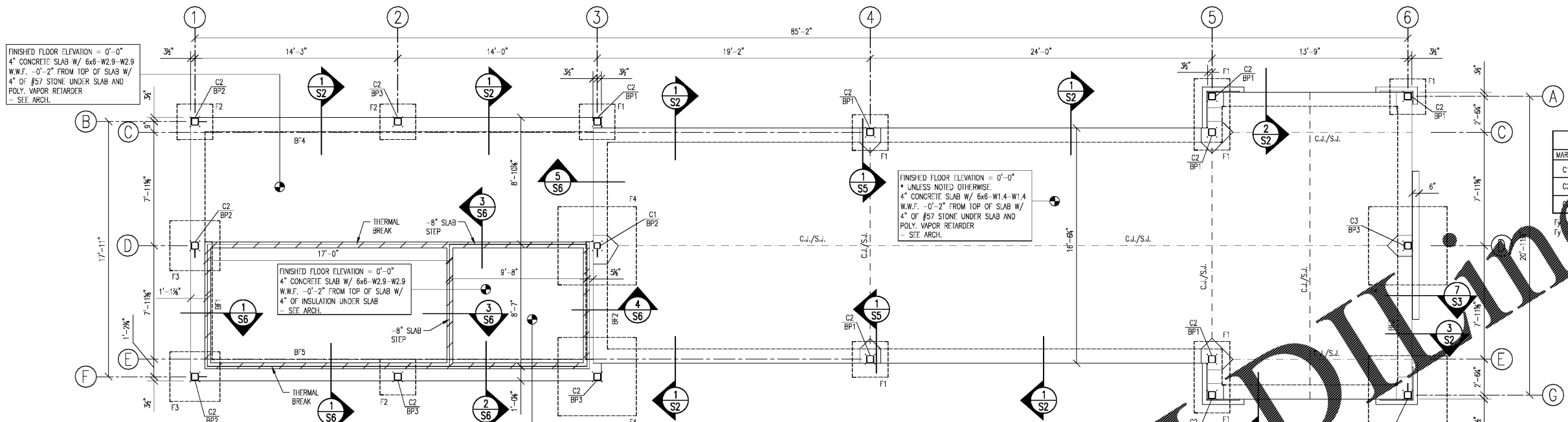


NOTE: DIMENSIONS SHOWN ARE OUT TO OUT OF CMU/CONC.



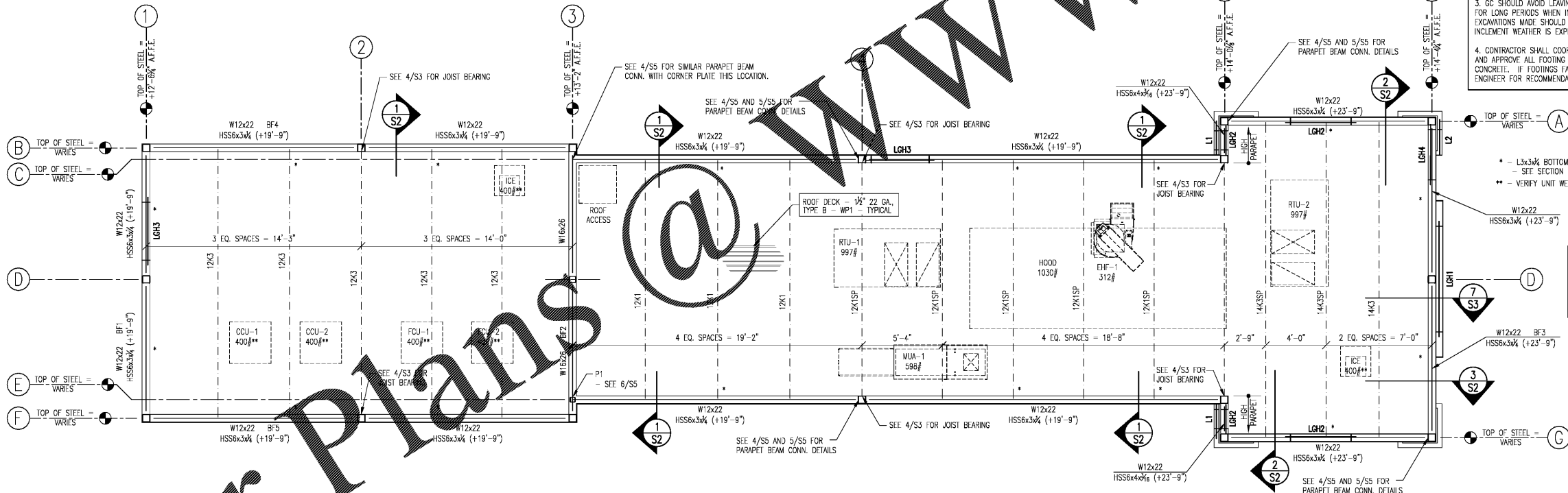
MARK	DESCRIPTION	REF.	BOTTOM C.
C1	HSS6x3x4		-1'-3 3/4"
C2	HSS6x6x4		-1'-2 1/2"
C3	HSS6x6x4		-1'-4"

MARK	SIZE	REINFORCEMENT
F1	2'-6"x2'-6"x1'-0"	3-#5 BARS E.W.
F2	2'-6"x2'-6"x1'-4"	3-#5 BARS E.W. TOP & BOT.
F3	3'-6"x3'-6"x1'-4"	4-#5 BARS E.W. TOP & BOT.
F4	5'-6"x5'-6"x2'-0"	6-#5 BARS E.W. TOP & BOT.

FOUNDATION PLAN
SCALE: 1/4" = 1'-0"

GENERAL NOTES - FOUNDATION PLAN:

- ALL T.O.F. ELEVATIONS ARE -1'-4" B.F.F.E. U.N.O.. MAINTAIN A 10" MINIMUM OF COVER OVER PERIMETER WALL T.O.F.'s TYPICAL. GC SHALL COORDINATE WITH THE PLUMBING/ELECTRICAL CONTRACTOR FOR STEP DOWNS IN THE T.O.F.'s AS INDICATED TO ALLOW PLUMBING/ELECTRICAL TO EXIT THE BUILDING.
- FOUNDATION DESIGN BASED ON A PRESUMPTIVE SOIL BEARING CAPACITY OF 2000PSF. ANY AREAS DETERMINED NOT TO PROVIDE THIS STATED SOIL BEARING CAPACITY SHALL BE BROUGHT TO THE ENGINEER'S ATTENTION.
- GC SHOULD AVOID LEAVING OPEN TRENCH EXCAVATIONS FOR THE FOOTINGS FOR LONG PERIODS WHEN INCLEMENT WEATHER IS ANTICIPATED. IN GENERAL ALL EXCAVATIONS MADE SHOULD BE "POURED ON THE DAY OF THE EXCAVATION IF INCLEMENT WEATHER IS EXPECTED."
- CONTRACTOR SHALL COORDINATE FOR LOCAL INSPECTING AUTHORITY TO REVIEW AND APPROVE ALL FOOTING TRENCHES PRIOR TO THE PLACEMENT OF ANY FOOTING CONCRETE. IF FOOTINGS FAIL INSPECTION CONTRACTOR SHALL CONTACT THE ENGINEER FOR RECOMMENDATIONS.



ROOF FRAMING PLAN
SCALE: 1/8" = 1'-0"

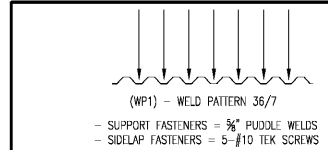
GENERAL NOTES - ROOF FRAMING PLAN:

- T.O.S. VARIES - SEE PLAN AND DETAILS.
- PROVIDE MEMBER SIZE AND SPACING AS NOTED.
- PROVIDE 1.5" TYPE B 22GA ROOF DECK WHERE INDICATED.
- PROVIDE BAR JOIST SIZE AND SPACING AS NOTED ON PLAN. BRIDGING PER S.J.L.
- STEEL FABRICATOR SHALL PROVIDE MISC. FILLERS AND BRACING FOR THE SUPPORT OF THE METAL DECK EDGES AND STIRRUPEL MEMBERS AND SKEWED DECK EDGES.
- UP LIFT = 23 PSF PERIOR CEILING, 35 PSF EDGE ZONE, 51 PSF CORNER ZONE.
- CONTRACTOR SHALL SUBMIT SHOP DRAWINGS FOR REVIEW BY ARCHITECT/ENGINEER.
- FOR JOIST SEATS TO BE 2" DEEP U.N.O. - SEE SECTIONS.
- DESIGNATE ALL SP DESIGNATIONS FOR EQUIPMENT WEIGHTS AS INDICATED.
- VERIFY WEIGHTS WITH MECHANICAL.

MARK	DESCRIPTION	JAMB CONDITION	SILL CONDITION	COMMENTS
LGH1	2-600S162-43(33ksi) METAL STUDS 2-600I150-43(33ksi) METAL TRACKS	1-600S162-43(33ksi) METAL STUDS 1-600I150-43(33ksi) METAL TRACKS	1-600S162-43(33ksi) METAL STUDS 1-600I150-43(33ksi) METAL TRACKS	SEE DETAIL 8/S3
LGH2	1-600S162-43(33ksi) METAL STUDS 1-600I150-43(33ksi) METAL TRACKS	2-600S162-43(33ksi) METAL STUDS 2-600I150-43(33ksi) METAL TRACKS	1-600S162-43(33ksi) METAL STUDS 1-600I150-43(33ksi) METAL TRACKS	SEE DETAIL 8/S3
LGH3	2-600S162-43(33ksi) METAL STUDS 2-600I150-43(33ksi) METAL TRACKS	2-600S162-43(33ksi) METAL STUDS 2-600I150-43(33ksi) METAL TRACKS	N/A	SEE DETAIL 9/S3
LGH4	2-600S162-68(50ksi) METAL STUDS 2-600I300-68(50ksi) METAL TRACKS	2-600S162-43(33ksi) METAL STUDS 2-600I150-43(33ksi) METAL TRACKS	N/A	SEE DETAIL 9/S3

MARK	SIZE	SUPPORT CONDITION
L1	4"x4"x3/8" ANGLE (LLV)	8" BRICK
L2	4"x4"x3/8" ANGLE (LLV)	SECURE TO LGH4 W/ 4-#12 TEK SCREWS 4" IN FROM ENDS & @ MIDPOINT

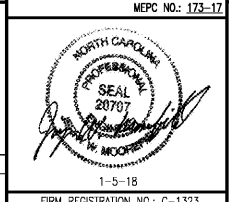
NOTE: FULL PARAPET CONDITION REQUIRES DRAINAGE/OVERFLOW SCUPPERS - SEE ARCH./MECH. DWGS.



SECTION NO.	WP1 - ROOF DECK FASTENER LAYOUT	SCALE	NO SCALE
-------------	---------------------------------	-------	----------

MEPC
MOOREFIELD ENGINEERING, P.C.
Consulting Engineer

Physical/Mailing Address:
University Commercial Center
7950 North Point Blvd., Suite 209
Winston-Salem, NC 27106
Phone: 336-593-9623
Fax: 336-593-3912
Web: mepc-consultants.com
email: office@mepc-consultants.com



DATE: 01-05-2018
DRAWN BY: JKP
CHECK BY: JUM
JOB NO.: 11-03-000
SHEET

S1 of S7

COOK OUT
601 West 3rd St. Pembroke, NC

FOUNDATION PLAN AND ROOF FRAMING PLAN

FIRM REGISTRATION NO.: C-1323