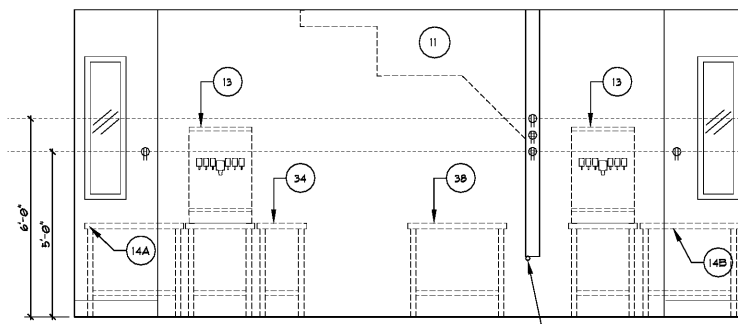
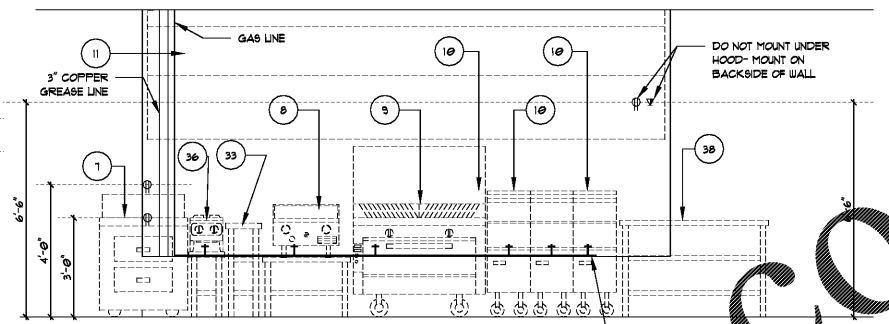


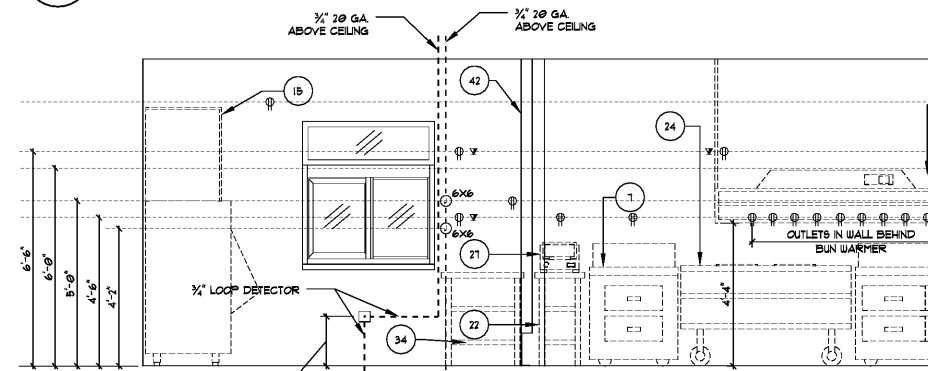
1 KITCHEN EQUIPMENT ELEVATION  
A0.2 SCALE: 3/8"=1'-0"



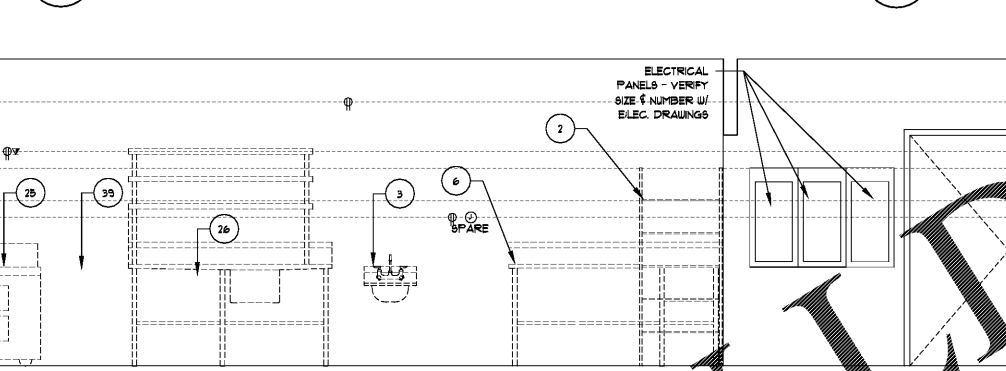
2 KITCHEN EQUIPMENT ELEVATION  
A0.2 SCALE: 3/8"=1'-0"



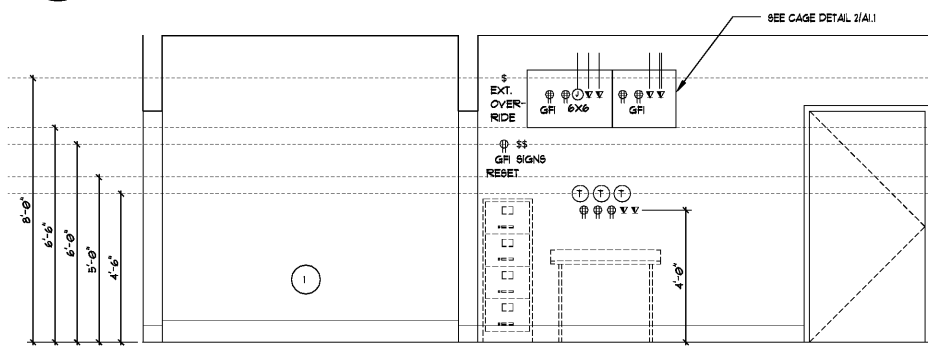
4 KITCHEN EQUIPMENT ELEVATION  
A0.2 SCALE: 3/8"=1'-0"



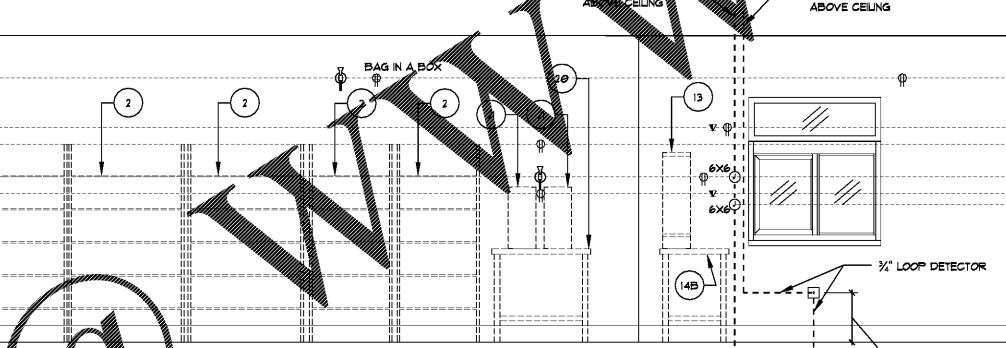
3 KITCHEN EQUIPMENT ELEVATION  
A0.2 SCALE: 3/8"=1'-0"



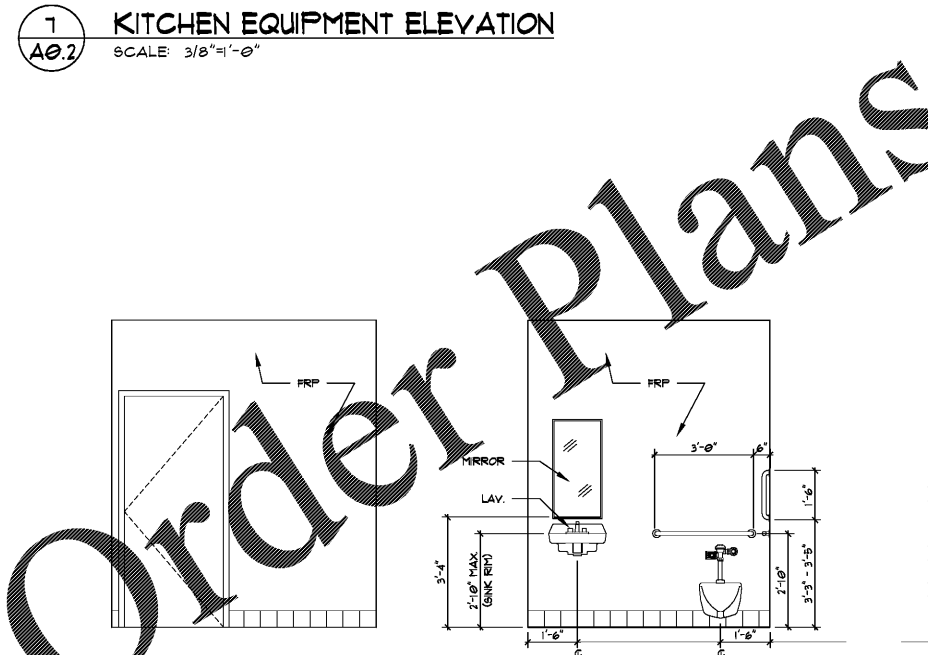
5 KITCHEN EQUIPMENT ELEVATION  
A0.2 SCALE: 3/8"=1'-0"



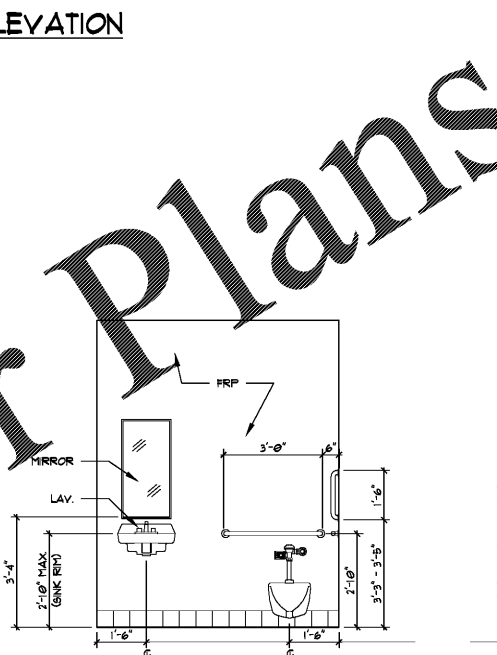
7 KITCHEN EQUIPMENT ELEVATION  
A0.2 SCALE: 3/8"=1'-0"



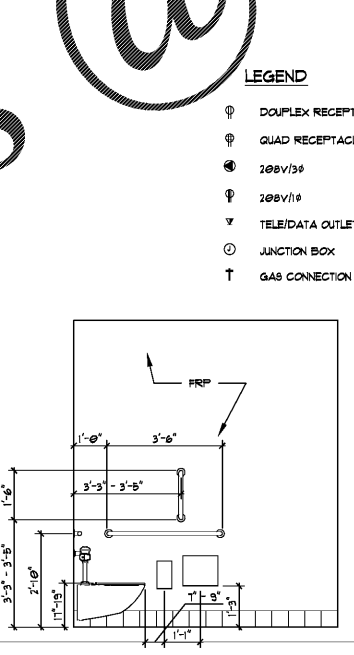
6 KITCHEN EQUIPMENT ELEVATION  
A0.2 SCALE: 3/8"=1'-0"



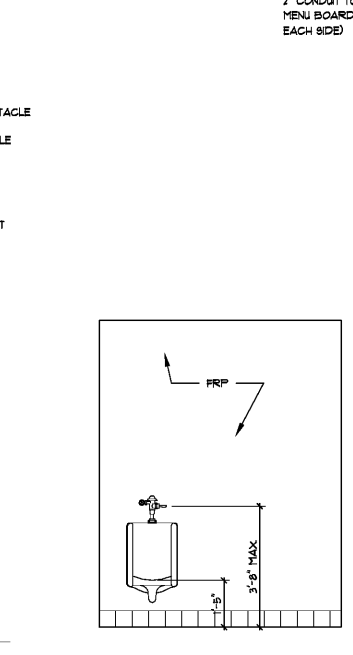
8 UNISEX TOILET ELEVATION  
A0.2 SCALE: 3/8"=1'-0"



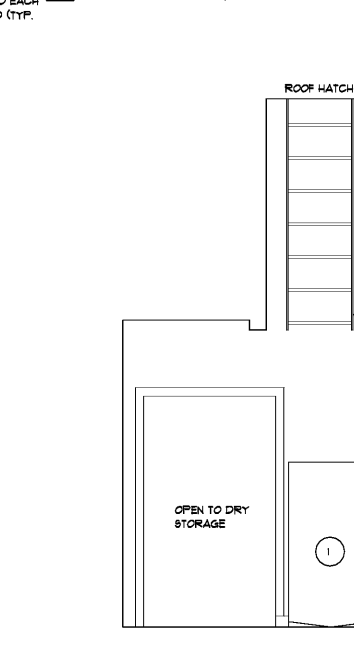
9 UNISEX TOILET ELEVATION  
A0.2 SCALE: 3/8"=1'-0"



10 UNISEX TOILET ELEVATION  
A0.2 SCALE: 3/8"=1'-0"



11 UNISEX TOILET ELEVATION  
A0.2 SCALE: 3/8"=1'-0"



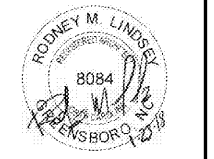
12 ELEVATION  
A0.2 SCALE: 3/8"=1'-0"

- LEGEND**
- ⊕ DUPLEX RECEPTACLE
  - ⊕ QUAD RECEPTACLE
  - ⊕ 200V/3Ø
  - ⊕ 200V/1Ø
  - ⊕ TELE/DATA OUTLET
  - ⊕ JUNCTION BOX
  - ⊕ GAS CONNECTION

OWNER'S EQUIPMENT LEGEND (N.I.C.)			
NO.	DESCRIPTION	MANUFACTURER	MODEL NUMBER
1	CAN WASH AREA		
2	DRY STORAGE SHELVING RACKS		
3	WALL MOUNTED HAND SINK	TITAN STAINLESS	
4	STORAGE SHELVING RACKS (WALK-IN)		
5	WALK-IN FREEZER	TEMPORITE	
6	(A) COMPARTMENT SINK	TITAN STAINLESS	CUSTOM-BUILT
7	(B) DRAINER HANDSUCH SALAD PREP UNIT (ON CASTERS)	DELFIELD	44480107
8	CHAR. GRILL W/ STAND (ON CASTERS)	SOUTH-BEND & TITAN STAINLESS	HQS-48 & CUSTOM-BUILT
9	GRIDDLE W/ STAND (ON CASTERS)	SOUTH-BEND & TITAN STAINLESS	FRN-CC & CUSTOM-BUILT
10	(A) 48" W/ LB. FILTERS (ON CASTERS)		8618
11	HOOD W/ EXHAUST AND ANGLE SYSTEM	CAPTIVE-AIRE	8042D-2-ACHP-4
12	WALK-IN COOLER	KOLPAK	
13	(A) CANNONATED BEVERAGE MACHINE W/ ICE BIN	SUPPLIED BY COKE DISTRIBUTOR	
14	STAINLESS STEEL WORK TABLE (DISWATER TABLE)	TITAN STAINLESS	CUSTOM-BUILT - 144 & 148 ARE RITL HAND LAYOUTS
15	ICE MAKER BIN	MANTOUEL & ROLETT	F-2000PMS & 60100P-30
16	STAINLESS STEEL SPLASH GUARDS		
17	(A) DRAINER HANDSUCH SALAD PREP UNIT (ON CASTERS)	DELFIELD	44480107
18	"REARANGE MACHINE (ON CASTERS)	TAYLOR	
19	4'-0" X 3'-0" STAINLESS STEEL SHAKE WORK TABLE	TITAN STAINLESS	CUSTOM-BUILT
20	1'-0" X 3'-0" STAINLESS STEEL TEA WORK TABLE	TITAN STAINLESS	CUSTOM-BUILT
21	TEA DISPENSERS		
22	1'-0" X 3'-0" STAINLESS STEEL WORK TABLE FOR QUESADILLA GRILL	TITAN STAINLESS	CUSTOM-BUILT
23	BUN WARMER	HENRY PENNY	BU-8
24	STEAM TABLE (ON CASTERS)	APU SHOTT	QJ 14U-13
25	(A) DRAINER HANDSUCH SALAD PREP UNIT (ON CASTERS)	DELFIELD	44480107
26	VEGETABLE PREP. SINK	TITAN STAINLESS	CUSTOM-BUILT
27	PRO-MAX SMOOTH "ISO-SIZED GRILL	STAR	68100
28	(A) DRAINER HANDSUCH COASTER REFRIGERATOR (ON CASTERS)	TYLOR	TC-4804-F
29	2'-0" X 3'-0" STAINLESS STEEL BAKING WORK TABLE	TITAN STAINLESS	CUSTOM-BUILT
30	18" X 14" X 3" STAINLESS STEEL PICK-UP WORK TABLE	TITAN STAINLESS	CUSTOM-BUILT
31	(A) DRINK MIXERS	TAYLOR (RAZLE BLENDER)	BC10
32	2" DIA. HOOP POP SINK		
33	1'-0" X 3'-0" STAINLESS STEEL CHARGRILL WORK TABLE	TITAN STAINLESS	CUSTOM-BUILT
34	2'-0" X 3'-0" STAINLESS STEEL PICKUP WORK TABLE	TITAN STAINLESS	CUSTOM-BUILT
35	2" DIA. BURNER GAS HOT PLATE	VOLURATI	48756
36	3'-0" X 4'-0" STAINLESS STEEL FRY WORK TABLE	TITAN STAINLESS	CUSTOM-BUILT
37	1'-0" X 3'-0" STAINLESS STEEL WORK TABLE	TITAN STAINLESS	CUSTOM-BUILT
38	1'-0" X 3'-0" STAINLESS STEEL WORK TABLE	TITAN STAINLESS	CUSTOM-BUILT
39	1'-0" X 3'-0" STAINLESS STEEL WORK TABLE	TITAN STAINLESS	CUSTOM-BUILT
40	1'-0" X 3'-0" STAINLESS STEEL WORK TABLE	TITAN STAINLESS	CUSTOM-BUILT
41	STAINLESS STEEL REGISTER TABLE	TITAN STAINLESS	CUSTOM-BUILT
42	4' SQUARE STAINLESS STEEL URN. SEE 31A.1		

NOTES:  
1. ALL FOOD SERVICE EQUIPMENT MUST MEET ANSI SANITATION STANDARDS.  
2. VERIFY EQUIPMENT WITH OWNER'S REFRIGERATION EQUIPMENT DRAWINGS.

**LINDSEY ARCHITECTURE**  
25 S. Elm Street, Suite 300  
Greensboro, NC 27401  
P: 336.817.4434  
www.lindsayarchitecture.com



**COOK OUT PEMBROKE**  
601 West 3rd Street  
Pembroke, NC

CHK	DATE	DESCRIPTION

**COORDINATION ELEVATIONS**

DATE: 1-23-2018  
DRAWN BY: ---  
CHECK BY: ---  
JOB NO: 17-103  
SHEET

**A0.2**