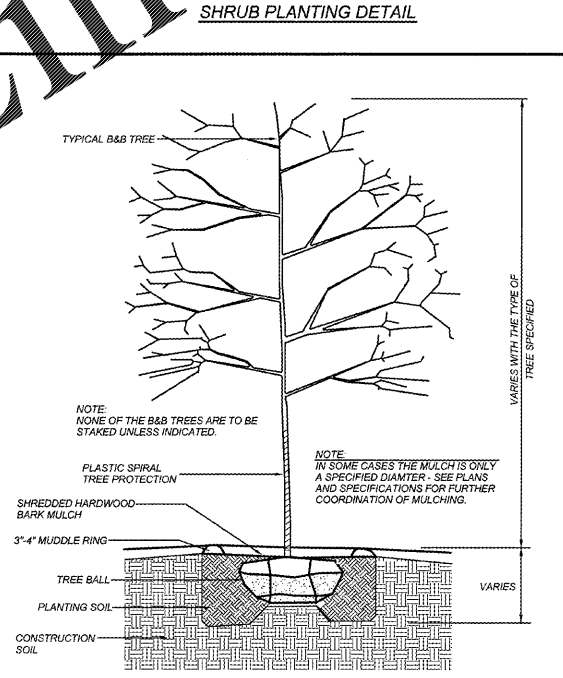
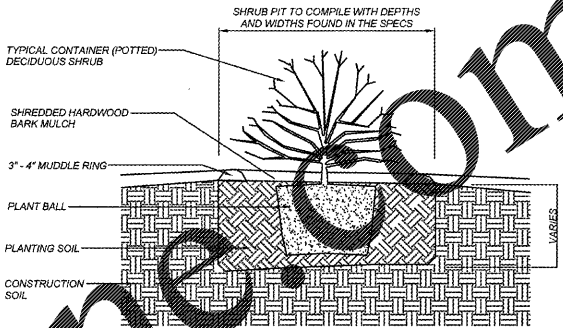


24 HOUR CONTACT
DAVID SHOTWELL
 CONSTRUCTION MANAGER
 TELEPHONE: (336) 807-0101

LANDSCAPE ISLAND NOTE:
 CONTRACTOR TO ENSURE THAT THE GROUND SURFACE AROUND TREE AND SHRUB LOCATIONS SLOPES DOWNWARD AWAY FROM TREE/SHRUB INSTALLATION LOCATIONS TO ALLOW FOR POSITIVE DRAINAGE. CONTRACTOR SHOULD ALSO ENSURE THAT THE GROUND SURFACE AT THE BACK OF CURB BE GRADED TO BE EVEN WITH THE CURB ELEVATION SUCH THAT PONDING OF WATER DOES NOT OCCUR BEHIND THE CURB.

NOTE: IN SOME CASES THE MULCH IS ONLY A SPECIFIED DIAMETER. SEE PLANS AND SPECIFICATIONS FOR FURTHER COORDINATION OF MULCHING.
 NOTE: PRUNE SHRUB AS RECOMMENDED BY GROWER ONLY AFTER THE PLANT HAS BEEN WATERED INTO THE PLANTING SOIL.



NOTE: NONE OF THE B&B TREES ARE TO BE STAKED UNLESS INDICATED.
 NOTE: IN SOME CASES THE MULCH IS ONLY A SPECIFIED DIAMETER - SEE PLANS AND SPECIFICATIONS FOR FURTHER COORDINATION OF MULCHING.

PLANTING SCHEDULE (SEE LANDSCAPING NOTE #12)

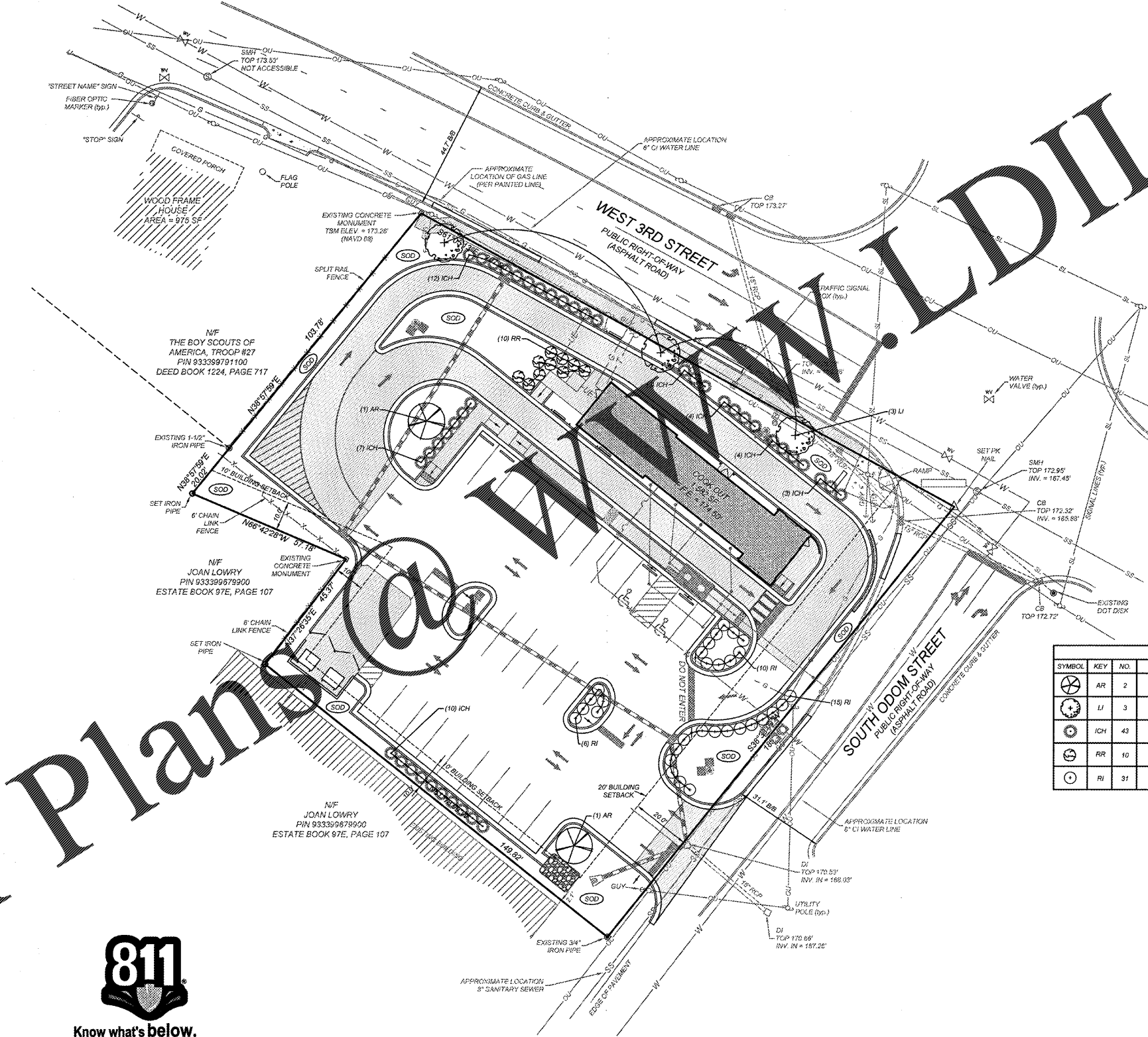
SYMBOL	KEY	NO.	BOTANICAL NAME	COMMON NAME	CALIPER	HEIGHT	ROOT	COMMENTS
AR	2	ACER RUBRUM	RED MAPLE	2"	8'-10'	B & B		
LI	3	LAGERSTROEMIA INDICA	CRAPE MYRTLE	1"-2"	6'-8'	B & B		
ICH	43	ILEX CRENATA 'HELLERI'	HELLERI HOLLY	-	18"-24"	3 GAL.		
RR	10	ROSA RADRAZZ	ROSA'S KNOCKOUT	-	18"-24"	3 GAL.		
RI	31	RHAPHIOLEPSIS INDICA	INDIAN HAWTHORNE	-	18"-24"	3 GAL.		

TURF NOTES:

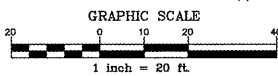
- CHISEL COMPACTED AREAS AND SPREAD TOPSOIL 3 INCHES DEEP OVER ADVERSE SOIL CONDITIONS, IF AVAILABLE.
 - RIP ENTIRE AREA TO 6 INCHES IN DEPTH.
 - REMOVE ALL LOOSE ROCK, ROOTS, AND OTHER OBSTRUCTIONS LEAVING SURFACE REASONABLY SMOOTH AND UNIFORM.
 - APPLY AGRICULTURAL LIME, FERTILIZER, AND SUPERPHOSPHATE UNIFORMLY AND MIX WITH SOIL (SEE BELOW).
 - CONTINUE TILLAGE UNTIL A WELL-PULVERIZED, FIRM, REASONABLY UNIFORM SEEDBED IS PREPARED 4 TO 6 INCHES DEEP.
 - SEED ON A FRESHLY PREPARED SEEDBED AND COVER SEED LIGHTLY WITH SEEDING EQUIPMENT OR CULTIPACK AFTER SEEDING.
 - MULCH IMMEDIATELY AFTER SEEDING AND ANCHOR MULCH.
 - INSPECT ALL SEEDED AREAS AND MAKE NECESSARY REPAIRS OR RESEEDINGS WITHIN THE PLANTING SEASON, IF POSSIBLE. IF STAND SHOULD BE OVER 60% DAMAGED, RE-ESTABLISH FOLLOWING ORIGINAL LIME, FERTILIZER AND SEEDING RATES.
 - CONSULT CONSERVATION INSPECTOR ON MAINTENANCE TREATMENT AND FERTILIZATION AFTER PERMANENT COVER IS ESTABLISHED.
- APPLY: AGRICULTURAL LIMESTONE - 2 TONS/ACRE (3 TONS/ACRE IN CLAY SOILS)
 FERTILIZER - 1,000 LBS/ACRE - 10-10-10
 SUPERPHOSPHATE - 500 LBS/ACRE 20% ANALYSIS
 MULCH - 2 TONS/ACRE - SMALL GRAIN STRAW
 ANCHOR - ASPHALT EMULSION @ 300 GAL/ACRE
- SOD PREPARATION:
 FOLLOW PREPARATION AS DIRECTED FOR STEPS 1-5 ABOVE. IMMEDIATELY WATER SOD UPON INSTALLATION AND CONTINUE UNTIL ROOTS ARE ESTABLISHED.
- CONTRACTOR SHALL WATER AND MAINTAIN ALL LAWN AREAS UNTIL AN ACCEPTABLE STAND OF GRASS HAS BEEN ESTABLISHED.
 - ONCE AN ACCEPTABLE STAND OF GRASS HAS BEEN ESTABLISHED, THE CONTRACTOR SHALL REPAIR ALL DAMAGED AREAS AND MONITOR THE LAWN AREAS UNTIL THE GRASS REACHES A HEIGHT OF 4 INCHES TALL.
 - AT THE TIME THE GRASS REACHES A HEIGHT OF 4 INCHES TALL, THE CONTRACTOR SHALL MOW THE GRASS TO THE HEIGHT OF 3 INCHES AND TURN OVER THE LAWN MAINTENANCE TO THE OWNER.
 - AN ACCEPTABLE STAND OF GRASS SHALL BE 92% COVERAGE OR BETTER.

LANDSCAPE NOTES:

- THE GENERAL CONTRACTOR SHALL LEAVE THIS SITE AT FINISHED GRADE. THE LANDSCAPE CONTRACTOR SHALL REVISE GRADES AT A MINIMUM TO ENSURE SMOOTH TRANSITIONS BETWEEN PLANTING BEDS AND LAWN AREAS.
- PLANT GUARANTEE: ALL PLANTS SHALL BE GUARANTEED TO LIVE FOR TWELVE MONTHS. THE GUARANTEE SHALL COMMENCE UPON FINAL ACCEPTANCE OF THE PROJECT. IF ANY PLANTS ARE DEAD OR IN AN UNHEALTHY CONDITION BEFORE FINAL ACCEPTANCE, THE LANDSCAPE CONTRACTOR SHALL REPLACE THEM AT HIS EXPENSE. THIS REPLACEMENT SHALL NOT BE CONSIDERED A GUARANTEED REPLACEMENT.
- ALL PLANTING SHALL BE PLACED WITHIN A MULCHED PLANTING BED. ALL STRAPPING AND THE TOP 23 OF WIRE BASKETS MUST BE CUT AWAY AND REMOVED FROM ROOT BALLS PRIOR TO BACKFILLING PLANTING BEDS. REMOVE TOP 1/3 OF BURLAP FROM ROOT BALL.
- ALL LANDSCAPE WORK SHALL BE IN ACCORDANCE WITH CURRENT CITY STANDARD DETAILS AND SPECIFICATIONS.
- ALL AREAS NOT MULCHED SHALL BE SEEDED OR SODDED IN ACCORDANCE WITH THE AREA SPECIFIED ON PLANS WITH 'REBEL' HYBRID TALL FESCUE OR EQUIVALENT AS PRESCRIBED IN THE SEEDING SCHEDULE AS SHOWN ON THIS SHEET. IN COASTAL AREAS OR AREAS WITH MORE TEMPERATE CLIMATES, BERKUDA SOD SHOULD BE UTILIZED. IF THERE ARE QUESTIONS BY THE LANDSCAPE CONTRACTOR AS TO WHICH SEED/SOD TO USE, THE LANDSCAPE ARCHITECT OR ENGINEER SHOULD BE CONTACTED PRIOR TO INSTALLATION.
- SITE LIGHTING SHALL NOT BE PLACED IN CONFLICT WITH PLANTED TREES.
- TREE PROTECTION FENCING TO BE PROVIDED AROUND TREE PRESERVATION AREAS IN ACCORDANCE WITH CITY STANDARDS.
- COORDINATE ALL WORK WITH SITE LAYOUT AND SITE GRADING, DRAINAGE & UTILITIES PLAN.
- VERIFY LOCATION OF UTILITIES BEFORE PLANTING.
- MULCH ALL AREAS, THAT ARE NOT SEEDED OR SODDED, WITH SHREDDED HARDWOOD MULCH TO A DEPTH OF 3'-4".
- THE SELECTION AND INSTALLATION OF PLANTS AND PLANTING METHODS SHALL CONFORM WITH THE STANDARDS OF THE AMERICAN ASSOCIATION OF NURSERYMEN OR THE CITY STANDARD DETAILS AND SPECIFICATIONS, WHICHEVER IS STRICTER.
- CONTRACTOR IS RESPONSIBLE FOR VERIFYING ALL QUANTITIES. QUANTITIES SHALL RULE OVER PLANT LISTS.
- SUBSTITUTIONS SHALL BE SUBMITTED TO LANDSCAPE ARCHITECT FOR APPROVAL, PRIOR TO INSTALLATION. SUBSTITUTIONS MAY REQUIRE ADDITIONAL APPROVAL BY THE GOVERNING JURISDICTION.
- ALL LANDSCAPING SOIL AND FILL SHALL BE FREE FROM WEEDS, ROCKS AND DEBRIS AT ALL TIMES.
- TRUCKS AND LARGE SHEDS SHALL BE IMMEDIATELY SITED, AS NECESSARY. TRUCKS AND GUYS SHALL BE DESIGNED AND CONSTRUCTED SO AS TO PROTECT TREES AND SHRUBS FROM DAMAGE. TREES AND SHRUBS SHALL BE FASTENED TO TRUCKS WITH AN ACCEPTABLE COMMERCIAL TREE TIE OF PLASTIC OR HOSSA COVERED WIRE.



LANDSCAPE CALCULATIONS:
 VEHICULAR SURFACE AREA = 20,848 SF
 LANDSCAPE AREA REQUIRED: 8% OF VEHICULAR SURFACE AREA = 1,668 SF
 LANDSCAPE AREA PROVIDED: 3,772 SF



REVISIONS

NO.	DATE	DESCRIPTION
1	07-05-17	TOWN COMMENTS
2	07-24-17	TOWN COMMENTS #2
2	10-25-17	COOLER EXTENSION

COMMERCIAL SITE DESIGN

882 CREEKDOOR ROAD
 RALEIGH, NORTH CAROLINA 27688
 (919) 848-4021 FAX: (919) 848-2741
 WWW.CSDESIGN.COM

CLIENT:
 COOK OUT
 15 LAURA LANE, SUITE 300
 THOMASVILLE, NC 27386
 TELEPHONE: (336) 215-7025
 FAX: (336) 474-1849

COOKOUT FRESH HAMBURGERS

601 WEST 3RD STREET
 PEMBROKE, NORTH CAROLINA

LANDSCAPE PLAN

PROJECT NO: OUT-1715
 FILENAME: OUT1715-LS
 DRAWN BY: DDH
 SCALE: 1" = 20'
 DATE: 05-19-17
 SHEET NO: C-8