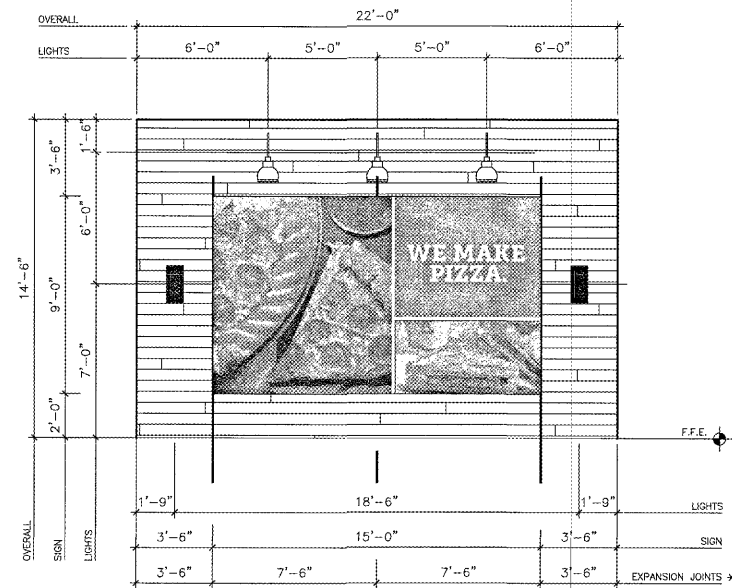


1 FRONT ELEVATION - NEW
SCALE: 3/16" = 1'-0"



2 FRONT EXPANSION JOINT DIMENSIONS
SCALE: 1/4" = 1'-0"



SQUARE FOOTAGE: 42.00 SF.
COLORS:
RED - FMS# 186C
YELLOW - FMS# 1235C
INTERNALLY ILLUMINATED, SINGLE FACE
WALL SIGN WITH BLACK CABINET AND
RETAINER.

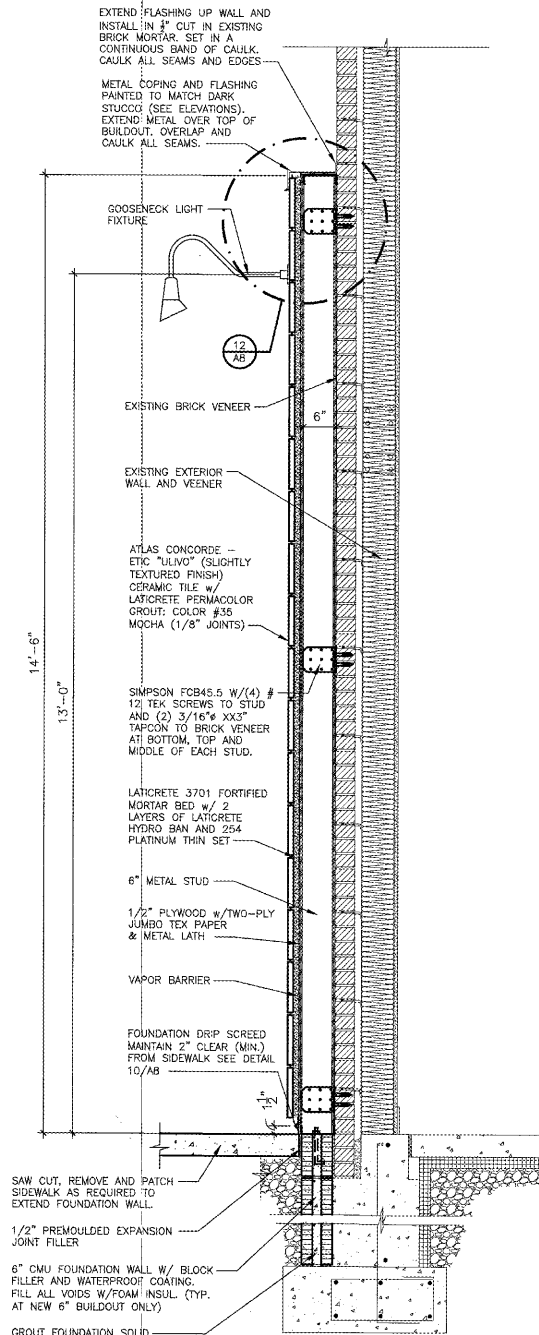
3 EXTERIOR SIGNAGE
SCALE: 1/4" = 1'-0"

PILOT EXTERIOR LEGEND

- 1 CERAMIC TILE, ATLAS CONCORDE, ETC, ULIVO-FINISH: SLIGHTLY TEXTURED, 9"x36" w/ LATICRETE PERMACOLOR GROUT: COLOR #35 MOCHA (TILE TO BE LAID IN A "RANDOM" PATTERN WITH 1/8" GROUT JOINTS)
- 2 GOOSENECK LIGHT FIXTURE
- 3 WALL SOUNDCE

NOTE

CONTRACTOR IS TO INSTALL ALL JOINTS/REVEALS IN STUCCO AND TILE ONLY IN THE LOCATIONS SHOWN AND DIMENSIONED ON THE PLANS. ANY DEVIATION MUST BE PRE-APPROVED IN WRITING BY PILOT'S CORPORATE ARCHITECT. FAILURE TO FOLLOW THIS WILL RESULT IN THE JOINTS BEING REMOVED, REINSTALLED PROPERLY AND THAT AREA REFINISHED AT THE CONTRACTORS EXPENSE



4 WALL SECTION
SCALE: 3/4" = 1'-0"

EXTERIOR ELEVATION RENOVATION,
DETAILS AND WALL SECTION
PILOT TRAVEL CENTER
15845 WHYTE HARDEE BLVD
HARDEEVILLE, SC 29927

DATE	REV	REVISION DESCRIPTION

DATE: 12-07-17 DRAWN BY: B.R.A. PROJECT: 4569-01
© COPYRIGHT, SELF PUBLISHED
PILOT TRAVEL CENTER
THIS DRAWING IS UNPUBLISHED
NO USE OR DISCLOSURE OF THE DRAWING
IS PERMITTED, EXCEPT AS EXPRESSLY
AUTHORIZED BY PILOT TRAVEL CENTER
SHEET
A6.1