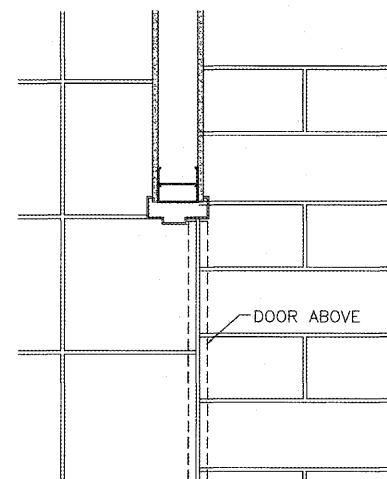


1 FLOOR FINISH PLAN  
A2 3/16" = 1'-0"



2 TYP. DOOR TRANSITION  
A2 N.T.S.

NOTE:  
1. SEE THIS SHEET FOR NOTES, FINISH SCHEDULES, LEGENDS AND DETAILS.  
2. THE HATCH PATTERN SHOWN IDENTIFIES THE CORRECT TILE BY "DEGREE OF SHADING" VERIFY PATTERN WITH CONSTRUCTION MANAGER BEFORE INSTALLATION.

NOTE:  
ALL TILE TRANSITIONS NEED TO OCCUR UNDER THE DOOR. CHECK ORIENTATION ON FLOOR PLAN AND LOCATE EACH TRANSITION ACCORDINGLY.

TRAVEL CENTER FINISH SCHEDULE									
ROOM MARK	ROOM NAME	FLOOR	COVE BASE	WALL		CEILING		NOTES	
				MATERIAL *	FINISH	MATERIAL	FINISH	HEIGHT	
01	CASHIER DESK	RF2	RB	GWB/SW3	PNT1	ACT1	STANDARD	8'-6"	-
02	EMPLOYEE KIOSK	EXISTING	MATCH EXISTING	GWB	PNT1/WP2	ACT1	STANDARD	8'-11"	1,2
03	STORAGE ROOM	EXISTING	MATCH EXISTING	GWB	PNT3	ACT1	STANDARD	8'-11"	1

NOTE: ALL COVEBASE TO BE 6"x12"  
\* REFER TO DETAILS ON A8 FOR BACKING BEHIND TILE BASE FOR EACH WALL TYPE.  
MARLITE - CEMENT BOARD UP TO 2' AFF, PLYWOOD/GYP. BOARD ABOVE DEPENDING ON DETAIL.  
(LOW WALLS GET PLYWOOD, HALLWAYS, ETC. GET GYP. BD.)  
SLAT WALL - PLYWOOD UP TO 9' AFF, INCLUDING BEHIND COVE BASE. GYP. BOARD ABOVE.

**FINISH SCHEDULE NOTES**

- SEE THIS SHEET FOR PAINT FINISH OF DOORS AND FRAMES.
- PROVIDE MARLITE PANELING WAINSCOT TO 53" A.F.F. OVER GYPSUM WALL BOARD w/ MATCHING TRIM PIECES FROM MARLITE.

**FINISH ABBREVIATIONS**

- ACT1 ARMSTRONG "CORTEGA" #789 - WHITE, 24" X 48" X 5/8 LAY-IN FISSURED MINABOARD - "CLASS A"
- GWB 5/8" GYPSUM WALL BOARD
- PNT1 PAINT - SHERWIN WILLIAMS #SW1123 "NAVAJO WHITE", EGGSHELL ENAMEL
- PNT3 PAINT - SHERWIN WILLIAMS #SW1004 "PURE WHITE", EGGSHELL ENAMEL
- RB RUBBER BASE - ARMSTRONG "BLACK"
- RF2 RUBBER FLOORING - ECORE ECDrx 15.2mm X 4' ROLL - COLOR 806 "BED ROCK" - SEE SHEET A2 PROVIDED AND INSTALLED BY FLOORING SUBCONTRACTOR PER MANUFACTURER'S RECOMMENDATIONS. BASE IS TO BE RUBBER BASE PER FINISH SCHEDULE. FOR PRODUCE PROCUREMENT, CONTACT CLAY MOORE AT 330-612-4538 OR CLAY.MOORE@ECOREINTL.COM.
- SW3 SLATWALL - PREFINISHED "BLACK"
- WP2 WALL PANELING - MARLITE #PLK 319 "WHITTIER ANORE" WITH #WG475 TOP TRIM (DRIVER'S LOUNGE TO INCLUDE #WG477 CHAIR RAIL)

**TRAVEL CENTER FLOOR TILE LEGEND**

RF2 - RUBBER FLOORING - ECORE ECDrx 15.2mm X 4' ROLL - COLOR 806 "BED ROCK". FURNISHED AND INSTALLED BY FLOORING SUBCONTRACTOR PER MANUFACTURER'S RECOMMENDATIONS. BASE IS TO BE RUBBER BASE PER FINISH SCHEDULE. FOR PRODUCE PROCUREMENT, CONTACT CLAY MOORE AT 330-612-4538 OR CLAY.MOORE@ECOREINTL.COM.

NOTE: ALL CONTRACTORS ARE TO CONTACT LOUISVILLE TILE TO REDEVE PILOT'S PREFERRED TILE/MATERIAL PRICING AND DEDICATED INVENTORY. QUOTE CENTRAL: 502-452-2317 OR KNOXVILLE BRANCH 865-875-8453

FLOOR FINISH PLAN, NOTES, LEGENDS AND SCHEDULES  
PILOT TRAVEL CENTER  
15845 WHYTE HARDEE BLVD  
HARDEEVILLE, SC 29927

DATE	REV	DESCRIPTION	INT.
DATE: 12-07-17		PROJECT: 4569-01	
		REVISION DESCRIPTION	

DATE: 12-07-17  
DRAWN BY: B.R.A.  
PROJECT: 4569-01  
REVISION DESCRIPTION  
DATE: REV: INT.  
SHEET: A2