

1
A1 NEW FRAMING PLAN
3/16" = 1'-0"

PARTITION NOTES

- ALL METAL FRAMING USED FOR INTERIOR PARTITIONS IS TO BE A MINIMUM OF 25 GAUGE, EXCEPT ANY INTERIOR FRAMING TO RECEIVE "DENS-SHIELD" BOARD OR CEMENT BOARD IS TO BE A MINIMUM OF 20 GAUGE. SEE STEEL STUD NOTES IN STRUCTURAL DRAWINGS FOR GAUGES OF EXTERIOR WALL SYSTEM. ALL FRAMING IS TO BE SPACED AT 16" O.C. TYPICAL UNLESS OTHERWISE NOTED.
- PARTITIONS TERMINATED ABOVE CEILING SHALL HAVE FRAMING EXTENDED AS NECESSARY TO STRUCTURE ABOVE TO ENSURE ADEQUATE BRACING AND STABILITY. SEE DETAIL 5/A3.2.
- ALL EXTERIOR WALLS ARE TO BE INSULATED FROM SLAB TO DECK w/ 6" BATT INSULATION.
- ALL INTERIOR METAL STUDS ARE TO BE 3 5/8" UNLESS OTHERWISE NOTED ON SHEET "A1".
- ALL INTERIOR WALL BOARD (GYPSUM) TO BE 5/8" THICK. REFER TO SHOWER DETAILS AND RESTROOM DETAILS FOR CEMENT BOARD REQUIREMENTS.

SYMBOL LEGEND	
ROOM NAME 32	ROOM NUMBER
11 A	DOOR NUMBER
1 A7	SECTION MARK SHEET WHERE SHOWN
B A11	ELEVATION MARK SHEET WHERE SHOWN
01 A8	DETAIL MARK SHEET WHERE SHOWN
187	EQUIPMENT MARK

PLAN LEGEND	
---	EXISTING
---	INTERIOR PARTITION NON-INSULATED

DOOR/OPENING SCHEDULE NOTES

- PAINT DOOR FRAME SHERWIN WILLIAMS #5W6083 "SABLE".
- DOORS TO HAVE CLOSERS - HAGER 5200 MLT 14 ALUM.
- PROVIDE 15" x 12" VISION-PROOF LOUVER AS INDICATED. SEE PL2 DOOR TYPE THIS SHEET.
- DOOR TYPE "S1" TO BE MANUFACTURED BY CHASE DOORS MODEL SD2000 LAMINATE FINISH COLOR WILSONART "MONTICELLO MAPLE" #7925-60 AND 12" HIGH 5/5 KICKPLATE. HARDWARE TO BE FURNISHED w/ DOOR.

DOOR HARDWARE GROUPS

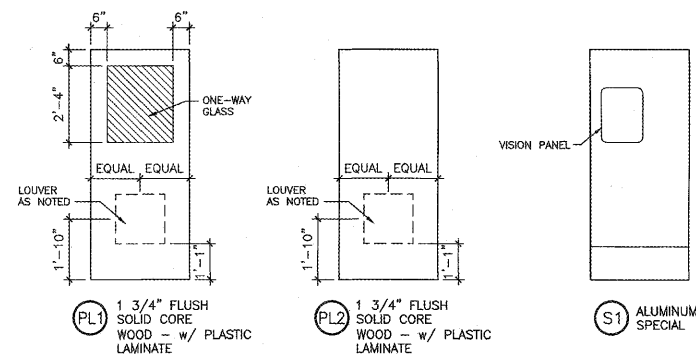
- GROUP #10 - STOCKROOM
 (1) PAIR BUTTS - HAGER EC8B1100 4.5 X 4.5 US260
 (1) CLOSER - HAGER 5200 MLT 14 ALUM
 (1) STOREROOM LOCKSET - SCHLAGE NDBOPD RHODES US260
 (1) STOP - HAGER 242F X US260
 (1) KICKPLATES - HAGER 1905 10 X 34 US320

GENERAL DOOR AND FRAME NOTES

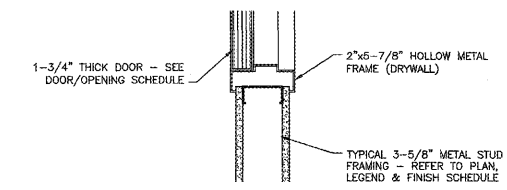
- ALL INTERIOR H.M. FRAMES TO BE KNOCK-DOWN TYPE AND EXTERIOR H.M. FRAMES TO BE WELDED.
- EXTERIOR DOORS TO HAVE INSULATED CORES.
- THE OWNER IS TO PROVIDE INTERIOR GRAPHIC DOOR PLAQUES FOR CONTRACTOR'S INSTALLATION w/ TAMPER-PROOF SCREWS. COORDINATE LOCATIONS w/ OWNER'S REPRESENTATIVE.

PILOT DOOR / OPENING SCHEDULE									
MARK	ROOM NAMES	DOOR SIZE	OPENING SIZE	DOOR TYPE	FRAME TYPE	THRESHOLD TYPE	HARDWARE GROUP	REMARKS	KEY #
D2A	EMPLOYEE KIOSK	3'-8" x 7'-0"	4'-0" x 7'-2"	PL1	F6	-	10	1,2,3	1
D3A	STORAGE ROOM	3'-0" x 7'-0"	3'-4" x 7'-2"	PL2	F6	-	10	1,2,3	1
D4A	PREP AREA	3'-0" x 7'-0"	3'-4" x 7'-2"	S1	F6	-	-	4	-

* ALL LAMINATED DOORS ARE TO BE "MONTICELLO MAPLE" LAMINATE ON BOTH SIDES UNLESS OTHERWISE NOTED IN DOOR/OPENING SCHEDULE.



2
A1 SCALE: 3/8" = 1'-0"



F6 JAMB / HEAD (SIM)
SCALE: 1-1/2" = 1'-0"

NEW FRAMING PLAN, DOOR NOTES, LEGENDS AND SCHEDULES
PILOT TRAVEL CENTER
 15845 WHYTE HARDEE BLVD
 HARDEEVILLE, SC 29927

DATE	REV	DESCRIPTION	INT.
DATE 12-07-17	DRAWN BY: B.R.A.	PROJECT: 4569-01	
		REVISION DESCRIPTION	

© COPYRIGHT 2017 (UNPUBLISHED) PL2 PL1807 J
 THE DRAWING IS CONFIDENTIAL AND NOT TO BE REPRODUCED OR COPIED IN ANY MANNER WITHOUT THE WRITTEN PERMISSION OF THE DRAWING ENGINEER.
 SHEET
A1