

GENERAL NOTES

- ALL BRANCH CIRCUITS UP TO 100'-0" SHALL UTILIZE #12 CONDUCTORS MINIMUM. ALL BRANCH CIRCUITS FROM 101'-0" TO 150'-0" IN LENGTH SHALL UTILIZE #10 CONDUCTORS MINIMUM. ALL BRANCH CIRCUITS 151'-0" UP TO 250'-0" IN LENGTH SHALL UTILIZE #8 CONDUCTORS MINIMUM. CIRCUITS ABOVE 251'-0" SHALL UTILIZE #6 CONDUCTORS MINIMUM.

KEYED NOTES

- INSTALL 24"x24"x4"D J-BOX 12" A.F.F. TO BOTTOM OF J-BOX WITH ACCESSIBLE COVER (1) 2" CONDUIT FED FROM MAX. 8 STALLS (ie: 22 STALLS = (3) 2" CONDUITS) FOR DATA CABLE. SEE SHEET E-1.01 FOR POWER PLAN TO CANOPIES. SEE DETAIL 2/E2.04. (1) 2" CONDUIT FED FROM SPEAKER PEDESTAL AT DRIVE THRU. SEE SHEET "E1.01". FOR POWER PLAN TO DRIVE THRU MENU BOARD. (1) 2" CONDUIT FED FROM PATIO MENUS. REFERENCE "E1.01" SITE PLAN.
- PROVIDE POWER TO COMPUTER / POS / MONITOR - ISOLATED GROUND TYPE ORANGE RECEPTACLE. CIRCUIT SHALL HAVE ISOLATED GROUND WIRE. VERIFY EXACT LOCATION.
- PROVIDE POS DUPLEX BOX WITH 3/4" CONDUIT STUBBED ABOVE DROP CEILING.
- PROVIDE POWER TO MONITORS - ISOLATED GROUND TYPE ORANGE DUPLEX OR QUAD (AS NOTED) RECEPTACLES MOUNTED IN FACE OF CEILING PANELS. CIRCUIT SHALL HAVE ISOLATED GROUND WIRE. PROVIDE 4' TO 6' SLACK OF MC CABLE ABOVE CEILING. VERIFY EXACT PLACEMENT OF MONITORS.
- POS - ISOLATED GROUND TYPE ORANGE QUAD (AS NOTED) RECEPTACLES. CIRCUIT SHALL HAVE ISOLATED GROUND WIRE. PROVIDE 4' TO 6' SLACK OF MC CABLE ABOVE CEILING. VERIFY EXACT PLACEMENT OF MONITORS.
- PROVIDE POWER FOR PAY STATION. VERIFY EXACT LOCATION AND REQUIREMENTS PRIOR TO ROUGH-IN.
- PROVIDE POWER TO CPU RACK UNIT - ISOLATED GROUND TYPE ORANGE QUAD RECEPTACLES. CIRCUIT SHALL HAVE ISOLATED GROUND WIRE.
- DEDICATED PHONE LINE FOR COMPUTER MODEM (36" AFF). RED COVER PLATE "COMPUTERS ONLY", ALSO PROVIDE STANDARD PHONE OUTLET (50" AFF).
- PROVIDE J-BOX SIZED TO ACCEPT 2" CONDUIT. STUB 2" CONDUIT 8" ABOVE CEILING.
- PROVIDE 3/4" CONDUIT FROM J-BOX TO 8" ABOVE CEILING FOR SAFE.
- PROVIDE POWER TO PRINTER - ISOLATED GROUND TYPE ORANGE DUPLEX RECEPTACLE. CIRCUIT SHALL HAVE ISOLATED GROUND WIRE. PROVIDE 4' TO 6' SLACK IN MC CABLE. VERIFY EXACT LOCATION PRIOR TO INSTALLATION.
- PROVIDE POWER FOR ROUTERS - ISOLATED GROUND TYPE ORANGE RECEPTACLES. CIRCUIT SHALL HAVE ISOLATED GROUND WIRE - PLACE OUTLET AT 9'0" A.F.F. VERIFY EXACT LOCATION.
- PROVIDE POWER FOR HME ELECTRONICS - DUPLEX ISOLATED GROUND TYPE ORANGE RECEPTACLE. CIRCUIT SHALL HAVE ISOLATED GROUND WIRE - PLACE OUTLET 12" BELOW CEILING. VERIFY EXACT LOCATION.
- INSTALL JUNCTION BOX BELOW PANEL A WITH 2" CONDUIT RUNS TO EACH SECTION OF CANOPY AND PATIO AND DRIVE THRU MENU. SEE SHEET E1.01.
- PROVIDE J-BOX AND POWER FOR PAYS. VERIFY EXACT LOCATION AND REQUIREMENTS PRIOR TO ROUGH-IN.
- PROVIDE POWER FOR VIDEO/SECURITY - ISOLATED GROUND TYPE ORANGE QUAD RECEPTACLE MOUNTED IN DROP CEILING FOR CAMERA POWER SUPPLY AND HUGHES SATELLITE.
- POS EXTERIOR JUNCTION BOX RECESSED IN WALL, STUBBED UP ABOVE DROP CEILING APPROXIMATELY 103" A.F.F. FOR PAYS ANTENNA.
- POS 2 IN CONDUIT TO CENTER OF TABLE 2'-0" A.F.F. 4" BOX STUB ABOVE DROP CEILING (W/DUPLEX MUD RING).
- E.C. TO INSTALL EQUIPMENT FOR MENU BOARDS PER MFG. RECOMMENDATION.
- PROVIDE QUAD RECEPTACLE AND DATA FOR POS. STUB DATA ABOVE KITCHEN CEILING. VERIFY ALL OTHER REQUIREMENTS WITH POS VENDOR PRIOR TO ROUGH-IN.
- PROVIDE RECESSED CLOCK TYPE RECEPTACLE AND CCTV OUTLET FOR TV SYSTEM. MOUNTED TO WALL. VERIFY EXACT LOCATION PRIOR TO ROUGH-IN. VERIFY EXACT MOUNTING.

POSS R d Cr r

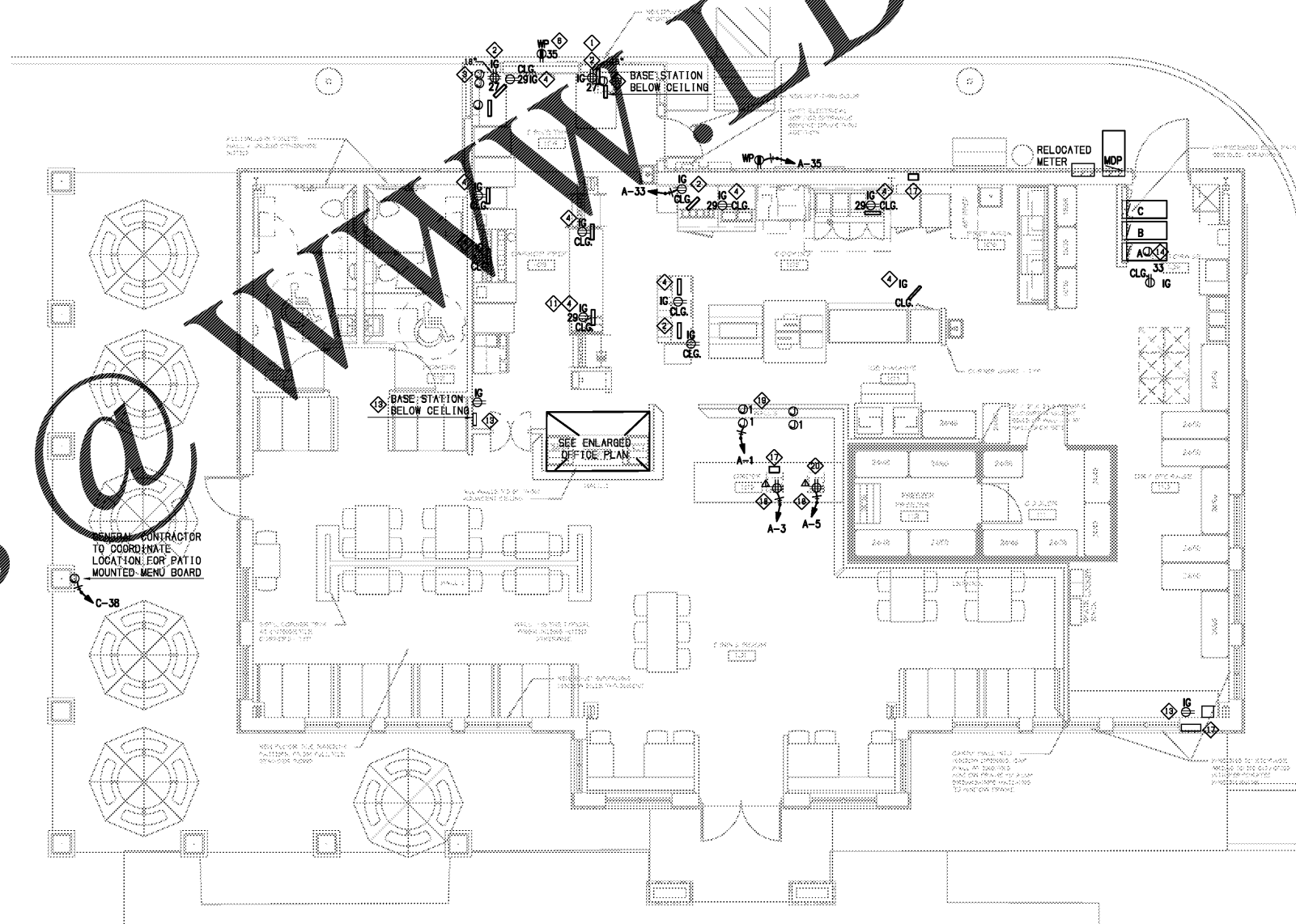
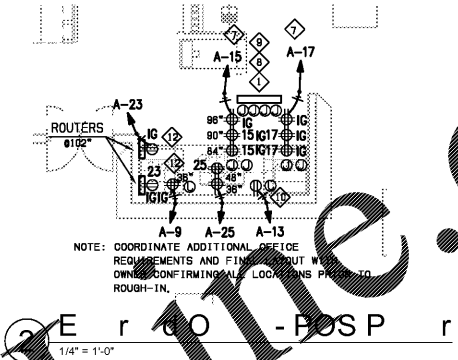
Inside Store:

- Ceiling grid finished.
- Ceiling tile in grid where monitors and power is required.
- Power in place in walls and ceiling (Operating).
- Kitchen equipment/Furniture in place and operational.
- Sonic management authority at store to coordinate placement of all equipment.
- Telephone service operational.

Outside Store:

- Underground conduit in place and correct size.
- Canopy conduit in place and correct size.
- Canopy structure painted.
- Menu housings braced/welded with A/C power box conduit in place & operational.
- All concrete for Canopies, patio & drive-thru complete.
- Label pull boxes (each end) on all underground PVC conduit.

CONTRACTOR SHALL COORDINATE FINAL LOCATION OF ALL POS LOCATIONS WITH OWNER PRIOR TO ROUGH-IN.



1 F r P - POS P r - E r
3/16" = 1'-0"



STORE #6679

6808 SIEGEN LANE
BATON ROUGE, LA 70809

PROJ. NO.: 1722
DATE: 01/22/2018

SHEET TITLE:
FLOOR PLAN -
POS POWER -
ELECTRICAL

DRAWING SHEET IS FULL SIZE AT 22" x 34"
REDUCED 11" x 17" SHEET IS HALF SIZE

SHEET NO.: E2.04

Order Plans

WWW.DIPLINE.COM