

KEYED NOTES

- 1. POS POWER CONDITIONING EQUIPMENT, PROVIDED BY POS VENDOR. REFER TO SHEET E2.03 FOR POS INFORMATION AND CONNECTIONS.
2. PROVIDE J-BOX WITH WHIP FOR FUTURE EQUIPMENT CONNECTION.
3. PROVIDE J-BOX FOR L.E.D SIGN. E.C. TO INSTALL PER MFG. RECOMMENDATION.
4. G.C. TO VERIFY W/OWNER'S REPRESENTATIVE THAT ALTERNATE EQUIPMENT IS BEING PROVIDED. IF NOT VERIFY W/OWNER'S REPRESENTATIVE WHETHER OUTLETS SHOWN TO BE PROVIDED FOR FUTURE USE OR OMITTED AS COST SAVINGS. G.C. TO COORDINATE W/OWNER'S REPRESENTATIVE AND EQUIPMENT VENDOR PRIOR TO INSTALLATION.
5. DROP DOWN CONDUIT AND CONDUCTORS THROUGH CHASE TO RECEPTACLE BELOW.
6. PROVIDE JUNCTION BOX ABOVE COOLER/FREEZER FOR COOLER/FREEZER LIGHTS AND DOOR HEATER CONNECTION. CONTRACTOR MUST FIELD VERIFY POINT OF CONNECTION ON FREEZER/COOLER UNIT IN FIELD.
7. THE OWNER HAS THE OPTION TO USE A 120V ICE MACHINE IN LIEU OF THE 208V, 1 PHASE EQUIPMENT INDICATED. CONTRACTOR MUST VERIFY EQUIPMENT SELECTION WITH OWNERS FIELD REPRESENTATIVE AND PROVIDE 120V, 1PH, 20 AMP BREAKER, IF REQUIRED.
8. CONNECT J-BOX TO EXHAUST SYSTEM INTERLOCK BOX. SEE MANUFACTURER'S CONTROL WIRING DIAGRAM. J-BOX & FANS SWITCH FURNISHED WITH HOOD.
9. PROVIDE RECEPTACLE FOR SHOW WINDOW PER NEC 210.62.
10. PROVIDE 208V, 2 POLE, 30A/2P NEMA 3R NON-FUSED DISCONNECT IN FREEZER FOR EVAPORATOR FAN CONNECTION.
11. 120V, 1P, 20 AMP WP GFI RECEPTACLE WITH WEATHREPROOF COVER FOR CONDENSATE HEAT TAPE.
12. PROVIDE 208V, 2 POLE, 30A/2P NEMA 3R NON-FUSED DISCONNECT IN COOLER FOR EVAPORATOR FAN CONNECTION.
13. EXHAUST SYSTEM WIRE INTERLOCK BOX. MOUNT ON WALL ABOVE CEILING. REF. MANUFACTURERS CONTROL WIRING DIAGRAM.
14. FIRE SUPPRESSION SYSTEM CONTROL BOX.
15. TELEPHONE INTERFACE BOX. MOUNT ON WALL BELOW CEILING ABOVE PANELS.
16. ELECTRICAL SERVICE ENTRANCE EQUIPMENT. SEE ELECTRICAL SERVICE RISER FOR ADDITIONAL INFORMATION.
17. ELECTRICAL METERING EQUIPMENT. SEE ELECTRICAL SERVICE RISER FOR ADDITIONAL INFORMATION.
18. AUTOMATIC LAWN SPRINKLER CONTROLLER. MOUNTED AT 60" A.F.F.. INSTALL 1-1/2" CONDUIT U.G. TO NEAREST LANDSCAPE AREA. WIRING BY OTHERS. REF. LANDSCAPE PLAN, IF PROVIDED. VERIFY EXACT LOCATION.
19. LIGHTING CONTROL PANEL. SEE ELEC. RISER ON SHEET E3.01 AND DETAIL ON SHEET E2.01.
20. PROVIDE SEAL-OFF FITTINGS AND FOAM SEALANT AT ALL ELECTRICAL PENETRATIONS INTO FREEZER & COOLER BOX.
21. CONTRACTOR SHALL PROVIDE HORN STROBE THAT ACTIVATES UPON DUCT SMOKE DETECTOR ACTIVATION.
22. 120V, 1PH, 20 AMP DUPLEX OUTLET FOR FUTURE SECURITY SYSTEM.
23. 120V, 1PH, 20 AMP GFI RECEPT. FOR AUTOMATIC SPRINKLER CONTROLLER AND HEAT TAPE FOR HOT AND COLD WATER LINES.
24. PROVIDE NEMA 14-30R RECEPTACLE 8" BELOW CEILING FOR POWER WASH SYSTEM. PROVIDE 5' CORD WITH MATCHING NEMA 14-30R PLUG FOR CONNECTION TO POWER WASH UNIT.
25. LOCATE DEFROST TIMER ADJACENT TO WALK-IN FREEZER. PROVIDE INTERCONNECTION WIRING BETWEEN ROOF MOUNTED CONDENSER AND EVAPORATOR AS REQUIRED. COORDINATE WITH EQUIPMENT SUPPLIER.
26. INTEGRAL CIRCUIT BREAKER PANEL FOR PRE-WIRED CENTER ISLAND DEVICES (EQUIPMENT NUMBER 41). PROVIDE SINGLE POINT CONNECTION FROM ABOVE. VERIFY EXACT LOCATION PRIOR TO ROUGH-IN.
27. PROVIDE EMPTY CONDUIT IN WALL FOR FUTURE USE. VERIFY EXACT SIZE AND ALL REQUIREMENTS WITH SONIC CONSTRUCTION MANAGER PRIOR TO BID AND ROUGH-IN.
28. PROVIDE RECESSED CLOCK TYPE RECEPTACLE AND CCTV OUTLET FOR TV SYSTEM. MOUNTED TO WALL. VERIFY EXACT LOCATION PRIOR TO ROUGH-IN. VERIFY EXACT MOUNTING.
29. J-BOX FOR ELECTRIC FIREPLACE, CONTROLLED BY SWITCH 'h' SEE E2.01. E.C. TO INSTALL EQUIPMENTS PER MFG. RECOMMENDATION.
30. PROVIDE 1-1/2" PVC CONDUIT RUN OVERHEAD TO SWITCH 'h' IN KITCHEN FOR CONTROLLER. CONDUIT TO BE PAINTED TO MATCH CEILING. SEE SHEET E2.01 FOR SWITCH LOCATION.
31. PROVIDE SURFACE MOUNTED WP, NEMA 3R, GFCI DUPLEX RECEPTACLE 12" A.F.F. WITH WEATHER RESISTANT IN-USE COVER.

ELECTRICAL SYMBOL LEGEND

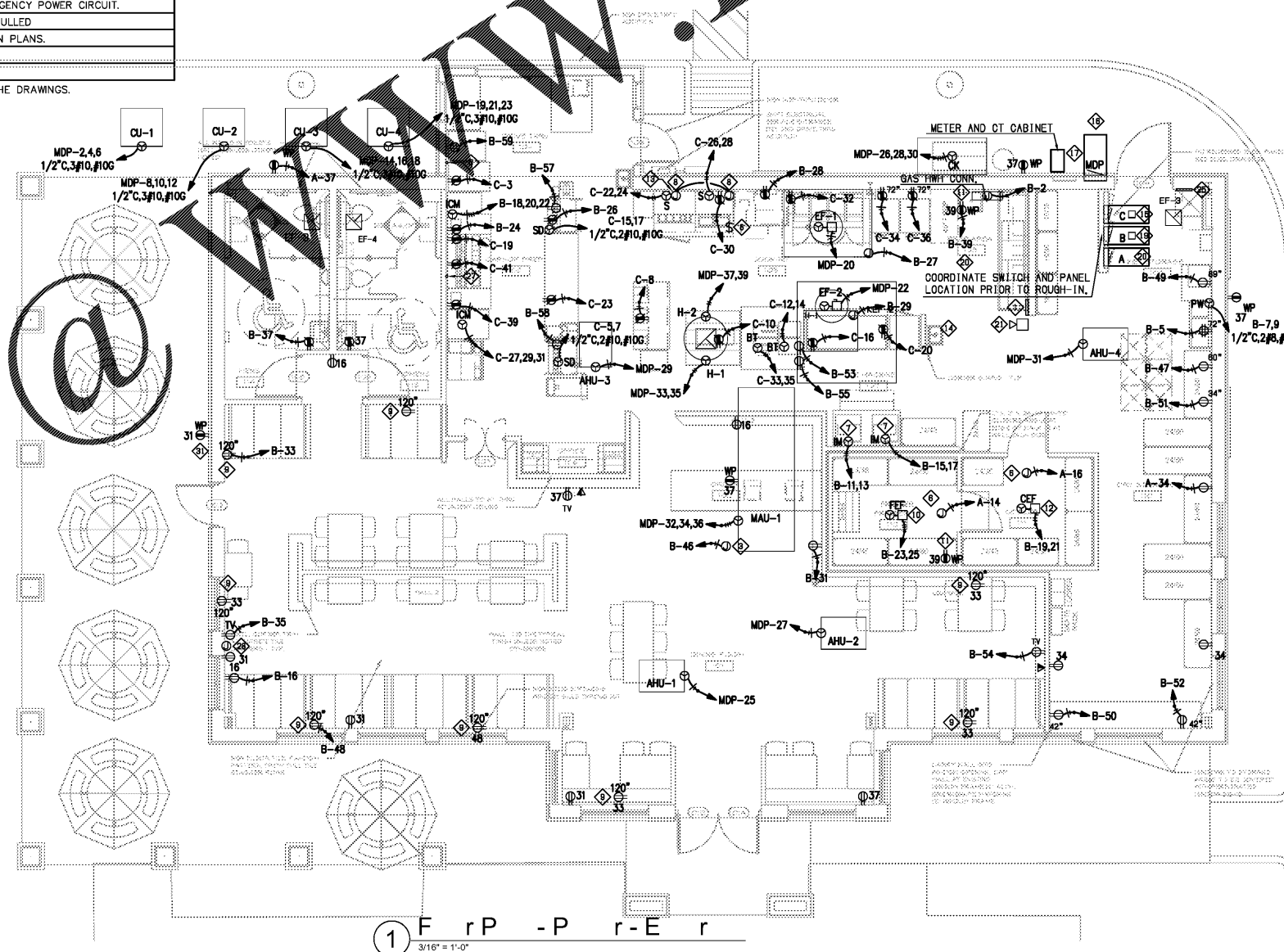
Table with 2 columns: SYMBOL and DESCRIPTION. Lists various electrical symbols such as fluorescent lighting fixture, incandescent and HID lighting fixtures, flood lighting unit, exit/emergency combo sign, strip fluorescent lighting unit, junction or pull box, duplex receptacle, quad receptacle, isolated ground duplex receptacle, ground fault interrupting receptacle, weather proof ground fault interrupting receptacle, ceiling mounted duplex receptacle, ceiling mounted quad receptacle, single pole switch, two pole switch, key operated switch, single pole switches gang mounted, occupancy sensor switch, dimmer switch, telephone outlet, data outlet, manual motor starter-disconnect switch, motor disconnect, motor, electrical panelboards, 120 or 277V circuit home run, 480, 240, 208V ckt home run, conduit concealed in walls, conduit concealed in floor, weather proof, emergency power circuit, isolated ground, plan note, fire alarm manual pull station, smoke detector.

NOTE: ALL SYMBOLS MAY NOT APPEAR ON THE DRAWINGS.

GENERAL NOTES

- 1. ALL RECEPTACLES MOUNTED AT 24" A.F.F. UNLESS NOTED OTHERWISE.
2. ALL 125V, 15 & 20 AMP RECEPTACLES LOCATED IN KITCHEN, REGARDLESS OF INTENDED USE SHALL BE PROVIDED WITH CLASS 'A' GFI PROTECTION AT THE BREAKER.
3. SEE K-SHEETS FOR EQUIPMENT PLAN & EQUIPMENT SCHEDULE.
4. REF. SHEETS "E1.0" AND "CA1.0" FOR CANOPY WIRING.
5. REFER TO DIVISION 16 ELECTRICAL SPECIFICATIONS (SHEET SP2.0) FOR ADDITIONAL INFORMATION.
6. ROUGH-INS AND FINAL CONNECTIONS FOR ALL OWNER FURNISHED EQUIP. BY E.C. UNLESS NOTED OTHERWISE.
7. ALL EMPTY CONDUIT TO HAVE PULL WIRE.
8. OWNER TO WALK THROUGH WITH GENERAL CONTRACTOR / ELECTRICAL ENGINEER FOR APPROVAL OF OUTLET PLACEMENT.
9. E.C. SHALL COORDINATE DEVISE MOUNTING HEIGHTS, RECEPTACLE NEMA CONFIGURATIONS AND EXACT ELECTRICAL REQUIREMENTS WITH THE KITCHEN EQUIPMENT SUPPLIER, EQUIPMENT SPECIFICATION SHEETS AND K-SHEETS.
10. E.C. SHALL INSTALL CORD AND PLUG KITS FOR KITCHEN EQUIPMENT AS NEEDED.
11. ALL BRANCH CIRCUITS UP TO 100'-0" SHALL UTILIZE #12 CONDUCTORS MINIMUM. ALL BRANCH CIRCUITS FROM 101'-0" TO 150'-0" IN LENGTH SHALL UTILIZE #10 CONDUCTORS MINIMUM. ALL BRANCH CIRCUITS 151'-0" UP TO 250'-0" IN LENGTH SHALL UTILIZE #8 CONDUCTORS MINIMUM. CIRCUITS ABOVE 251'-0" SHALL UTILIZE #6 CONDUCTORS MINIMUM.

- 1. CONTRACTOR SHALL COORDINATE EXACT ELECTRICAL REQUIREMENTS AND ROUGH-IN LOCATIONS OF ALL KITCHEN EQUIPMENT WITH EQUIPMENT VENDORS PRIOR TO COMMENCEMENT OF WORK.



1 F r P - P r - E r
3/16" = 1'-0"

Order Plans



STORE #6679

6808 SIEGEN LANE
BATON ROUGE, LA 70809

PROJ. NO.: 1722
DATE: 01/22/2018

SHEET TITLE:
FLOOR PLAN -
POWER -
ELECTRICAL

DRAWING SHEET IS FULL SIZE AT 22" x 34"
REDUCED 11" x 17" SHEET IS HALF SIZE

SHEET NO.: E2.03