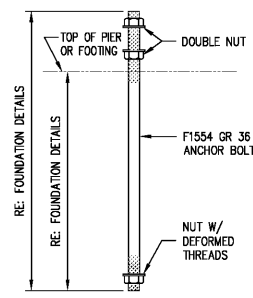
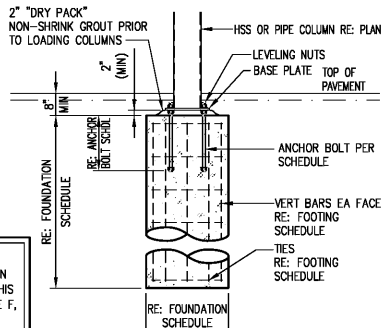


2 COLUMN BASE PLATE DETAILS
S4.02 SCALE: 1 1/2"=1'-0"

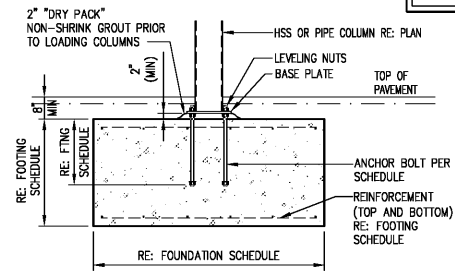


3 TYP. ANCHOR BOLT DETAIL
S4.02 SCALE: N.T.S.

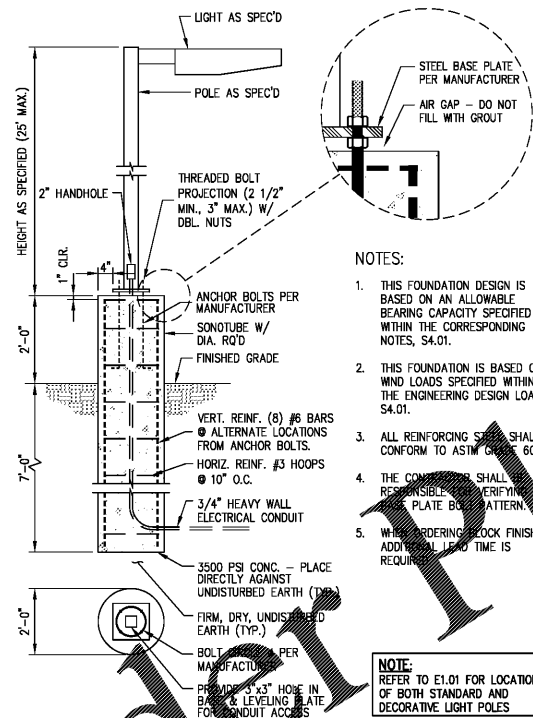
NOTE:
ALL REINFORCEMENT SHOWN IN SECTIONS AND DETAILS ON THIS SHEET TO COMPLY WITH NOTE F, REINFORCING STEEL NOTES, SHEET S1.1.



4 PI FOUNDATION DETAIL
S4.02 SCALE: 3/8"=1'-0"



5 PI ALTERNATE FOUNDATION DETAIL
S4.02 SCALE: 3/8"=1'-0"

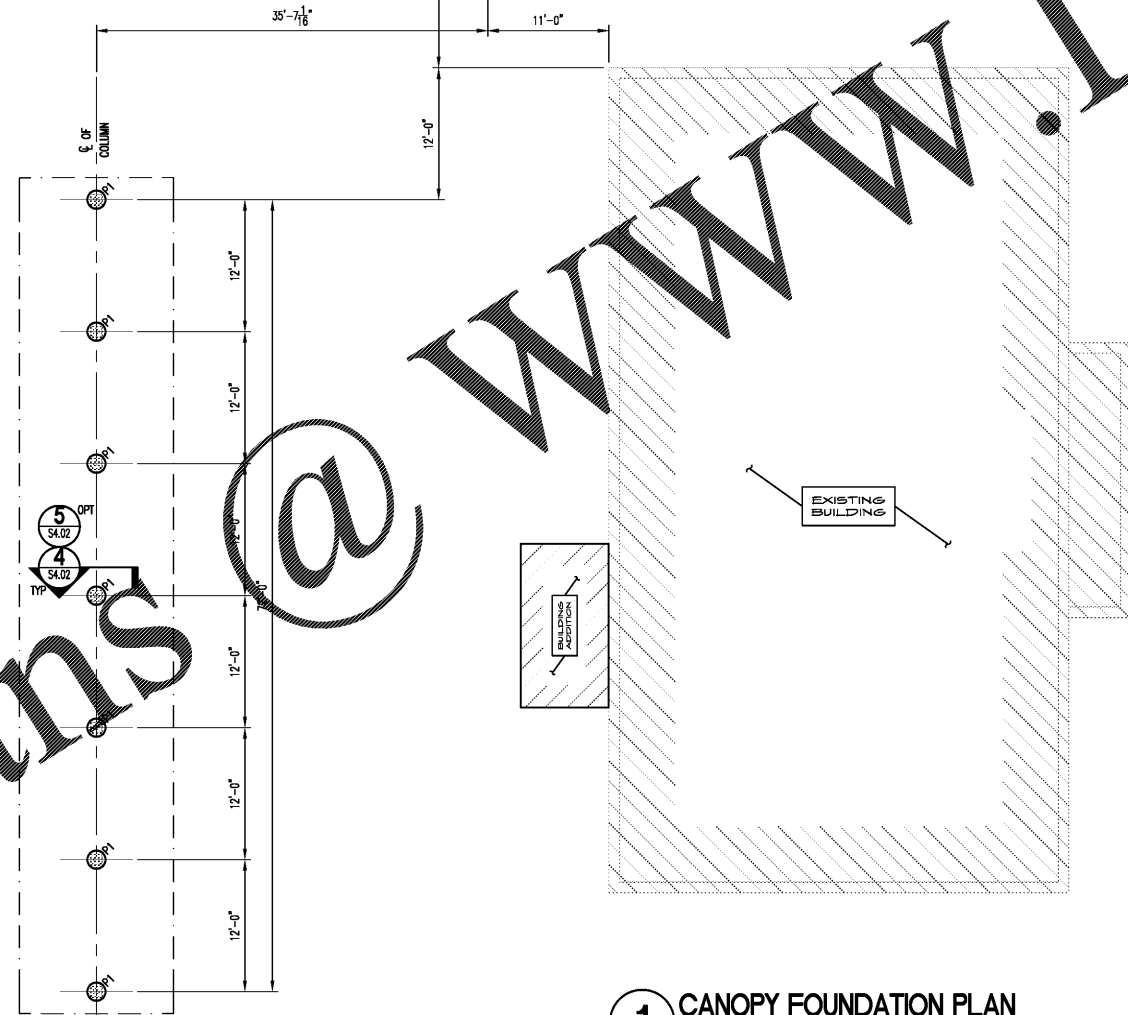
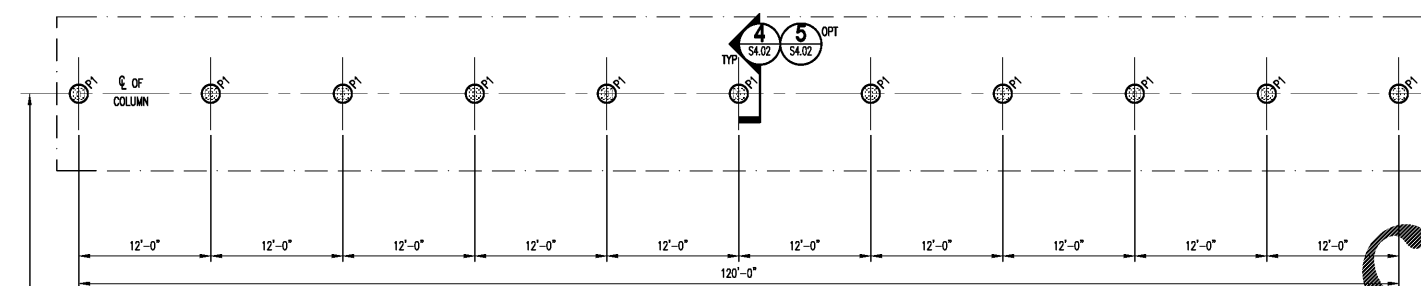


6 STANDARD LIGHT BASE DETAIL
S4.02 SCALE: 1/2"=1'-0"

NOTES:

- THIS FOUNDATION DESIGN IS BASED ON AN ALLOWABLE BEARING CAPACITY SPECIFIED WITHIN THE CORRESPONDING NOTES, S4.01.
- THIS FOUNDATION IS BASED ON WIND LOADS SPECIFIED WITHIN THE ENGINEERING DESIGN LOADS, S4.01.
- ALL REINFORCING STEEL SHALL CONFORM TO ASTM SPEC. 60.
- THE CONTRACTOR SHALL BE RESPONSIBLE FOR VERIFYING THE PLATE BOLT PATTERN.
- WHEN ORDERING LOCK FINISH, ADDITIONAL LEAD TIME IS REQUIRED.

NOTE:
REFER TO E1.01 FOR LOCATIONS OF BOTH STANDARD AND DECORATIVE LIGHT POLES



1 CANOPY FOUNDATION PLAN
SCALE: 1/8"=1'-0"

NOTE(S):

- VERIFY ALL DIMENSIONS WITH ARCHITECTURAL DRAWINGS AND EXISTING CONDITIONS.
- REFER TO SITE PLAN FOR LOCATION OF CAR STALL CANOPY

FOUNDATION SCHEDULE

DRILLED PIERS			
PIER NUMBER	DIAMETER	DEPTH	
P1	2'-0"	7'-0"	
OPTIONAL SPREAD FOOTINGS			
FOOTING NUMBER	WIDTH	LENGTH	DEPTH
P1	5'-0"	5'-0"	2'-0"

REINFORCING SCHEDULE

DRILLED PIERS		
PIER NUMBER	VERTICAL REBAR	HORIZONTAL REBAR
P1	8 - #6	#3 @ 12" C/C
OPTIONAL SPREAD FOOTINGS		
FOOTING NUMBER	VERTICAL REBAR	HORIZONTAL REBAR
P1	NOT USED	#6 @ 12" C/C EW T&B

ANCHOR BOLT SCHEDULE

COLUMN NUMBER	ANCHOR BOLT
C1	3/4" DIA. X 24" W/MIN. 18" EMBED



STORE #6679

6808 SIEGEN LANE
BATON ROUGE, LA 70809

PROJ. NO.: 1722
DATE: 10/16/11

SHEET TITLE:

CANOPY FOUNDATION
PLAN & DETAILS

SHEET NO.:

S4.02