

3
A2.02
ELEVATION @ HOOD - TYP.
1/4" = 1'-0"

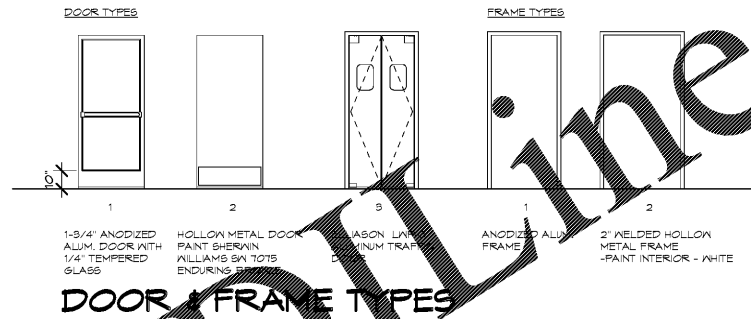
DOOR TYPES & HARDWARE SCHEDULE																						
DOOR #	DOOR TYPE	FRAME MARK	DIMENSIONS		HARDWARE								DETAILS		REMARKS							
			WIDTH	HEIGHT	CLOSER	PUSH BAR	PULL PLATE	KICK PLATE	THRESHOLD	SWEEP	DIAPHRAGM CYLINDER	1/2" PAIR HINGES	LEVER HANDLE	WETTERS/STRIPPING		WALL BUMPER	2" FISH EYE	CONTINUOUS HINGE	PRIVATE LOCK	PANIC HARDWARE	DOOR HEAD	DOOR JAMB
101A	1	F	3'-0"	6'-8"	•	•	•	•	•	•	•	•	•	•	•	•	•	•	•	•	•	ADAMS RITE 8822 CONCEALED VERTICAL ROD EXIT DEVICE
101B	1	F	3'-0"	6'-8"	•	•	•	•	•	•	•	•	•	•	•	•	•	•	•	•	•	ADAMS RITE 8822 CONCEALED VERTICAL ROD EXIT DEVICE
102	1	F	3'-0"	6'-8"	•	•	•	•	•	•	•	•	•	•	•	•	•	•	•	•	•	ADAMS RITE 8802 36"
103	1	F	3'-0"	7'-0"	•	•	•	•	•	•	•	•	•	•	•	•	•	•	•	•	•	ADAMS RITE 8802 36"
104	2	2	4'-0"	7'-0"	•	•	•	•	•	•	•	•	•	•	•	•	•	•	•	•	•	ADAMS RITE 8802 36"
105	2	2	3'-0"	7'-0"	•	•	•	•	•	•	•	•	•	•	•	•	•	•	•	•	•	ADAMS RITE 8802 36"
106	2	2	3'-0"	7'-0"	•	•	•	•	•	•	•	•	•	•	•	•	•	•	•	•	•	ADAMS RITE 8802 36"
107	3		3'-0"	7'-0"	•	•	•	•	•	•	•	•	•	•	•	•	•	•	•	•	•	ELIASON LWP-3 ALUMINUM TRAFFIC DOOR

DOOR NOTES:

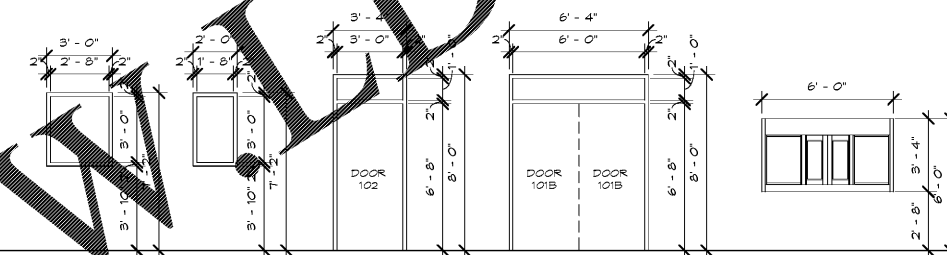
1. ALL EXIT DOORS SHALL BE OPERABLE WITHOUT THE USE OF A KEY OR ANY SPECIAL KNOWLEDGE OR EFFORT
2. ALL THRESHOLDS SHALL NOT EXCEED 1/2" IN HEIGHT & SHALL HAVE BEVELED SIDES (1:2 SLOPE) WHEN THE HEIGHT IS GREATER THAN 1/4"
3. THE BOTTOM 10" OF ALL DOORS SHALL HAVE SMOOTH, UNINTERRUPTED SURFACES
4. REFER TO "ARCHITECTURAL BARRIER STANDARDS" IN ACCESSIBILITY DETAILS
5. SEE ADDITIONAL HARDWARE NOTES FOR EXISTING DOORS NOTED ON PLANS.

**DOOR SECURITY

- ADAMS RITE 8802ZLD 36"
- ROSSLAKE CONTROLLER ACS-44
- DOOR LOOP
- RM CYLINDER KEVED TO OTHER CYLINDERS
- 12 VOLT POWER SUPPLY
- 25 EA. KEY FOSS MODEL ATR216J
- 25 EA. KEY GOLB LUCKY LINE MODEL 41601



WINDOW TYPES



FINISHES:

TYPICAL FOR ALL AREAS OF KITCHEN EXCEPT FOR VARIATIONS AT HOOD AREA OF GRILL AND COOLER/FREEZER AREA. SEE NOTES BELOW.

FLOOR: RUBBER FLOORING WITH WELDED BEAMS, TRANSITION TO NEW FLOORING & EXISTING THRESHOLDS	WALLS: 1/2" PLYWOOD SHEATHING FIBERGLASS REINFORCED PANEL (FRP) MARLITE - P-100 WHITE REPLACE AS NECESSARY	BASE: INTEGRAL BASE AS PART OF RUBBER FLOORING SYSTEM	CEILING: 2' X 4' VINYL FACED GYPSUM PANELS IN SUSPENDED SYSTEM US6 GLIMA PLUS, WHITE IV MATCHING GRD
---	---	--	---

HOOD AREA (SEE FLOOR PLAN FOR LOCATION AND EXTENT OF NONCOMBUSTIBLE CONSTRUCTION)

- FLOOR, BASE, AND CEILING FINISHES ARE THE SAME AS KITCHEN
- WALLS ARE TO BE 1/2" CEMENT BOARD OR TYPE 'X' GYPSUM BOARD THROUGHOUT NONCOMBUSTIBLE CONSTRUCTION AREA AND STAINLESS STEEL PANEL (NSF) FINISH FROM 18" TO EACH SIDE AND BEHIND THE HOOD

DINING ROOM (SEE RENOVATED FLOOR PLAN FOR CLARIFICATION ON WALL COLOR & FINISH LOCATIONS)

FLOOR: DALTILE WOOD LOOK EMBLEM RANDOM T X 20" PATTERN 85% 'GRAY' EM03 15% 'BEIGE' EM01 GROUT 3/16" GROUT JOINTS CBP #935 WINTER GRAY FIELD OF 'GRAY' WITH RUNS OF 2, 3, OR 4 'BEIGE' TILES RANDOMLY PLACED 85% TO 15%	WALLS: WALL 1: DINING ROOM 5 COURSES + BULLNOSE DALTILE WOOD LOOK EMBLEM RANDOM T X 20" PATTERN 85% 'BEIGE' 15% 'GRAY' GROUT 3/16" GROUT JOINTS CBP #935 WINTER GRAY FIELD OF 'BEIGE' WITH RUNS OF 2 OR 3 'GRAY' TILES RANDOMLY PLACED PAINT ABOVE: MEDIUM ORANGE PEEL TEXTURE SHERWIN WILLIAMS SW7534 OUTERBANKS, SEMI-GLOSS, LATEX WALL 2: KNEE WALL AND ACCENT ADJACENT ORDER SAME TILE AS WALL 1 TO CEILING OR KNEE WALL CAP 1/2" SOLID SURFACING CORIAN CONCRETE WALL 3: BEHIND ORDER & WRAPPINGS ALONG SIDE DALTILE SHOWSCAPE CURRANT SOLID #8112-GRD PATTERN FULL HEIGHT GROUT 1/16" GROUT JOINTS CBP #935 WINTER GRAY WALL 4: TOILETS SAME TILE AS WALL 1 WITH 9 COURSES + BULLNOSE	BASE: SEE WALLS	CEILING: SUSPENDED CEILING AT DINING AND TOILET CORRIDOR: 2' X 2' US6 FROST GLIMA PLUS, SANDSTONE #090 BULKHEADS/SOFFITS: 1/2" GYPSUM BOARD, SMOOTH FINISH PAINTED SHERWIN WILLIAMS SW6061 FIREWORKS - SATIN/EGG-SHELL
---	---	--------------------	--

TOILETS

FLOOR: DALTILE WOOD LOOK EMBLEM RANDOM T X 20" PATTERN 85% 'GRAY' EM03 15% 'BEIGE' EM01 GROUT 3/16" GROUT JOINTS CBP #935 WINTER GRAY FIELD OF 'GRAY' WITH RUNS OF 2, 3, OR 4 'BEIGE' TILES RANDOMLY PLACED 85% TO 15%	WALLS: 1/2" TYPE 'X' GYPSUM BOARD WATER CLOSET WALL: WALL 3: BEHIND ORDER & WRAPPINGS ALONG SIDE DALTILE SHOWSCAPE CURRANT SOLID #8112-GRD PATTERN FULL HEIGHT GROUT 1/16" GROUT JOINTS CBP #935 WINTER GRAY ALL OTHER WALLS: WALL 4: 9 COURSES + BULLNOSE DALTILE WOOD LOOK EMBLEM RANDOM T X 20" PATTERN 85% 'BEIGE' 15% 'GRAY' GROUT 3/16" GROUT JOINTS CBP #935 WINTER GRAY FIELD OF 'BEIGE' WITH RUNS OF 2 OR 3 'GRAY' TILES RANDOMLY PLACED PAINT ABOVE: MEDIUM ORANGE PEEL TEXTURE SHERWIN WILLIAMS SW7534 OUTERBANKS, SEMI-GLOSS, LATEX	BASE: SEE WALLS	CEILING: 1/2" GYPSUM BOARD PAINTED SHERWIN WILLIAMS SW1006 EXTRA WHITE - SEMI-GLOSS DOOR & FRAMES: PAINTED SHERWIN WILLIAMS SW1055 ENDURING BRONZE - SEMI-GLOSS
---	--	--------------------	---



STORE #6679

6808 SIEGEN LANE
BATON ROUGE, LA 70809

PROJ. NO.: 1722
DATE: 10/16/17

SHEET TITLE:

DOOR & FINISH SCHEDULES

SHEET NO.:

A2.02

Order Plans @ WWW.WLDLINE.COM