

2.11 CONCRETE MIXTURES FOR REINFORCING ELEMENTS

- A. Concrete: Proportion nominal weight concrete materials as follows: 1. Minimum Compressive Strength: 3000 psi (20.7 MPa) at 28 days.

2.12 FABRICATING REINFORCEMENT

- 1. Fabricate steel reinforcement according to CRSI's "Manual of Standard Practice."

2.13 CONCRETE CURING

- A. General: Protect freshly placed concrete from premature drying and excessive cold or hot temperatures. Comply with ACI 308.1 for post-curing protection.

2.14 INSTALLATION

- A. Wetting of masonry: Use of wetting agents is not required.

2.15 EXECUTION

- 1. SUMMARY: A. Exterior masonry walls.

3.1 UNFINISHED INTERIOR

- 1. Minimum Compressive Strength: 3000 psi (20.7 MPa) at 28 days.

3.2 FIELD QUALITY CONTROL

- A. Testing and inspecting: The Owner will engage a special inspector to qualified testing and inspecting agency to perform tests, inspections, and Special Inspections and prepare test reports.

3.3 FINISHES

- 1. Finish: General: Prepare all surfaces to receive a finish.

3.4 UNFINISHED EXTERIOR

- A. General: Comply with CRSI's "Manual of Standard Practice" for placing formwork.

3.5 FIELD QUALITY CONTROL

- A. Testing and inspecting: The Owner will engage a special inspector to qualified testing and inspecting agency to perform tests, inspections, and Special Inspections and prepare test reports.

4.1 MASONRY

- 1. DESCRIPTION: A. Work Includes: Provide all masonry, grout, mortar, related reinforcing, and installation as shown on the drawings and specified herein.

4.2 PRODUCTS

- 1. BRICK: A. General: Provide masonry units and mortar as specified herein.

4.3 FINISHES

- A. General: Comply with ACI 308.1 for post-curing protection.

4.4 INSTALLATION

- A. Wetting of masonry: Use of wetting agents is not required.

4.5 EXECUTION

- 1. SUMMARY: A. Exterior masonry walls.

4.6 UNFINISHED INTERIOR

- A. General: Comply with CRSI's "Manual of Standard Practice" for placing formwork.

4.7 FIELD QUALITY CONTROL

- A. Testing and inspecting: The Owner will engage a special inspector to qualified testing and inspecting agency to perform tests, inspections, and Special Inspections and prepare test reports.

4.8 FINISHES

- 1. Finish: General: Prepare all surfaces to receive a finish.

4.9 INSTALLATION

- A. Wetting of masonry: Use of wetting agents is not required.

4.10 EXECUTION

- 1. SUMMARY: A. Exterior masonry walls.

5.1 GENERAL

- 1. SUMMARY: A. Exterior masonry walls.

5.2 FIELD QUALITY CONTROL

- A. Testing and inspecting: The Owner will engage a special inspector to qualified testing and inspecting agency to perform tests, inspections, and Special Inspections and prepare test reports.

5.3 FINISHES

- 1. Finish: General: Prepare all surfaces to receive a finish.

5.4 INSTALLATION

- A. Wetting of masonry: Use of wetting agents is not required.

5.5 EXECUTION

- 1. SUMMARY: A. Exterior masonry walls.

6.1 GENERAL

- 1. SUMMARY: A. Exterior masonry walls.

6.2 FIELD QUALITY CONTROL

- A. Testing and inspecting: The Owner will engage a special inspector to qualified testing and inspecting agency to perform tests, inspections, and Special Inspections and prepare test reports.

6.3 FINISHES

- 1. Finish: General: Prepare all surfaces to receive a finish.

6.4 INSTALLATION

- A. Wetting of masonry: Use of wetting agents is not required.

6.5 EXECUTION

- 1. SUMMARY: A. Exterior masonry walls.

6.6 GENERAL

- 1. SUMMARY: A. Exterior masonry walls.

6.7 FIELD QUALITY CONTROL

- A. Testing and inspecting: The Owner will engage a special inspector to qualified testing and inspecting agency to perform tests, inspections, and Special Inspections and prepare test reports.

6.8 FINISHES

- 1. Finish: General: Prepare all surfaces to receive a finish.

6.9 INSTALLATION

- A. Wetting of masonry: Use of wetting agents is not required.

6.10 EXECUTION

- 1. SUMMARY: A. Exterior masonry walls.

7.1 GENERAL

- 1. SUMMARY: A. Exterior masonry walls.

7.2 FIELD QUALITY CONTROL

- A. Testing and inspecting: The Owner will engage a special inspector to qualified testing and inspecting agency to perform tests, inspections, and Special Inspections and prepare test reports.

7.3 FINISHES

- 1. Finish: General: Prepare all surfaces to receive a finish.

7.4 INSTALLATION

- A. Wetting of masonry: Use of wetting agents is not required.

7.5 EXECUTION

- 1. SUMMARY: A. Exterior masonry walls.

8.1 GENERAL

- 1. SUMMARY: A. Exterior masonry walls.

8.2 FIELD QUALITY CONTROL

- A. Testing and inspecting: The Owner will engage a special inspector to qualified testing and inspecting agency to perform tests, inspections, and Special Inspections and prepare test reports.

8.3 FINISHES

- 1. Finish: General: Prepare all surfaces to receive a finish.

8.4 INSTALLATION

- A. Wetting of masonry: Use of wetting agents is not required.

8.5 EXECUTION

- 1. SUMMARY: A. Exterior masonry walls.

8.6 GENERAL

- 1. SUMMARY: A. Exterior masonry walls.

8.7 FIELD QUALITY CONTROL

- A. Testing and inspecting: The Owner will engage a special inspector to qualified testing and inspecting agency to perform tests, inspections, and Special Inspections and prepare test reports.

8.8 FINISHES

- 1. Finish: General: Prepare all surfaces to receive a finish.

8.9 INSTALLATION

- A. Wetting of masonry: Use of wetting agents is not required.

8.10 EXECUTION

- 1. SUMMARY: A. Exterior masonry walls.

9.1 GENERAL

- 1. SUMMARY: A. Exterior masonry walls.

9.2 FIELD QUALITY CONTROL

- A. Testing and inspecting: The Owner will engage a special inspector to qualified testing and inspecting agency to perform tests, inspections, and Special Inspections and prepare test reports.

9.3 FINISHES

- 1. Finish: General: Prepare all surfaces to receive a finish.

9.4 INSTALLATION

- A. Wetting of masonry: Use of wetting agents is not required.

9.5 EXECUTION

- 1. SUMMARY: A. Exterior masonry walls.

9.6 GENERAL

- 1. SUMMARY: A. Exterior masonry walls.

9.7 FIELD QUALITY CONTROL

- A. Testing and inspecting: The Owner will engage a special inspector to qualified testing and inspecting agency to perform tests, inspections, and Special Inspections and prepare test reports.

9.8 FINISHES

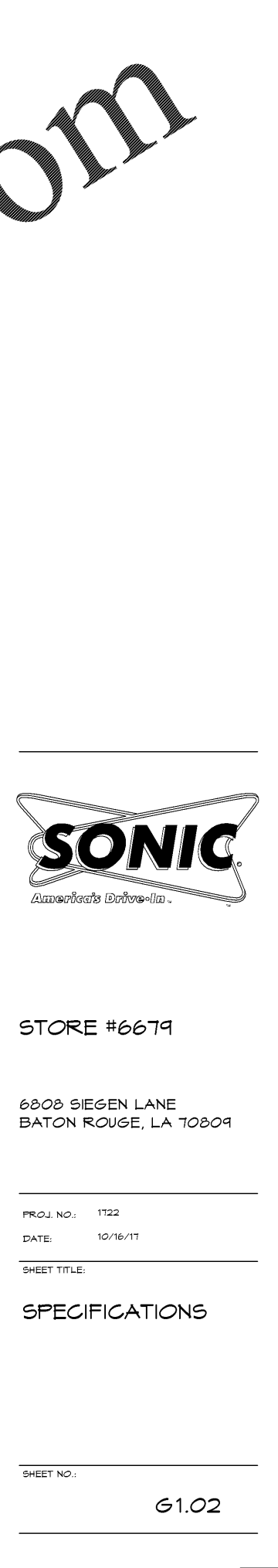
- 1. Finish: General: Prepare all surfaces to receive a finish.

9.9 INSTALLATION

- A. Wetting of masonry: Use of wetting agents is not required.

9.10 EXECUTION

- 1. SUMMARY: A. Exterior masonry walls.



6679

SONIC

America's Drive-In

STORE #6679

6808 SIEGEN LANE
BATON ROUGE, LA 70809

PROJ. NO.: 1722

DATE: 10/16/17

SHEET TITLE:

SPECIFICATIONS

SHEET NO.:

G1.02