

1 **A1** **FRAMING PLAN**
3/16" = 1'-0"

PLAN LEGEND

| | |
|-----|--------------------|
| --- | EXISTING |
| --- | INTERIOR PARTITION |
| --- | NON-INSULATED |

SYMBOL LEGEND

| | |
|----|----------------------------------|
| 11 | ROOM NUMBER |
| 11 | DOOR NUMBER |
| 1 | SECTION MARK SHEET WHERE SHOWN |
| B | ELEVATION MARK SHEET WHERE SHOWN |
| 01 | DETAIL MARK SHEET WHERE SHOWN |
| 18 | EQUIPMENT MARK |

DOOR/OPENING SCHEDULE NOTES

1. PAINT DOOR FRAME TO MATCH ADJACENT WALL FINISH.
2. DOOR TYPE "S1" TO BE MANUFACTURED BY CHASE DOORS MODEL SD2000 W/ STAINLESS STEEL DOOR PANELS. HARDWARE TO BE FURNISHED W/ DOOR.
3. DOOR W/ 12" x 12" VISION PANEL INSTALLED AT 62" A.F.F. PANEL MUST BE WIRE-REINFORCED AND MEET OR EXCEED ALL APPLICABLE CODES.

DOOR HARDWARE GROUPS

- GROUP #10 - STOCKROOM
 (1) 1/2" PAIR BUTTS - HAGER E08B1100 4.5 X 4.5 US26D
 (1) CLOSER - HAGER 5200 M/L 14 ALUM
 (1) STOREROOM LOCKSET - SCHLAGE NDB0PD RHODES US26D
 (1) STOP - HAGER 242F X US26D
 (1) KICKPLATES - HAGER 190S 10 X 34 US32D

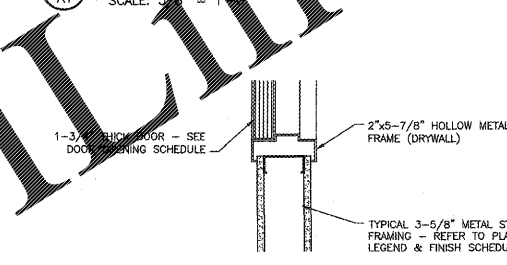
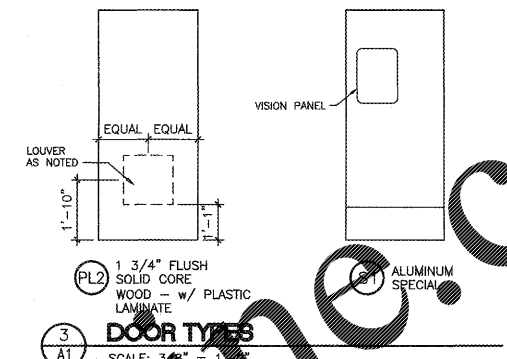
GENERAL DOOR AND FRAME NOTES

- A. ALL INTERIOR H.M. FRAMES TO BE KNOCK-DOWN TYPE AND EXTERIOR H.M. FRAMES TO BE WELDED.
- B. EXTERIOR DOORS TO HAVE INSULATED CORES.
- C. THE OWNER IS TO PROVIDE INTERIOR GRAPHIC DOOR PLAQUES FOR CONTRACTOR'S INSTALLATION W/ TAMPER-PROOF SCREWS. COORDINATE LOCATIONS W/ OWNER'S REPRESENTATIVE.

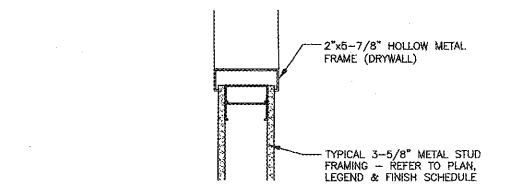
PILOT DOOR / OPENING SCHEDULE

| MARK | ROOM NAMES | DOOR SIZE | OPENING SIZE | DOOR TYPE | FRAME TYPE | THRESHOLD TYPE | HARDWARE GROUP | REMARKS |
|------|--------------------|---------------|---------------|-----------|------------|----------------|----------------|---------|
| (S1) | SUBWAY DINING ROOM | 3'-0" x 7'-0" | 3'-4" x 7'-2" | PL2 | F6 | - | 10 | 1,3 |
| (S2) | SUBWAY SERVING | 3'-0" x 7'-0" | 3'-4" x 7'-2" | S1 | F10 | - | - | 1,2 |

* ALL LAMINATED DOORS ARE TO BE "MONTICELLO MAPLE" LAMINATE ON BOTH SIDES UNLESS OTHERWISE NOTED IN DOOR/OPENING SCHEDULE.



F6 JAMB / HEAD (SM)
SCALE: 1-1/2" = 1'-0" DET008



F10 JAMB
SCALE: 1-1/2" = 1'-0" DET008

SUBWAY FINISH SCHEDULE

| ROOM MARK | ROOM NAME | FLOOR | COVE BASE | WALL | CEILING | NOTES |
|-----------|----------------|----------|----------------|-----------|--------------------|-------|
| S1 | SUBWAY DINING | FT-S1 | TO MATCH FT-S1 | EXISTING | STANDARD 9'-6" | 1 |
| S2 | SUBWAY SERVING | EXISTING | EXISTING | GWB/PLYWD | VINYL 9'-9 7/8"-0" | 1,2 |

FINISH ABBREVIATIONS

- ACT2 ARMSTRONG "VLRH90" #870, 24" X 48" COATED HIGH HUMIDITY MINERAL FIBER BASE "CLASS A"
- ACT3 STRONG "FINE FISHER SECOND LOOK II" #1761 - "CLASS A"
- FRP FIBERGLASS REINFORCED POLYESTER FINISH SYSTEM - MARLITE 47 1/2" X 95 1/2" X 3/32", INDURO FRP. PREFINISHED WITH WILSONART CLASSIC LINEN 4943-38. HARMONIZING ALUMINUM TRIM, PAINTED WITH SHERWIN WILLIAMS FUNCTIONAL GRAY (#SW7024) EGGSHELL FINISH, INSTALLED VERTICALLY.
- PNT-S1 PAINT - SHERWIN WILLIAMS #SW7005 "SUPER WHITE", FLAT ENAMEL.
- WC-S1 BRAND LIGHT GREEN WALLCOVERING - SUNGLO FABRICS 54" FOCAL WALL VINYL WALLCOVERING #82456, E-349 HEAVY CORD. COLOR: PANTONE 367C-GRADATION-DARKER COLOR. TEDLAR COATED. INSTALLED VERTICALLY.
- WC-S2 CHEVRON WALLCOVERING - SUNGLO FABRICS 54" WIDE VINYL WALLCOVERING COLOR: BLOTCH-SW7029 AGREEABLE GREY, TEDLAR COATED. INSTALLED VERTICALLY.
- WC-S3 LINEN WALLCOVERING - SUNGLO FABRICS 52" WIDE VINYL WALLCOVERING COLOR: BLOTCH-SW7029 AGREEABLE GREY. INSTALLED VERTICALLY.
- WC-S4 SHIMMER WALLCOVERING - SUNGLO FABRICS SHIMMER #850024 52"/54" WIDE VINYL WALLCOVERING. INSTALLED VERTICALLY.
- FT-S1 CROSSVILLE - "SILVER SANDS" (12"x24") COLOR: AD-126-2 LATCRETE PERMACOLOR SELECT; CEMENTITIOUS GROUT, COLOR: 35 MOCHA 3/16" THICK GROUT LINES

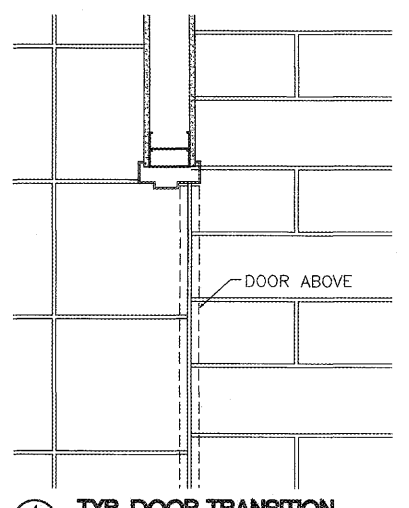
FINISH SCHEDULE NOTES

1. THE CONTRACTOR IS TO INSTALL OWNER-PROVIDED SIGNAGE AND DECOR IN SALES & DINING AREAS. VERIFY LOCATIONS W/ OWNER'S REPRESENTATIVE PRIOR TO INSTALLATION.
2. SEE THIS SHEET FOR PAINT FINISH OF DOORS AND FRAMES.

SUBWAY FLOOR TILE LEGEND

| | |
|-------|---|
| FT-S1 | CROSSVILLE - "SILVER SANDS" (12"x24") COLOR: AD-126-2 LATCRETE PERMACOLOR SELECT; CEMENTITIOUS GROUT, COLOR: 35 MOCHA 3/16" THICK GROUT LINES |
|-------|---|

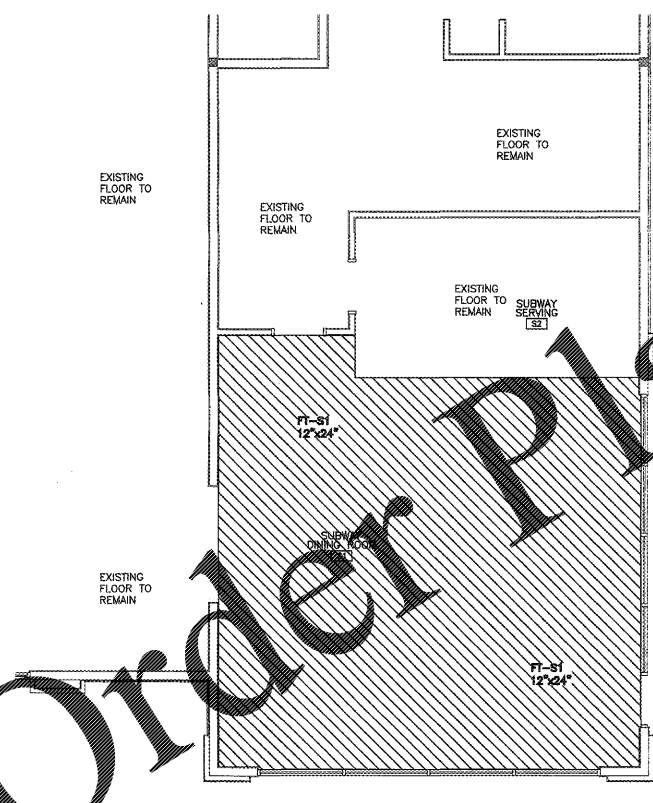
NOTE: ALL CONTRACTORS ARE TO CONTACT LOUISVILLE TILE TO RECEIVE PLOT'S PREFERRED TILE/MATERIAL PRICING AND DEDICATED INVENTORY. QUOTE CENTRAL: 502-452-2317 OR KNOXVILLE BRANCH: 865-675-8453



4 **A1** **TYP. DOOR TRANSITION**
N.T.S.

NOTE:
1. SEE THIS SHEET FOR NOTES, FINISH SCHEDULES, LEGENDS AND DETAILS.
2. THE HATCH PATTERN SHOWN IDENTIFIES THE CORRECT TILE BY "DEGREE OF SHADING" VERIFY PATTERN WITH CONSTRUCTION MANAGER BEFORE INSTALLATION.

NOTE:
ALL TILE TRANSITIONS NEED TO OCCUR UNDER THE DOOR. CHECK ORIENTATION ON FLOOR PLAN AND LOCATE EACH TRANSITION ACCORDINGLY.



1 **A1** **FLOOR FINISH PLAN**
3/16" = 1'-0"

FRAMING AND FLOOR FINISH PLANS,
NOTES, LEGENDS AND SCHEDULES
PILOT TRAVEL CENTER
130 HONDA DRIVE
LINCOLN, AL 35096

| | | | | | |
|------|----------|----------|--------|----------------------|----------|
| DATE | 02-16-18 | DRAWN BY | B.R.A. | PROJECT | 197-1829 |
| DATE | | REV | | REVISION DESCRIPTION | |
| DATE | | REV | | REVISION DESCRIPTION | |

SHEET:
A1