

DRAWING INDEX

ARCHITECTURAL

- D1 DEMOLITION PLAN
- A1 FRAMING AND FLOOR FINISH PLANS, NOTES, LEGENDS AND SCHEDULES
- A2 REFLECTED CEILING PLAN DEMOLITION AND RENOVATION
- A3 EQUIPMENT PLAN AND SCHEDULE
- A4 EXTERIOR ELEVATIONS RENOVATION
- A5 INTERIOR ELEVATIONS RESTAURANT

MECHANICAL

- M1 MECHANICAL PLAN DEMOLITION AND RENOVATION LAYOUT
- M2 MECHANICAL PLAN SUBWAY HOOD

PLUMBING

- P1 PLUMBING PLAN DEMOLITION AND RENOVATION LAYOUT

ELECTRICAL

- E0 ELECTRICAL SYMBOL LEGEND
- E1 TRAVEL CENTER FLOOR PLAN LIGHTING, POWER, COMM. AND DEMO
- E2 TRAVEL CENTER PANELBOARD SCHEDULES

SUBWAY - FOR REFERENCE ONLY

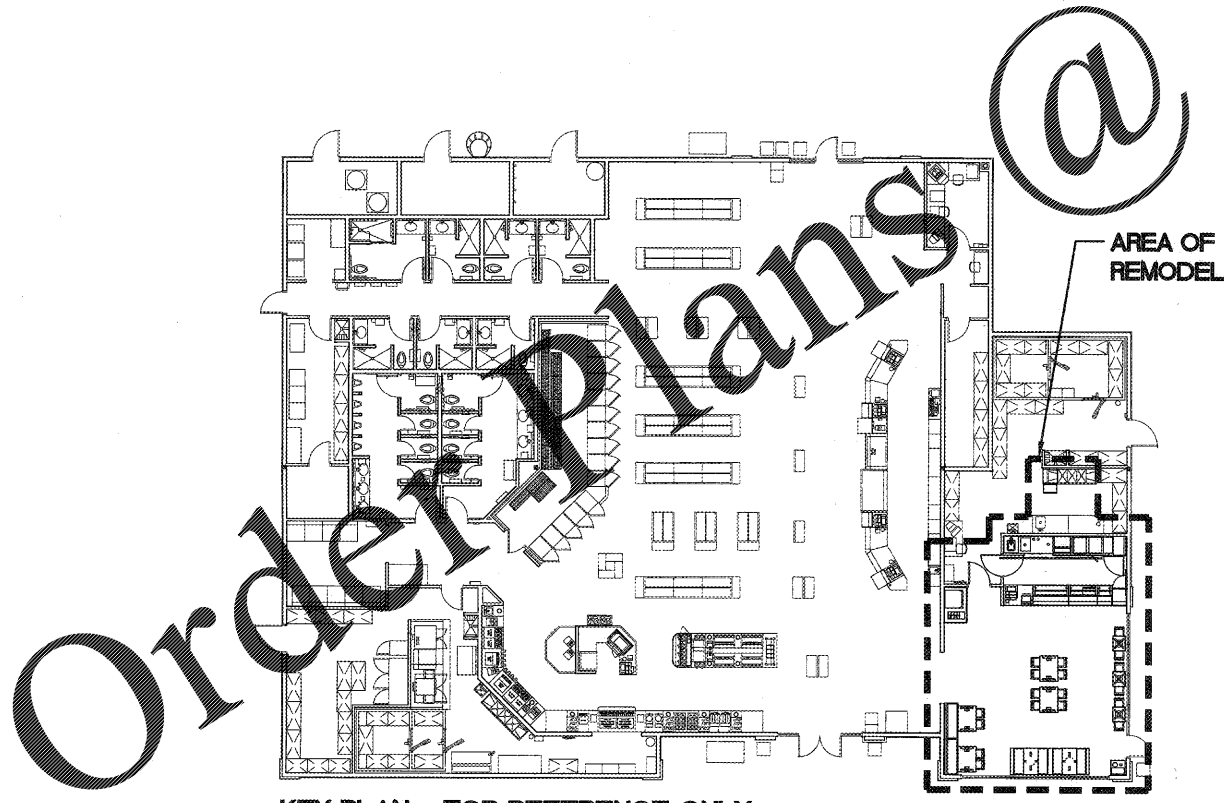
- 1 SUBWAY SHEET 1
- 2 SUBWAY SHEET 2
- 3 SUBWAY SHEET 3
- 4 SUBWAY SHEET 4
- 1 OF 2 EQUIPMENT BACK-UP SHEETS
- 2 OF 2 EQUIPMENT BACK-UP SHEETS



PILOT TRAVEL CENTER

100 HONDA DRIVE
LINCOLN, AL 35096

WWW.LJLINC.COM



KEY PLAN - FOR REFERENCE ONLY

N.T.S.

EXISTING BUILDING INFORMATION

CODES
2009 INTERNATIONAL BUILDING CODE

CLASSIFICATION
TYPE VB, UNPROTECTED, UNSPRINKLED

OCCUPANCY
PRINCIPLE INTENDED USE - MERCANTILE

GROUP M - MERCANTILE, CONVENIENCE STORE
GROUP A-2 - SMALL ASSEMBLY, RESTAURANT

TOTAL SQUARE FOOTAGE: 9,667 SQ. FT.

NOTE: ALL NEW WORK IS WITHIN AN EXISTING FACILITY. THE RENOVATIONS WILL NOT CHANGE THE EXISTING, USE, OCCUPANCY, EGRESS, STRUCTURE, OR MAJOR SYSTEMS.

PROJECT SUMMARY

REMODEL OF A EXISTING TRAVEL CENTER WITH THE FOLLOWING COMPONENTS:

- NEW SUBWAY SERVING EQUIPMENT
- NEW SUBWAY DINING ROOM FURNITURE AND DECOR
- NEW SUBWAY EXTERIOR FINISHES

DEVELOPED BY: