

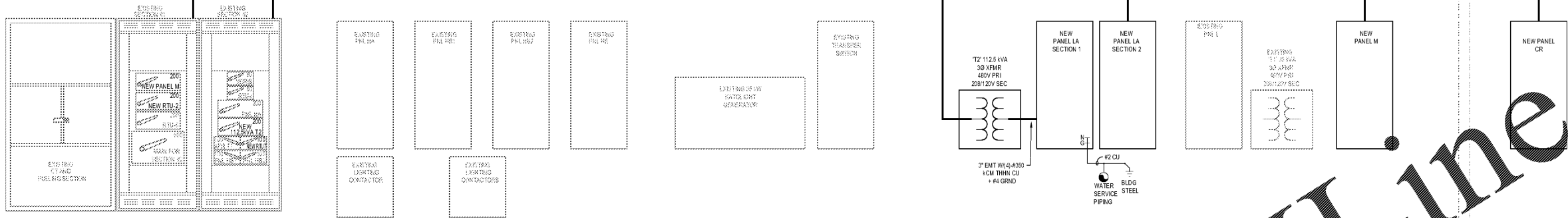
ELECTRICAL ROOM

FRONT STORAGE ROOM

2" EMT W(3)-#10 THHN CU + #4 GRND

2" EMT W(3)-#10 THHN CU + #4 GRND

2" EMT W(4)-#10 THHN CU + #4 GRND



**1** SINGLE LINE DIAGRAM 277/480V-3PH-4W SN  
SCALE NONE

THIS IS A RULER PLATE SAMPLE FOR EMT AND WIRE REQUIRED TO CONTACT AND COORDINATE WITH THE EMS PROVIDER

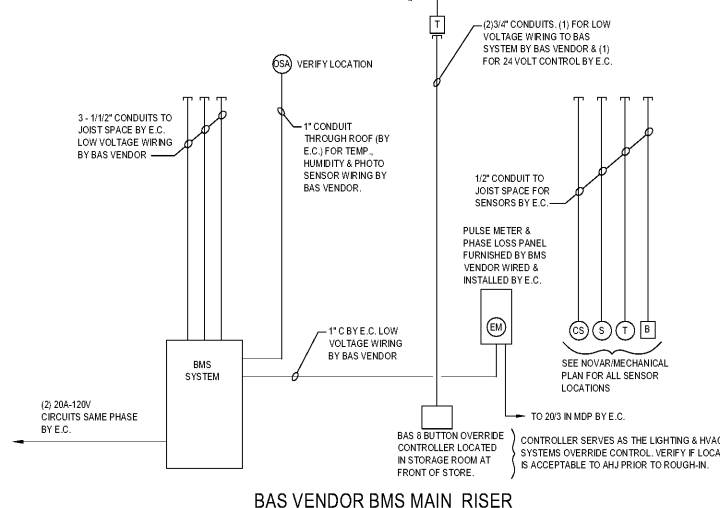
ALL CONDUIT, BOXES AND LINE VOLTAGE WIRING SHALL BE PROVIDED AND INSTALLED BY ELECTRICAL CONTRACTOR, BAS EQUIPMENT & LOW VOLTAGE WIRING IS PROVIDED AND INSTALLED INCLUDING ALL TERMINATIONS BY BAS VENDOR UNLESS OTHERWISE NOTED. LIGHTING / DIMMING CONTROL PANELS SHALL BE PURCHASED (FROM BAS VENDOR) & INSTALLED BY E.C. THE BAS VENDOR SHALL COMMISSION THE BAS SYSTEM DURING CONSTRUCTION. THE ELECTRICAL CONTRACTOR SHALL BE PRESENT DURING THE ESTIMATED 2 DAY COMMISSIONING OF THE SYSTEM & SHALL RECEIVE THE WRITTEN REPORT & CORRECT ANY DEFICIENCIES NOTED DURING THE COMMISSIONING OF THE BAS SYSTEM. E.C. SHALL REVIEW SITE SPECIFIC BAS DRAWINGS FOR EQUIPMENT LOCATIONS. COORDINATE ALL REQUIREMENTS WITH BAS VENDOR & MECHANICAL CONTRACTOR PRIOR TO BIDDING.

**LIGHTING CONTROL NOTE**  
THE EXISTING LIGHTING CONTROLS ARE CURRENTLY SET UP TO OPERATE VIA POWER CONTACTORS TO TURN ON AND OFF THE ENTIRE PANELS HA, HB1, AND HB2.  
IT IS ANTICIPATED THAT THE ABOVE LISTED PANELS AND CONTACTORS WILL REMAIN IN USE.  
VERIFY INSTALLATION AND CONNECTIONS OF EXISTING LIGHTING CONTROLS TO NEW BAS PANEL CONTROLS.

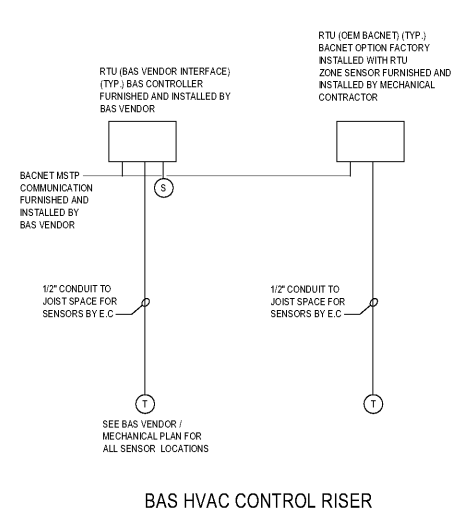
Tag	WIRE LEGEND	FB
(2) #12, #12GND-3/4"C		
(3) #12, #12GND-3/4"C		
(4) #12, #12GND-3/4"C		
(2) #10, #10GND-3/4"C		
(3) #10, #10GND-3/4"C		
(4) #10, #10GND-3/4"C		
(2) #8, #8GND-3/4"C		
(3) #8, #8GND-1"C		
(4) #8, #8GND-1"C		
(2) #6, #6GND-1"C		
(3) #6, #6GND-1"C		
(4) #6, #6GND-1"C		
(2) #4, #4GND-1"C		
(3) #4, #4GND-1 1/4" C		
(4) #4, #4GND-1 1/4" C		
(2) #2, #2GND-1 1/4" C		
(3) #2, #2GND-1 1/4" C		
(4) #2, #2GND-1 1/4" C		
(2) #1, #1GND-1 1/4" C		
(3) #1, #1GND-1 1/4" C		
(4) #1, #1GND-1 1/2" C		
(2) #1/0, #2GND-1 1/4" C		
(3) #1/0, #2GND-1 1/2" C		
(4) #1/0, #2GND-1 1/2" C		
(2) #3/0, #2GND-1 1/2" C		
(3) #3/0, #2GND-2" C		
(4) #3/0, #2GND-2" C		
(2) #4/0, #2GND-2" C		
(3) #4/0, #2GND-2" C		
(4) #4/0, #2GND-2 1/2" C		
(2) 300KCMIL, #1/0GND-2" C		
(3) 300KCMIL, #1/0GND-2 1/2" C		
(4) 300KCMIL, #1/0GND-2 1/2" C		
(2) 350KCMIL, #3/0GND-2" C		
(3) 350KCMIL, #3/0GND-2 1/2" C		
(4) 350KCMIL, #3/0GND-2 1/2" C		
(2) 500KCMIL, #3/0GND-3" C		
(3) 500KCMIL, #3/0GND-3" C		
(4) 500KCMIL, #3/0GND-3 1/2" C		
(2) 600KCMIL, #3/0GND-3 1/2" C		
(3) 600KCMIL, #3/0GND-3 1/2" C		
(4) 600KCMIL, #3/0GND-3 1/2" C		

MARK	DESCRIPTION	LOAD	VOLTAG & PHASE	PANEL	CIRCUIT	CB DISC	WIRE	NOTES
RTU-1	ROOFTOP UNIT	29 MGA	480V 3PH	M	13.5	350	10-2	1.2
RTU-2	ROOFTOP UNIT	81.5 MGA	480V 3PH	MDPA	2	500	8-3	1.2
RTU-3	ROOFTOP UNIT	29 MGA	480V 3PH	M	7.811	300	10-2	1.2
RTU-4	EXISTING ROOFTOP UNIT	29 MGA	480V 3PH	MDPA	2	300	10-2	1.2
RTU-5	EXISTING ROOFTOP UNIT	100 MGA	480V 3PH	MDPA	3	1500	10-2	1.2
RTU-6	ROOFTOP UNIT	29 MGA	480V 3PH	M	13.5	350	10-2	1.2
RTU-7	ROOFTOP UNIT	40.1 MGA	480V 3PH	MDPA	6	500	8-3	1.2
RTU-8	ROOFTOP UNIT	40.1 MGA	480V 3PH	M	8.10.12	500	10-2	1.2
RTU-9	ROOFTOP UNIT	13 MGA	480V 3PH	M	14.15.18	150	10-2	1.2
RTU-10	ROOFTOP UNIT	16 MGA	480V 3PH	M	20.22.24	300	10-2	1.2
RTU-11	ROOFTOP UNIT	29 MGA	480V 3PH	M	19.21.23	350	10-2	1.2
EF-1	EXHAUST FAN	10HP	120V 1PH	LA	33	20	10-2	1.2, 8
EF-2	EXHAUST FAN	10HP	120V 1PH	LA	50	20	10-2	1.2, 8
EF-3	EXHAUST FAN	10HP	120V 1PH	LA	66	20	10-2	1.2, 8
CUH-1	GABINET UNIT HEATER	4.0KW	277V 1PH	HBT	35	20	8-3	1.2
CUH-2	GABINET UNIT HEATER	4.0KW	277V 1PH	HBT	37	20	8-3	1.2
CUH-3	GABINET UNIT HEATER	2.0KW	277V 1PH	HBT	35	20	10-2	1.2
CUH-4	GABINET UNIT HEATER	1.5KW	120V 1PH	LA	59	20	10-2	1.2
CUH-5	GABINET UNIT HEATER	2.0KW	277V 1PH	HBT	38	20	10-2	1.2
GUH-1	EXISTING GAS UNIT HEATER	80 WATTS	120V 1PH	LA	51	20	12-2	1.2
WH-1	WATER HEATER	3.0KW	277V	HBT	31	20	10-2	1.2
PMP-1	WATER HEATER RECIRC PUMP	1/3HP	120V 1PH	LA	74	20	10-2	1.2
TR-1	TRAP RISER	-	120V 1PH	LA	20	20	10-2	1.2
CU-1	CONDENSING UNIT	16.0 MGA	208V 1PH	LA	15.77	20	10-2	1.2
FD-1	FURNACE	6.5 MGA	208V 1PH	LA	15	20	10-2	1.2, 8

**MECHANICAL & PLUMBING EQUIPMENT SCHEDULE NOTES:**  
 1. VERIFY LOAD, LOCATION AND CONNECTION REQUIREMENTS WITH MECHANICAL & PLUMBING CONTRACTOR IN THE FIELD. ADJUST CONNECTION DEVICE, MOUNTING HEIGHT, WIRE CONDUIT AND CIRCUIT BREAKER AS REQUIRED IN ORDER TO MEET ALL REQUIREMENTS. COORDINATE WITH THE EQUIPMENT INSTALLING CONTRACTOR PRIOR TO BIDDING.  
 2. PROVIDE A LOCAL NEMA 3R HEAVY DUTY NON FUSED DISCONNECT SWITCH SIZED PER EQUIPMENT NAMEPLATE DATA.  
 3. PROVIDE A LOCAL NEMA 3R HEAVY DUTY FUSED DISCONNECT SWITCH SIZED AND FUSED PER EQUIPMENT NAMEPLATE DATA.  
 4. PROVIDE A LOCAL NEMA 3R HEAVY DUTY CIRCUIT BREAKER SIZED PER EQUIPMENT NAMEPLATE DATA.  
 5. WIRE TO PROVIDE ALL WIRING AND CONDUIT WIRING AS REQUIRED.  
 6. WIRE THROUGH LIGHTING CONTROL PANELS.  
 7. MAKE ALL WIRING TESTS AT ELECTRICAL CONTRACTOR'S OFFICE PRIOR TO INSTALLATION.



BAS VENDOR BMS MAIN RISER



BAS HVAC CONTROL RISER

PETER M. HONEYFORD  
 PROFESSIONAL ENGINEER  
 VA BUSINESS ENTITY PERMIT NO. 427056483  
 VA LICENSE NUMBER 420226541  
 EXP: 11/30/2019



Date: William J Fearon AIA  
 VA 017851

**Burlington**  
 BURLINGTON STORES, INC.  
 1830 ROUTE 130 NORTH  
 BURLINGTON, NEW JERSEY  
 08016

MECHANICAL IMPROVEMENT FOR  
 MANASSAS, VA  
 STORE #188

SUDLEY TOWN PLAZA  
 7685 SUDLEY ROAD  
 MANASSAS, VA 20109

DISTRIBUTION: PERMIT SUBMISSION DATE: 02-22-2018

PROJECT INFO:  
 PROJECT NUMBER: 9333.10  
 DRAWN: PPW CHECKED: JMD  
 NOTE & COPYRIGHT:  
 CONTRACTOR SHALL VERIFY ALL FIELD CONDITIONS AND CORRELATE DIMENSIONS PRIOR TO PROVIDING THE WORK. NOTIFY THE ARCHITECT OF ANY DISCREPANCIES. UNAUTHORIZED REPRODUCTION OR OTHER USE OF THIS DRAWING IS PROHIBITED.

DRAWING NAME & TITLE:  
 SINGLE LINE DIAGRAM  
 CONTACTOR PANELS & NOTES  
 E4.0