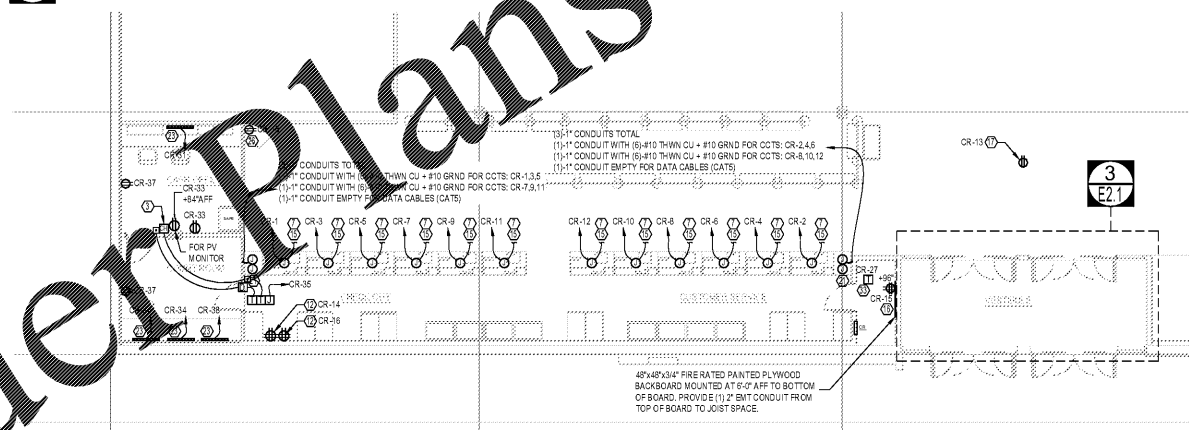
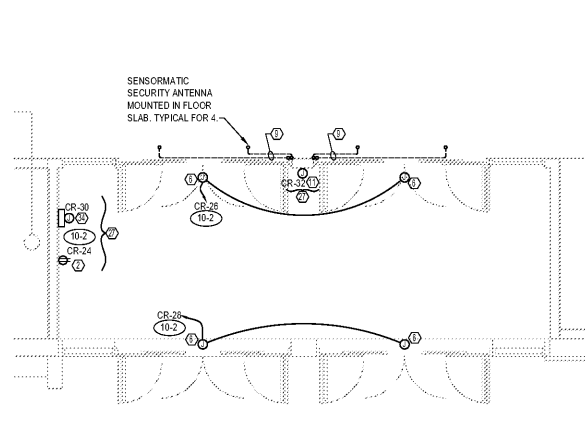


1 ENLARGED POWER PLAN - SUPPORT ROOMS
SCALE: 1/4" = 1'-0"



2 ENLARGED POWER PLAN - ENTRANCE VESTIBULE / CASH WRAP
SCALE: 1/8" = 1'-0"



4 ENLARGED POWER PLAN - ENTRANCE
SCALE: 1/4" = 1'-0"

POWER PLAN KEY NOTES (#)

1. AUTOMATIC FLUSH OR WATER FLOW SENSOR. PROVIDE ALL RECEPTACLES, JUNCTION BOXES, TRANSFORMERS, CONDUIT AND WIRING REQUIRED TO PROVIDE A COMPLETE OPERATIONAL SYSTEM. COORDINATE EXACT ROUGH-IN REQUIREMENTS WITH PLUMBING CONTRACTOR PRIOR TO ROUGH-IN.
2. 120V POWER ABOVE VESTIBULE CEILING FOR PEOPLE COUNTER. VERIFY LOCATION WITH BCF PRIOR TO ROUGH-IN.
3. REFER TO "CASH ROOM DOOR RELEASE WIRING DIAGRAM" ON E3.0.
4. NOT USED.
5. (1) 3/4"x 8'-0" 4'-0" PLYWOOD BACKBOARD. PAINT ALL SIDES WITH GRAY FIRE RETARDANT PAINT.
6. AUTO DOOR OPENERS - COORDINATE LOCATIONS AND INSTALLATION REQUIREMENTS WITH PRODUCT LITERATURE AND INSTRUCTIONS.
7. CASHWRAP SEE DETAILS SHEET E3.0 FOR ROUGH-IN REQUIREMENTS.
8. NOTE NOT USED.
9. 3/4" CONDUIT FOR ANTENNA WIRE RUN BELOW SLAB INTO WALL CAVITY. STUB TO SENSORMATIC CONTROLLER MOUNTED ABOVE VESTIBULE CEILING.
10. TELEVISION RECEPTACLE MOUNTED ON WALL 18" BELOW CEILING - VERIFY EXACT LOCATION WITH BCF PRIOR TO INSTALLATION.
11. PROVIDE 120 VOLT POWER ABOVE VESTIBULE CEILING FOR SENSORMATIC CONTROLLER. COORDINATE ALL POWER, CONTROL & CONDUIT ROUGH-IN REQUIREMENTS WITH SENSORMATIC PRIOR TO INSTALLATION.
12. SEASONAL W/WRAP RECEPTACLE MOUNTED ABOVE CASHWRAP FURNITURE FILLER PANEL. VERIFY EXACT LOCATION WITH PROJECT MANAGER PRIOR TO INSTALLATION.
13. NOTE NOT USED.
14. E.C. SHALL COORDINATE WITH BAS VENDOR FOR ENERGY MANAGEMENT SYSTEM INSTALLATION REQUIREMENTS. E.C. SHALL BE RESPONSIBLE FOR ALL 120 VOLT POWER, CONDUITS AND BOXES AS WELL AS THE INSTALLATION OF THE SYSTEM.
15. CASHWRAP FURNITURE, E.C. SHALL INSTALL (3) QUAD RECEPTACLES, CONDUIT & WIRE INSIDE THE FURNITURE. CONTROL OUTLET JUNCTION BOX INSTALLED ON FLOOR BELOW ACCESS PANEL OF FURNITURE. CIRCUIT AS SHOWN. SEE DETAIL E23.0 FOR LOCATION OF OUTLETS. RUN ALL CONDUITS WITHIN 1" ON FLOOR IN TOE SPACE OF FURNITURE.
16. PROVIDE 1/2" PLYWOOD BACK BOARD SO BOTTOM IS AT 72" A.F.F. PAINT SAME COLOR AS COMMUNICATIONS RACK.
17. JUNIOR RECEPTACLE. VERIFY EXACT LOCATION PRIOR TO ROUGH IN.
18. ELECTRICAL CONTRACTOR TO PROVIDE 3/4" CONDUIT WITH PULL STRING FROM CEILING SPACE ABOVE VESTIBULE ACCESS PANEL INTO CANOPY SPACE FOR OUTDOOR CAMERA. COORDINATE EXACT LOCATION OF CAMERA LOCATION WITH BURLINGTON LOSS PREVENTION DEPARTMENT PRIOR TO INSTALLATION.
19. PROVIDE 120 VOLT POWER ON WALL AT +98" AFF FOR SENSORMATIC CONTROLLER. COORDINATE ALL POWER, CONTROL & CONDUIT ROUGH-IN REQUIREMENTS WITH SENSORMATIC PRIOR TO INSTALLATION.
20. FLOOR SCRUBBER RECEPTACLE. VERIFY EXACT LOCATION WITH BCF PROJECT MANAGER IN FIELD PRIOR TO ROUGH-IN.
21. ELECTRICAL CONTRACTOR TO STUB (2) 1 1/4" EMT CONDUITS (FOR DATA CABLE) FROM 2' AFF UP WALL CAVITY TO JOIST SPACE. PROVIDE BUSHINGS AT EACH END & PULLWIRE. COORDINATE WITH G.C. & REMOVE FLOOR TRACK & 3" OF DRYWALL AT CABINET MOUSE HOLE. ENLARGE CABINET MOUSEHOLE TO ACCOMMODATE POWER & DATA WIRING.
22. JUNCTION BOX FOR HAND DRYER. MOUNT JUNCTION BOX AT 42" AFF. E.C. TO WIRE AND INSTALL G.C. TO PROVIDE HAND DRYER IS XLERATOR 60L-SB-12.
23. 3/8" N LENGTH PLUGMOLD MOUNTED 6" ABOVE COUNTER. PLUG MOLD SHALL HAVE RECEPTACLES INSTALLED 9" ON CENTER & BE HARDWIRED. E.C. SHALL PROVIDE WIRE & INSTALL COMPLETE PLUGMOLD SYSTEM. LEGRAND #WH-20-GB-3-35-HARDWIRED.
24. 7/8" N LENGTH PLUGMOLD MOUNTED 6" ABOVE COUNTER. PLUG MOLD SHALL HAVE RECEPTACLES INSTALLED 9" ON CENTER & BE HARDWIRED. E.C. SHALL PROVIDE WIRE & INSTALL COMPLETE PLUGMOLD SYSTEM. LEGRAND #WH-20-GB-6-03-HARDWIRED.
25. DEDICATED RECEPTACLE FOR LOSS PREVENTION SERVER. MOUNT RECEPTACLE AT HEIGHT OF SERVER RACK. COORDINATE EXACT LOCATION WITH LOSS PREVENTION VENDOR PRIOR TO ROUGH-IN.
26. WALL MOUNTED RECEPTACLE FOR COKE MACHINE.
27. OUTLETS AND CONTROL PANELS INSTALLED ABOVE HARD CEILING NEAR ACCESS PANEL. VERIFY EXACT LOCATION PRIOR TO ROUGH IN.
28. PROVIDE SINGLE GANG JUNCTION BOX AT 48" AFF WITH 3/4" C STUBBED ABOVE VESTIBULE CEILING FOR CONTROL PANEL.
29. (2) 4" C TO PROPERTY LINE FOR TELEPHONE UTILITY DEMARK. COORDINATE REQUIREMENTS WITH LOCAL UTILITY COMPANY.
30. 4"x8"x3/4" FIRE RATED PLYWOOD BACKBOARD. INSTALL A #4 AWG COPPER BONDING JUMPER FROM BACKBOARD TO GROUNDING ELECTRODE SYSTEM COIL 9" OF THE JUMPER ABOVE CENTER OF BACKBOARD FOR TELEPHONE UTILITY USE.
31. DEDICATED RECEPTACLE FOR POSSIBLE HIGH SPEED INTERNET CONNECTION EQUIPMENT.
32. 1 1/4" C WITH PULL WIRE TO TELE DEMARK FOR HIGH SPEED INTERNET CONNECTION CABLE.
33. SINGLE GANG JUNCTION BOX AT 48" AFF WITH (2) 3/4" CONDUITS STUBBED ABOVE CEILING FOR BAS SYSTEM OVERRIDE CONTROLLER. COORDINATE EXACT LOCATION WITH AHI PROVIDE EDWARDS #98 TRANSFORMER ABOVE CEILING FOR 24 VOLT POWER TO CONTROLLER.
34. PROVIDE 120V POWER TO CART LOCK CONTROL SYSTEM ABOVE THE CEILING. COORDINATE ALL REQUIREMENTS WITH CART LOCK SYSTEM CONTROLLER MANUFACTURER PRIOR TO INSTALLATION.
35. NOT USED.

GENERAL POWER NOTES

1. 20A 120V CIRCUITS LONGER THAN 100' TOTAL (TO THE DEVICE THERE AND BACK TO THE SOURCE) SHALL BE (E2-2).
2. ELECTRICAL / COMMUNICATION DEVICES SHALL BE WHITE WITH WHITE COVER PLATE.

- UNDERFLOOR CONDUITS AND CONDUCTORS:**
- INSTALL EMT CONDUITS OVERHEAD FROM ELECTRICAL ROOM TO COLUMN AS SHOWN ABOVE.
 - INSTALL EMT CONDUITS DOWN THE FACE OF THE INDICATED COLUMN.
 - WITHIN 6" OF THE FLOOR MAKE TRANSITION TO SCHEDULE 40 PVC CONDUIT. REMAINDER OF UNDER FLOOR CONDUITS MAY BE SCHEDULE 40 PVC.
 - WHERE REQUIRED, SAWCUT FLOOR UNDER GROUND CONDUITS SHALL BE LOCATED COMPLETELY UNDER POUR OF NEW CONCRETE.

PETER M. HONEYFORD
PROFESSIONAL ENGINEER
VA BUSINESS ENTITY PERMIT NO. 4277056483
VA LICENSE NUMBER 420228541
EXP-11/30/2019



601 Chapel Avenue East
 Cherry Hill, New Jersey 08034
 P 856.428.8877
 F 856.429.6379
 W ignarrilummis.com

Date: _____
 William J Fearon AIA
 VA 017851

CLIENT & PROJECT

Burlington

BURLINGTON STORES, INC.

1830 ROUTE 130 NORTH
 BURLINGTON, NEW JERSEY
 08016

TENANT IMPROVEMENT FOR
 MANASSAS, VA
 STORE #188

SUDLEY TOWN PLAZA
 7685 SUDLEY ROAD
 MANASSAS, VA 20109

DISTRIBUTION: _____ **DATE:** _____

PERMIT SUBMISSION	02-22-2018

PROJECT INFO:

PROJECT NUMBER: 9333.10

DRAWN: PPW	CHECKED: JMD
------------	--------------

NOTE & COPYRIGHT:

CONTRACTOR SHALL VERIFY EXISTING CONDITIONS AND CORRELATE DIMENSIONS PRIOR TO PROVIDING THE WORK DETAILED IN THESE DRAWINGS AND SHALL PROMPTLY NOTIFY THE ARCHITECT OF ANY DISCREPANCIES. UNAUTHORIZED REPRODUCTION OR OTHER USE OF THIS DRAWING IS PROHIBITED.

DRAWING NAME & TITLE:

ENLARGED POWER PLANS

E2.1

Order Plans @

WWW.LDLINE.COM