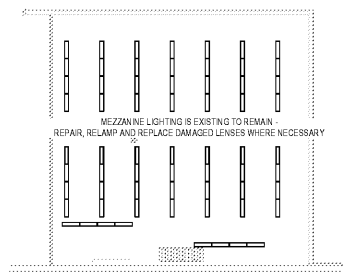
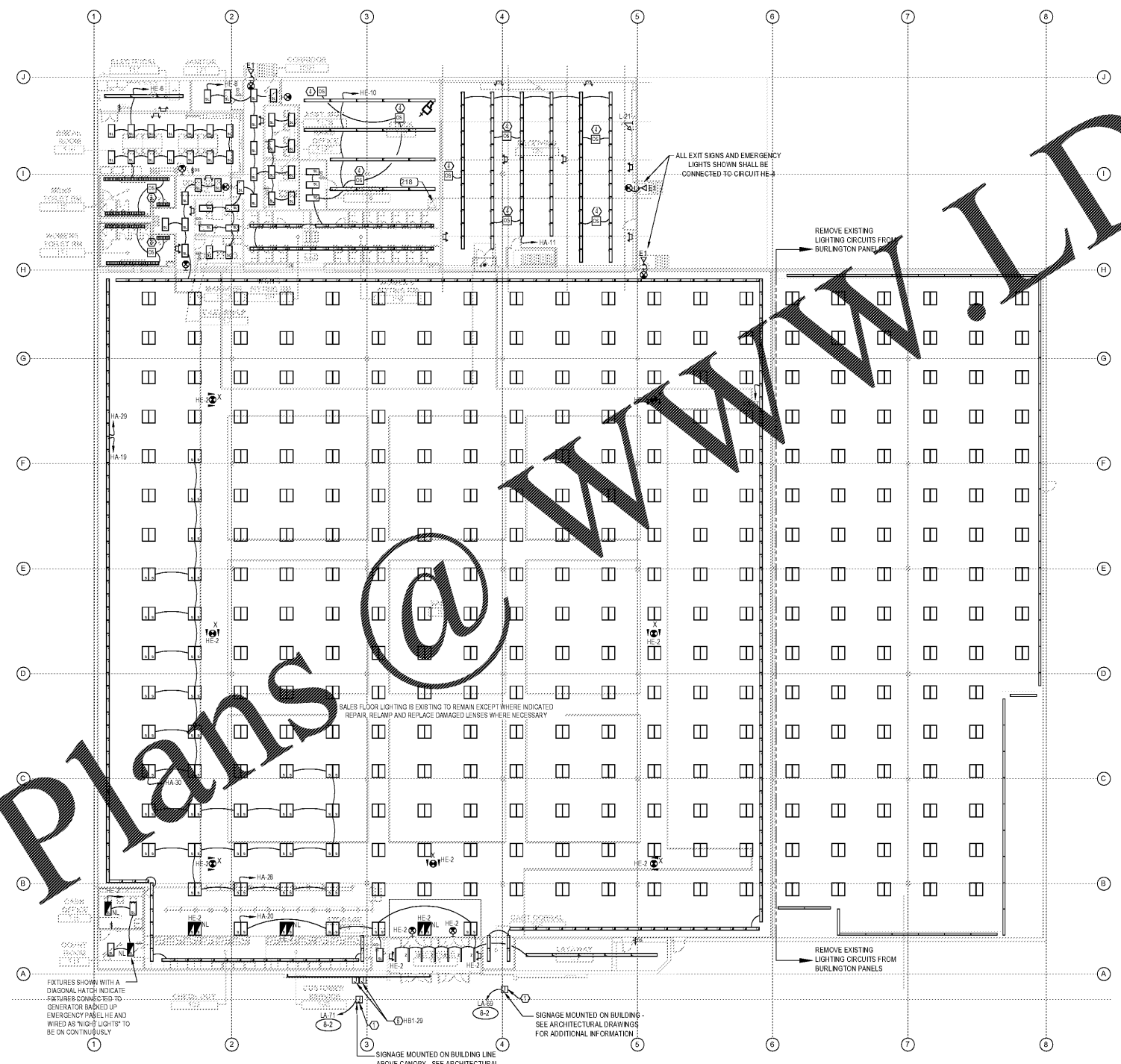


Order Plans @



2 MEZZANINE LIGHTING PLAN
SCALE: 1/16" = 1'-0"



1 LIGHTING PLAN
SCALE: 1/16" = 1'-0"

EMERGENCY AND NIGHT LIGHT NOTES 'EM'

- WHEN EMERGENCY LIGHTING FIXTURES ARE SHOWN THEY SHALL BE WIRED TO THE CIRCUIT NUMBER AS INDICATED. FURNISH AND INSTALL HANDLE LOCK ON CIRCUIT BREAKERS. EXIT SIGNS & NIGHT LIGHT CIRCUITS SHALL BYPASS ALL CONTROL. EM FIXTURES CONNECTED TO LOCAL LIGHTING CIRCUITS WITHOUT A 'N' DESIGNATION SHALL BE CONTROLLED WITH LOCAL FIXTURES, AN EXTRA HOT CONDUCTOR OF THE SAME CIRCUIT SHALL BE INSTALLED TO BYPASS CONTROL, FROM LOCAL SWITCHES, OCCUPANCY SENSORS OR LIGHTING CONTACTORS. SEE DETAILS ON SHEET E5.9.

GENERAL LIGHTING NOTES

- COORDINATE LOCATIONS OF ALL LIGHTING FIXTURES AND CEILING MOUNTED DEVICES WITH THE ARCHITECTURAL REFLECTED CEILING PLANS.
- REFER TO DRAWING E5 FOR NOTES, SCHEDULES, AND SYMBOL LEGENDS.
- ROWS OF FIXTURES SHALL BE CONTROLLED ALTERNATELY AND WIRED TO SEPARATE PANELS, CONTACTORS OR LIGHTING RELAY PANELS FOR 5000 LIGHT LEVEL DISTRIBUTION. SEE ARCHITECTURAL DRAWINGS A1.6 FOR LIGHT FIXTURE MOUNTING AND INSTALLATION DETAILS.
- ALL 277 VOLT INTERIOR LIGHT FIXTURES SHALL BE CONNECTED WITH (B-2) OR (B-3)
- ALL EXTERIOR WALL MOUNTED FIXTURES SHALL BE CONNECTED WITH (E-2)

LIGHTING PLAN KEY NOTES (#)

- FURNISH AND INSTALL POWER WIRING TO EXTERIOR FIXTURES. UTILIZE CIRCUITS INDICATED. MOUNT JUNCTION BOXES ACCORDING TO SIGN MANUFACTURER'S INSTRUCTIONS WITHIN 6" OF SIGN TOP SURFACE. ROUTE POWER THROUGH THE LIGHTING CONTROL SYSTEM. SEE DRAWING E-4.0 FOR ADDITIONAL LIGHTING CONTROL SYSTEMS. BE INVADED BY THE BUILDING EMS. VERIFY WITH SIGN CONTRACTOR ALL FINISH, LOCK AND MOUNTING SLOUGH IN.
- PROVIDE A 4" ALUMINUM GANG WITH 3/4" CONDUIT STUB TO ABOVE FOR EMS SCREEN CONTROLLER.
- FIXTURES LOCATED IN WALL CEILING SHALL BE PROVIDED WITH A FLANGE TRIM KIT.
- SEE OCCUPANCY SENSORS CONTROL DETAIL ON DRAWING E5.0 FOR WIRING DETAILS.
- MOUNT REMOTE TEST SWITCH FLUSH IN VESTIBULE.
- JUNCTION BOX FOR DECORATIVE LED STRIP LIGHTING. ELECTRICAL CONTRACTOR SHALL PURCHASE AND INSTALL LED LIGHTING. WINDOW LIGHTING #W5L207W. SEE ARCHITECTURAL ELEVATIONS ON SHEET A1 FOR EXACT LENGTH OF LIGHTING. ELECTRICAL CONTRACTOR SHALL PROVIDE ALL COMPONENTS TO MAKE A FULLY OPERATIONAL SYSTEM.

EXISTING LIGHT FIXTURE NOTES

- CLEAN AND REPAIR ALL EXISTING TO REMAIN SALES FLOOR LIGHTING FIXTURES.
- REPLACE ALL BROKEN LENSES WITH NEW.
- REPLACE ALL LAMPS WITH NEW.

Ignarri Lummis ARCHITECTS
601 Chapel Avenue East
Cherry Hill, New Jersey 08004
P 856.428.8877
F 856.429.6379
W ignarrilummis.com

Date: William J Fearon AIA
VA 017851
CLIENT & PROJECT

Burlington
BURLINGTON STORES, INC.
1830 ROUTE 130 NORTH
BURLINGTON, NEW JERSEY
08016

TENANT IMPROVEMENT FOR
MANASSAS, VA
STORE #188
SUDLEY TOWN PLAZA
7685 SUDLEY ROAD
MANASSAS, VA 20109

DISTRIBUTION:	DATE:
PERMIT SUBMISSION	02-22-2018

PROJECT INFO:
PROJECT NUMBER: 9333.10
DRAWN: JMD
CHECKED: JMD
NOTE & COPYRIGHT:
CONTRACTOR SHALL VERIFY EXISTING CONDITIONS AND CORRELATE DIMENSIONS PRIOR TO PROVIDING THE WORK DETAILED IN THESE DRAWINGS AND SHALL PROMPTLY NOTIFY THE ARCHITECT OF ANY DISCREPANCIES. UNAUTHORIZED REPRODUCTION OR OTHER USE OF THIS DRAWING IS PROHIBITED.

DRAWING NAME & TITLE:
LIGHTING PLAN
E1.0

PETER M. HONEYFORD
PROFESSIONAL ENGINEER
VA BUSINESS ENTITY PERMIT NO. 427705483
VA LICENSE NUMBER 402228541
EXP. 11/30/2019

PMH ASSOCIATES, INC.
PROFESSIONAL ELECTRICAL, THE PROFESSIONAL STRUCTURAL ENGINEERING
1271 W. GARDNER ST. STE. E. WOODBRIDGE, NJ 07095
800.225.1144 / 908.675.1731 / 908.675.1144
3375 FORK LANE, SUITE 101B, COLUMBUS, GA 31906
478.464.4144 / 478.464.1144 / 478.464.1144