

SYMBOL LEGEND	
SYMBOL	DESCRIPTION
###	CODED NOTE (SEE SPECIFIC SHEET CODED NOTES)
X	FIXTURE / ACCESSORY (SEE TOILET ROOM SCHEDULE)
XXX	FINISH TAG (SEE FINISH SCHEDULE ON SHEET A4.0)

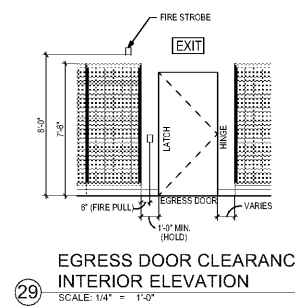
GC TO PROVIDE INTERIOR SIGNAGE PER LOCAL CODE REQUIREMENTS. GC TO CONFIRM FINAL SIGNAGE REQUIREMENTS AND VERIFY FINAL ORDER WITH BURLINGTON PM.

INTERIOR ELEVATIONS CODED NOTES

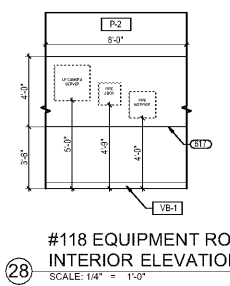
- 600. STANLEY DURA GLIDE 3000 SERIES AUTOMATIC SLIDING DOORS. COLOR TO BE CLEAR ANODIZED. SEE DOOR SCHEDULE ON A4.0 FOR MORE DETAIL.
- 601. GF DUPLEX RECEPTACLE. SEE ELECTRICAL DRAWINGS FOR DETAILS (COLOR TO BE WHITE).
- 602. 3/8" DEEP PLASTIC LAMINATE COUNTERTOP (TRIM TO FIT) SUPPORTED BY LAMINATED BRACKET. SEE DETAIL 8 & 7A4.1.
- 603. SEASONAL CASH WRAPS TO RECEIVE POWER AND DATA OFF-WALL LOCATION @ 24" A.F.F. SEE ELECTRICAL DRAWINGS FOR MORE DETAIL. G.C. TO CONFIRM FINAL PLACEMENT WITH BURLINGTON PROJECT MANAGER & ARCHITECT PRIOR TO INSTALLATION OF MATERIALS.
- 604. COUNTER BRACKET SPACED EQUALLY (NOT TO EXCEED @ 2'-0" O.C.). INSTALL FULL HEIGHT BRACKET IN CENTER WHEN COUNTERS EXCEED 10'-0" IN LENGTH, IN COUNT ROOM WHERE COUNTER CHANGES HEIGHT, OR IF COUNTER DOES NOT END AT WALL. SEE DETAIL 6 & 7A4.1.
- 605. METAL SHELF STANDARDS & BRACKETS (COLOR: WHITE).
- 606. 12" DEEP PLASTIC LAMINATE SHELVING ABOVE COUNTER. (COLOR: WHITE).
- 607. PLUGMOLD POWER STRIP MOUNTED 6" ABOVE COUNTER TOP WORKING SURFACE (COLOR: WHITE). SEE ELECTRICAL DRAWINGS FOR DETAILS.
- 608. PROVIDE HORIZONTAL WOOD BLOCKING BEHIND GYP. BD. FOR ALL WALL BRACKETS & COUNTERS.
- 609. INSTALL CORNER GUARDS (CG-1) ON ALL GYPSUM BOARD OUTSIDE CORNERS IN SALES & OFFICE AREAS.
- 610. NOT USED.
- 611. EMPLOYEE LOCKERS. SEE ACCESSIBILITY DETAILS ON A0.3 FOR MORE DETAIL.
- 612. EMPLOYEE Fridge / Freezer. SEE ELECTRICAL SHEETS FOR MORE DETAIL.
- 613. EMPLOYEE VENDING MACHINE. SEE ELECTRICAL SHEETS FOR MORE DETAIL.
- 614. TV & MOUNTING BRACKET MOUNTED 2'-6" BELOW FINISHED CEILING. PROVIDE WOOD BLOCKING BEHIND WALLS AS REQUIRED FOR TV MOUNT. SEE ELECTRICAL SCHEDULE ON SHEET A1.1.
- 615. 72" WIDE X 8' HIGH BULLETIN BOARD IN BREAK ROOM. PROVIDE 1/4" T. PLYWOOD PANEL PER ELECTRICAL DRAWINGS.
- 616. PHONE EQUIPMENT MOUNTED ON 8' X 4' X 3/4" T. PLYWOOD PANEL PER ELECTRICAL DRAWINGS.
- 617. CIRCULAR ALARM PANEL MOUNTED ON 8' X 4' X 3/4" T. PLYWOOD PANEL PER ELECTRICAL DRAWINGS.
- 618. CASH WRAPS TO RECEIVE POWER AND DATA. CONFIRM FINAL PLACEMENT WITH BURLINGTON PROJECT MANAGER & ARCHITECT PRIOR TO INSTALLATION OF MATERIALS. ALUMINUM CASH WRAPS & CUSTOMER SERVICE COUNTERS TO BE ACCORDANCE TO E3.0 & E3.0 FOR CASH WRAP & CUSTOMER SERVICE COUNTER DETAILS.
- 619. SENSOMATIC DOOR MAX PEDESTAL LOSS PREVENTION SYSTEM. SEE ELECTRICAL DRAWINGS FOR MORE DETAIL. GC TO PROVIDE MOUNTING POST OR SENSOR MOUNTING PEDESTAL. SEE RESPONSIBILITY SCHEDULE ON A0.2 FOR CONTACT INFORMATION.
- 620. CART CORRAL. PAINT WALL BEHIND CART CORRAL ACCENT RED P-3. CONFIRM EXTENTS WITH BURLINGTON PM.
- 621. NOT USED.
- 622. NOT USED.
- 623. 2'-0" X 5'-0" MIRROR @ 1'-0" A.F.F. USE CLEAR SILICONE CAULK AROUND ALL EDGES.
- 624. PROVIDE 10" WIDE 20 GA SHEET METAL BEHIND GYP. BD. FOR ANCHORING FITTING ROOM MIRRORS & ACCESSORIES.
- 625. FITTING ROOM BENCH.
- 626. LEVEL 5 WALL FINISH REQUIRED THROUGHOUT ENTIRE TENANT SPACE. SEE FINISH SCHEDULE ON A4.0 FOR LEVEL DEFINITIONS.
- 627. PERIMETER LIGHT FIXTURES.
- 628. BREAK ROOM COUNTER W/ SINK. SEE DETAIL 8 ON A4.1 AND PLUMBING SHEETS FOR MORE DETAIL.
- 629. ACCENT WALL TO BE PAINTED P-3 TO 14'-0" A.F.F. @ SALES AREA AND @ FITTING ROOM SALES WALL. PAINT TO UNDERSIDE OF CEILING IN BREAKROOM, LAYAWAY, E-LEARNING, AND FITTING ROOM. SEE FINISH SCHEDULE ON A4.0 FOR MORE DETAIL.
- 630. PROVIDE GYPSUM BOARD CONTROL JOINTS AT BOTH EDGES ABOVE ALL BULKHEADS AND DOOR OPENINGS ON SALES FLOOR. SEE DETAIL 3A4.1 FOR MORE INFORMATION.
- 631. B.A.S. EQUIPMENT MOUNTED ON 4' X 8' X 3/4" T. PLYWOOD PANEL PER ELECTRICAL DRAWINGS.
- 632. 48" WIDE X 38" HIGH BULLETIN BOARDS.
- 633. 22" X 28" SNAP-FRAME GRAPHICS FURNISHED BY BURLINGTON.
- 634. CART CORRAL CB-FIXED BUMPER. GC TO INSTALL PER MANUFACTURER'S SPECIFICATIONS.
- 635. MICROWAVE CABINET. SEE DETAIL 8 ON A4.1 FOR MORE INFORMATION.
- 636. VINYL WALL COVERING BY ASTEK WALLCOVERING. SEE FINISH SCHEDULE ON SHEET A4.0 FOR MORE INFORMATION.

INTERIOR ELEVATIONS GENERAL NOTES

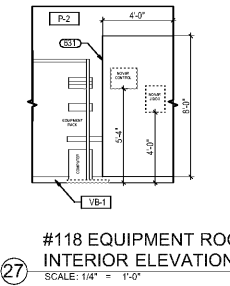
1. DO NOT SCALE DRAWING
2. DIMENSIONS ARE FROM FACE OF FINISHED WALL TO FACE OF FINISHED WALL UNLESS NOTED OTHERWISE. (U.N.O.)
3. SEE SCHEDULE AND DETAILS ON SHEET A4.0 FOR PARTITION TYPES, ROOM SCHEDULE, FINISH SCHEDULE, DOOR SCHEDULE, AND DOOR TYPES.
4. IT IS THE RESPONSIBILITY OF THE GENERAL CONTRACTOR TO CROSS-CHECK THE M.E.P. DRAWINGS WITH THE ARCHITECTURAL DRAWING PRIOR TO THE ORDERING / INSTALLATION OF MECHANICAL, ELECTRICAL AND PLUMBING WORK. ANY DISCREPANCIES BETWEEN THE ARCHITECTURAL AND M.E.P. DRAWINGS SHALL BE BROUGHT TO THE ARCHITECT'S ATTENTION FOR IMMEDIATE CLARIFICATION.
5. ALL CONSTRUCTION SHALL COMPLY WITH ALL APPLICABLE STATE, CITY AND LOCAL CODES AND ORDINANCES AT THE LOCATION OF THE PROJECT.
6. WHERE EXISTING CONDITIONS ARE CUT OR DISTURBED TO PERMIT INSTALLATION OF NEW WORK, MATCH AND PATCH EXISTING DISTURBED CONSTRUCTION TO ORIGINAL CONDITION.
7. CONTRACTOR TO VERIFY ALL PLYWOOD REQUIRED FOR ELECTRICAL EQUIPMENT WITH ELECTRICAL SHEETS. INSTALL PLYWOOD AS DIRECTED ON ELECTRICAL SHEETS.
8. DIMENSIONS AND CONDITIONS SHALL BE VERIFIED IN THE FIELD BY THE GENERAL CONTRACTOR (G.C.) PRIOR TO CONSTRUCTION OR ORDER OF MATERIALS. ANY REVISIONS, CHANGES, DEVIATIONS OR INCONSISTENCIES BETWEEN THE AS-BUILT CONDITIONS AND THESE DRAWINGS SHALL IMMEDIATELY BE REPORTED TO THE OWNER BEFORE CONSTRUCTION.
9. INSTALL CORNER GUARDS ON ALL GYPSUM BOARD CORNERS THROUGHOUT ENTIRE BURLINGTON SPACE. CG-1 TO BE INSTALLED IN SALES, OFFICE & RESTROOM CORRIDOR AREAS. CG-2 TO BE INSTALLED IN STOCK AREAS.
10. SEE SHEET A1.3 FOR MORE DETAIL ON DOOR TAG CALLOUTS.
11. SEE A0.3 FOR ALL ACCESSIBLE DETAILS.
12. CONFIRM LOCATIONS OF EQUIPMENT AND PLYWOOD IN EQUIPMENT ROOM WITH BURLINGTON PROJECT MANAGER PRIOR TO INSTALLATION.
13. WALL SHELVING TO BE CENTERED OVER COUNTERS, U.N.O.



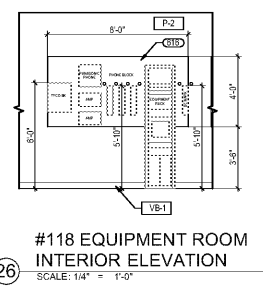
#19 EGRESS DOOR CLEARANCE INTERIOR ELEVATION
SCALE: 1/4" = 1'-0"



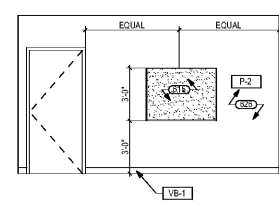
#118 EQUIPMENT ROOM INTERIOR ELEVATION
SCALE: 1/4" = 1'-0"



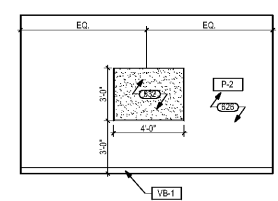
#118 EQUIPMENT ROOM INTERIOR ELEVATION
SCALE: 1/4" = 1'-0"



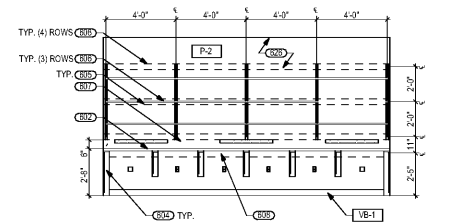
#118 EQUIPMENT ROOM INTERIOR ELEVATION
SCALE: 1/4" = 1'-0"



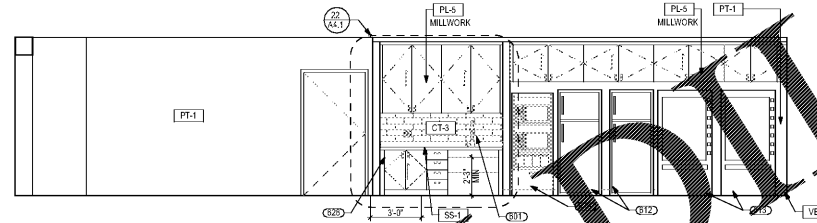
#112C REG. HR MANAGER INTERIOR ELEVATION
SCALE: 1/4" = 1'-0"



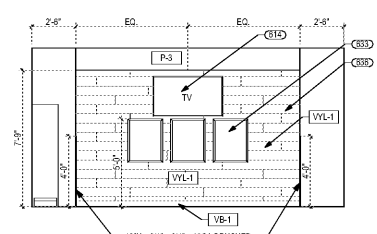
#112A MANAGER INTERIOR ELEVATION
SCALE: 1/4" = 1'-0"



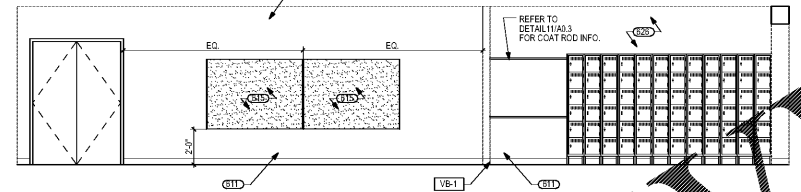
#112B ASST. MANAGER INTERIOR ELEVATION
SCALE: 1/4" = 1'-0"



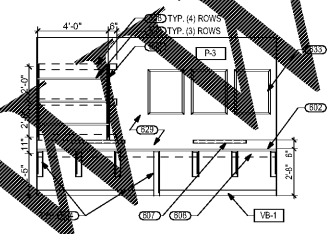
#116 BREAK ROOM INTERIOR ELEVATION
SCALE: 1/4" = 1'-0"



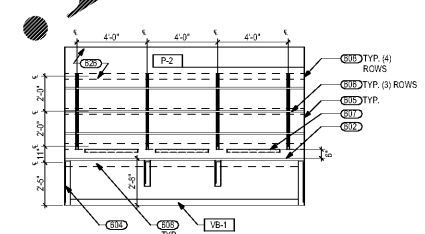
#116 BREAK ROOM INTERIOR ELEVATION
SCALE: 1/4" = 1'-0"



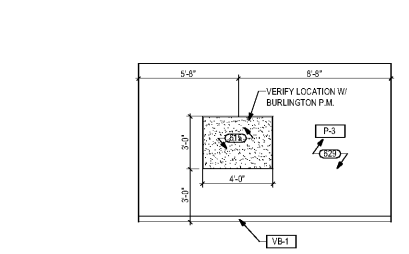
#116 BREAK ROOM INTERIOR ELEVATION
SCALE: 1/4" = 1'-0"



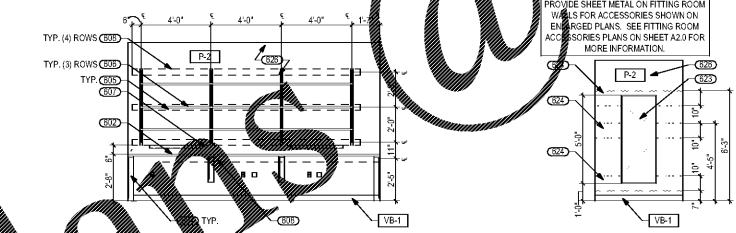
#114 COUNT ROOM INTERIOR ELEVATION
SCALE: 1/4" = 1'-0"



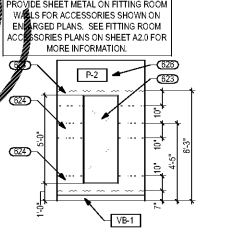
#115 CASH ROOM INTERIOR ELEVATION
SCALE: 1/4" = 1'-0"



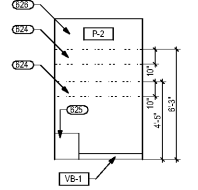
#113 E-LEARNING/ LOSS PREVENTION ELEVATION
SCALE: 1/4" = 1'-0"



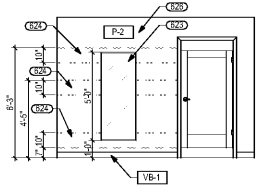
#113 E-LEARNING/ LOSS PREVENTION ELEVATION
SCALE: 1/4" = 1'-0"



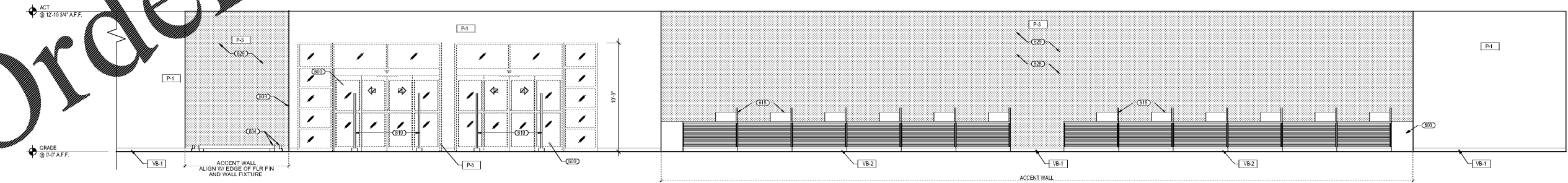
TYPICAL FITTING ROOM INTERIOR ELEVATION
SCALE: 1/4" = 1'-0"



TYPICAL FITTING ROOM INTERIOR ELEVATION
SCALE: 1/4" = 1'-0"



ADA FITTING ROOM INTERIOR ELEVATION
SCALE: 1/4" = 1'-0"



#1 FRONT OF HOUSE INTERIOR ELEVATION
SCALE: 1/4" = 1'-0"

Order Plans @

William J. Fearon
ARCHITECTS

601 Chapel Avenue East
Cherry Hill, New Jersey 08034

P 856.428.9877
F 856.428.6379
W www.williamjfearon.com

Date: 02/22/16
William J. Fearon AIA
VA 017651

CLIENT & PROJECT

Burlington
BURLINGTON STORES, INC.
1830 ROUTE 130 NORTH
BURLINGTON, NEW JERSEY
08016

INTERIOR TENANT IMPROVEMENT
FOR BURLINGTON STORES AT
MANASSAS, VA
STORE #188

SUDLEY TOWN PLAZA
7685 SUDLEY ROAD
MANASSAS, VA 20109
PRINCE WILLIAM COUNTY

DISTRIBUTION: DATE: 02/22/2016

0 PERMIT SUBMISSION

PROJECT INFO:
PROJECT NUMBER: 9333.10
DRAWN: JMD
CHECKED: JMD

NOTE & COPYRIGHT:
CONTRACTORS SHALL VERIFY EXISTING CONDITIONS AND CORRELATE DIMENSIONS PRIOR TO PROVIDING THE WORK DETAILED IN THESE DRAWINGS AND SHALL PROMPTLY NOTIFY THE ARCHITECT OF ANY DISCREPANCIES. UNAUTHORIZED REPRODUCTION OR OTHER USE OF THIS DRAWING IS PROHIBITED.

DRAWING NAME & TITLE:
INTERIOR ELEVATIONS

A3.0