

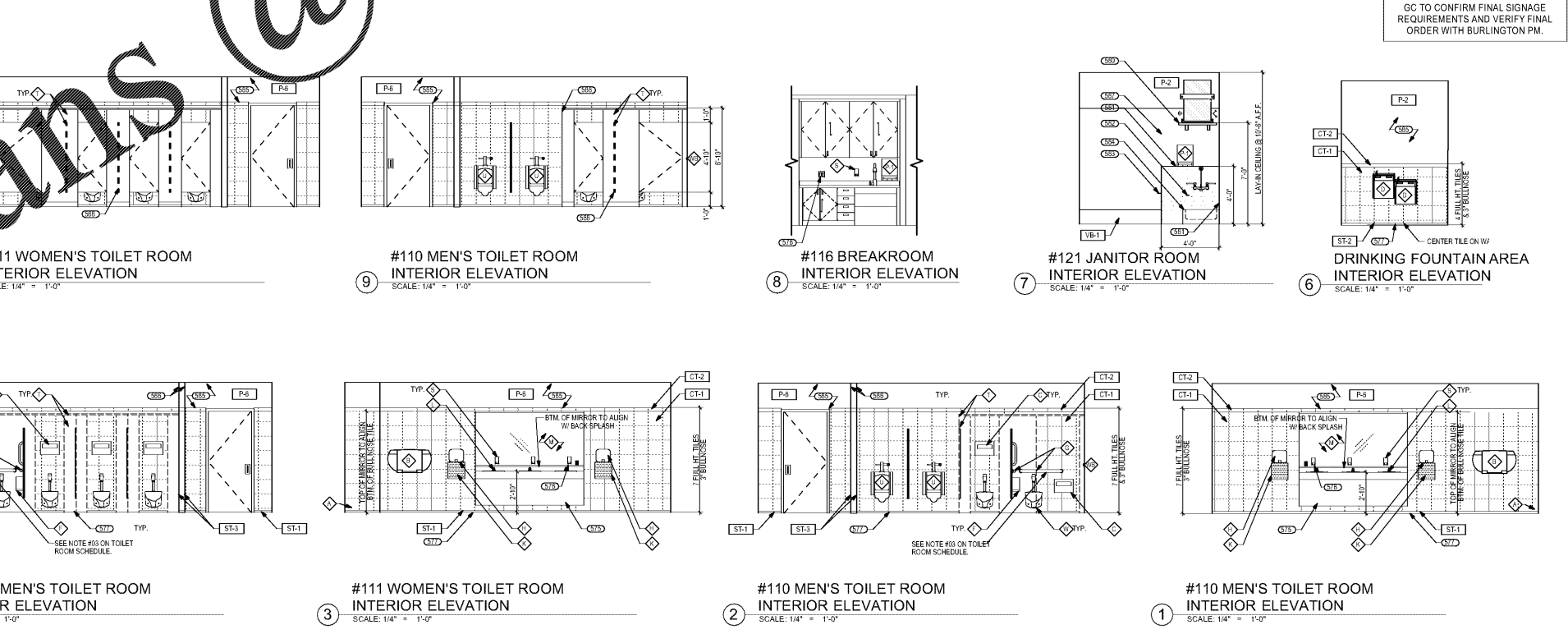
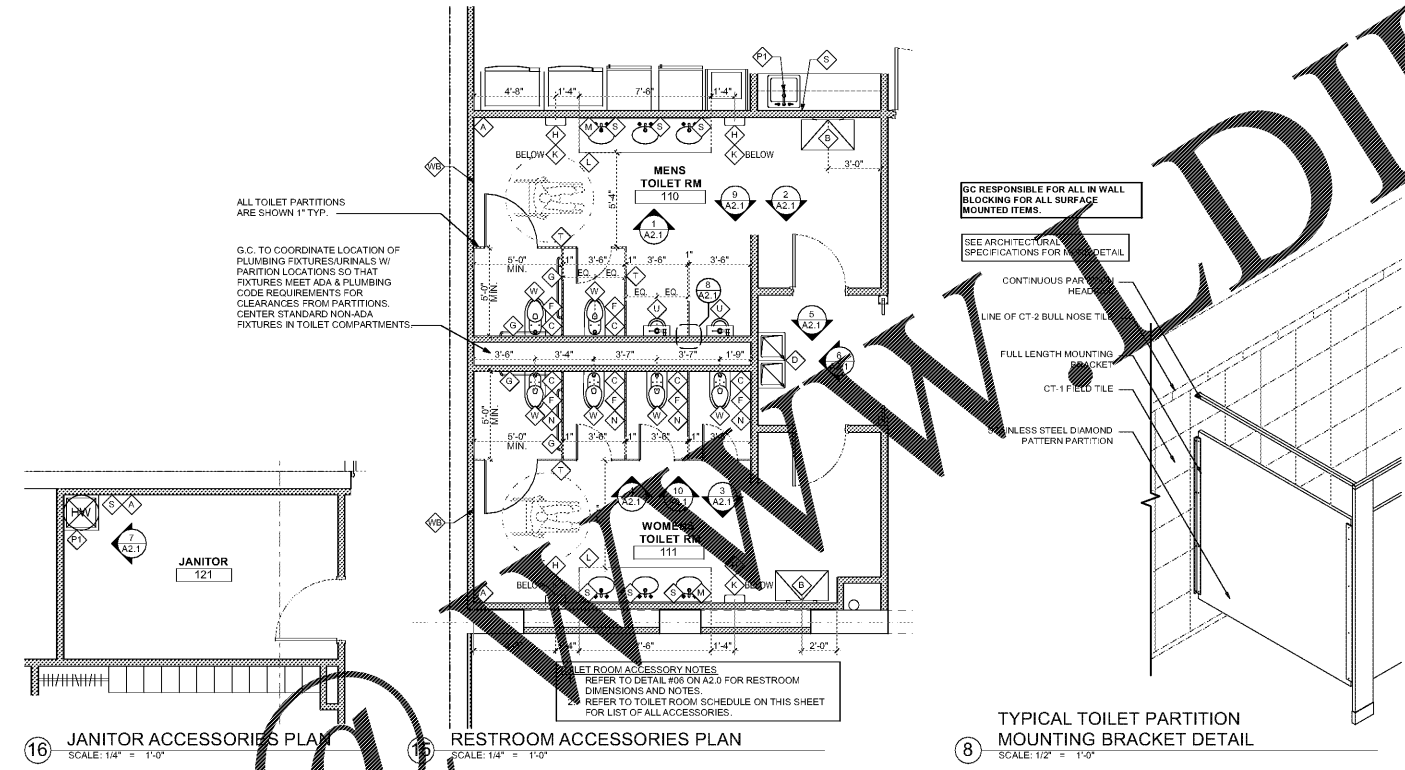
TOILET ROOM SCHEDULE		
ITEM DESCRIPTION	MANUFACTURER / MODEL NUMBER	REMARKS / NOTES
A TRASH RECEPTACLE	22 GAL. ROUND GRAY PLASTIC UNTOUCHABLE TRASH CAN (RUB3546GRAY) W/ FUNNEL LID (RUB3546GRAY)	PROVIDED BY BURLINGTON
B BABY CHANGING STATION	AMERICAN SPECIALTIES, INC. MODEL #103012	TO BE INSTALLED PER LOCAL ACCESSIBILITY REQUIREMENTS & GUIDELINES.
C TOILET SEAT COVER DISPENSER	AMERICAN SPECIALTIES, INC. MODEL #0477-SM	
D WILD WATER COOLER	REFER TO P1.1 FOR SPECS	
F TOILET PAPER DISPENSER	AMERICAN SPECIALTIES, INC. MODEL #0040	TO BE INSTALLED PER LOCAL ACCESSIBILITY REQUIREMENTS & GUIDELINES.
G GRAB BAR	AMERICAN SPECIALTIES, INC. SERIES #9700	ALL FASTENERS TO BE CONCEALED. SEE EXCEPTION IN NOTES BELOW.
H HAND DRYER	XLERATOR MODEL # XL-SB, SURFACE MOUNTED	
J WALL MOUNT SINK	REFER TO P1.1 FOR SPECS	(PROJECT SPECIFIC PER BCF FIXTURE PLAN. TO BE USED IN PRIVACY ROOM.)
K WALL SHIELD	14" x 14" x 1/8" THICK STAINLESS STEEL SHIELD W/ 1" RADIUS ROUNDED EDGES	ATTACHED TO CERAMIC TILE BELOW 1/4" W/ HEAVY DUTY ADHESIVE
L LAVATORY & COUNTER	SAMSUNG STARON SOLID SURFACE COUNTERTOP & 4" BACKSPLASH (COLOR: 0824 QUARRY BLUFF) W/ INTEGRAL SINK BASINS (COLOR: A3181 PEARL)	SEE DETAILS ON A4.1
M FULL LENGTH MIRROR	FULL LENGTH STAINLESS STEEL CHANNEL FRAMED MIRROR W/ MITERED CORNER & BRIGHT FINISH	
M1 SINGLE MIRROR	18" x 36" STAINLESS STEEL CHANNEL FRAMED MIRROR W/ MITERED CORNERS & BRIGHT FINISH	ANGLED IF REQ'D BY CODE (PROJECT SPECIFIC PER BCF FIXTURE PLAN. TO BE USED IN PRIVACY ROOM.)
N SANITARY NAPKIN RECEPTACLE	AMERICAN SPECIALTIES, INC. MODEL #20852	
P1 PAPER TOWEL DISPENSER	KIMBERLY CLARK, IN-SIGHT MODEL #08785	EMPLOYEE BREAK ROOM, PRIVACY & JANITOR, MANUAL OPERATION
S SOAP DISPENSER	GOJO ADX-15	
T TOILET PARTITION	GENERAL PARTITIONS, INC.	STAINLESS STEEL DIAMOND PATTERN HEAD RAIL, SERIES 40.
U URINAL	REFER TO P1.1 FOR SPECS	
W WATER CLOSET	REFER TO P1.1 FOR SPECS	
WB WALL BUMPER	EVES W5408CVX US200	PROVIDE WOOD BLOCKING IN WALLS AS REQUIRED
WC BOTTLE LESS WATER COOLER	PEAK BOTTLE LESS WATER COOLER MODEL #BDX1-B	PROVIDE WHEN ADDITIONAL DRINKING FOUNTAIN IS REQUIRED BY LOCAL CODE.

NOTES:
 1. ALL ACCESSORIES & PLUMBING FIXTURES TO BE INSTALLED PER LOCAL ACCESSIBILITY REQUIREMENTS & GUIDELINES.
 2. SEE A0.3 FOR ACCESSIBILITY DETAILS.
 3. WHEN GRAB BARS ARE MOUNTED ON PARTITIONS, PROVIDE #9000 GRAB BAR REINFORCEMENT KIT BY GENERAL PARTITIONS (OR EQUAL).

INTERIOR ELEVATION NOTES	
CODED NOTES:	
575.	SOLID SURFACE COUNTERTOP W/ INTEGRAL SINKS & 3/4" PARTICLE BOARD PLUMBING ENCLOSURE / APRON BELOW. SEE DETAIL ON A4.1.
576.	GFI DUPLEX RECEPTACLE. SEE ELECTRICAL DRAWINGS FOR DETAILS (COLOR TO BE WHITE).
577.	ALUMINUM COVE-SHAPED FLOOR-TO-WALL TRANSITION. NOT USED.
578.	INSTALL PIPE WRAP INSULATION ON ALL EXPOSED PIPING, TYP. (PROJECT SPECIFIC PER BCF FIXTURE PLAN. TO BE USED IN PRIVACY ROOM.)
580.	MOP SINK W/ HOT WATER TANK MOUNTED ABOVE, SEE PLUMBING DRAWINGS FOR MORE DETAIL. FRP TO EXTEND 4'-0" HORIZONTALLY ON BOTH WALLS SURROUNDING MOP SINK.
581.	MOP HANGER.
583.	HOSE HANGER.
584.	MOP SINK WITH FAUCET. SEE PLUMBING DRAWINGS FOR MORE DETAIL.
585.	LEVEL 5 WALL FINISH REQUIRED THROUGHOUT ENTIRE TENANT SPACE. SEE FINISH SCHEDULE ON A4.0 FOR LEVEL DEFINITIONS. INSTALL ALUMINUM CORNER (ST-3) @ WING WALL CORNERS IN RESTROOMS AS SHOWN.
587.	INSTALL 1/2" F.T. PLYWOOD ON ALL WALLS IN JANITOR ROOM. MOUNT @ 12" A.F.F. AND GRIP TO FACE.
588.	FULL LENGTH MOUNTING BRACKETS. SEE DETAIL 14 THIS SHEET FOR MORE INFORMATION.
589.	CONTINUOUS PARTITION HEAD RAIL. SEE DETAIL 14 THIS SHEET FOR MORE INFORMATION.

- INTERIOR ELEVATION GENERAL NOTES**
1. DO NOT SCALE DRAWING.
 2. DIMENSIONS FROM FACE OF FINISHED WALL TO FACE OF FINISHED WALL UNLESS NOTED OTHERWISE. (U.N.O.)
 3. SEE SCHEDULE AND DETAILS ON SHEET A4.0 FOR PARTITION TYPES, ROOM SCHEDULE, FINISH SCHEDULE, DOOR SCHEDULE, AND DOOR TYPES.
 4. IT IS THE RESPONSIBILITY OF THE GENERAL CONTRACTOR TO CROSS-CHECK THE M.E.P. DRAWINGS WITH THE ARCHITECTURAL DRAWING PRIOR TO THE ORDERING / INSTALLATION OF MECHANICAL, ELECTRICAL AND PLUMBING WORK. ANY DISCREPANCIES BETWEEN THE ARCHITECTURAL AND M.E.P. DRAWINGS SHALL BE BROUGHT TO THE ARCHITECT'S ATTENTION FOR IMMEDIATE CLARIFICATION.
 5. ALL CONSTRUCTION SHALL COMPLY WITH ALL APPLICABLE STATE, CITY AND LOCAL CODES AND ORDINANCES AT THE LOCATION OF THE PROJECT.
 6. WHERE EXISTING CONDITIONS ARE CUT OR DISTURBED TO PERMIT INSTALLATION OF NEW WORK, MATCH AND PATCH EXISTING DISTURBED CONSTRUCTION TO ORIGINAL CONDITION.
 7. CONTRACTOR TO VERIFY ALL PLYWOOD REQUIRED FOR ELECTRICAL EQUIPMENT WITH ELECTRICAL SHEETS. INSTALL PLYWOOD AS DIRECTED ON ELECTRICAL SHEETS.
 8. DIMENSIONS AND CONDITIONS SHALL BE VERIFIED IN THE FIELD BY THE GENERAL CONTRACTOR (G.C.) PRIOR TO CONSTRUCTION OR ORDER OF MATERIALS. ANY REVISIONS, CHANGES, DEVIATIONS OR INCONSISTENCIES BETWEEN THE AS-BUILT CONDITIONS AND THESE DRAWINGS SHALL IMMEDIATELY BE REPORTED TO THE OWNER BEFORE CONSTRUCTION.
 9. INSTALL CORNER GUARDS ON ALL GYPSUM BOARD CORNERS THROUGHOUT ENTIRE BURLINGTON SPACE. CG-1 TO BE INSTALL IN SALES, OFFICE & RESTROOM CORRIDOR AREAS. CG-2 TO BE INSTALL IN STOCK AREAS.
 10. SEE SHEET A1.3 FOR MORE DETAIL ON DOOR TAG CALLOUTS.
 11. SEE A0.3 FOR ALL ACCESSIBILITY DETAILS.
 12. CONFIRM LOCATIONS OF EQUIPMENT AND PLYWOOD IN EQUIPMENT ROOM WITH BURLINGTON PROJECT MANAGER PRIOR TO INSTALLATION. WALL SHELVING TO BE CENTERED OVER CORNERS, U.N.O.

SYMBOL LEGEND	
SYMBOL	DESCRIPTION
ROOM ###	ROOM NAME & NUMBER (SEE SCHEDULE SHEET ON A4.0)
###	CODED NOTE (SEE SPECIFIC SHEET CODED NOTES)
X	FIXTURE / ACCESSORY (SEE TOILET ROOM SCHEDULE)
XXX	FINISH TAG (SEE FINISH SCHEDULE ON SHEET A4.0)



William J. Fearon Architects
 601 Chapel Avenue East
 Cherry Hill, New Jersey 08034
 P 856.428.9877
 F 856.428.6379
 W wjfearon.com

WILLIAM J. FEARON ARCHITECT
 LICENSED ARCHITECT
 STATE OF VIRGINIA
 LICENSE NO. 00101701

Date: 02/22/16
 William J. Fearon AIA
 VA 017651

CLIENT & PROJECT

Burlington
 BURLINGTON STORES, INC.
 1830 ROUTE 130 NORTH
 BURLINGTON, NEW JERSEY
 08016

INTERIOR TENANT IMPROVEMENT FOR BURLINGTON STORES AT MANASSAS, VA STORE #188

SUDLEY TOWN PLAZA
 7685 SUDLEY ROAD
 MANASSAS, VA 20109
 PRINCE WILLIAM COUNTY

DISTRIBUTION: DATE: 0 PERMIT SUBMISSION 02/22/2016

PROJECT INFO:
 PROJECT NUMBER: 9333.10
 DRAWN: JMD
 CHECKED: JMD

NOTE & COPYRIGHT:
 CONTRACTORS SHALL VERIFY EXISTING CONDITIONS AND CORRELATE DIMENSIONS PRIOR TO PROVIDING THE WORK. DETAILS IN THESE DRAWINGS AND SHALL PROMPTLY NOTIFY THE ARCHITECT OF ANY DISCREPANCIES. UNAUTHORIZED REPRODUCTION OR OTHER USE OF THIS DRAWING IS PROHIBITED.

DRAWING NAME & TITLE:
 ENLARGED PLANS
 A2.1

Order Plans @