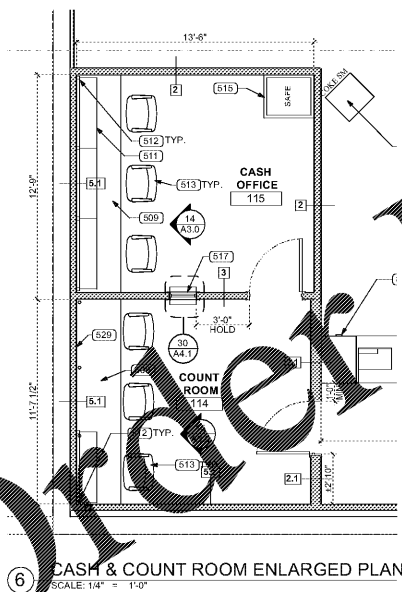
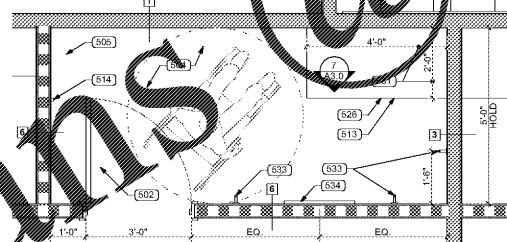


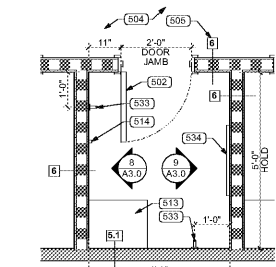
18 OFFICE CORE ENLARGED PLAN  
SCALE: 1/4" = 1'-0"



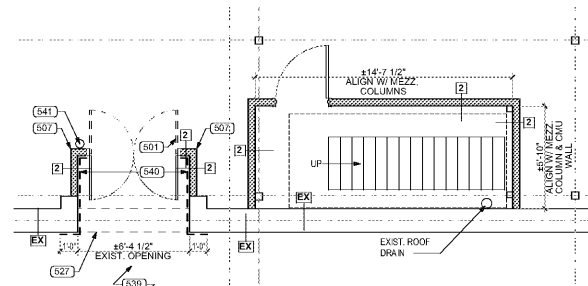
6 CASH & COUNT ROOM ENLARGED PLAN  
SCALE: 1/4" = 1'-0"



10 TYP. FITTING ROOM STALL ACCESSORIES PLAN  
SCALE: 1/2" = 1'-0"



4 TYP. FITTING ROOM STALL ACCESSORIES PLAN  
SCALE: 1/2" = 1'-0"



8 RECEIVING ENTRY ENLARGED PLAN  
SCALE: 1/4" = 1'-0"

ENLARGED PLAN NOTES

- HOLLOW METAL DOOR. SEE DOOR SCHEDULE ON A4.0 FOR DETAILS.
- ELIASON STOCK ROOM DOOR. SEE DOOR SCHEDULE ON A4.0 FOR DETAILS.
- WOOD FITTING ROOM DOOR. SEE DOOR SCHEDULE ON A4.0 FOR DETAILS.
- PROVIDE EXIT FACILITY SIGNAGE PER NOTES ON A0.3. TYPICAL AT ALL EXTERIOR DOOR LOCATIONS & WHERE LOCAL JURISDICTION OFFICIALS AND/OR CODE REQUIRE.
- LEVEL 5 WALL FINISH REQUIRED THROUGHOUT ENTIRE TENANT SPACE. SEE FINISH SCHEDULE ON A4.0 FOR LEVEL DEFINITIONS.
- PARTITION WALL TYPE. SEE PARTITION SCHEDULE ON A4.0 FOR DETAILS.
- INSTALL CORNER GUARDS (CG-1) ON ALL GYPSUM BOARD OUTSIDE CORNERS IN STOCK / RECEIVING AREAS.
- INSTALL CORNER GUARDS (CG-1) ON ALL GYPSUM BOARD OUTSIDE CORNERS IN SALES & OFFICE AREAS.
- INSTALL ALUMINUM CORNER (ST-3) @ WING WALL CORNERS IN RESTROOMS AS SHOWN.
- 30" DEEP PLASTIC LAMINATE COUNTER @ 32" A.F.F. SEE FINISH SCHEDULE ON A4.0 FOR MORE DETAIL.
- NOT USED.
- 12" DEEP PLASTIC LAMINATE SHELVING ABOVE COUNTER. SEE FINISH SCHEDULE ON A4.0 FOR MORE DETAIL.
- 2" DIAMETER PLASTIC DESK / COUNTER GROMMET (COLOR: WHITE) LOCATED 4" FROM ROOM WALL BELOW EACH VERTICAL SHELF STANDARD & 4" FROM BOTH ENDS (LEFT & RIGHT). WHEN NO SHELF STANDARDS EXIST, INSTALL GROMMETS @ 4" O.C. & 4" FROM BOTH ENDS (LEFT & RIGHT).
- OFFICE / BREAK / FITTING ROOM FURNITURE FURNISHED BY BURLINGTON.
- DOOR STOP MOUNTED @ 3'-4" A.F.F.
- CASH ROOM SAFE. ANCHOR TO FLOOR PER MANUFACTURER'S SPECIFICATION.
- EMPLOYEE TIME CLOCK. SEE ELECTRICAL SHEETS FOR MORE DETAIL.
- PASS THRU WINDOW. SEE DETAIL 4 ON A4.1 FOR MORE DETAIL.
- BREAK ROOM COUNTER W/ SINK. SEE DETAIL 8 ON A4.1 FOR PLUMBING SHEETS FOR MORE DETAIL.
- NOT USED.
- 12" DEEP PLASTIC LAMINATE SHELVING ABOVE COUNTER. SEE FINISH SCHEDULE ON A4.0 FOR MORE DETAIL.
- 2" DIAMETER PLASTIC DESK / COUNTER GROMMET (COLOR: WHITE) LOCATED 4" FROM ROOM WALL BELOW EACH VERTICAL SHELF STANDARD & 4" FROM BOTH ENDS (LEFT & RIGHT). WHEN NO SHELF STANDARDS EXIST, INSTALL GROMMETS @ 4" O.C. & 4" FROM BOTH ENDS (LEFT & RIGHT).
- OFFICE / BREAK / FITTING ROOM FURNITURE FURNISHED BY BURLINGTON.
- DOOR STOP MOUNTED @ 3'-4" A.F.F.
- CASH ROOM SAFE. ANCHOR TO FLOOR PER MANUFACTURER'S SPECIFICATION.
- EMPLOYEE TIME CLOCK. SEE ELECTRICAL SHEETS FOR MORE DETAIL.
- PASS THRU WINDOW. SEE DETAIL 4 ON A4.1 FOR MORE DETAIL.
- BREAK ROOM COUNTER W/ SINK. SEE DETAIL 8 ON A4.1 FOR PLUMBING SHEETS FOR MORE DETAIL.
- NOT USED.
- EMPLOYEE FRIDGE / FREEZER. SEE ELECTRICAL SHEETS FOR MORE DETAIL.
- EMPLOYEE VENDING MACHINE. SEE ELECTRICAL SHEETS FOR MORE DETAIL.
- EMPLOYEE LOCKERS. SEE ACCESSIBILITY DETAILS ON INTERIOR ELEVATIONS ON A3.0 FOR MORE DETAIL.
- TV & MOUNTING BRACKET MOUNT @ 1'-6" BELOW FIN. CEILING. PROVIDE FIRE RATED WOOD BLOCKING BEHIND TV AS REQUIRED FOR TV. SEE ELECTRICAL SHEETS FOR MORE DETAIL.
- RESTROOM GENDER & SINGLE SIGNAGE. SEE ACCESSIBILITY DETAILS ON A0.3 FOR MORE DETAIL.
- MOP SINK W/ HOT WATER ABOVE. SEE PLUMBING DRAWINGS FOR MORE DETAIL.
- POP & HOSE HANGER. SEE ELECTRICAL SHEETS FOR MORE DETAIL.
- MOUNT ACCESSIBLE BENCH TO WALL PER ACCESSIBILITY REQUIREMENTS. SEE SHEET A0.3 FOR MORE DETAIL.
- 30" DEEP PLASTIC LAMINATE COUNTER @ 32" A.F.F.
- 30" DEEP PLASTIC LAMINATE SHELVING ABOVE COUNTER. SEE FINISH SCHEDULE ON A4.0 FOR MORE DETAIL.
- ACCESSIBILITY TUBE. TOP CAP TO BE REMOVABLE. BOTTOM OF TUBE TO BE 6" A.F.F.
- ACCESSIBLE TOILET. SEE INTERIOR ELEVATIONS ON A3.0 & FINISH SCHEDULE ON A4.0 FOR MORE DETAIL.
- PROVIDE 1X4 WOOD TRIM MOLDING AT TOP OF BOTH SIDES OF FITTING ROOM STALL WALLS.
- PROVIDE SHEET METAL BEHIND GYP. BD. IN ACCESSIBLE FITTING ROOM STALL FROM 5" TO 15" A.F.F. WHERE SHOWN ON 2 & 3 A3.0.
- 48" WIDE X 36" HIGH BULLETIN BOARDS. SEE INTERIOR ELEVATIONS ON SHEET A3.0 FOR ADDITIONAL INFORMATION.
- CLOTHING HOOK MOUNTED @ 5'-8" A.F.F. IN STANDARD FITTING ROOM, OR MOUNTED @ 4'-0" A.F.F. IN ACCESSIBLE FITTING ROOM.
- 2'-0" X 5'-0" MIRROR @ 1'-0" A.F.F. USE CLEAR SILICONE CAULK AROUND ALL EDGES. GC TO FINISH.
- BURGLAR & FIRE ALARM PANELS MOUNTED ON 8'X4'3/4" FIRE RATED PLYWOOD PANEL PER ELECTRICAL DRAWINGS.
- PHONE AND IT EQUIPMENT MOUNTED ON 8'X4'3/4" FIRE RATED PLYWOOD PANEL PER ELECTRICAL DRAWINGS.
- INSTALL 1/2" FIRE RATED PLYWOOD ON ALL WALLS IN JANITOR'S CLOSET. MOUNT @ 12" A.F.F. AND GO UP TO 8'-0" A.F.F.
- KYDEX TO BE INSTALLED OVER PLYWOOD TO 48" A.F.F. AT COLUMNS NEAR ENTRY TO STOCK AREA. CONFIRM FINAL LOCATIONS WITH BURLINGTON PM.
- DASHED LINE INDICATES UP TO BE INSTALLED UP TO 4'-0" A.F.F.
- APPROXIMATE LOCATION OF FIRE EXTINGUISHER. CONFIRM REQUIREMENTS AND LOCATIONS WITH LOCAL FIRE MARSHALL PRIOR TO INSTALLATION OF MATERIALS.
- BMS LOD OVERRIDE PANEL. SEE ELECTRICAL DRAWINGS FOR MORE DETAIL.
- NOT USED.
- SEASONAL CASH WRAPS TO RECEIVE POWER AND DATA OFF WALL LOCATION @ 24" A.F.F. SEE ELECTRICAL DRAWINGS FOR MORE DETAIL. G.C. TO CONFIRM FINAL PLACEMENT WITH BURLINGTON PROJECT MANAGER & ARCHITECT PRIOR TO INSTALLATION OF MATERIALS.
- FROST SLAB (IF REQ'D)
- NOT USED.
- NOVAR EQUIPMENT MOUNTED ON 4'X8'3/4" FIRE RATED PLYWOOD PANEL PER ELECTRICAL DRAWINGS.
- NOT USED.
- FRP ON WALLS BEHIND MOP SINK. SEE SHEETS A2.1 & A4.0 FOR MORE DETAIL.
- INSTALL 1/2" FIRE RATED PLYWOOD ON ALL WALLS IN CORRIDOR TO 4'-0" A.F.F. SEE WALL TYPE 7 ON SHEET A4.0.
- WALL MOUNTED AIR CONDITIONING UNIT CENTERED ABOVE DOOR. SEE ELECTRICAL AND MECHANICAL SHEETS FOR MORE INFORMATION.
- 72" WIDE X 48" HIGH BULLETIN BOARDS. SEE INTERIOR ELEVATIONS ON SHEET A3.0 FOR ADDITIONAL INFORMATION.
- MICROWAVE CABINET. SEE DETAIL ON A4.1 FOR MORE INFORMATION.
- 22" X 28" SNAP FRAME GRAPHICS FURNISHED BY BURLINGTON.
- VINYL WALL COVERING BY ASTEK WALL COVERING. SEE FINISH SCHEDULE ON SHEET A4.0 FOR MORE INFORMATION.
- SENSORIATIC DOOR-MAX PEDESTAL LOSS PREVENTION SYSTEM. SEE ELECTRICAL DRAWINGS FOR MORE DETAIL. SEE RESPONSIBILITY SCHEDULE ON A0.1 FOR CONTACT INFORMATION.

ENLARGED PLAN GENERAL NOTES

- DO NOT SCALE DRAWING
- DIMENSIONS ARE FROM FACE OF FINISHED WALL TO FACE OF FINISHED WALL UNLESS NOTED OTHERWISE. (U.N.O.)
- SEE SCHEDULE AND DETAILS ON SHEET A4.0 FOR PARTITION TYPES, ROOM SCHEDULE, FINISH SCHEDULE, DOOR SCHEDULE, AND DOOR TYPES.
- IT IS THE RESPONSIBILITY OF THE GENERAL CONTRACTOR TO CROSS-CHECK THE M.E.P. DRAWINGS WITH THE ARCHITECTURAL DRAWING PRIOR TO THE ORDERING / INSTALLATION OF MECHANICAL, ELECTRICAL AND PLUMBING WORK. ANY DISCREPANCIES BETWEEN THE ARCHITECTURAL AND M.E.P. DRAWINGS SHALL BE BROUGHT TO THE ARCHITECT'S ATTENTION FOR IMMEDIATE CLARIFICATION.
- ALL CONSTRUCTION SHALL COMPLY WITH ALL APPLICABLE STATE, CITY AND LOCAL CODES AND ORDINANCES AT THE LOCATION OF THE PROJECT.
- APPROVED FIRE EXTINGUISHERS SHALL BE LOCATED AS PER THE FIRE MARSHALL DIRECTION.
- WHERE EXISTING CONDITIONS ARE CUT OR DISTURBED TO PERMIT INSTALLATION OF NEW WORK, MATCH AND PATCH EXISTING DISTURBED CONSTRUCTION TO ORIGINAL CONDITION. CONTRACTOR TO VERIFY ALL PLYWOOD REQUIRED FOR ELECTRICAL EQUIPMENT WITH ELECTRICAL SHEETS. INSTALL PLYWOOD AS DIRECTED ON ELECTRICAL SHEETS.
- DIMENSIONS AND CONDITIONS SHALL BE VERIFIED IN THE FIELD BY THE GENERAL CONTRACTOR (G.C.) PRIOR TO CONSTRUCTION OR ORDER OF MATERIALS. ANY REVISIONS, CHANGES, DEVIATIONS OR INCONSISTENCIES BETWEEN THE AS-BUILT CONDITIONS AND THESE DRAWINGS SHALL IMMEDIATELY BE REPORTED TO THE OWNER BEFORE CONSTRUCTION.
- ALL EQUIPMENT TO BE MOUNTED ON SALES FLOOR COLUMNS/WALLS SHALL BE MOUNTED ON THE BACKSIDE OF THE COLUMN/WALL (IF POSSIBLE) WHEN ENTERING THE STORE FROM THE MAIN ENTRY VESTIBULE.
- INSTALL CORNER GUARDS ON ALL GYPSUM BOARD CORNERS THROUGHOUT ENTIRE BURLINGTON SPACE. CG-1 TO BE INSTALL IN SALES, OFFICE & RESTROOM CORRIDOR AREAS. CG-2 TO BE INSTALL IN STOCK & RECEIVING AREAS.
- SEE SHEET A1.3 FOR MORE DETAIL ON DOOR TAG CALLOUTS.
- ALL INTERIOR DOORS ARE 6" OFF FINISHED WALL U.N.O.

PARTITION LEGEND

SYMBOL	DESCRIPTION
[Solid Line]	NEW FULL HEIGHT PARTITION, REFER TO SHEET A4.0
[Dashed Line]	NEW PARTIAL HEIGHT PARTITION, REFER TO SHEET A4.0

SYMBOL LEGEND

SYMBOL	DESCRIPTION
[#]	PARTITION TYPE (SEE SCHEDULE SHEET ON A4.0)
[Room #]	ROOM NAME & NUMBER (SEE SCHEDULE SHEET ON A4.0)
[###]	CODED NOTE (SEE SPECIFIC SHEET CODED NOTES)

**William Fearon Architects**  
ARCHITECTS  
601 Chapel Avenue East  
Cherry Hill, New Jersey 08034  
P 856.425.8877  
F 856.425.8379  
W wfearonarchitects.com

Date: 02/22/16  
William J Fearon AIA  
VA 017651

CLIENT & PROJECT  
**Burlington**  
BURLINGTON STORES, INC.  
1830 ROUTE 130 NORTH  
BURLINGTON, NEW JERSEY  
08016

**Burlington**  
BURLINGTON STORES, INC.  
1830 ROUTE 130 NORTH  
BURLINGTON, NEW JERSEY  
08016

INTERIOR TENANT IMPROVEMENT  
FOR BURLINGTON STORES AT  
**MANASSAS, VA**  
**STORE #188**  
SUDLEY TOWN PLAZA  
7685 SUDLEY ROAD  
MANASSAS, VA 20109  
PRINCE WILLIAM COUNTY

DISTRIBUTION:	DATE:
0 PERMIT SUBMISSION	02/22/2016

PROJECT INFO:	
PROJECT NUMBER:	9333.10
DRAWN:	PPW
CHECKED:	JMD

**NOTE & COPYRIGHT:**  
CONTRACTORS SHALL VERIFY EXISTING CONDITIONS AND CORRELATE DIMENSIONS PRIOR TO PROVIDING THE WORK. DETAIL IN THESE DRAWINGS AND SHALL PROMPTLY NOTIFY THE ARCHITECT OF ANY DISCREPANCIES. UNAUTHORIZED REPRODUCTION OR OTHER USE OF THIS DRAWING IS PROHIBITED.

**DRAWING NAME & TITLE:**  
ENLARGED PLANS  
**A2.0**