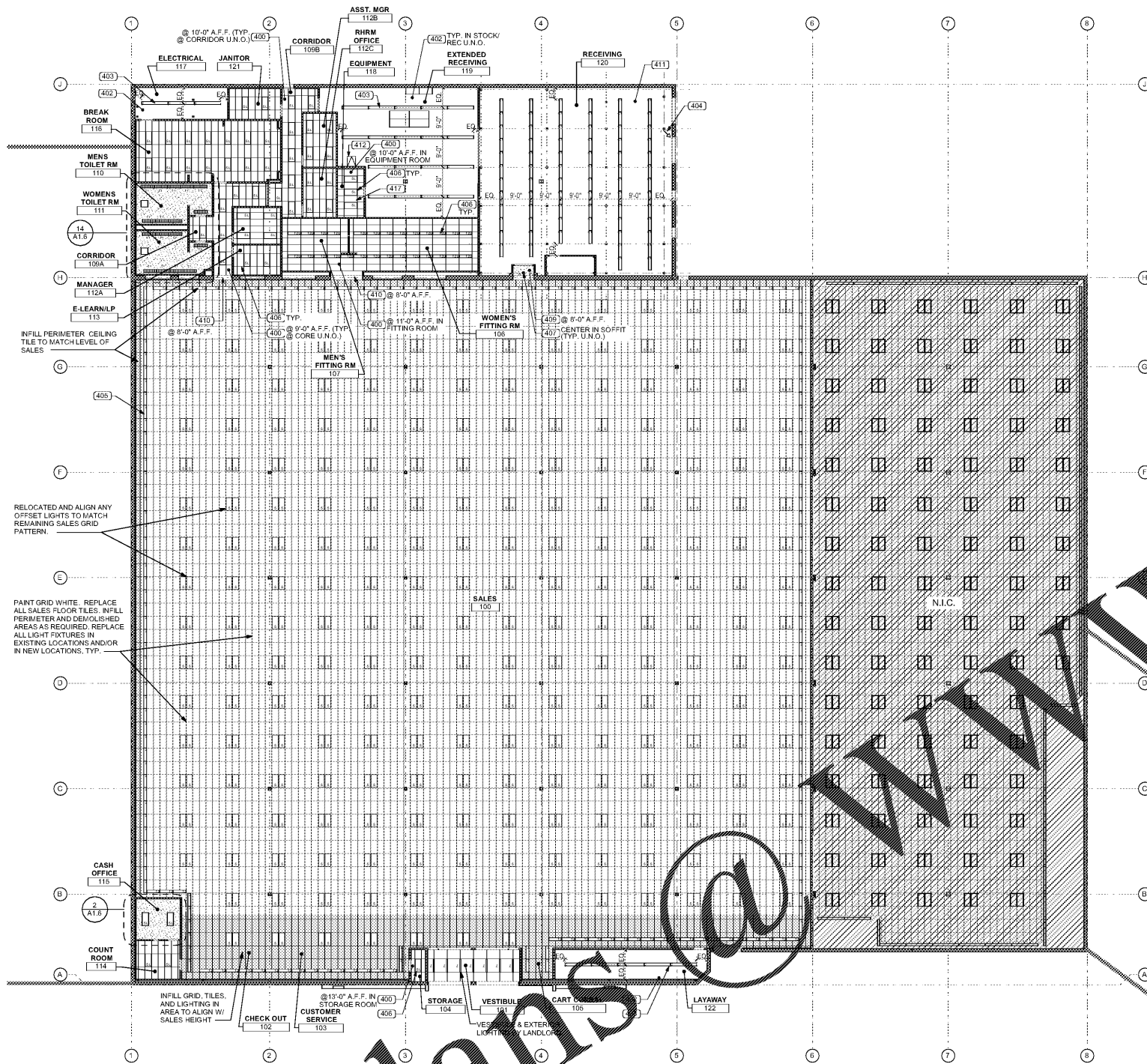


INSTALLATION NOTE:
ALL LIGHTING TO BE INSTALLED STRAIGHT AND LEVEL.



LIGHT FIXTURES LEGEND		
TYPE	MOUNTING HEIGHT	QUANTITY*
C	13'-0"	26
C1	13'-0"	136
J	10'-0"	1
R	13'-0"	1
S	9'-0"	462
SL	9'-0"	51
T1	9'-0"	17
T2	13'-0"	193
T2L	10'-0"	27

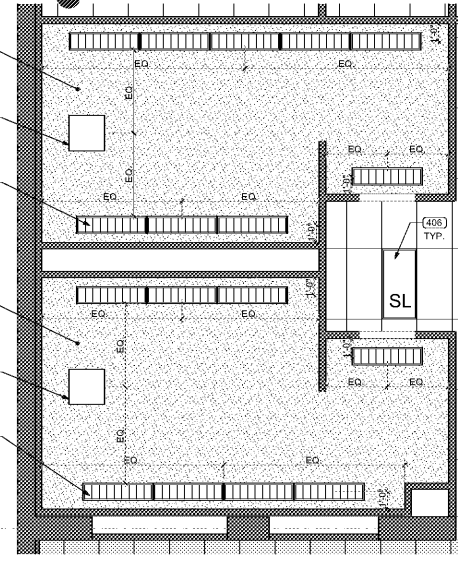
*QUANTITIES ARE FOR COURTESY REFERENCE ONLY. CONTRACTOR TO VERIFY QUANTITIES & BE RESPONSIBLE FOR FINAL COUNT DETERMINATION.
REFERENCE ELECTRICAL LIGHTING LEGEND FOR LIGHT DESCRIPTIONS.

- REFLECTED CEILING PLAN CODED NOTES**
- ACOUSTIC CEILING TILE IN SUSPENDED METAL T-GRID SYSTEM. SEE PLAN FOR HEIGHTS. SEE FINISH SCHEDULE ON A4.0 FOR DETAILS.
 - GYPSUM BOARD CEILING. SEE PLAN FOR HEIGHTS. SEE FINISH SCHEDULE ON A4.0 FOR DETAILS.
 - EXPOSED STRUCTURE. PAINT PER FINISH SCHEDULE ON A4.0. ALL EXPOSED CONDUIT TO BE PAINTED TO MATCH STRUCTURE. ALL WIRES TO BE TUCKED TIGHT TO STRUCTURE (MUST NOT BE VISIBLE FROM BELOW).
 - SUSPENDED LIGHT FIXTURE. SEE LEGEND THIS SHEET AND ELECTRICAL DRAWINGS FOR DETAILS. ALL SALES FLOOR LIGHTING IN CONTINUOUS ROWS TO HAVE STRUTS INSTALLED TO ENSURE ALIGNMENT. ALL RECEIVING, STOCK & LAYAWAY/SUSPENDED LIGHTS TO BE CENTERED OVER AISLES BETWEEN SHELVING FIXTURES (GC MUST COORDINATE LIGHTS WITH FINAL FIXTURE PLAN).
 - DOCK LIGHT FIXTURE. SEE LEGEND THIS SHEET AND ELECTRICAL DRAWINGS FOR DETAILS. MOUNT LIGHT @ 8'-6" A.F.F.
 - PERIMETER LIGHT FIXTURE. SEE LEGEND THIS SHEET AND ELECTRICAL DRAWINGS FOR DETAILS. PERIMETER LIGHTS TO BE 2" OFF PERIMETER WALLS.
 - RECESSED LIGHT FIXTURE. SEE LEGEND THIS SHEET AND ELECTRICAL DRAWINGS FOR DETAILS.
 - RECESSED SOFFIT CAN LIGHT FIXTURE. SEE LEGEND THIS SHEET AND ELECTRICAL DRAWINGS FOR DETAILS.
 - NOT USED.
 - GYPSUM BOARD SOFFIT. SEE LEGEND THIS SHEET AND ELECTRICAL DRAWINGS FOR DETAILS.
 - GYPSUM BOARD BULK HEAD. SEE DETAIL 1 ON THIS SHEET FOR DETAILS. SEE PLAN FOR CHANGES. DRAWING FOR MORE DETAIL.
 - BILCO TYPE #20 3" x 2'-6" HATCH. SEE DETAILS ON A17 FOR DETAILS. CONTRACTOR TO VERIFY LOCATION OF EXISTING JOISTS AND BEAMS TO THAT THEY DO NOT CONFLICT WITH ROOF HATCH LOCATION.
 - DRY DASH LINE SHOWS ROOF TOP UNIT ABOVE.
 - NOT USED.
 - SCUDOR #102 CEILING ACCESS PANEL. PAINT TO MATCH CEILING.
 - NOT USED.
 - WALL MOUNTED SPLIT SYSTEM CENTERED OVER DOOR. SEE ELECTRICAL AND MECHANICAL DRAWINGS FOR MORE INFORMATION. CONSULT WITH BURLINGTON PROJECT MANAGER WHERE LIGHTS FALL UNDER CONCENTRIC DIFFUSERS IF CONFLICT OCCURS. BURLINGTON PROJECT MANAGER TO GIVE DIRECTION ON LIGHT RELOCATION IF REQUIRED DUE TO LIGHT / CONCENTRIC DIFFUSER CONFLICT.
 - SURFACE MOUNTED LED LIGHT FIXTURE. SEE LEGEND THIS SHEET AND ELECTRICAL DRAWINGS FOR MORE DETAILS.

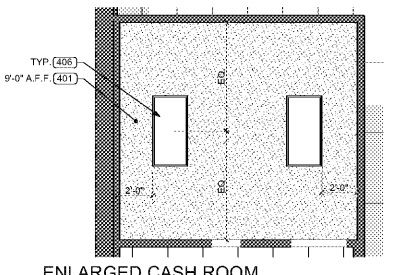
- REFLECTED CEILING PLAN GENERAL NOTES**
- DO NOT SCALE DRAWING.
 - DIMENSIONS ARE FROM FACE OF FINISHED WALL TO FACE OF FINISHED WALL UNLESS NOTED OTHERWISE. (U.N.O.)
 - SEE SCHEDULE AND DETAILS ON SHEET A4.0 FOR PARTITION TYPES, ROOM SCHEDULE, FINISH SCHEDULE, DOOR SCHEDULE, AND DOOR TYPES.
 - IT IS THE RESPONSIBILITY OF THE GENERAL CONTRACTOR TO CROSS-CHECK THE M.E.P. DRAWINGS WITH THE ARCHITECTURAL DRAWING PRIOR TO THE ORDERING / INSTALLATION OF MECHANICAL, ELECTRICAL AND PLUMBING WORK. ANY DISCREPANCIES BETWEEN THE ARCHITECTURAL AND M.E.P. DRAWINGS SHALL BE BROUGHT TO THE ARCHITECT'S ATTENTION FOR IMMEDIATE CLARIFICATION. ALL CONSTRUCTION SHALL COMPLY WITH ALL APPLICABLE STATE, CITY AND LOCAL CODES AND ORDINANCES AT THE LOCATION OF THE PROJECT.
 - WHERE EXISTING CONDITIONS ARE CUT OR DISTURBED TO PERMIT INSTALLATION OF NEW WORK, MATCH AND PATCH EXISTING DISTURBED CONSTRUCTION TO ORIGINAL CONDITION. DIMENSIONS AND CONDITIONS SHALL BE VERIFIED IN THE FIELD BY THE GENERAL CONTRACTOR (G.C.) PRIOR TO CONSTRUCTION OR ORDER OF MATERIALS. ANY REVISIONS, CHANGES, DEVIATIONS OR INCONSISTENCIES BETWEEN THE AS-BUILT CONDITIONS AND THESE DRAWINGS SHALL IMMEDIATELY BE REPORTED TO THE OWNER BEFORE CONSTRUCTION.
 - ALL EQUIPMENT TO BE MOUNTED ON SALES FLOOR COLUMNS/WALLS SHALL BE MOUNTED ON THE BACKSIDE OF THE COLUMN/WALL (IF POSSIBLE) WHEN ENTERING THE STORE FROM THE MAIN ENTRY VESTIBULE.
 - LAY-IN CEILING GRID TO BE CENTERED IN ROOM U.N.O.

SYMBOL LEGEND	
SYMBOL	DESCRIPTION
[Symbol]	SEE E5.0 FOR SPECIFICATIONS
[Symbol]	NEW 15/16" 2x4 SUSPENDED GRID CEILING (SCG-1) W/ NEW NON DIRECTIONAL FISSURED 24x5/8" ACOUSTICAL TILE CEILING (ACT-1)
[Symbol]	NEW GYPSUM BOARD CEILING PROVIDE METAL STUD FRAMING AS REQUIRED SEE SCHEDULES ON A4.0
ROOM	ROOM NAME & NUMBER (SEE SCHEDULE SHEET ON A4.0)
[Symbol]	CODED NOTE (SEE SPECIFIC SHEET CODED NOTES)

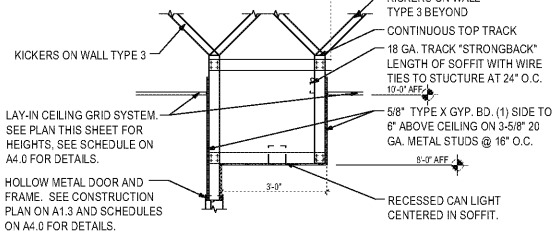
LIGHT FIXTURE LEGEND	
SYMBOL	DESCRIPTION
[Symbol]	8' SUSPENDED SALES LIGHT FIX. (SEE ELEC. DRAWINGS FOR DETAILS)
[Symbol]	4' RECESSED LIGHT FIX. (SEE ELEC. DRAWINGS FOR DETAILS)
[Symbol]	8' SUSPENDED B.O.H. LIGHT FIX. (SEE ELEC. DRAWINGS FOR DETAILS)
[Symbol]	2X4' RECESSED LIGHT FIX. (SEE ELEC. DRAWINGS FOR DETAILS)
[Symbol]	CAN LIGHT FIX. (SEE ELEC. DRAWINGS FOR DETAILS)
[Symbol]	EXTERIOR LIGHT FIX. (SEE ELEC. DRAWINGS FOR DETAILS)
[Symbol]	TRUCK DOCK LIGHT FIX. (SEE ELEC. DRAWINGS FOR DETAILS)
[Symbol]	4' RECESSED VESTIBULE LIGHT FIX. (SEE ELEC. DRAWINGS FOR DETAILS)



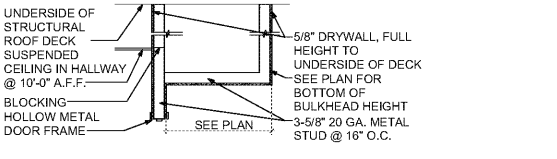
14 ENLARGED RESTROOM REFLECTED CEILING ROOM
SCALE: 1/4" = 1'-0"



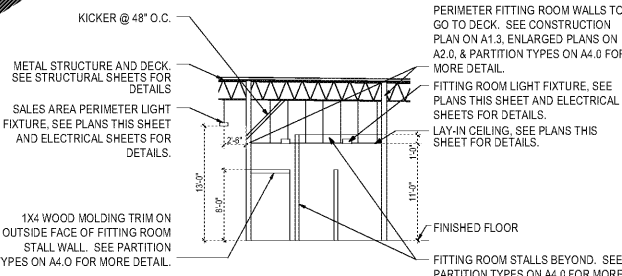
2 ENLARGED CASH ROOM REFLECTED CEILING ROOM
SCALE: 1/4" = 1'-0"



6 TYPICAL SOFFIT DETAIL
SCALE: 1/2" = 1'-0"

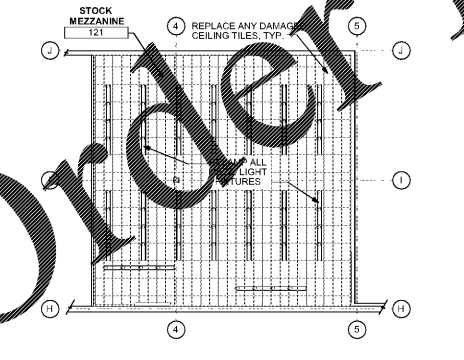


3 TYPICAL SOFFIT DETAIL
SCALE: 1/2" = 1'-0"



4 FITTING ROOM LIGHT FIXTURES
SCALE: 1/8" = 1'-0"

9 REFLECTED CEILING PLAN
SCALE: 1/16" = 1'-0"



5 REFLECTED CEILING MEZZANINE PLAN
SCALE: 1/16" = 1'-0"

William J. Fearon Architects
ARCHITECTS
601 Chapel Avenue East
Cherry Hill, New Jersey 08034
P 856.428.9877
F 856.428.6319
W wjfearon.com

WILLIAM J. FEARON
ARCHITECT
DATE: 02/22/16
William J. Fearon AIA
VA 017851

CLIENT & PROJECT
Burlington
BURLINGTON STORES, INC.
1830 ROUTE 130 NORTH
BURLINGTON, NEW JERSEY
08016

INTERIOR TENANT IMPROVEMENT
FOR BURLINGTON STORES AT
**MANASSAS, VA
STORE #188**
SUDLEY TOWN PLAZA
7885 SUDLEY ROAD
MANASSAS, VA 20109
PRINCE WILLIAM COUNTY

DISTRIBUTION: DATE:
0 PERMIT SUBMISSION 02/22/2016

PROJECT INFO:
PROJECT NUMBER:
9333.10
DRAWN: JMD
PPW: JMD
CHECKED:
JMD

NOTE & COPYRIGHT:
CONTRACTORS SHALL VERIFY EXISTING CONDITIONS AND CORRELATE DIMENSIONS PRIOR TO PROVIDING THE WORK. DETAILS IN THESE DRAWINGS AND SHALL PROMPTLY NOTIFY THE ARCHITECT OF ANY DISCREPANCIES. UNAUTHORIZED REPRODUCTION OR OTHER USE OF THIS DRAWING IS PROHIBITED.

DRAWING NAME & TITLE:
REFLECTED CEILING PLAN

Burlington
BURLINGTON STORES, INC.
1830 ROUTE 130 NORTH
BURLINGTON, NEW JERSEY
08016

INTERIOR TENANT IMPROVEMENT
FOR BURLINGTON STORES AT
**MANASSAS, VA
STORE #188**
SUDLEY TOWN PLAZA
7885 SUDLEY ROAD
MANASSAS, VA 20109
PRINCE WILLIAM COUNTY

DISTRIBUTION: DATE:
0 PERMIT SUBMISSION 02/22/2016

PROJECT INFO:
PROJECT NUMBER:
9333.10
DRAWN: JMD
PPW: JMD
CHECKED:
JMD

NOTE & COPYRIGHT:
CONTRACTORS SHALL VERIFY EXISTING CONDITIONS AND CORRELATE DIMENSIONS PRIOR TO PROVIDING THE WORK. DETAILS IN THESE DRAWINGS AND SHALL PROMPTLY NOTIFY THE ARCHITECT OF ANY DISCREPANCIES. UNAUTHORIZED REPRODUCTION OR OTHER USE OF THIS DRAWING IS PROHIBITED.

DRAWING NAME & TITLE:
REFLECTED CEILING PLAN

A1.6