

SYMBOL LEGEND					
DE ICE	SYMBOL	TY.	DE ICE	SYMBOL	TY.
DOOR CONTACT		5	Dome		10
HORN SOUNDER		1	14" Monitor		1
CONTROL PANEL		1	DIGITAL IDEO RECORDER		1
KEY PAD		1	IEI KEYPAD		1
MOTION DETECTOR (Ceiling Mount)		1	EXTERIOR DOME CAMERA (Additional camera for dual drive-thru order design)		5 1
GLASS BREAK		2	STROBE LIGHT		1
HOLD UP BUTTON (Additional button for 2nd drive-thru window design)		1	PIE O		1

POPEYES MATERIAL LIST

CAMERAS

A-CAMERA: 5 OR 6 LOCATIONS (LOCATIONS W/OUTDOOR CAMERAS)
 2 OR 3 GROUND ISOLATION TRANSFORMERS
 LTC 2640/20-30 SERIES CAMERA W/ 3.5-8MM VARIOFICAL AUTOIRIS LENS
 TC 8340A SERIES OUTDOOR HOUSING
 TCG21FH POLE MOUNT ADAPTER
 BNC CONNECTORS FOR FLENUM CABLE
 FLEX CONDUIT FOR OUTDOOR CAMERAS RUN INSIDE POLE FOR CABLING

INDOOR CEILING MOUNT IN TINTED DOME
 NOTE: FASTEN SCREW IN CEILING FOR DOME SO NOT EASILY DROPPED OUT OF TILE LTC 2640/20-30 SERIES CAMERA W/ 3.5MM-8MM VARIOFICAL AUTOIRIS LENS
 TC 8340HTI INDOOR TINTED DOME
 BNC CONNECTORS FOR FLENUM CABLE

OFFICE AREA

BAC-BURGLAR ALARM CONTROL: VISTA 208EUL
 D-VCR LOCK BOX: TC3922 SERIES
 E-VCR: LTC 3924 SERIES PLACE ON SECURITY LOCK FOR NO TAMP
 F-MONITOR: LTC 2615/60 SERIES
 ALTY48: 8 POSITION POWER SUPPLY
 QUICK REFERENCE SHEETS
 ALARM INSTRUCTION SHEET TO BE MOUNTED ON WALL IN EMPLOYEE ONLY AREA CLOSEST TO KEYPAD OR IN OFFICE AREA PER CUSTOMER INSTRUCTION
 VCR INSTRUCTION SHEET (2) 1-RECORD-TO BE MOUNTED ON WALL CLOSEST TO VCR

FOR LOCATIONS WITH 4 OR MORE CAMERAS: ADD MULTIPLEXER LTC 2640/20-30 PLACE ON SECURITY LOCK FOR NO TAMP
 FOR LOCATIONS WITH 4 CAMERAS OR LESS: ADD VIDQUAD 4 CHANNEL LTC 2272/60

HUB: HOLD UP BUTTON 441494 SERIES LATCHING HUB
 FRYER/PREP AREA

SL STROBE LIGHT-AS SL-401B-BLUE STROBE MOUNT BEHIND MENU BOARD, IT WILL FLASH CONTINUOUSLY WHILE BACK DOOR IS OPEN

S: SOUNDER-AS-PAL328N-LOW TONE SOUNDER MOUNT WITH STROBE BEHIND MENU BOARD, IT WILL SOUND WHEN BACK DOOR IS OPENED, MANAGER WILL SILENCE ST SOUNDER AT KEYPAD AFTER 1 TONE

MD: MOTION DETECTOR-AP 663 PIR-360 MOTION MOUNT IN STOVE AREA TO GET AREA FROM DRIVE-UP WINDOW AND GENERAL REAR AREA

LOBBY/PERIMETER AREA/BACK OF HOUSE
 KP: KEYPAD-MOUNT 40" AFF WALL ENTERING KITCHEN AREA FROM LOBBY

2-GB: FG 1025 GLASS BREAK-LOBBY GLASS ONE EACH SIDE OF BUILDING SEE DRAWING FOR DEVICE PLACEMENT

3 OR 4-C: B4039 CONTACT-ALL EXTERIOR DOORS BACK DOOR CONTACT TO ACT AS ALARM POINT FOR BACK DOOR ALARM-24 HOUR LOCAL POINT-SOUNDER 4 BLUE STROBE TO ACTIVATE WHEN BACK DOOR IS OPEN

1 OR 2-HUB: 3050CT SERIES LATCHING HUB IN COOLER/FREEZER-MOUNT 18" AFF ON HINGE SIDE OF DOOR SUB UP IN CONDUIT

1-POC: POINT OF CONNECTION TO NKL SAFE-PIGTAIL PROVIDED BY NKL SAFE
 RELAYS FOR BACK DOOR/POC/ZONE EXPANSION
 TELCO JACK
 WATTS LINE

POPEYES INSTALLATION NOTES

NOTE: PROGRAMMING SEQUENCE SET-UP AT THE NCCC FOR LOCATIONS WITH OUTDOOR CAMERAS

OUTDOOR POLE MOUNT 15" ABOVE FINISHED PAVEMENT
 GROUND ISOLATION TRANSFORMERS

SECURITY CO. TO RUN FLEX CONDUIT INSIDE LIGHT POLES- EC TO RUN CONDUIT FROM RESTAURANT TO BASE OF LIGHT POLE 4 FROM JUNCTION BOX 15" ABOVE FINISHED PAVEMENT ON POLE DRIVE-UP AND SIDE DOOR

A-1: VIEW MAIN ENTRANCE AND SIDE OF BUILDING
 A-2: VIEW SIDE DOOR AREA OPPOSITE SIDE OF BUILDING FROM DRIVE-THRU
 A-3: VIEW BACK DOOR, DRIVE-THRU MENU BOARD 4 REAR AREA
 A-4: VIEW SECOND DRIVE-THRU WINDOW/DUAL ORDER DESIGN

INDOOR CAMERAS
 INDOOR CEILING MOUNT IN TINTED DOME

FASTEN SCREW IN CEILING FOR DOME SO NOT EASILY DROPPED OUT OF TILE

B-1: VIEW DINING SALES COUNTER 4 BEVERAGE COUNTER
 B-2: VIEW DINING FRONT DOORS, RESTROOM AREA 4 SALES COUNTER
 B-3: VIEW SALES COUNTER 4 SAFE AREA
 B-4: VIEW DRIVE-THRU REGISTER 4 WINDOW AREA
 B-5: VIEW MANAGER DESK 4 PREP AREA
 B-6: VIEW FRYERS 4 PREP AREA
 B-7: VIEW COOLER/FREEZER DOORS
 B-8: VIEW BACK DOOR AND MOP SINK AREA
 B-9: VIEW DRY STORAGE 4 SINK AREA

OFFICE AREA
 BAC-BURGLAR ALARM CONTROL-VISTA 208EUL
 D-VCR
 E-VCR
 F-MONITOR

QUICK REFERENCE SHEETS
 ALARM INSTRUCTION SHEET TO BE MOUNTED ON WALL IN EMPLOYEE ONLY AREA CLOSEST TO KEYPAD OR IN OFFICE AREA PER CUSTOMER INSTRUCTION

FOR LOCATIONS WITH 6 OR MORE CAMERAS: ADD MULTIPLEXER LTC 2640/20-30 PLACE ON SECURITY LOCK FOR NO TAMP

FOR LOCATIONS WITH 4 CAMERAS OR LESS: ADD VIDQUAD 4 CHANNEL LTC 2272/60

HUB: HOLD UP BUTTON 441494 SERIES LATCHING HUB
 MANAGER AREA-36" AFF OUT OF SITE FROM FRONT COUNTER DRIVE-THRU WINDOW-18" AFF 4 OUT OF SITE FROM OUTSIDE

FRYER/PREP AREA
 SL: STROBE LIGHT - AS SL-401B-BLUE STROBE MOUNT BEHIND MENU BOARD, IT WILL FLASH CONTINUOUSLY WHILE BACK DOOR IS OPEN

S: SOUNDER-AS-PAL328N-LOW TONE SOUNDER MOUNT WITH STROBE BEHIND MENU BOARD, IT WILL SOUND WHEN BACK DOOR IS OPENED, MANAGER WILL SILENCE ST SOUNDER AT KEYPAD AFTER 1 TONE

MD: MOTION DETECTOR-AP 663 PIR-360 MOTION MOUNT IN STOVE AREA TO GET AREA FROM DRIVE-UP WINDOW AND GENERAL REAR AREA

LOBBY/PERIMETER AREA/BACK OF HOUSE
 KP: KEY PAD-MOUNT 40" AFF WALL ENTERING KITCHEN AREA FROM LOBBY

GB: FG 1025 GLASS BREAK-LOBBY GLASS ONE EACH SIDE OF BUILDING SEE DRAWING FOR DEVICE PLACEMENT

C: B4039 CONTACT-ALL EXTERIOR DOORS
 BACK DOOR CONTACT TO ACT AS ALARM POINT FOR BACK DOOR ALARM-24 HOUR LOCATION POINT-SOUNDER 4 BLUE STROBE TO ACTIVATE WHEN BACK DOOR IS OPEN

HUB: 3050CT SERIES LATCHING HUB IN COOLER/FREEZER-MOUNT 18" AFF ON HINGE SIDE OF DOOR, SUB UP CONDUIT TO PROTECT WIRING FROM CONDENSATION/DAMAGE NO DRIP LOOP AT HUB

POC: POINT OF CONNECTION TO NKL SAFE-PIGTAIL PROVIDED BY NKL SAFE

POPEYES ADD ON MODIFICATION NAMES AND PHONE NUMBERS

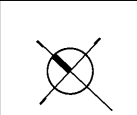
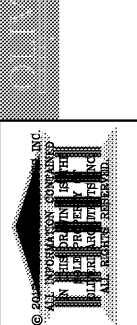
1. INSTALLER PLEASE CONTACT YOUR ADT NCCC PROJECT COORDINATOR FOR ANY ADD-ONS OR MODIFICATIONS TO YOUR JOB. THEY WILL CONTACT THE NATIONAL ACCOUNT MANAGER FOR APPROVALS/PAPERWORK. CONTACT THE NATIONAL ACCOUNT MANAGER.

2. POPEYES PROBLEM RESOLUTION NAMES 4 PHONE NUMBERS

ACKERMAN / LOCKNET:
 NCCC PROJECT COORDINATOR:
 NAME:
 PHONE NUMBER:
 NATIONAL ACCOUNT MANAGER:
 AFC/POPEYES:
 NEW INSTALLS/NEW CONSTRUCTION MANAGER
 EXISTING SITES/RENOVATION PROJECTS/FACILITIES MANAGER
 LOSS PREVENTION DIRECTOR:

REVISIONS	BY

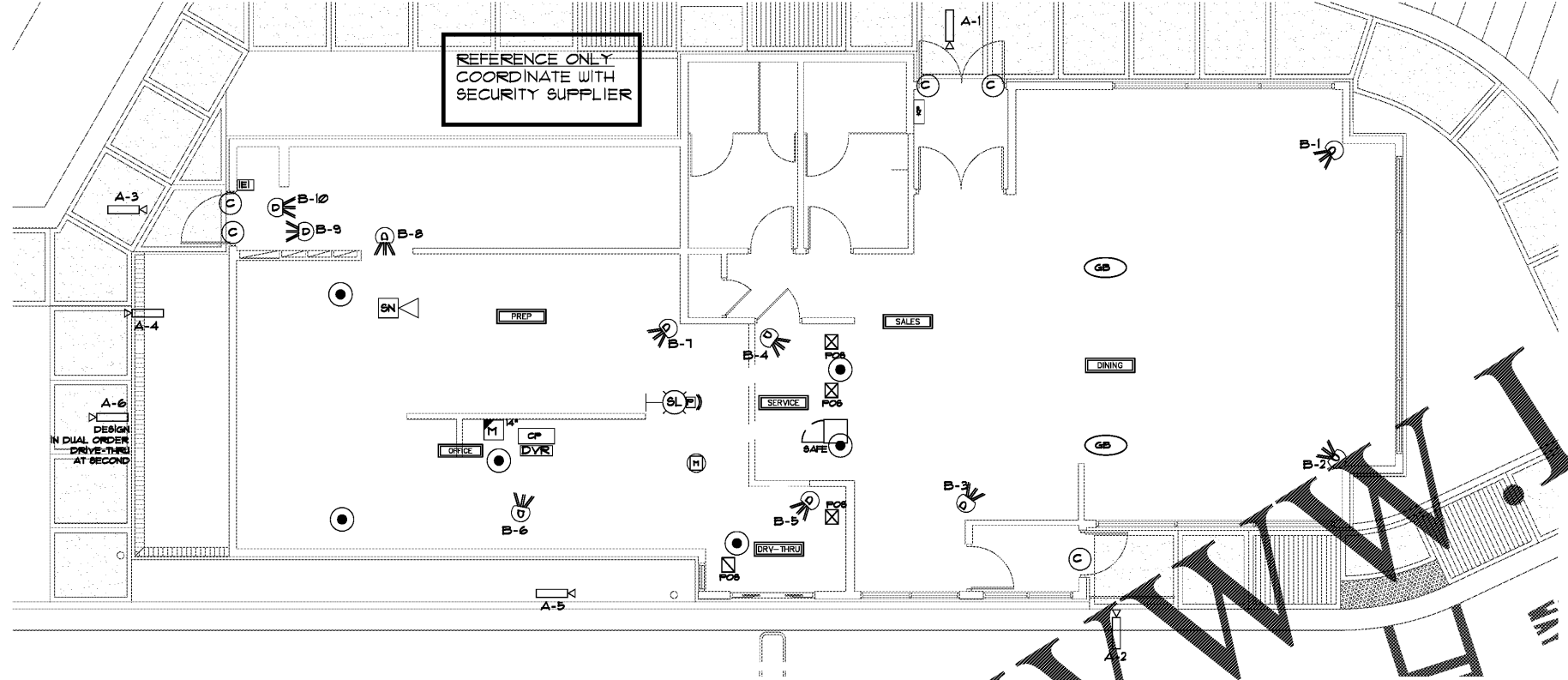
Member of the American Institute of Architects
 200 Peachtree Street, N.E., Suite 1000
 Atlanta, Georgia 30303
 Phone: 404.525.7811 Fax: 404.525.7812
 www.alvarezarchitects.com



WILLIAM O. RITOLA PE
 License No. 33767
 State of Georgia
 Mechanical
 Copyright: 2017 Project No. 17074

New Free Standing Building for
POPEYES
 US Highway 29 & Nease Drive
 Athens, Georgia

Date:	11. 07. 17
Scale:	AS NOTED
Project Mgr:	DG
Drawn:	IT/WR
Job:	17-083
Sheet	E5



POPEYES INSTALLATION ACCEPTANCE FORM CHECKLIST

FOR INSTALL SITE MODIFICATIONS IE DE ICE PLACEMENT CHANGES FROM BLUEPRINT, HAVE CUSTOMER INITIAL MODIFY PER SITE OPTION TO SHOW APPROVAL

CAMERAS

DESCRIPTION	YES	NO	MODIFY PER SITE
A-CAMERA FOR LOCATIONS WITH OUTDOOR CAMERAS			
OUTDOOR POLE MOUNT 15 ABO E FINISHED PAVEMENT			
GROUND ISOLATION TRANSFORMERS			
ADT TO RUN CONDUIT INSIDE LIGHT POLES-EC TO RUN CONDUIT FROM RESTAURANT TO BASE OF LIGHT POLE MOUNT UNCTION BOX 15 ABO E FINISHED PAVEMENT ON POLE			
A-1 IEW DRI E-UP AND SIDE DOOR			
A-2 IEW BACK DOOR, MENU BOARD REAR AREA			
A-3 IEW SIDE DOOR AREA OPPOSITE SIDE OF BUILDING FROM DRIVE-THRU			
B-CAMERA FOR LOCATIONS WITH INDOOR CAMERAS INDOOR CEILING MOUNT IN TINTED DOME			
FASTEN SCREW IN CEILING FOR DOME SO NOT EASILY DROPPED OUT OF TILE			
B-1 IEW FRONT DOORS, RESTROOM AREA			
B-2 IEW DRIVE-THRU REGISTER WINDOW AREA			
B-3 IEW SALES COUNTER 4 SAFE AREA			
B-4 IEW BACK DOOR COOLER FREEZER AREA			
B-5 3 U			

OFFICE AREA

DESCRIPTION	YES	NO	MODIFY PER SITE
D-VCR LOCK BOX TC3922 SERIES			
E-VCR LTC 3924 SERIES PLACE ON SECURITY LOCK FOR NO TAMP			
QUICK REFERENCE SHEETS			
ALARM INSTRUCTION SHEET TO BE MOUNTED ON WALL IN EMPLOYEE ONLY AREA CLOSEST TO KEYPAD OR IN OFFICE AREA PER CUSTOMER INSTRUCTION			
VCR INSTRUCTION SHEET (2) 1-RECORD-TO BE MOUNTED ON WALL CLOSEST TO VCR			
FOR LOCATIONS WITH 4 OR MORE CAMERAS ADD MULTIPLEXER			
LTC 2640/20-30 PLACE ON SECURITY LOCK FOR NO TAMP			
FOR LOCATIONS WITH 4 CAMERAS OR LESS			
HUB HOLD UP BUTTON 441494 SERIES LATCHING HUB			
MANAGER AREA-36" AFF OUT OF SITE FROM FRONT COUNTER			
DRIVE-THRU WINDOW-18" AFF OUT OF SITE FROM OUTSIDE			

LOBBY PERIMETER AREA BACK OF HOUSE

DESCRIPTION	YES	NO	MODIFY PER SITE
KP KEYPAD-MOUNT 40" AFF WALL ENTERING KITCHEN AREA FROM LOBBY			
GB FG 1025 GLASS BREAK-LOBBY GLASS ONE EACH SIDE OF BUILDING SEE DRAWING FOR DEVICE PLACEMENT			
C B4039 CONTACT-ALL EXTERIOR DOORS			
BACK DOOR CONTACT TO ACT AS ALARM POINT FOR BACK DOOR ALARM-24 HOUR LOCAL POINT-SOUNDER 4 BLUE STROBE TO ACTIVATE WHEN BACK DOOR IS OPEN			
POC POINT OF CONNECTION TO NKL SAFE-PIGTAIL PROVIDED BY NKL SAFE			
FRYER/PREP AREA			
SL STROBE LIGHT-AS SL-401B-BLUE STROBE MOUNT BEHIND MENU BOARD, IT WILL FLASH CONTINUOUSLY WHILE BACK DOOR IS OPEN			
S SOUNDER-AS-PAL328N-LOW TONE SOUNDER MOUNT WITH STROBE BEHIND MENU BOARD, IT WILL SOUND WHEN BACK DOOR IS OPENED, MANAGER WILL TONE SILENCE SOUNDER AT KEYPAD AFTER 1 TONE			
MD MOTION DETECTOR-AP 663 PIR-360 MOTION MOUNT IN STOVE AREA TO GET AREA FROM DRIVE-UP WINDOW AND GENERAL REAR AREA			

ELECTRICAL REQUIREMENTS

ELECTRICAL SUPPLY ALL 120 VAC FOR CAMERA SYSTEM AND BURGULAR ALARM SYSTEM
 SUPPLY 120 VAC FOR ALL CCTV HEAD END EQUIPMENT.
 SUPPLY 120 VAC FOR BURGULAR ALARM PANEL.
 FOR OUTDOOR CAMERAS ALL TRENCHING, CONDUIT AND PULL STRINGS, AS WELL AS A BACK BOX MOUNTED ON THE POLE FOR ELECTRICAL AND COAX CONNECTIONS.
 SECURITY CO. SUPPLY AND INSTALL ALL SECURITY EQUIPMENT RUN ALL LOW VOLTAGE CABLE FOR THE SECURITY SYSTEM SET UP, TEST AND TRAIN ON CCTV AND BURGULAR ALARM SYSTEMS. SPECIFY ALL LOCATIONS OF DEVICES.

