

ROOM NAME	AREA	WATTAGE		TOTAL WATTAGE	LAMP TYPE	BALLAST QUANTITY	BALLAST WATTAGE	ACTUAL WATTAGE USED
		ALLOWED PER SQUARE FOOT	ALLOWED					
DINING AREA	3323	2.1	2797.3		TYPE 'C'	9	39	261
					TYPE 'LL1'	13	15	195
					TYPE 'LL2'	6	45	270
					TYPE 'LL3'	7	15	105
					TYPE 'LL4'	35	29	1015
RESTROOM	206	0.9	184.5		TYPE 'LL4'	12	29	348
KITCHEN	843	1.2	843		TYPE 'A'	3	86	255
TOTALS	2561		3784.8					2449

COMPLIES BY 1335.8

### SHEET NOTES

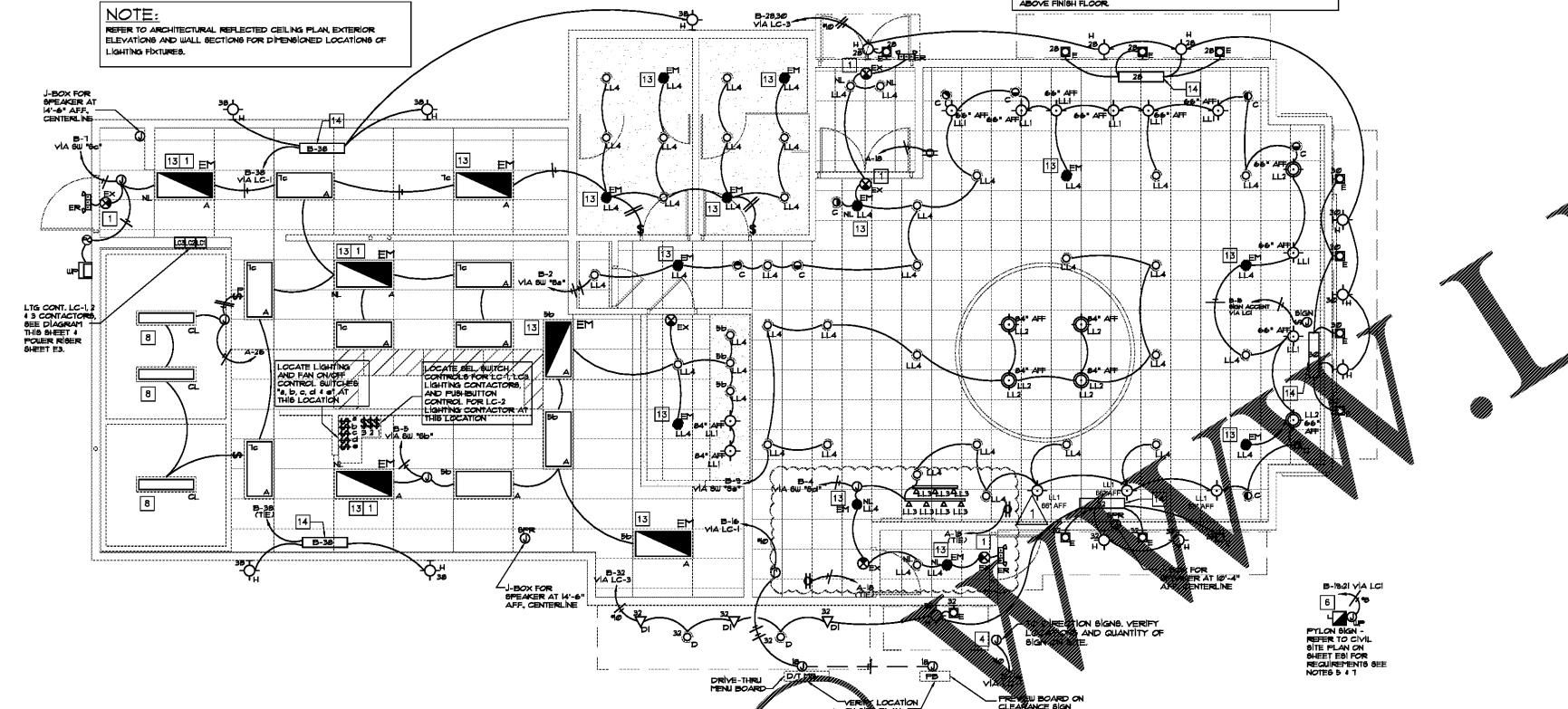
- ALL "EX" EMERGENCY & EXIT LIGHTING FIXTURES SHALL BE CONNECTED AHEAD OF ROOM/AREA SWITCHES PER NATIONAL ELECTRICAL CODE (NEC) ARTICLE 708.12(F).
- VERIFY THE EXACT LOCATION OF SIGNS, AND FACIA BOXES BEFORE INSTALLATION OF JUNCTION BOXES.
- HOTTERNS MAY BE COMBINED AS ALLOWED BY THE NATIONAL ELECT. CODE ALL CONDUIT SHALL BE SIZED PER THE 2011 NEC.
- ELECTRICAL CONTRACTOR SHALL VERIFY EXACT SIGN(S) WIRING REQUIREMENTS WITH THE SIGN SUPPLIER PRIOR TO SUBMITTING A BID FOR THE ELECTRICAL.
- ELECTRICAL CONTRACTOR SHALL VERIFY THE LOCATION OF THE PYLON SIGN. REFER TO SITE PLAN ESI FOR REQUIREMENTS.
- PROVIDE 2P/30A NEMA 3R, RIBBED DISCONNECT SWITCH W/ LIQUID-TIGHT FLEXIBLE CONNECTION TO PYLON SIGN. RUBE SIZE PER SIGN MFR'S RECOMMENDATION. REFER TO SITE PLAN ESI FOR REQUIREMENTS.
- THE BUILDING SIGNAGE, PYLON SIGN, FACIA LIGHTING, BUILDING SIGN LIGHTING, DRIVE-THRU MENU BOARD AND SITE LIGHTING SHALL BE WIRED THRU THE LIGHTING CONTRACTORS FOR AUTOMATIC & MANUAL CONTROL.
- PROVIDE RACEWAY WIRING AND LAMPS (NOTES 8) FOR ALL LIGHT FIXTURES FURNISHED BY THE FREEZER/COOLER STORAGE UNIT. LIGHT FIXTURES SHALL BE INSTALLED BY ELECTRICAL CONTRACTOR. COORDINATE THE INSTALLATION OF SWITCHES AND PLATES WITH THE EQUIP. SUPPLIER.
- J-BOX ON ROOF FOR FRIERED HOOD LIGHTS.
- TO VERIFY EXACT ELECTRICAL REQUIREMENTS FOR SIGNAGE, CONTACT SIGNAGE SUPPLIER PRIOR TO INSTALLATION. G.C. TO PROVIDE FINAL ELECTRICAL HOOD.
- NOT USED.
- ROUTE CIRCUIT VIA EXTERIOR/SIGN LIGHTING CONTRACTOR (SEE CONTROL SCHEMATIC DIAGRAM SHEET E1).
- LIGHT FIXTURE TO BE EQUIPPED WITH EMERGENCY LIGHTING BATTERY PACK 10000 LUMENS MINIMUM. THE BATTERY PACK SHALL BE WIRED AHEAD OF ANY SWITCHES.
- 36"x8"x8" SHEET METAL GUTTER FOR BALLAST AND CAPACITORS FOR FIXTURES "H". MOUNT GUTTER ABOVE CEILING TO INTERIOR STUDS.

### GENERAL NOTES:

- PROVIDE ALL FLOURESCENT FIXTURES WITH BALLAST DISCONNECTING MEANS PER NEC.
- "NL" DESIGNATION INDICATES FIXTURE TO BE NIGHT LIGHT, CIRCUITED HOT FOR CONTINUOUS OPERATION.
- PROVIDE RED ILLUMINATED SWITCH FOR HOOD EXHAUST FAN CONTROL AND LIGHTS. PROVIDE TYPICAL ABOVE SWITCH IDENTIFYING HOOD USE.
- EQUIPMENT LOCATIONS INDICATED ARE APPROXIMATE. COORDINATE EXACT LOCATIONS AND REQUIRE CLEARANCES WITH EQUIPMENT SUPPLIER AND ALL TRADES PRIOR TO INSTALLATION.
- THE CONTRACTOR SHALL FURNISH AND INSTALL ALL THE EQUIPMENT INDICATED WITHIN THESE ROOMS UNLESS OTHERWISE NOTED. VERIFY LOCATION AND DIMENSIONS IN THE FIELD PRIOR TO FABRICATION AND / OR INSTALLATION.
- ALL PENETRATIONS SHALL BE AT THE CONTRACTOR'S EXPENSE. COORDINATE WITH OWNER'S ARCHITECT CONTRACTOR SO AS NOT TO VOID ANY EXISTING ROOF WARRANTIES.
- THE ENTIRE INSTALLATION SHALL BE GUARANTEED FREE DEFECTS AND CONTRACTOR SHALL REPAIR AND REPLACE ANY DEFECTIVE MATERIALS OR EQUIPMENT AT NO COST TO THE OWNER FOR A MINIMUM PERIOD OF ONE YEAR FROM THE DATE OF ACCEPTANCE BY ARCHITECT OR OWNER.
- ALL WORK SHALL BE SUBJECT TO THE ACCEPTANCE AND APPROVAL OF THE ARCHITECT AND OWNER. THE ARCHITECT SHALL BE NOTIFIED OF ANY AND ALL DISCREPANCIES BETWEEN FIELD CONDITIONS AND THE CONTRACT DOCUMENTS BEFORE PROCEEDING WITH THAT PORTION OF THE WORK. FAILURE OF PROPER NOTIFICATION DOES NOT RELIEVE THE CONTRACTOR. THE CONTRACTOR SHALL CORRECT ANY AND ALL WORK ARISING FROM SUCH FAILURE TO COORDINATE DISCREPANCIES TO THE SATISFACTION OF THE ARCHITECT WITHOUT ADDITIONAL COST TO THE OWNER.
- COORDINATE ALL EQUIPMENT UTILITY INFORMATION SHOWN ON THIS SHEET WITH THE DUNKIN' BRANDS EQUIPMENT SCHEDULE AND EQUIPMENT MANUFACTURER'S CUT SHEETS.
- ALL JUNCTION BOXES SHOWN ON THIS PLAN ARE TO BE INSTALLED ABOVE THE FINISHED CEILING.
- PROVIDE WOOD BLOCKING BEHIND ALL EXTERIOR LIGHTING FIXTURES COORDINATE WITH GENERAL CONTRACTOR.
- THE CONTRACTOR IS RESPONSIBLE FOR REVIEWING THE LATEST KITCHEN PLANS AND EQUIPMENT CUTS SHEETS FOR PROPER EQUIPMENT LOCATIONS AND CONNECTION REQUIREMENTS PRIOR TO STARTING WORK.
- SPEAKER AND SOUND SYSTEM TO BE PROVIDED AND INSTALLED BY ELECTRICAL CONTRACTOR. LOCATE WALL MOUNT CONTROL IN THE OFFICE. SEE ARCHITECTURAL CEILING PLAN FOR EXACT LOCATION AND CONTROL.

**NOTE:**  
REFER TO ARCHITECTURAL REFLECTED CEILING PLAN, EXTERIOR ELEVATIONS AND WALL SECTIONS FOR DIMENSIONED LOCATIONS OF LIGHTING FIXTURES.

**NOTE:**  
PENDANT AND GRABPOT LIGHTS AT TABLES TO BE MOUNTED 66" ABOVE FINISH FLOOR. GRABPOT LIGHTS AT 7" COUNTER TO BE MOUNTED 84" ABOVE FINISH FLOOR.



### LIGHT FIXTURE SCHEDULE

QTY.	MARK	DESCRIPTION	MANUFACTURER	LIGHT FIXTURE	COLOR	BULBS
15	A	2 x 4 LAY-IN ELECTRONIC BALLAST	COLUMBIA	JT824-332G-FSAI2-3EU	WHITE	(3) F0735
3	CL	COOLER/FREEZER		BY COOLER MANUFACTURER		
2	D	BALCONY RECESSED SOFFIT LIGHT (BY SIGN SUPPLIER/BALCONY)	SECURITY	851-DL-1020H-PP-UH-120	WHITE	(1) M100/LMED
3	DI	SHUTTER UPLIGHT / CUSTOM COLOR CAST ROUND BOX COVER FOR FIXTURE	SECURITY	MIC1001H-EV/RLE0203	EVERGREEN	(1) M100/LMED
12	E	MANSARD WALL MOUNT UNIT	TERON	FNK126Q-120N-JC	CLEAR	(1) 26W
4	EM	EMERGENCY LIGHTING UNIT	EXITRONIX	LL80	WHITE	(2) 5W
3	ER	REMOTE EMERGENCY LIGHTING UNIT	EXITRONIX	LL80H-N4	WHITE	(1) 5W
6	EX	LED EXIT EMERGENCY COMBO	EXITRONIX	VEKUBPULH-30R	WHITE	INCLUDED
42	LL4	6" RECESSED DOWNLIGHT	JUNO	FL642EU-28B-UH	WHITE	26W TRT
7	LL3	PENDENT	HERMITAGE	FLAVORIETY	(2) BLUE (3) AMBER (2) RED	(1) 15W (GU-24)
11	H	GOOSENECK 100MMH - OUTDOOR	HILITE	H811/GU/602-100PH	EVERGREEN	(1) M100/LMED
1	UP	WALL PACK W/ PHOTO CELL (REAR DOOR)	SECURITY	6UP-1020H-DB-MT	Bronze	(1) M100/LMED
8	LL2	PENDENT	HERMITAGE	FP3463B121216		(3) 15W
16	LL1	PENDENT	HERMITAGE	EDJ31111	RED	(1) 15W
9	C	6" RECESSED WALLWASHER	JUNO	FL642EU-26B-UH	WHITE	26W TRIPLE TUBE

### SITE LIGHTING REFER TO SITE LIGHTING PHOTOMETRIC ON SHEET EPI FOR REQUIREMENTS

**NOTE:** VERIFY WIND LOAD TO ENSURE POLE SIZE IS SUFFICIENT.  
 \* LABOR WARRANTY FOR TWO YEARS IS PROVIDED ON ALL PARKING LOT LIGHTING THRU HERMITAGE LIGHTING NATIONAL ACCOUNTS. PLEASE CONTACT HERMITAGE LIGHTING FOR INFORMATION ON LIGHTING PACKAGE. TEL: (800) 264-3383  
 \* NO SUBSTITUTION ALLOWED FOR SPECIFIED LIGHT FIXTURES.

ALL LIGHT FIXTURES LISTED IN THE ABOVE SCHEDULE SHALL BE FURNISHED AND INSTALLED BY THE ELECTRICAL CONTRACTOR, EXCEPT AS NOTED IN PARAGRAPH PART I/C OF ELECTRICAL SPECIFICATIONS.

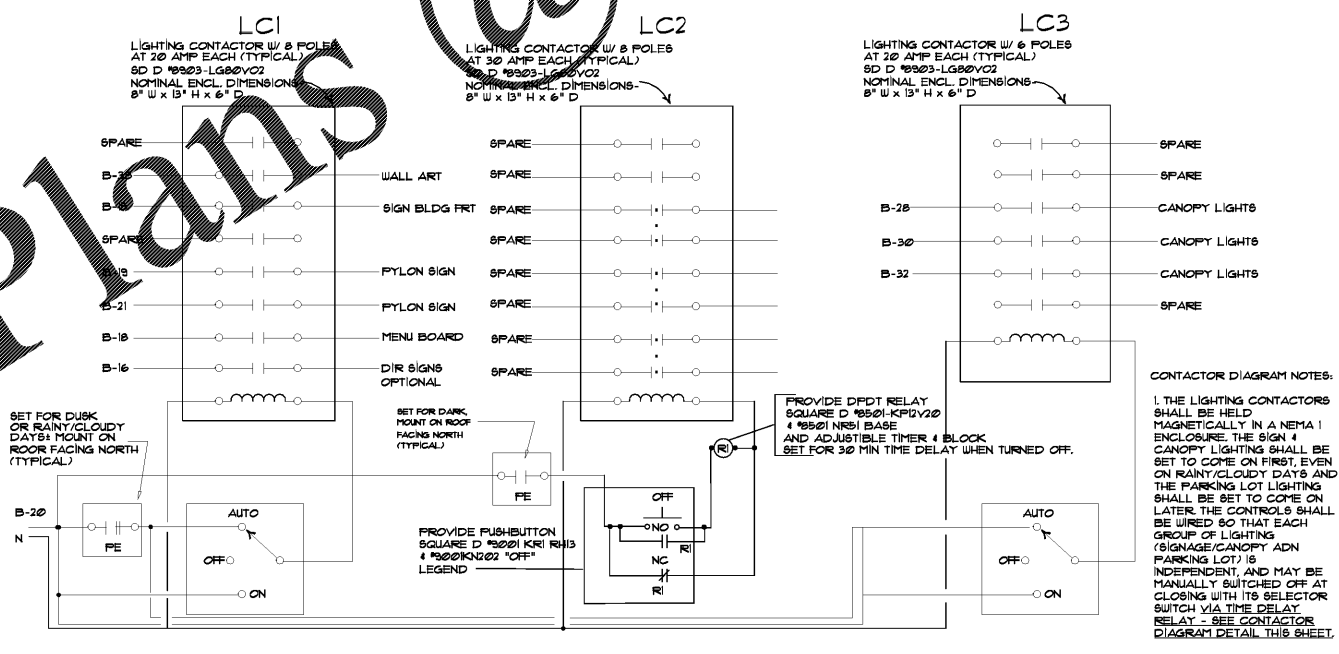
NOMENCLATURE	DEFINITIONS
A2	PATTER #2 ACRYLIC PRISMATIC LENS
1/4 GEB	4 LAMP ELECTRONIC BALLAST E 20% THD ELECTRONIC
CU22	COLD WEATHER BALLAST
FE	FACTORY INSTALLED PHOTOCCELL
M	METAL HALIDE SOURCE

- FIXTURE NOTES:**
- SEE ARCHITECTURAL DETAILS FOR MOUNTING LOCATIONS.
  - ALL OUTLETS FOR LIGHTS SHALL BE SUPPORTED INDEPENDENTLY OF CEILING SYSTEM USING 1/4" ALL THREAD ROD.
  - PROVIDE REMOTE MOUNTED (ON ROOF) PE CELL FOR ALL EXTERIOR FIXTURE, TYPE "UP" NOT ON THE LIGHTING CONTRACTOR.
  - BALLAST LOCATION FOR GOOSE NECKS INSTALLED PER NEC.

### POPEYES RADIO SYSTEM

DESCRIPTION	MAKE	MODEL	QUANTITY
RECESSED SPEAKERS (DINING)	BOBE	MODEL #6, BLACK	4
RECESSED SPEAKERS (KITCHEN)	MIZAK	MES 8-ST3, BLACK	2
OUTDOOR BOX SPEAKERS	QU	161	4
AMPLIFIER	PARSO	PU 330 BSM	1
SPEAKER SUPPORT	QUAH	680-2	2
SPEAKER BACKCAN	QUAH	ERD-8	2
CABLE CONNECTORS, HARDWARE AND SHELF	VARECUS	VARECUS	1
AREA VOLUME CONTROL	QUAH	OC-10	1
RECEIVER	ECHO STAR	3000	1
DISH	CHANNEL MASTER	16 ANTENNA	1

\* NUMBER OF SPEAKERS MAY VARY DUE TO DESIGN CONSIDERATIONS  
 \*\* LABOR INCLUDES INSTALLATION OF 1/2" OF 12 GAUGE SPEAKER WIRE.  
 SEE THE NATIONAL ACCOUNT VENDOR LIST FOR EQUIPMENT SUPPLIER.



### CONTROLLER DIAGRAM NOTES:

- THE LIGHTING CONTRACTORS SHALL BE HELD MAGNETICALLY IN A NEMA 1 ENCLOSURE. THE SIGN & CANOPY LIGHTING SHALL BE SET TO COME ON FIRST, EVEN ON RAINY/CLOUDY DAYS AND THE PARKING LOT LIGHTING SHALL BE SET TO COME ON LATER. THE CONTROLS SHALL BE WIRED SO THAT EACH GROUP OF LIGHTING (SIGNAGE/CANOPY AND PARKING LOT) IS INDEPENDENT AND MAY BE MANUALLY SWITCHED OFF AT CLOSING WITH ITS SELECTOR SWITCH VIA THE DELAY RELAY. SEE CONTRACTOR DIAGRAM DETAIL THIS SHEET.

### ELECTRICAL LIGHTING PLAN

SCALE: 3/16" = 1'-0"

REVISIONS	BY
02.16.18	WR

**OLIVERI ARCHITECTS**  
 Member of the American Institute of Architects  
 300 Peachtree Street, NE, Suite 2000  
 Atlanta, GA 30308  
 Phone: 404.778.7811 Fax: 404.778.7812  
 www.oliveriarchitects.com

**GEORGIA ARCHITECTS INC.**  
 1000 Peachtree Street, NE, Suite 2000  
 Atlanta, GA 30308  
 Phone: 404.778.7811 Fax: 404.778.7812  
 www.georgiaarchitects.com



**WILLIAM O. RITOLA**  
 PROFESSIONAL ENGINEER  
 License No. 33076  
 State of Georgia

**WILLIAM O. RITOLA PE**  
 License No. 33076  
 State of Georgia  
 Copyright © 2017 Project No. 17074

New Free Standing Building for  
**POPEYE'S**  
 US Highway 29 & Necess Drive  
 Athens, Georgia

Date: 11. 07. 17  
 Scale: AS NOTED  
 Project Mgr: DG  
 Drawn: IT/WR  
 Job: 17-083

Sheet  
**E1**