

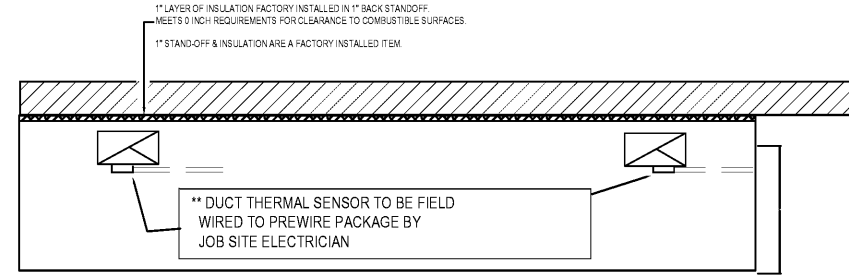
HOOD INFORMATION																	
HOOD NO.	MODEL	LENGTH	MAX COOKING TEMP	TOTAL EXH CFM	EXHAUST PLENUM (RISER(S))				SUPPLY PLENUM				HOOD CONSTRUCTION		HOOD COFFER		
					WIDTH	LENG	DA	CFM	S.P.	TOTAL SUP CFM	WIDTH	LENG	DA	CFM	S.P.	END TO END	ROW
1	2812 BLL	11' 1.00"	500 Deg	1870	8"	11"		555	-0.429"	0					430 SS	ALONE	ALONE

HOOD INFORMATION													
HOOD NO.	TYPE	FILTER(S)		LIGHT(S)		WIRE GUARD	LOCATION	FIRE SYSTEM		ELECTRICAL	SWITCHES	FIRE SYSTEM PIPING	HOOD HANGING WT(LBS)
		QTY	HEIGHT	LENGTH	QTY			TYPE	TYPE				
1	SS Baffle with Handles	1	10"	16"	0							YES	194 LBS

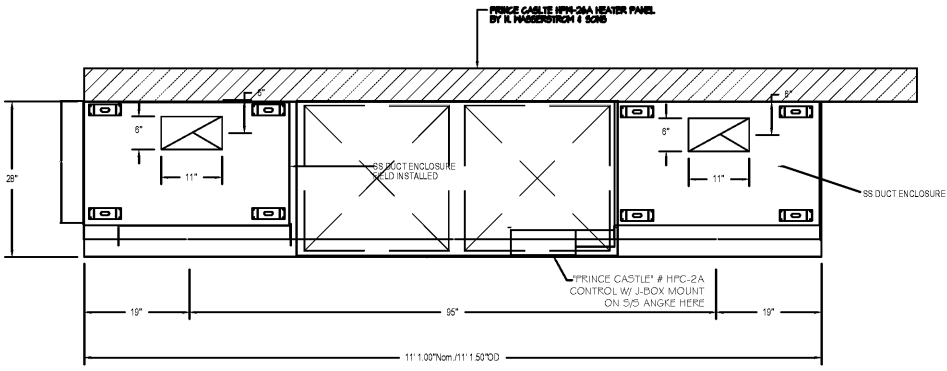
CAPTIVE-AIRE HOODS ARE BUILT IN COMPLIANCE WITH

Intertek
NFPA #96
 NSF
UL 710 & ULC710 STANDARDS
 E.T.L. LISTED 3054804-001

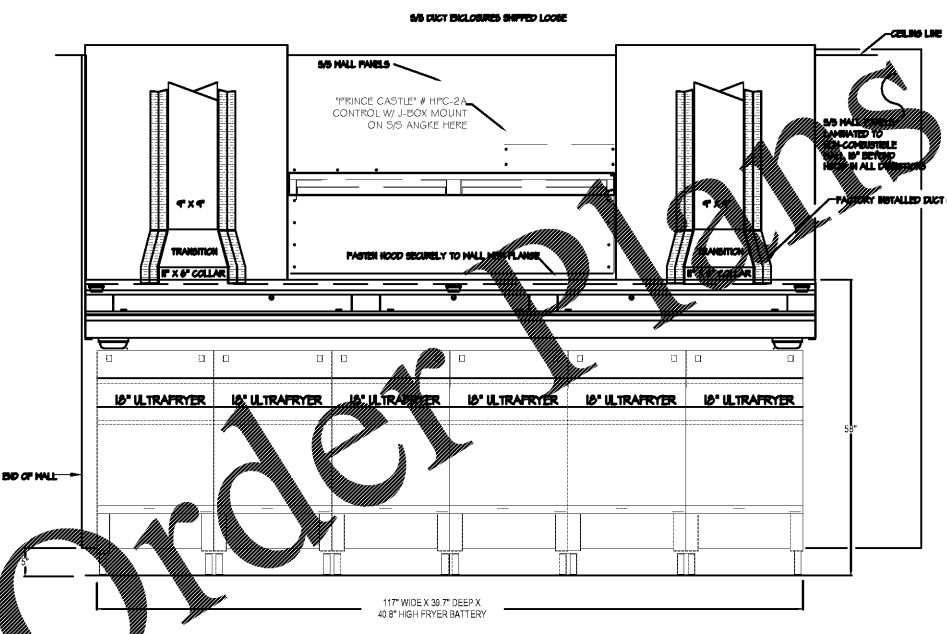
U.L. 710 STRICTLY APPLIES TO TESTED & QUALIFIED LISTED HOODS THAT CERTIFIES THE COMPLETE CONSTRUCTION & ABILITY TO CAPTURE AS NOTED IN THE F.B.C.M. SECT. 507.1 (EXCEPTION #1)



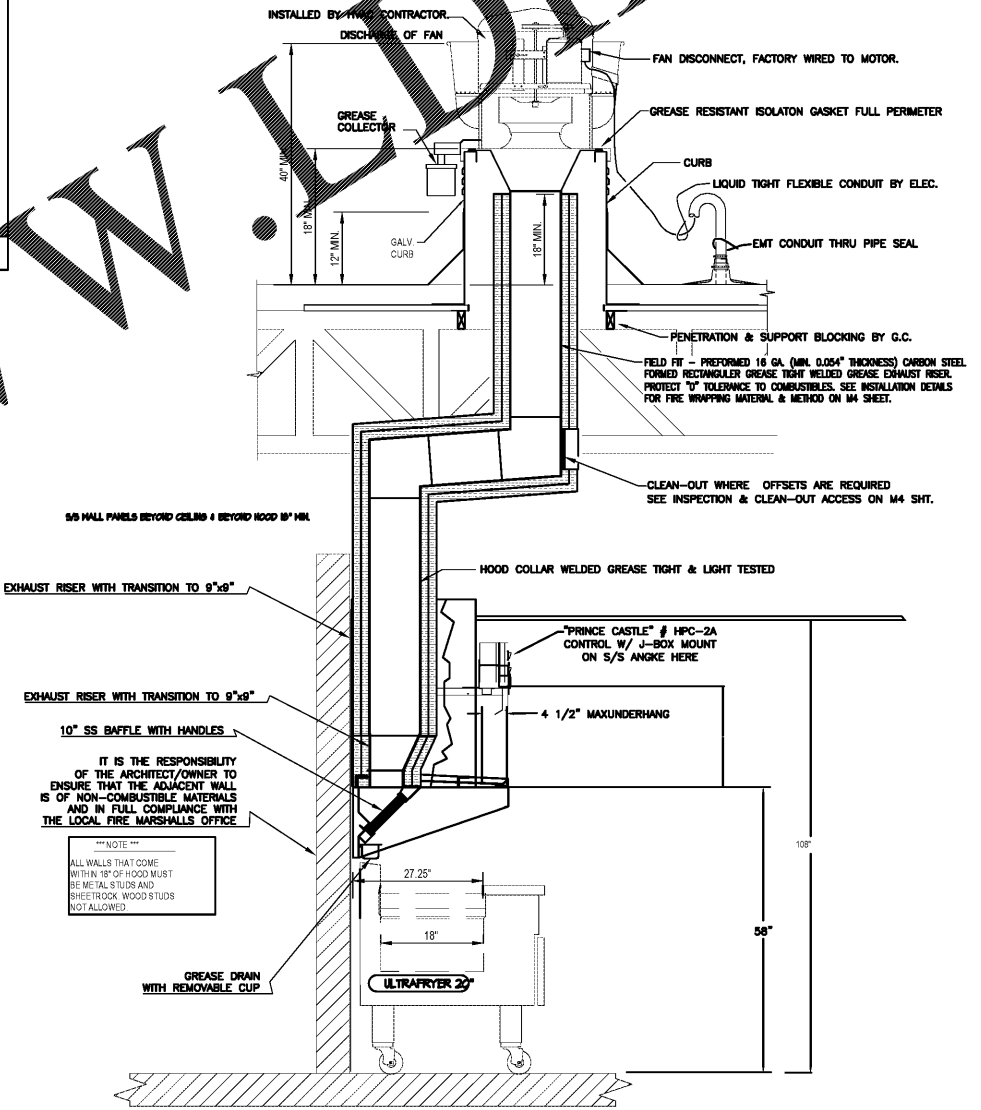
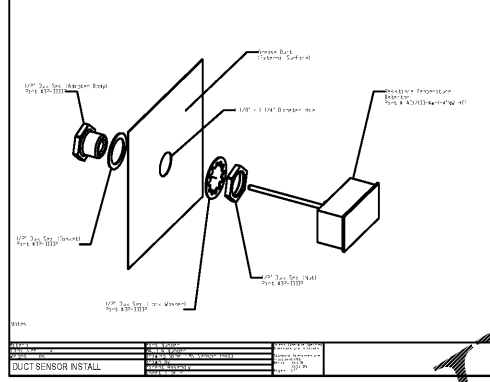
PLAN VIEW - Hood #1 ADDITIONAL FEATURES



PLAN VIEW - Hood #1 11' 1.00" LONG 2812BLL



SECTION VIEW - MODEL 2812BLL
A SECTION
 SCALE NTS



BLL Series Specification

The BLL series hood is a low proximity passover type hood. Hood shall have size, shape and performance as shown on drawings.

Construction shall be type 430 stainless steel with a #3 or #4 polish where exposed. All seams shall be welded and have stainless steel on exposed surfaces. Unexposed surfaces shall be constructed of aluminum steel. Individual component construction shall be determined by manufacturer and ETL. Construction shall be dependent on the structural application to minimize distortion and other defects. All seams, joints and penetrations of the hood enclosure to its lower outermost perimeter that directs and captures grease-laden vapor and exhaust gases shall have a liquid-tight continuous external weld in accordance with NFPA 96. Hood shall be wall type with provisions to screw to back wall.

Ventilator shall be furnished with UL classified aluminum baffle filters, supplied in size and quantity as required by ventilator. The filters shall extend the full length of the hood and the filter panels shall not be more than 6" in width.

The hood manufacturer shall supply complete computer generated submittal drawings including hood section view(s) and hood plan view(s). These drawings must be available to the engineer, architect and owner for their use in construction, operation and maintenance.

Exhaust duct collar to be 4" high with 1" flange. Duct sizes, CFM and static pressure requirements shall be as shown on drawings. Static pressure requirements shall be precise and accurate; air velocity and volume information shall be accurate within 1-ft increments along the length of the ventilator.

The hood shall have:
 -A sloped grease drain system which shall be an enclosed integral part of the hood back with an exposed, removable 1/2 pint grease cup to facilitate cleaning.
 -Low profile design to allow plate shelf and passover design.

The hood shall be ETL Listed as 'Exhaust Hood Without Exhaust Damper', ETL Sanitation Listed and built in accordance with NFPA 96. The hood shall be listed for 400° F cooking surfaces at 110 CFM/ft.

REVISIONS	
DESCRIPTION	DATE
1	3-9-13

CAPTIVE

PIEDMONT AREA OFFICE

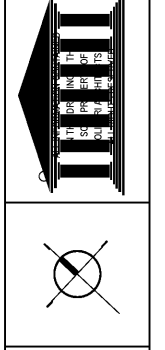
www.captiveaire.com

495 BUCKHURST DR., KERNERSVILLE, NC 27284 PHONE (336) 999-8454 FAX (336) 999-0418 EMAIL reg30_captiveaire.com

REVISIONS	BY

OLIVERI ARCHITECTS

Member of the American Institute of Architects
 32707 US Hwy 19 • Palm Harbor, FL 34684
 Phone: 727-781-7825 • Fax: 727-781-6823
 www.oliveriarchitects.com



Joseph L. Oliveri, AIA
 State of Georgia
 License #0015162

New Free Standing Building for
POPEYE'S
 US Highway 29 & Nease Drive
 Athens, Georgia

Date: 07.25.17
 Scale: AS NOTED
 Project Mgr: DG
 Drawn:
 Job: 17-083

Sheet
M3

Order Plans

Shane R.
Hamilton PE
 CONSULTING ENGINEER

1717 N. Howard Avenue
 Tampa, FL 33607 (813) 251-6246



HOOD DETAILS

SHEET NO.
 1