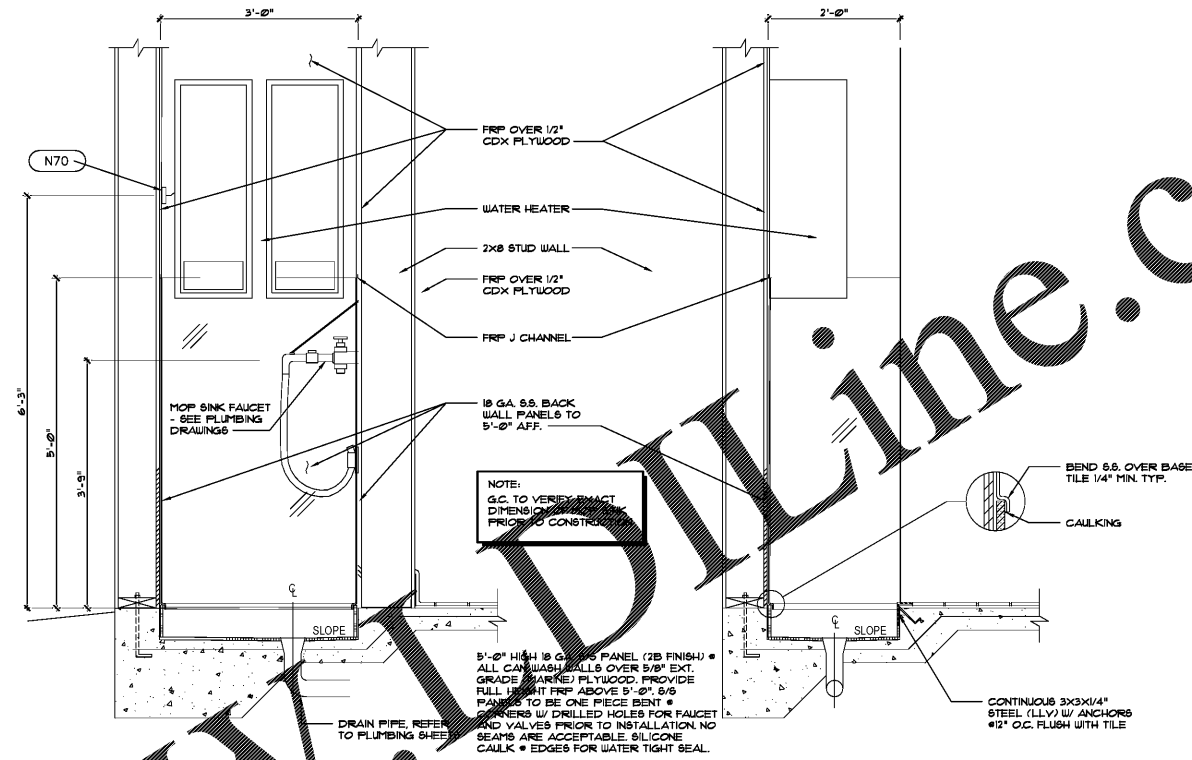
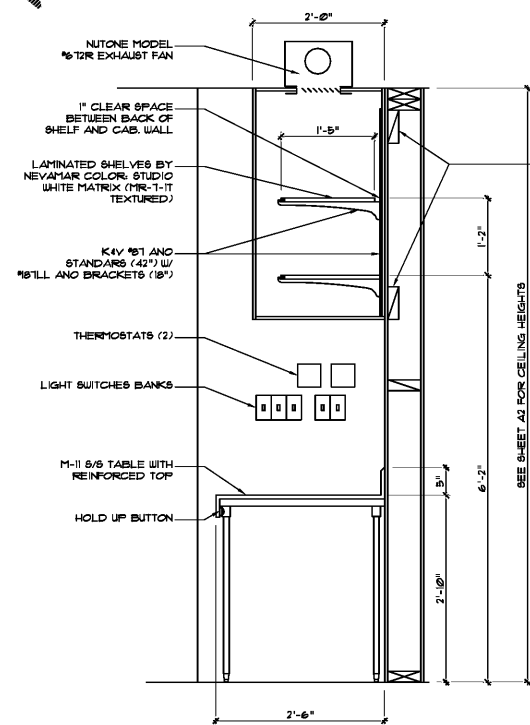


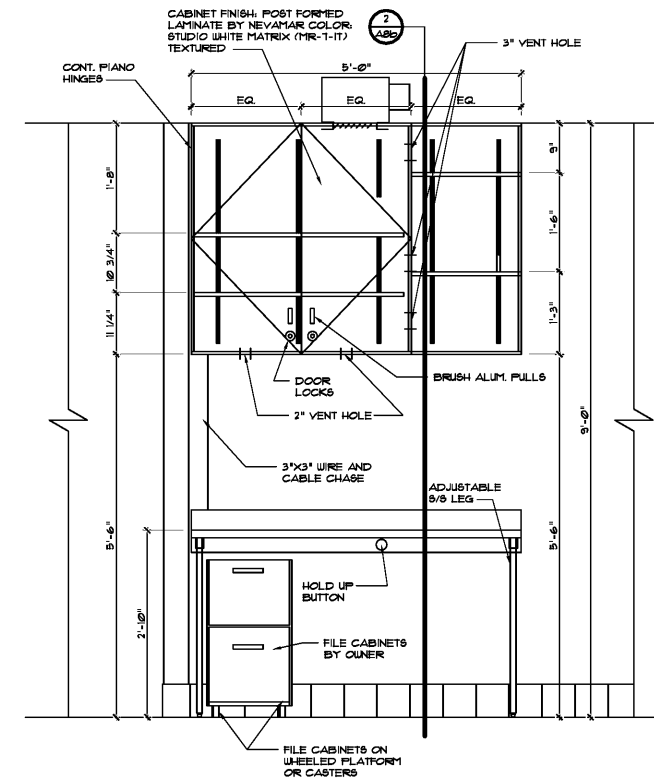
Order Plans @



1 MOP SINK DETAIL
SCALE: 3/4" = 1'-0"



2 OFFICE DESK DETAIL
SCALE: 3/4" = 1'-0"

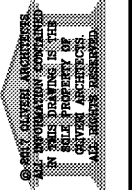


3 OFFICE DESK DETAIL
SCALE: 3/4" = 1'-0"

REVISIONS	BY

OLIVERI ARCHITECTS

Member of the American Institute of Architects
32707 US Hwy 19 • Palm Harbor, FL 34684
Phone 727 781 7525 • Fax 727 781 6923
www.oliveriarchitects.com



Joseph L. Oliveri, AIA
State of Georgia
License No. 000000000

New Free Standing Building for
POPEYE'S
US Highway 29 & Nease Drive
Athens, Georgia

Date: 11. 07. 17
Scale: AS NOTED
Project Mgr: DG
Drawn: DD
Job: 17-083

Sheet
A8b