

REVISIONS	BY

**OLIVERI ARCHITECTS**  
 Member of the American Institute of Architects  
 32707 US Hwy 19 • Palm Harbor, FL 34684  
 Phone 727 781 7525 • Fax 727 781 6923  
 • www.oliveriarchitects.com

ALL INFORMATION CONTAINED  
 HEREIN IS THE PROPERTY OF  
 THE ARCHITECTS AND IS TO BE  
 USED ONLY FOR THE PROJECT  
 SPECIFICALLY IDENTIFIED

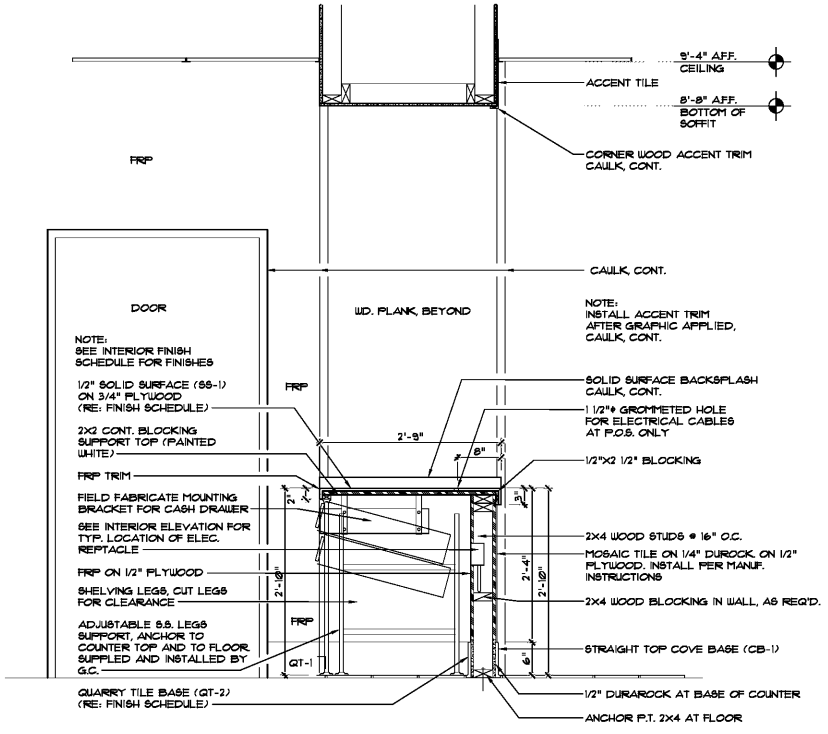


Joseph L. Oliveri, AIA  
 State of Georgia  
 License #6401532

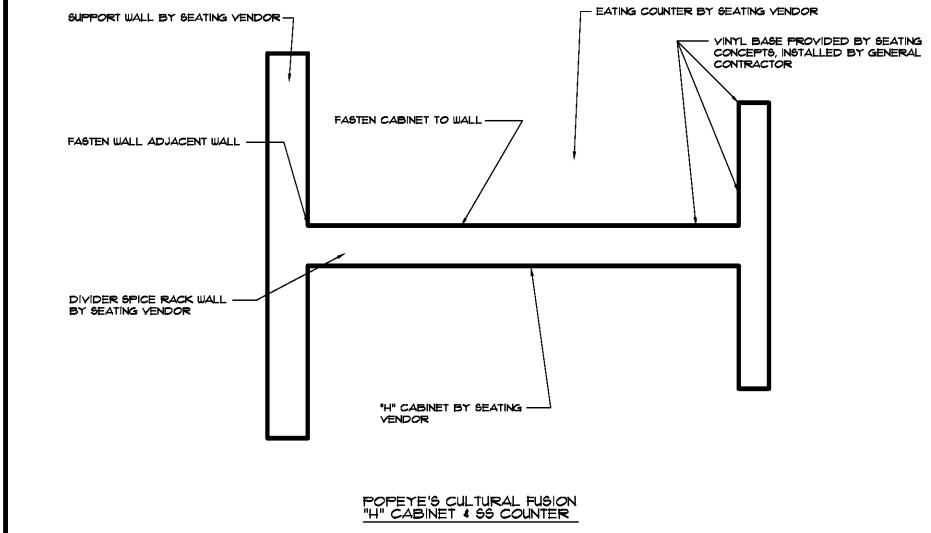
New Free Standing Building for  
**POPEYE'S**  
 US Highway 29 & Nease Drive  
 Athens, Georgia

Date: 11. 07. 17  
 Scale: AS NOTED  
 Project Mgr: DG  
 Drawn: DD  
 Job: 17-083

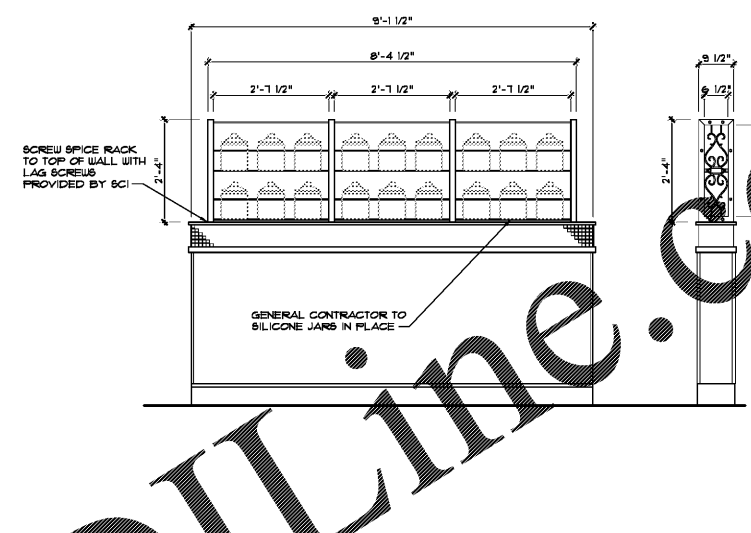
Sheet  
**A8a**



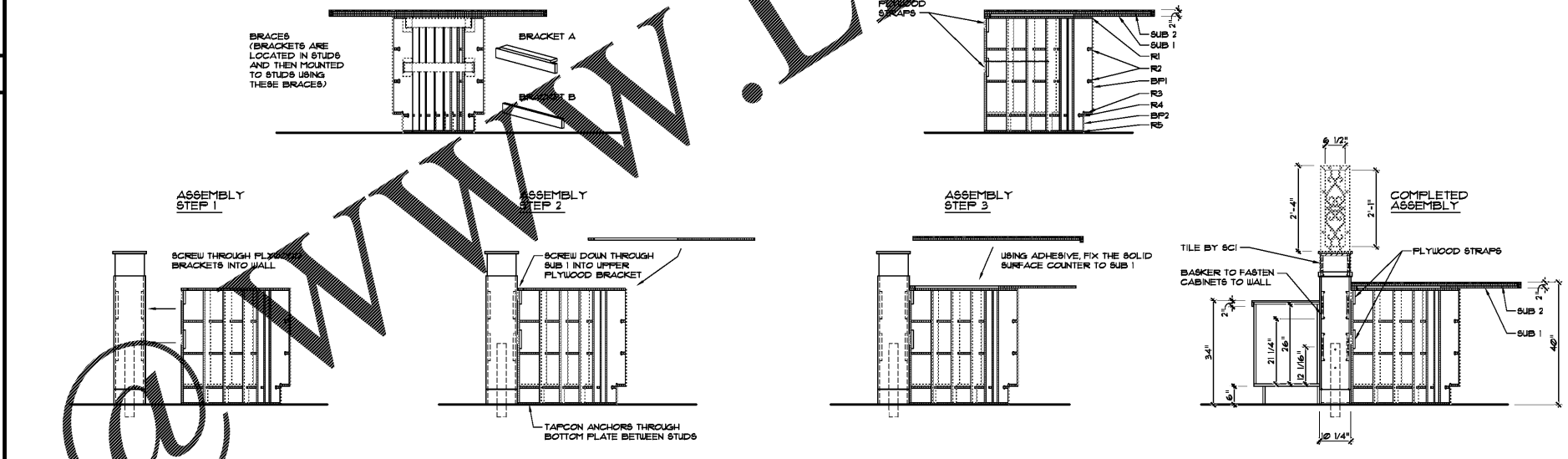
**6 FRONT COUNTER SECTION**  
 SCALE: 3/4" = 1'-0"



**1 'H' TOP VIEW DETAIL**  
 SCALE: 1/2" = 1'-0"



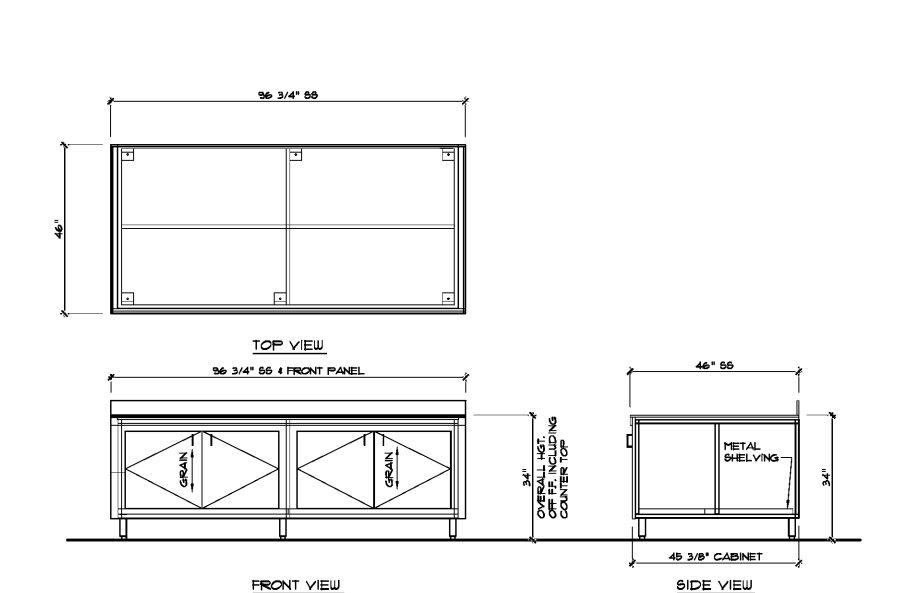
**2 'H' ELEVATION SIMILAR**  
 SCALE: 1/2" = 1'-0"



**3 'H' COUNTER ASSEMBLY - H - SIMILAR - COORDINATE WITH SEATING VENDOR**  
 SCALE: 1/2" = 1'-0"

Order Plans @ WWW.LDOLINE.COM

**4 NOT USED**  
 SCALE: X" = X'-X"



**5 DRINK STATION DETAILS**  
 SCALE: 1/2" = 1'-0"