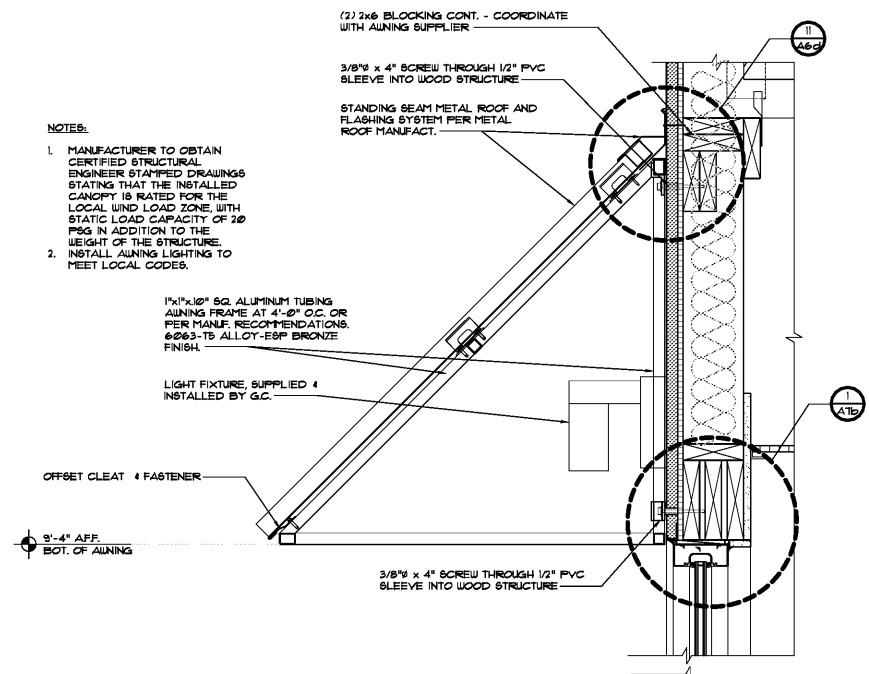
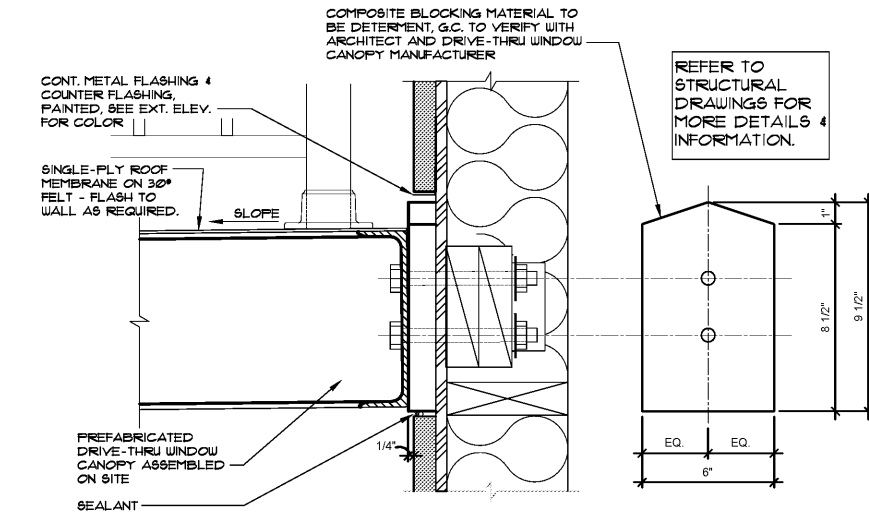


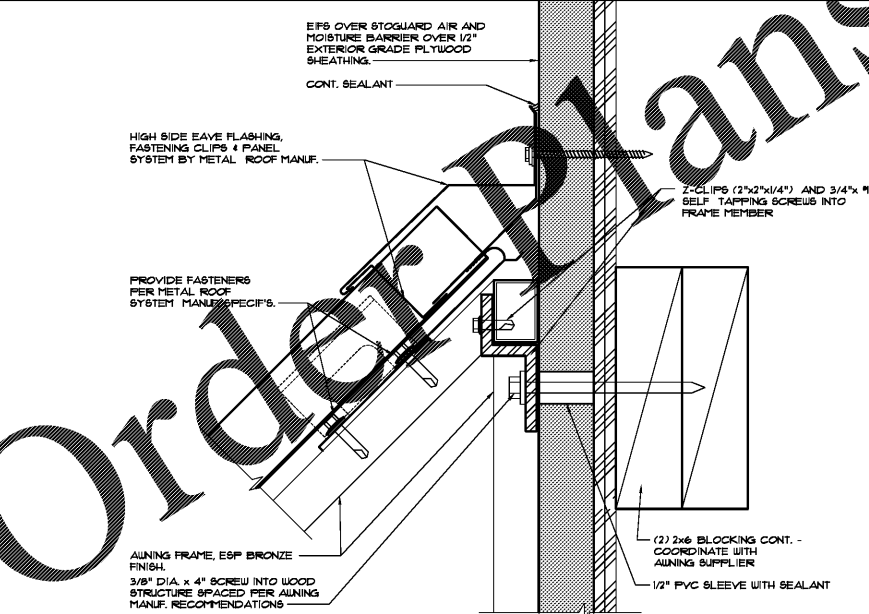
- NOTES:**
1. MANUFACTURER TO OBTAIN CERTIFIED STRUCTURAL ENGINEER STAMPED DRAWINGS STATING THAT THE INSTALLED CANOPY IS RATED FOR THE LOCAL WIND LOAD ZONE WITH STATIC LOAD CAPACITY OF 20 PSF IN ADDITION TO THE HEIGHT OF THE STRUCTURE.
 2. INSTALL AWNING LIGHTING TO MEET LOCAL CODES.



9 DETAIL
SCALE: 1-1/2" = 1'-0"

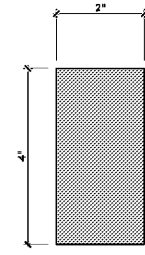


10 DETAIL
SCALE: 3" = 1'-0"

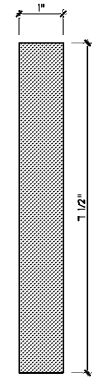


11 DETAIL
SCALE: 6" = 1'-0"

3 EIFS. PROFILE
SCALE: 6" = 1'-0"

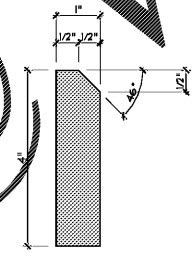


5 EIFS. PROFILE
SCALE: 6" = 1'-0"

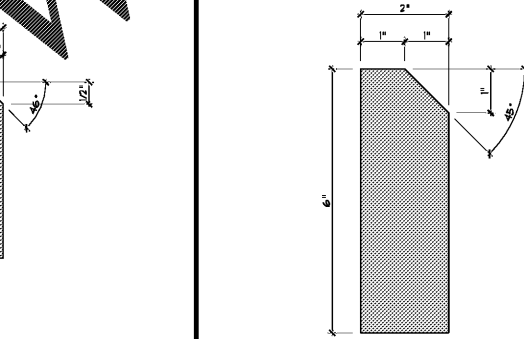


4 NOT USED

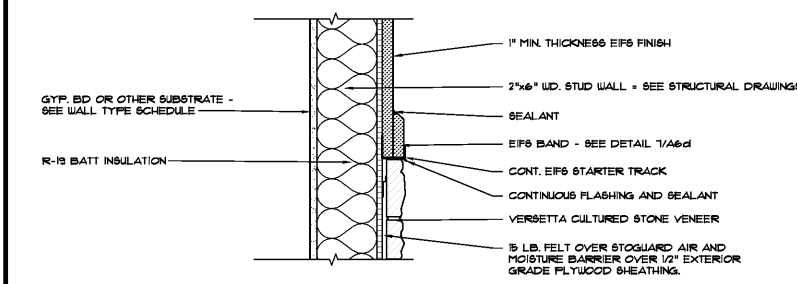
1 EIFS. PROFILE
SCALE: 6" = 1'-0"



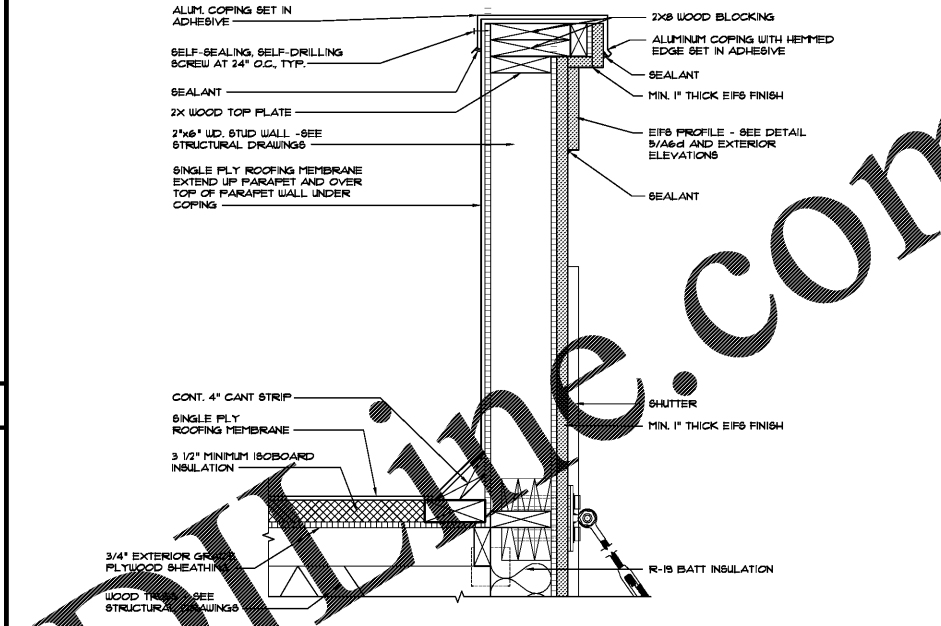
6 EIFS. PROFILE
SCALE: 6" = 1'-0"



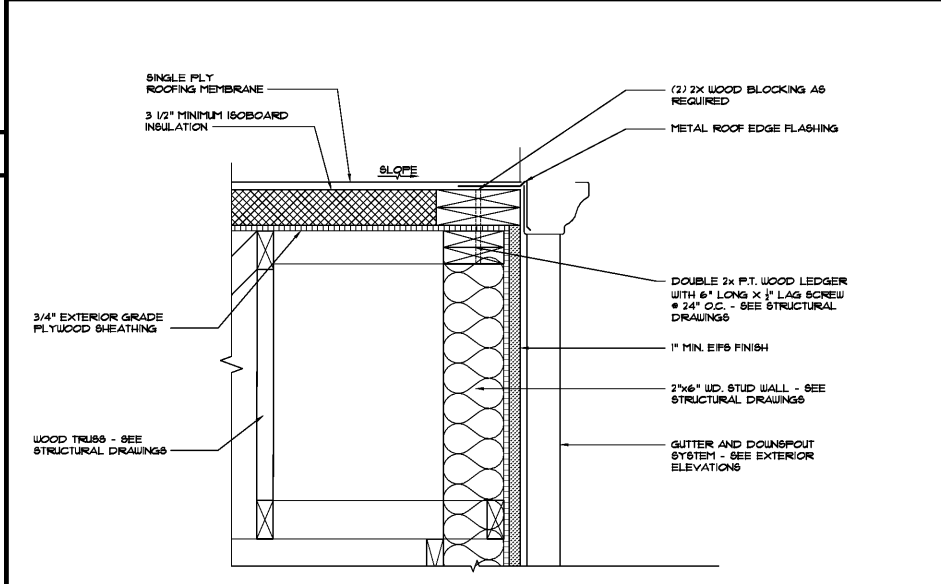
8 DETAIL
SCALE: 1-1/2" = 1'-0"



1 DETAIL
SCALE: 1-1/2" = 1'-0"



1a DETAIL
SCALE: 1-1/2" = 1'-0"

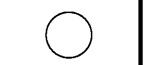


2 DETAIL
SCALE: 1-1/2" = 1'-0"

REVISIONS	BY

OLIVERI ARCHITECTS
Member of the American Institute of Architects
32707 US Hwy 19 • Palm Harbor, FL 34684
Phone 727.781.7525 • Fax 727.781.6923
www.oliveriarchitects.com

ALL INFORMATION CONTAINED HEREIN IS THE PROPERTY OF OLIVERI ARCHITECTS AND IS NOT TO BE REPRODUCED OR TRANSMITTED IN ANY FORM OR BY ANY MEANS, ELECTRONIC OR MECHANICAL, INCLUDING PHOTOCOPYING, RECORDING, OR BY ANY INFORMATION STORAGE AND RETRIEVAL SYSTEM.



Joseph L. Oliveri, AIA
State of Georgia
License #601552

New Free Standing Building for
POPEYE'S
US Highway 29 & Nease Drive
Athens, Georgia

Date: 11. 07. 17
Scale: AS NOTED
Project Mgr: DG
Drawn: GN11
Job: 17-083
Sheet

A6d

Order Plans