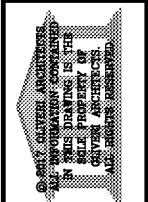


REVISIONS	BY
02.16.2018 R1 REVISIONS	DG

OLIVERI ARCHITECTS
 Member of the American Institute of Architects
 32707 US Hwy 19 • Palm Harbor, FL 34684
 Phone 727.781.7525 • Fax 727.781.0623
 www.oliveriarchitects.com



Joseph L. Oliveri, AIA
 State of Georgia
 License No. 000000000

New Free Standing Building for
POPEYE'S
 US Highway 29 & Nease Drive
 Athens, Georgia

Date: 11. 07. 17
 Scale: AS NOTED
 Project Mgr: DG
 Drawn: DD
 Job: 17-083
 Sheet

A5

KEYED NOTES

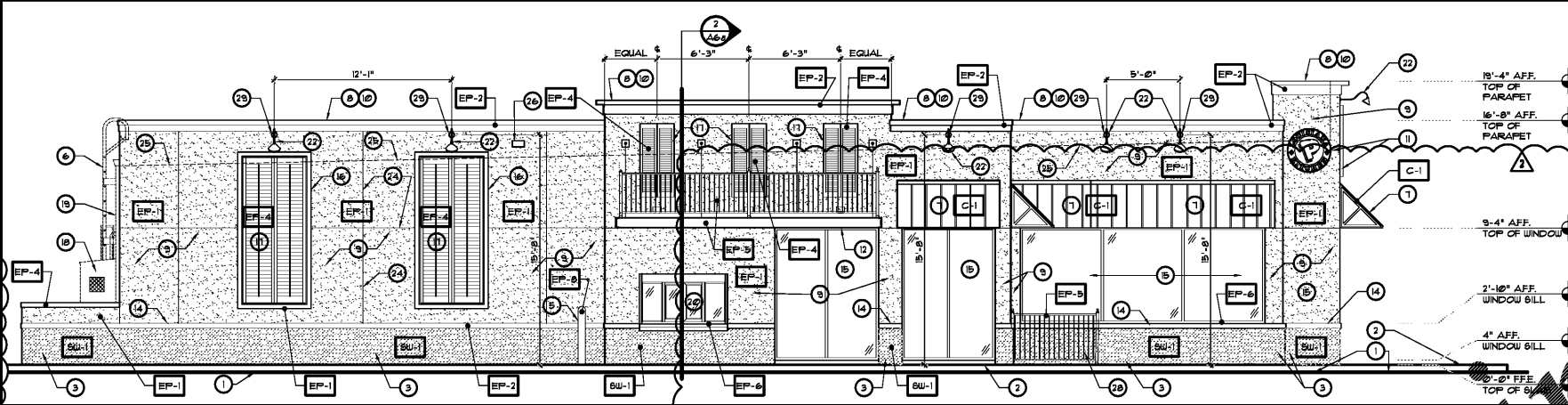
- 1 APPROXIMATE GRADE / PAVEMENT
- 2 CONCRETE SIDEWALK/CURB - SEE SITE PLAN
- 3 STONE VENEER - SU-1
- 4 GAS METER
- 5 PIPE BOLLARD - FINISH TO BE EP-2
- 6 ROOF ACCESS LADDER - PAINT TO MATCH STOREFRONT COLOR
- 7 STANDING BEAM METAL AWNING INSTALLED BY MANUFACTURER - AWNING SUPPORTS AT 4'-0" O.C. AND EACH END FINISH TO BE EP-2
- 8 CONT. METAL COPING / FLASHING WITH TYPED LEAD EDGE SET IN ADHESIVE - SEE WALL SECTIONS
- 9 EIFS FINISH - SEE WALL SECTIONS
- 10 EIFS TRIM - SEE WALL SECTIONS
- 11 SIGNAGE BY SIGN VENDOR
- 12 DRIVE-THRU CANOPY AND RAILING SYSTEM - FINISH TO BE EP-5 - SEE WALL SECTIONS
- 13 ELECTRICAL SERVICE PAINT TO MATCH ADJACENT WALL COLOR
- 14 HANDING
- 15 STOREFRONT WINDOW / DOOR SYSTEM - SEE FLOOR PLAN FOR MORE INFORMATION
- 16 EIFS FRAME - FINISH TO BE EP-1 - SEE DETAIL C/A4
- 17 1/2" VINYL SHUTTER - FINISH TO BE EP-2 - SEE DETAILS A, B AND C ON THIS SHEET FOR SIZE
- 18 GREASE AND CO2 ENCLOSURE - PAINT TO MATCH ADJACENT WALL COLOR
- 19 GUTTER AND DOWNSPOUT SYSTEM - CONNECT TO UNDERGROUND STORM SYSTEM - FINISH TO BE EP-2
- 20 DRIVE-THRU WINDOW SYSTEM - SEE FLOOR PLAN AND WINDOW SCHEDULE
- 21 RAIN DEFLECTOR - FINISH TO MATCH DOOR COLOR
- 22 LIGHT FIXTURE - SEE ELECTRICAL DRAWINGS
- 23 DOOR SYSTEM - PAINT TO MATCH ADJACENT WALL COLOR
- 24 EIFS REVEL
- 25 APPROXIMATE LINE OF SLOPING ROOF BEHIND PARAPET
- 26 SPEAKER - SEE ELECTRICAL DRAWINGS
- 27 INSULATED GREASE REMOVAL PIPE
- 28 3'-6" HIGH STEEL RAILING - SEE DETAIL A/A18
- 29 CENTER LIGHT FIXTURE OR SET OF FIXTURES OVER SHUTTER / WINDOW / DOOR BELOW

EXTERIOR FINISH SCHEDULE

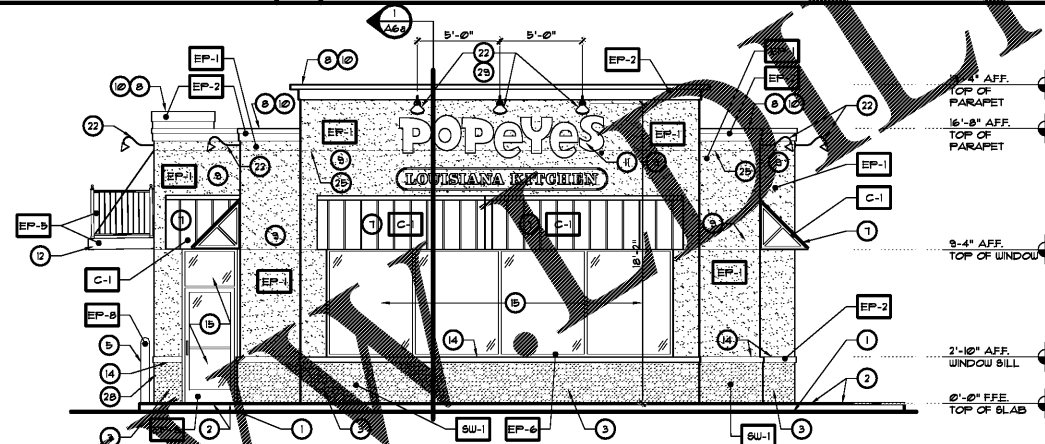
- EP-1 PAINT - BENJAMIN MOORE - 2158-30 - DELIGHTFUL GOLDEN - ULTRASPEC SATIN
- EP-2 PAINT - BENJAMIN MOORE - 2086-10 - EXOTIC RED - ULTRASPEC SATIN
- EP-3 PAINT - BENJAMIN MOORE - 2181-20 - MOCHA BROWN - ULTRASPEC SATIN
- EP-4 PAINT - BENJAMIN MOORE - 2040-10 - RAINFOREST FOLIAGE - 110 SEMI GLOSS
- EP-5 METAL POWDERCOAT - TIGER DRYLAC - COLOR RAL 6009 HUNTER GREEN - SMOOTH
- EP-6 PAINT - BENJAMIN MOORE - 2040-10 - RAINFOREST FOLIAGE - F-25 DTM SEMI GLOSS
- EP-7 ANODIZED ALUMINUM - YKK AP - YBEN - DARK BRONZE
- EP-8 NOT USED
- EP-9 PAINT - BENJAMIN MOORE - R1 SAFETY YELLOW - P58-10
- SU-1 VERSETTA SIMULATED STONE VENEER - LEDGESTONE - PLUMB CREEK - NONOVERLAPPING
- SG-1 VENEER STONE MORTAR - QUIKRETE - POLYMER MODIFIED - COLOR: MOCHA BROWN - 131-89
- G-1 METAL POWDERCOAT - AWNING SUPPLIER - COLOR: RAL 6009 HUNTER GREEN - SMOOTH
- C-1 UNA-CLAD - COPPER SALES, INC. - UC-4 ALUMINUM - COLOR: REGAL RED - 12" O.C.

GENERAL NOTES

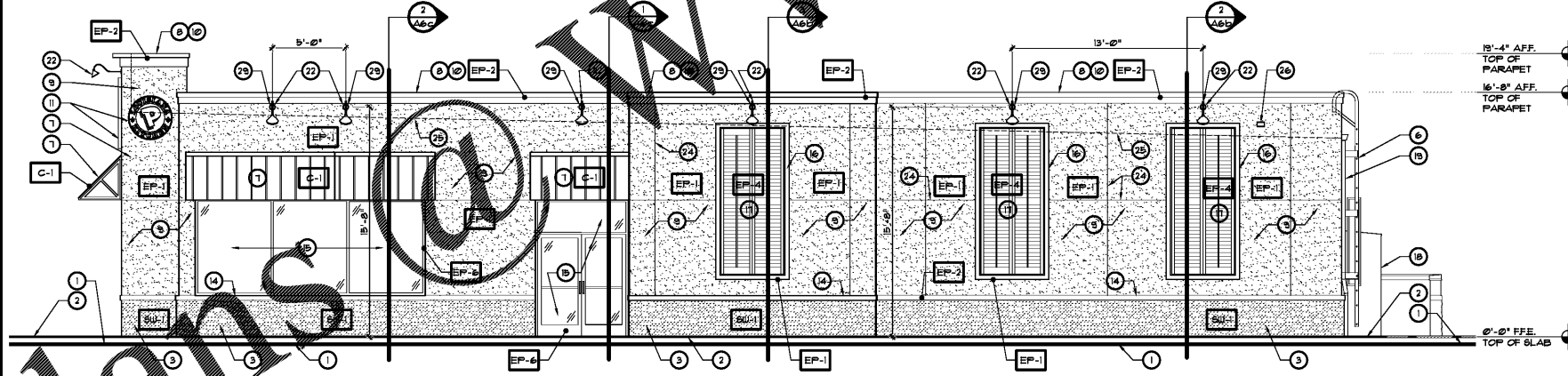
1. CONTRACTOR TO VERIFY ALL EXISTING CONDITIONS BEFORE COMMENCING ANY WORK NOTIFY ARCHITECT IMMEDIATELY IN WRITING WITH ANY ISSUES.
2. ALL PAINT WORK MUST INCLUDE A 2 YEAR FULL WARRANTY AND A YEAR PRO-RATED LABOR AND MATERIALS WARRANTY
3. ALL AWNING SIZES TO BE FIELD VERIFIED BEFORE FABRICATION
4. ALL EXTERIOR FINISHES AND PAINT COLOR SELECTIONS TO BE VERIFIED WITH POPEYE'S CONSTRUCTION MANAGER BEFORE ORDERING.
5. CONTACT JASON BRAGG WITH ENTERA BRANDING, 3000 ENTERA DR. PANAMA CITY, FLORIDA 32401 (TEL: 850.392.0001) FOR ALL SHUTTERS, AWNINGS AND DRIVE THRU CANOPY. VERIFY SIZES WITH ENTERA BRANDING AND POPEYE'S CONSTRUCTION MANAGER BEFORE ORDERING.



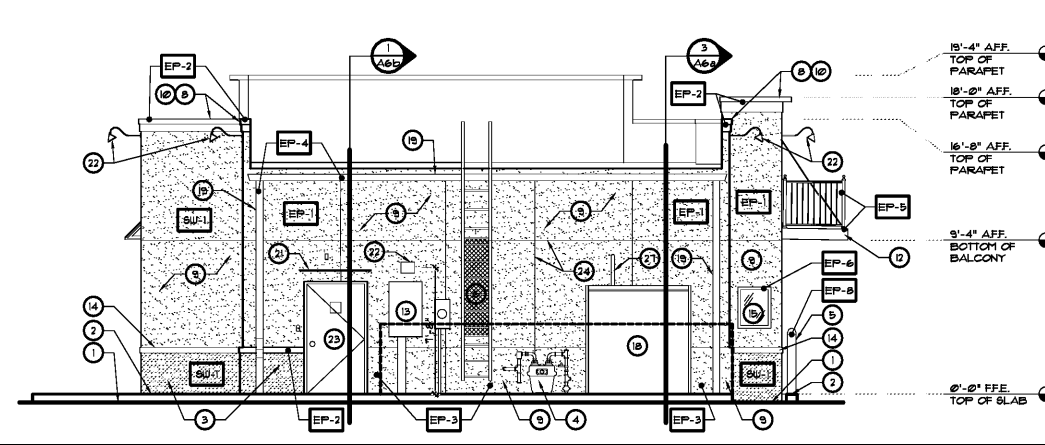
1 SOUTHWEST ELEVATION
SCALE: 3/16" = 1'-0"



2 SOUTHEAST ELEVATION
SCALE: 3/16" = 1'-0"



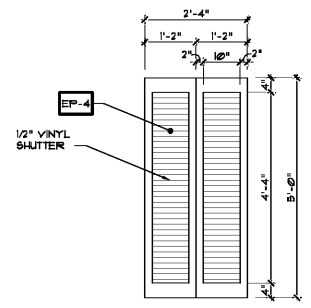
3 NORTHEAST ELEVATION
SCALE: 3/16" = 1'-0"



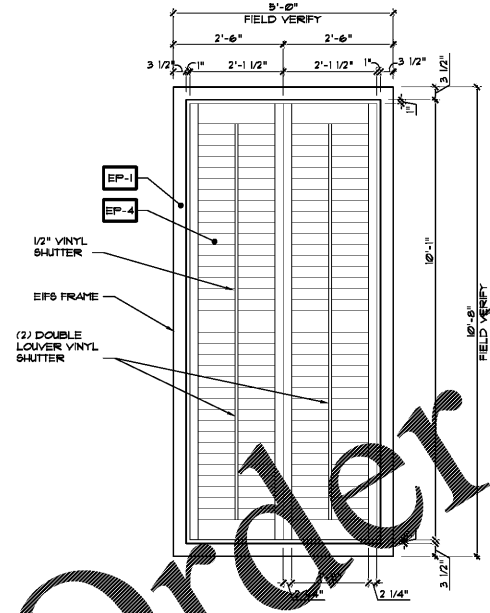
4 NORTHWEST ELEVATION
SCALE: 3/16" = 1'-0"

SOUTHWEST FACADE (GROUND TO 12" AFF.) = 830 SF = 249 SF. OF WINDOWS REQUIRED
WINDOWS PROVIDED = 249.8 SF.

A SOUTH WEST FACADE WINDOW CALC.
SCALE:



B SHUTTER DETAIL AT DRIVE-THRU
SCALE: 1/2" = 1'-0"



C SHUTTER DETAIL
SCALE: 1/2" = 1'-0"

Order Plans