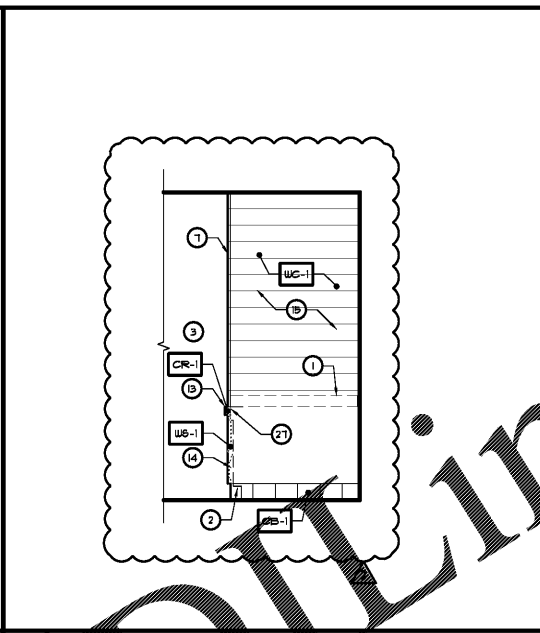
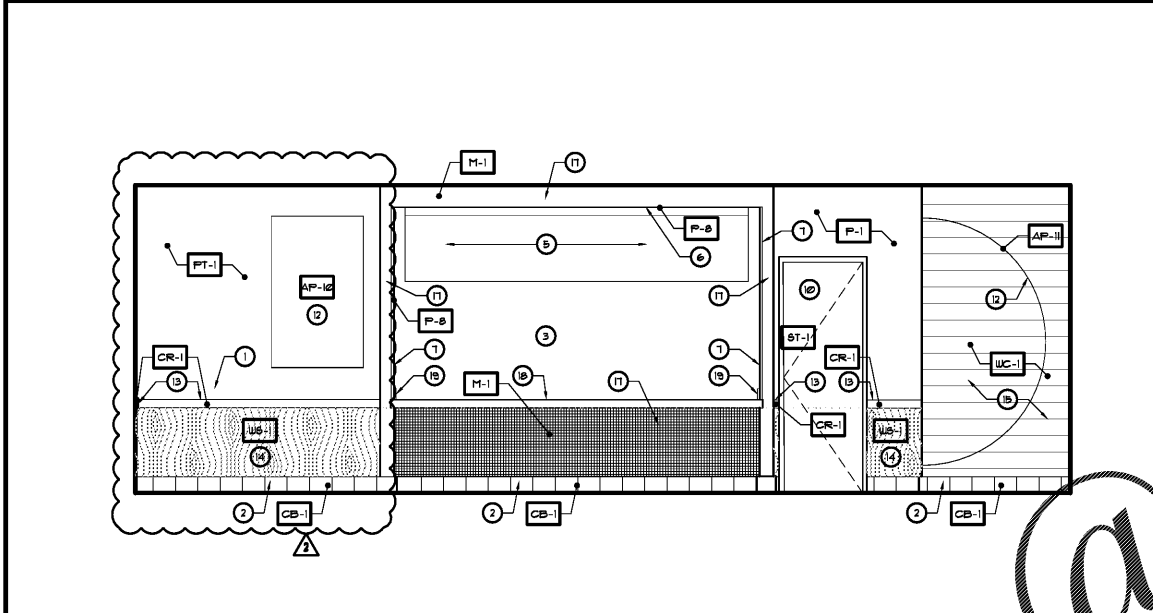


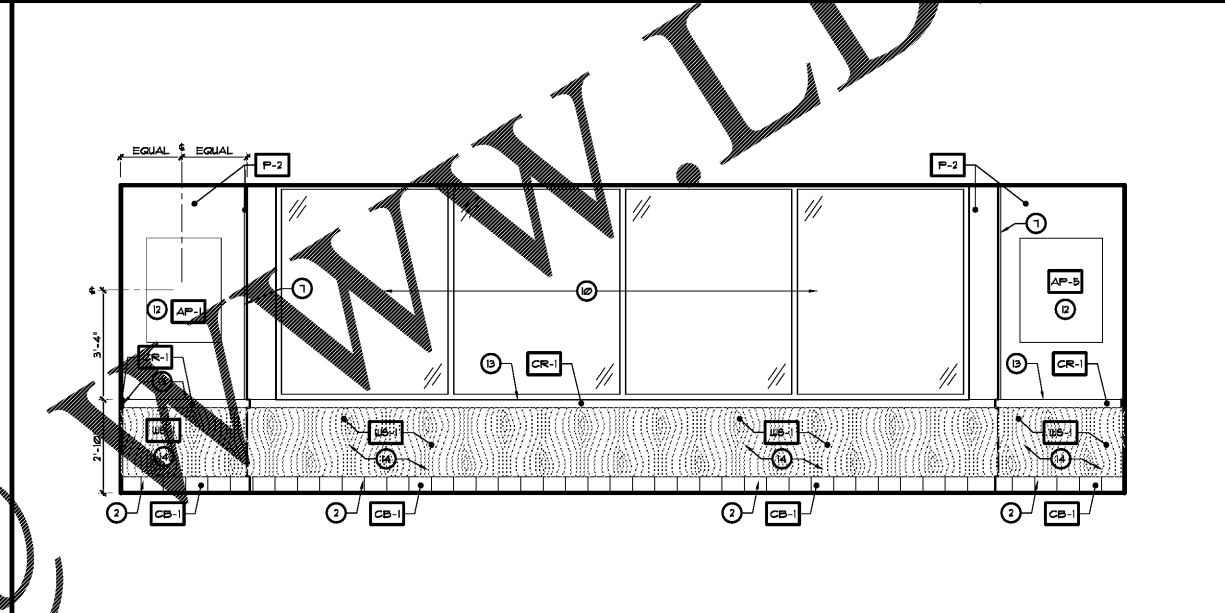
1 DINING ROOM ELEVATION  
SCALE: 3/8" = 1'-0"



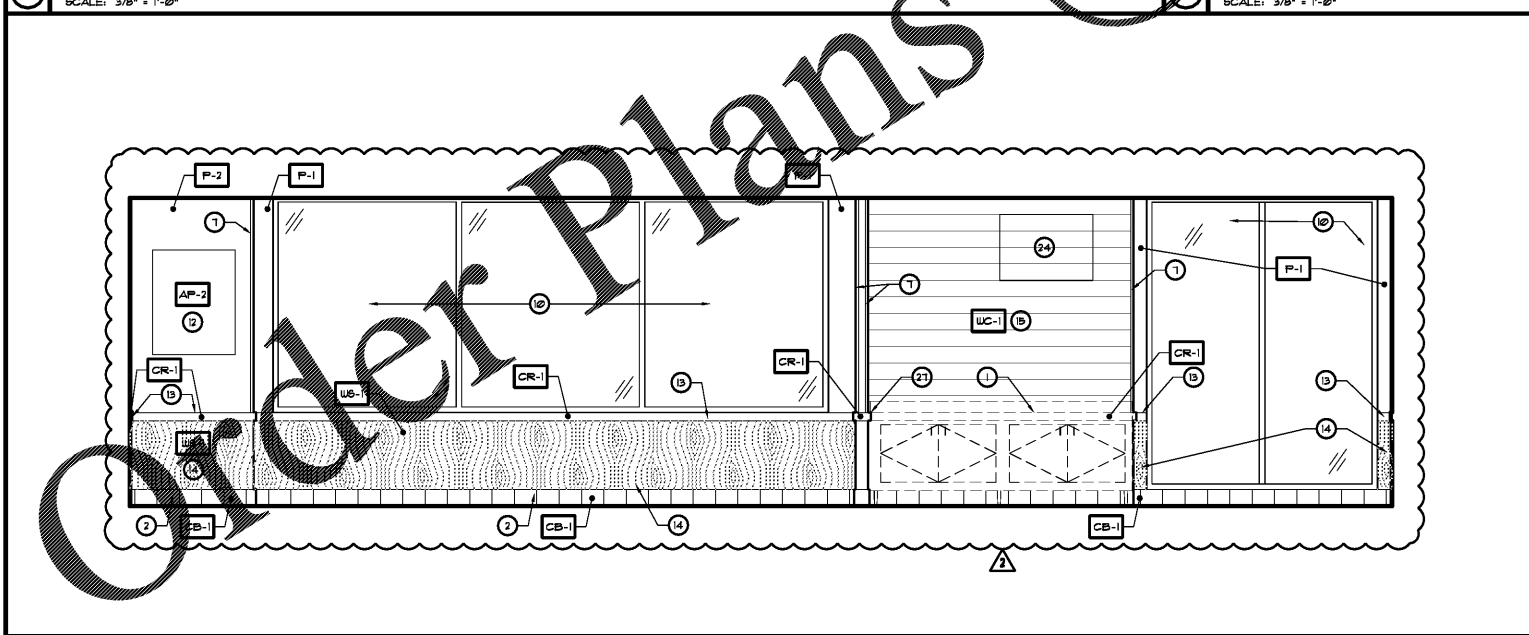
2 BEVERAGE COUNTER  
SCALE: 1/2" = 1'-0"



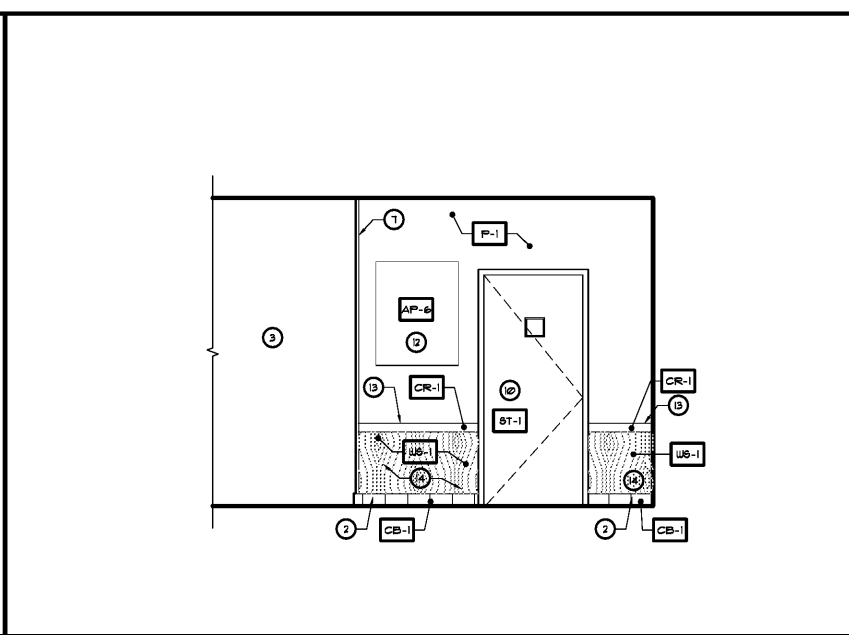
3 SALES AREA ELEVATION  
SCALE: 3/8" = 1'-0"



4 DINING ROOM ELEVATION  
SCALE: 3/8" = 1'-0"



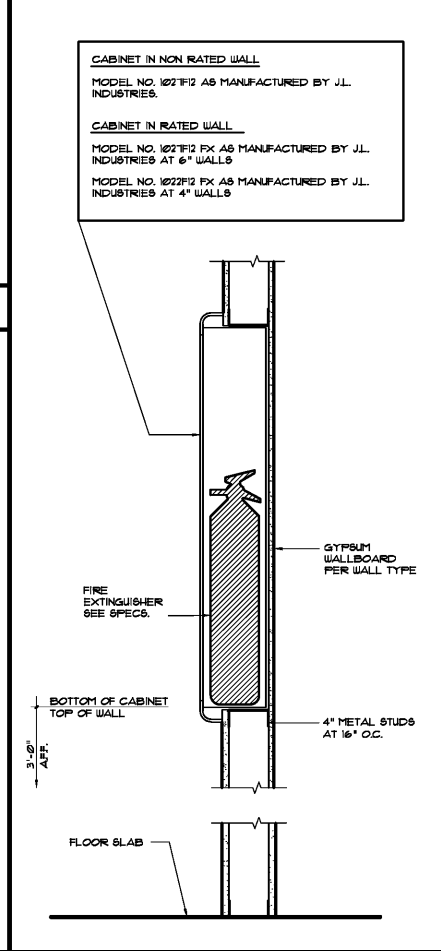
5 DINING ROOM ELEVATION  
SCALE: 3/8" = 1'-0"



6 HALL ELEVATION  
SCALE: 3/8" = 1'-0"

- ### KEYED NOTES
- 1 EQUIPMENT/CASEWORK BY OTHERS - SEE SHEETS KI - K3
  - 2 WALL BASE - SEE FINISH SCHEDULE
  - 3 OPEN BEYOND
  - 4 HAND SINK - SEE PLUMBING DRAWINGS
  - 5 MENU BOARD SYSTEM - SEE EQUIPMENT PLAN AND SCHEDULE
  - 6 DROP SOFFIT - SEE REFLECTED CEILING PLAN
  - 7 WOOD CORNER GUARD
  - 8 2" X 2" X 4'-0" HIGH CORNER GUARDS ON ALL OUTSIDE CORNERS AT KITCHEN WALLS
  - 9 3 COMPARTMENT SINK - SEE PLUMBING DRAWINGS
  - 10 DOOR/WINDOW SYSTEM - SEE FLOOR PLAN
  - 11 SLIDING DRIVE-THRU WINDOW - SEE FLOOR PLAN
  - 12 WALL GRAPHIC - SEE IDI SHEET
  - 13 WOOD CHAIR RAIL - SEE DETAIL A/AB
  - 14 WOOD WAINSCOT - SEE IDI SHEET
  - 15 6" PINE TONGUE & GROOVE WALL PLANK - SEE IDI SHEET
  - 16 WOOD DOOR
  - 17 MOSAIC TILE - SEE IDI SHEET
  - 18 SOLID SURFACE COUNTERTOP - SEE IDI SHEET
  - 19 4" SOLID SURFACE BACKPLASH - SEE IDI SHEET
  - 20 FRP EDGE TRIM
  - 21 1/2" GA. SS SPLASH PANEL AT CAN WASH - TOP AT 5'-0" AFF. - SEE DETAIL Y/AB - FURNISHED AND INSTALLED BY GENERAL CONTRACTOR
  - 22 SS. PANEL - FURNISHED AND INSTALLED BY G.C.
  - 23 ELECTRICAL PANELS - SEE ELECTRICAL DRAWINGS
  - 24 TELEVISION - PROVIDED BY OWNER
  - 25 MOP SINK - SEE FLOOR PLAN
  - 26 H.C. TOILET SIGN - SEE SHEET A/C
  - 27 CUT CHAIR RAIL FOR MILLWORK INSTALLATION

- ### GENERAL NOTES
1. XXXXX SEE SHEET IDI FOR FINISH SCHEDULES.
  2. SEE REFLECTED CEILING PLAN FOR ALL CEILING HEIGHTS.
  3. SEE ELECTRICAL DRAWINGS, FOR ALL LIGHT FIXTURES SPECIFICATIONS.
  4. COORDINATE FINAL LOCATION OF ALL EQUIPMENT AND SIGNAGE WITH EQUIPMENT SUPPLIER AND SIGNAGE VENDOR.
  5. CONTRACTOR TO VERIFY ALL INTERIOR FINISH SELECTIONS WITH OWNER AND POPEYE'S CONSTRUCTION MANAGER BEFORE ORDERING.



7 FIRE EXTINGUISHER CABINET  
SCALE: 1/2" = 1'-0"

REVISIONS	BY
02.16.2018 FL REVIEW	DG

Member of the American Institute of Architects  
32707 US Hwy 19 • Palm Harbor, FL 34884  
Phone 727 781 7525 • Fax 727 781 0623  
www.oliveriarchitects.com

OLIVERI ARCHITECTS

ALL INFORMATION CONTAINED HEREIN IS THE PROPERTY OF OLIVERI ARCHITECTS AND IS TO BE USED ONLY FOR THE PROJECT AND SITE SPECIFICALLY IDENTIFIED HEREON.

Joseph L. Oliveri, AIA  
State of Georgia  
License #6101552

New Free Standing Building for  
**POPEYE'S**  
US Highway 29 & Nease Drive  
Athens, Georgia

Date: 11. 07. 17  
Scale: AS NOTED  
Project Mgr: DG  
Drawn: GNIII  
Job: 17-083  
Sheet  
**A4a**