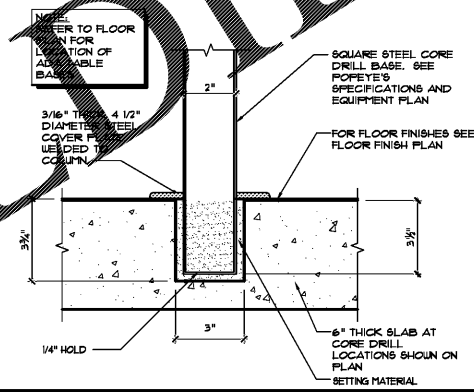


- ### KEYED NOTES
- CORE DRILL LOCATIONS - SEE DETAIL C/D
 - RECESS CONCRETE SLAB 6" FOR MOP SINK AS REQUIRED - SEE DETAIL 1/A/B
 - 8" CMU SCREEN WALL - SEE ELEVATIONS
 - 4"x4" SCUPPER
 - SLAB SLOPE LINES - PROVIDE POSITIVE SLOPE TO SCUPPERS AND MASONRY SCREEN WALL
 - FLOOR DRAIN 1/2" BFF.
 - FLOOR DEPRESSION - 3/8" RIM x 1/4" BFF.
 - 3" METAL STUD FRAMING - MASONRY WALL
 - MAINTAIN 18" CLEARANCE AT DOOR JAMB - FIELD VERIFY CONDITION PRIOR TO DOOR INSTALLATION AND WALL FRAMING.

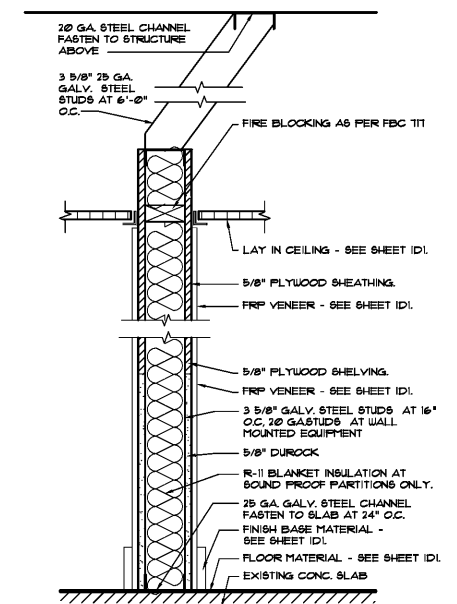
- ### GENERAL NOTES
- GENERAL CONTRACTOR TO VERIFY AND COORDINATE ALL PIPING AND ELECTRICAL ROUGH-IN REQUIREMENTS AND LOCATIONS WITH EQUIPMENT SUPPLIER.
 - O.C. TO VERIFY ARCHITECT IN WRITING WITH ANY DISCREPANCIES FROM DISCOVERY PRIOR TO COMMENCING WITH ANY WORK.
 - SEE PLUMBING AND ELECTRICAL DRAWINGS FOR MORE INFORMATION.
 - ALL INTERIOR DOORS ARE TO HAVE A 4" JAMB AT HINGE SIDE OF DOOR U/L.
 - THIS PLAN IS FOR DIMENSIONAL PURPOSES ONLY.
 - GENERAL CONTRACTOR TO NOTIFY ARCHITECT AFTER LAYOUT IS DONE AND WALL TRACK IS IN PLACE PRIOR TO FRAMING ANY WALLS.
 - FOR DIMENSIONING PURPOSES, METAL STUDS ARE DRAWN AT 4" OR 6" U/L, AND BLOCK WALLS ARE DRAWN AT 8" U/L.
 - 8" BLOCK WALLS AND 6" METAL STUD WALLS ARE DIMENSIONED AT FACE OF WALL AND 4" METAL STUD WALLS ARE DIMENSIONED AT CENTER OF WALL U/L.

A DOOR MANEUVERING CLEARANCES
SCALE: N.T.S.

B FIXED ACCESSIBLE TABLE
SCALE: 1/4" = 1'-0"



C CORE DRILL TABLE BASE DETAIL
SCALE: 3/8" = 1'-0"



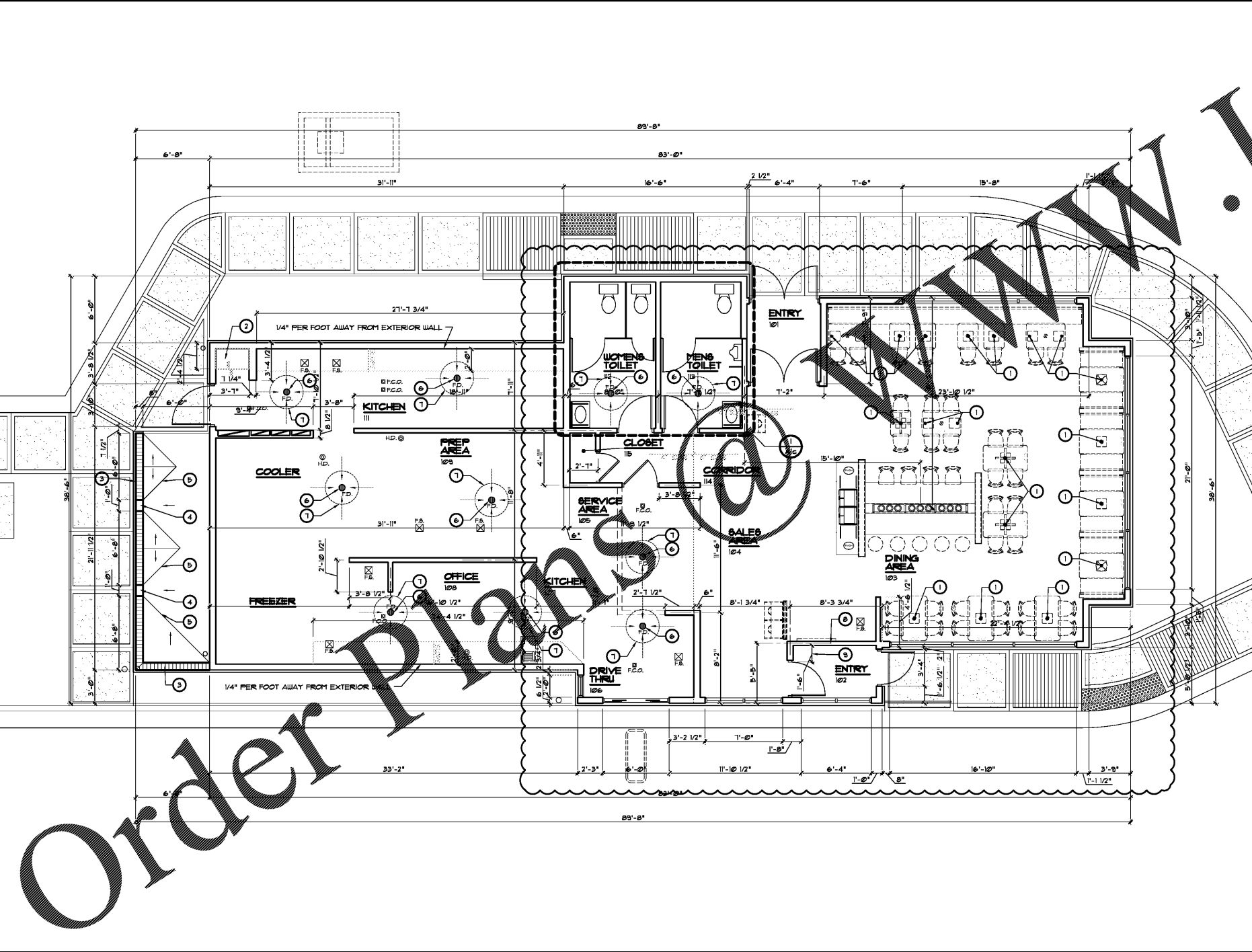
TYPICAL SUBSTRATES FOR INTERIOR WALLS SHALL BE AS FOLLOWS:

KITCHEN AND STORAGE AREAS:
0'-0" TO 3'-0" - 5/8" DUROCK CEMENT BOARD,
3'-0" AND ABOVE - 5/8" PLYWOOD.

SERVICE AREA AND DRIVE THRU:
5/8" MIN. PLYWOOD,
5/8" DUROCK CEMENT BOARD (WHERE TILE IS USED).

SALES AND SEATING AREAS:
5/8" GYPSUM BOARD.

OFFICE:
5/8" MIN. PLYWOOD.

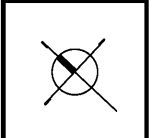
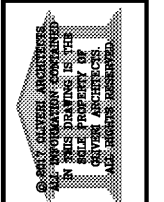


D SLAB PENETRATION PLAN / DIMENSIONED PLAN
SCALE: 3/16" = 1'-0"

E INTERIOR WALL SECTION
SCALE: 1/2" = 1'-0"

REVISIONS	BY
02.16.2018	DG
FLUVEY	

OLIVERI ARCHITECTS
Member of the American Institute of Architects
3207 US Hwy 19 • Palm Harbor, FL 34884
Phone 727.781.7525 • Fax 727.781.6923
www.oliveriarchitects.com



New Free Standing Building for
POPEYE'S
US Highway 29 & Nease Drive
Athens, Georgia

Date: 11. 07. 17
Scale: AS NOTED
Project Mgr: DG
Drawn: GN11
Job: 17-083

Sheet
A1b

Order Plans @ **WWW.POPAYE.COM**