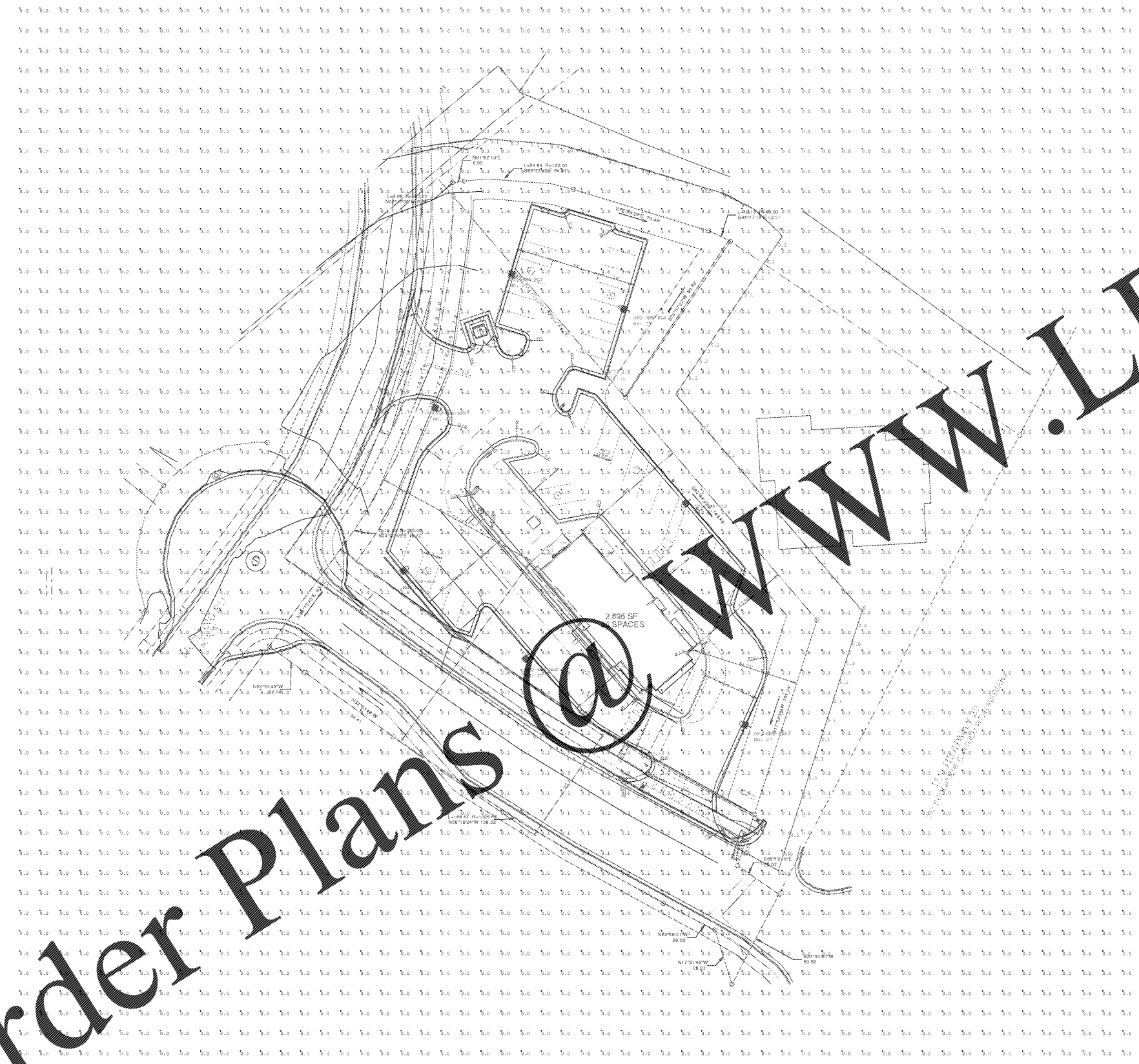


Luminaire Schedule		Lumens/Lamp		Total Watts		Description	
Symbol	Qty	Label	Arrangement	LLF			
OSQ	17	OSQ-4ME	SINGLE	17159	1.000	1162	OSQ-A-NM-4ME-T-57K-UL-BK

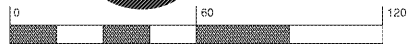
Footcandles calculated using predicted lumen values after 50K hours of operation					
Label	Avg	Max	Min	Avg	Max/Min
20' past property line	0.20	0.7	0.0	N/A	N/A
PARKING	2.82	5.9	1.0	2.82	5.9

FIXTURE MOUNTING HEIGHT: 27' AFG (25' POLE + 2' BASE)

ADDITIONAL EQUIPMENT REQUIRED:
 (7) CL-SSP-401-25-OT-BZ (25' x 4" SQ POLE, TENON JOINT)
 (7) OSQ-DABZ DIRECT ARM MOUNT
 PROPOSED POLES MEET 120MPH SUSTAINED WIND LOADS



Order Plans @



"DLC V6 as in effect as of April 1, 2017 which impacts the rebate eligibility of many LED products. If you require DLC-qualified fixtures, please reference <https://www.designlight.org/search/> for updated qualified product listings. Email: rebate@cree.com or rebate@www.cree.com"



1200 92nd Street - Shelton, WI 53177
 www.cree.com (800) 235-6800

Project Name: POPEYE'S - ATHENS, GA SR-26767
 Date: 11/1/2017 Scale: 1"=30' Footcandles calculated at grade
 Filename: V:\Common\AppEng\NAT\POP-171101\ATGACB.AGI Layout by: CHRIS BOSANEC

Simulation results shown on this lighting design are based on project parameters provided to Cree, Inc. used in conjunction with luminaire test procedures conducted under laboratory conditions. Actual project conditions differing from these design parameters may affect field results. The customer is responsible for verifying dimensional accuracy along with compliance with any applicable electrical, lighting, or energy code.