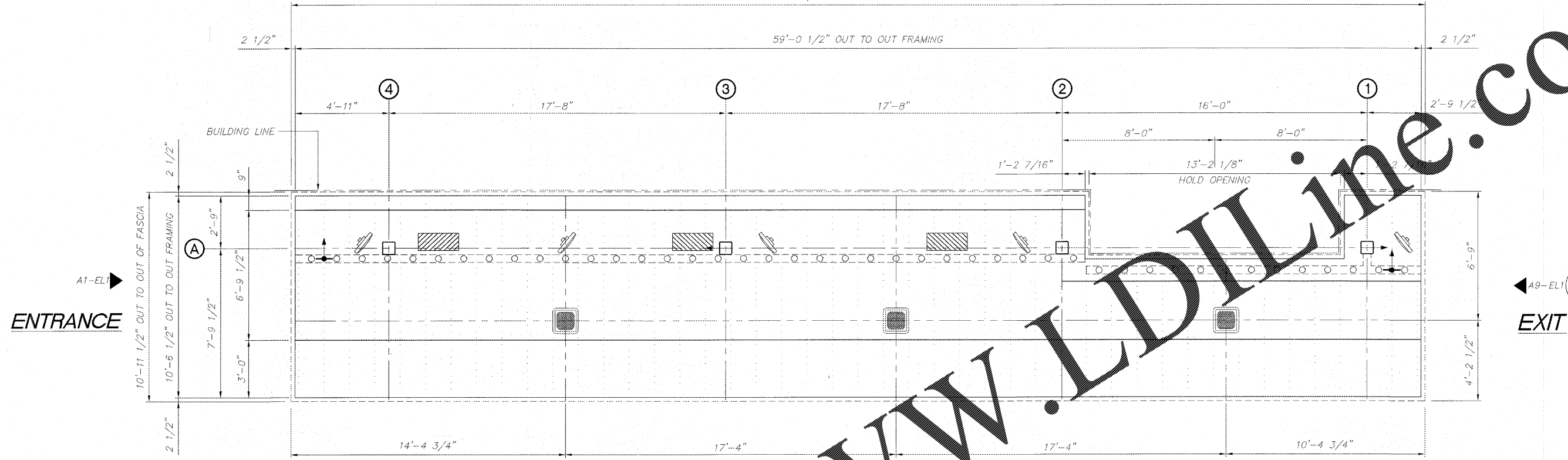


BUILDING

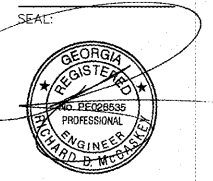
59'-5 1/2" OUT TO OUT OF FASCIA

59'-0 1/2" OUT TO OUT FRAMING



Chick-fil-A
 5200 Buffington Road
 Atlanta, Georgia 30349-2998

LANE SUPPLY, INC.
 120 FAIRVIEW
 ARLINGTON, TX. 76010
 (817) 261-9116



OCT 24 2017

CHICK-FIL-A
 SAR South Cobb Dr FSR
 3100 South Cobb Dr SE
 Smyrna, GA 30080

FSR# 00810

REVISION SCHEDULE		
NO.	DATE	DESCRIPTION

CONSULTANT PROJECT #	59684
PRINTED FOR	Permit
DATE	2017/10/20
DRAWN BY	JH
CHECKED BY	DTN

Information contained on this drawing and in all digital files produced for above named project may not be reproduced in any manner without express written or verbal consent from authorized project representatives.

SHEET
CANOPY LIGHT LAYOUT

SHEET NUMBER
 OMD-9
LLI OF 1

FI CANOPY LIGHT LAYOUT

1/4" = 1'-0"

1. THE LIGHT LAYOUT IS A SUGGESTED PLAN ONLY. IT IS PROVIDED BY LANE AS A SERVICE TO ITS CUSTOMER AND IS TO BE USED AS A GUIDE ONLY.
2. THESE LIGHT FIXTURES NEED TO BE CENTERED IN DECK PANELS.
3. ENSURE ADEQUATE CLEARANCE FROM STRUCTURAL MEMBERS PRIOR TO CUTTING DECK.
4. INSTALLATION OF FIXTURES TO BE DONE IN ACCORDANCE WITH MANUFACTURERS INSTRUCTIONS AND RECOMMENDATIONS.
5. IF LIGHTS INTERFERE WITH LEADER GUTTERS MOVE ROW LIGHTS TO THE NEXT DECK.

LEGEND:

- INDICATES CRUS-CS-LED-LW-30-UE-WHT CANOPY DECK LIGHTS.
- INDICATES DECK STITCHING.
- INDICATES MOUNTED FAN
- INDICATES MOUNTED HEATER

AI	GENERAL NOTES	A6	NOT USED	A10	NOT USED
N.T.S.		N.T.S.		N.T.S.	

Order Plans @ WWW.LDILine.com