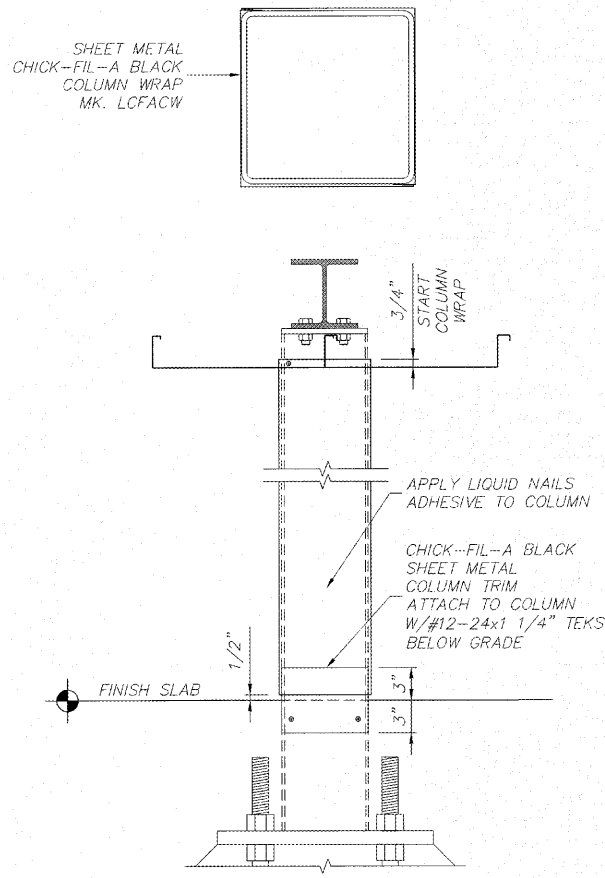


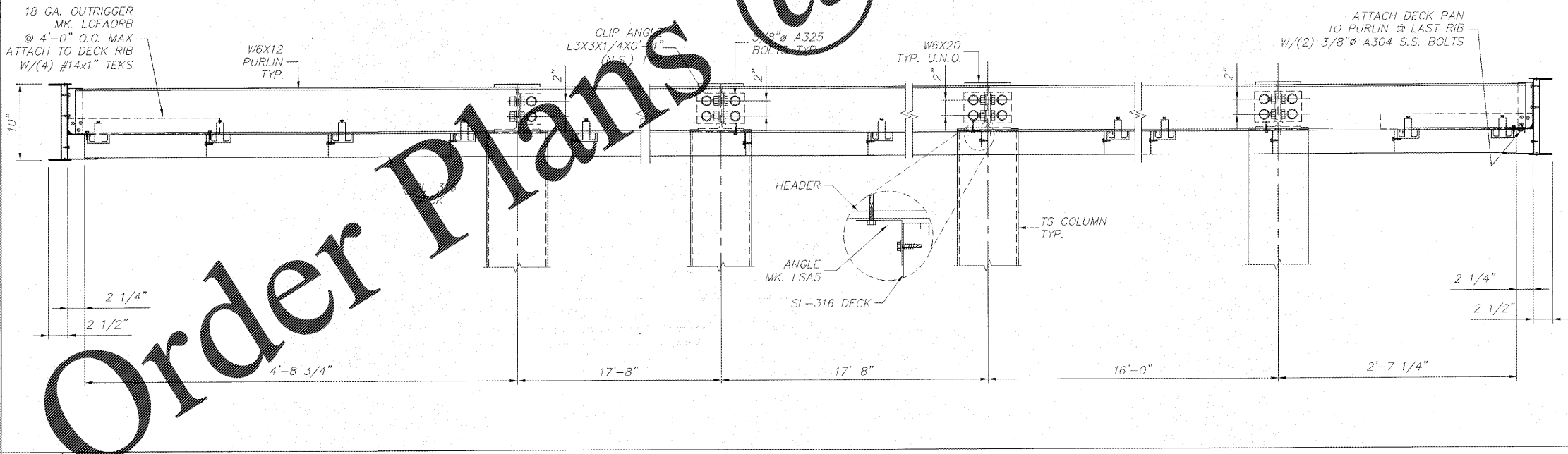
www.LDILine.com



G1	COLUMN WRAP
1 1/2" = 1'-0"	FI-EI

G5	NOT USED
----	----------

LI4	NOT USED
N.T.S.	
FI4	NOT USED
N.T.S.	



A1	FASCIA SECTION
1 1/2" = 1'-0"	FI-EI

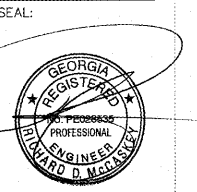
DEAD LOAD = 3 p.s.f.(DECK + LIGHTS) + WEIGHT OF STRUCTURAL COMPONENTS
 LIVE LOAD = 20 p.s.f.
 SNOW LOAD = 5 p.s.f.
 V, ULT = 116 m.p.h. EXP C
 V, ASD = 90 m.p.h. EXP C
 BLDG CODE = 2012 INTERNATIONAL BUILDING CODE w/ GEORGIA AMENDMENTS 2014, 2015, 2017
 EQUIVALENT LATERAL FORCE PROCEDURE
 LATERAL FORCE RESISTING SYSTEM = CANTILEVERED COLUMN SYSTEM-ORDINARY STEEL MOMENT FRAME
 SITE CLASS = D
 S_s (0.2) = 0.20
 S₁ (1.0) = 0.09
 SDS = 0.21
 SD1 = 0.15
 F_a = 1.60
 F_v = 2.40
 R = 1.25
 IMPORTANCE FACTOR = 1.0
 RISK CATEGORY = II
 SEISMIC DESIGN CATEGORY = C
 CS = 0.170
 CONSTRUCTION TYPE = IIB
 OCCUPANCY CATEGORY = M
 TOTAL SEISMIC BASE SHEAR BOTH DIRECTIONS = 0.73 KIPS

A14	DESIGN LOADS
N.T.S.	



Chick-fil-A
 5200 Buffington Road
 Atlanta, Georgia 30349-2998

LANE
 SUPPLY, INC.
 120 FAIRVIEW
 ARLINGTON, TX. 76010
 (817) 261-9116



OCT 24 2017

CHICK-FIL-A
 SAR South Cobb Dr FSR
 3100 South Cobb Dr SE
 Smyrna, GA 30080

FSR# 00810

REVISION SCHEDULE	
NO.	DESCRIPTION

CONSULTANT PROJECT #	59684
PRINTED FOR	Permit
DATE	2017/10/20
DRAWN BY	JH
CHECKED BY	DTN

CANOPY SECTIONS