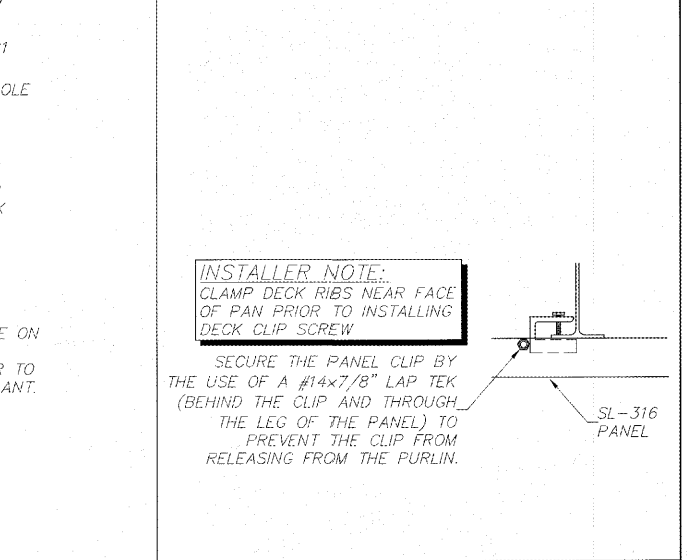
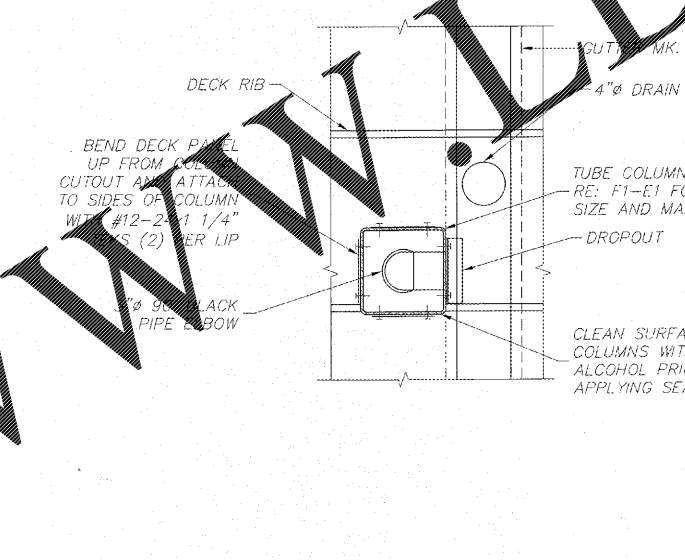
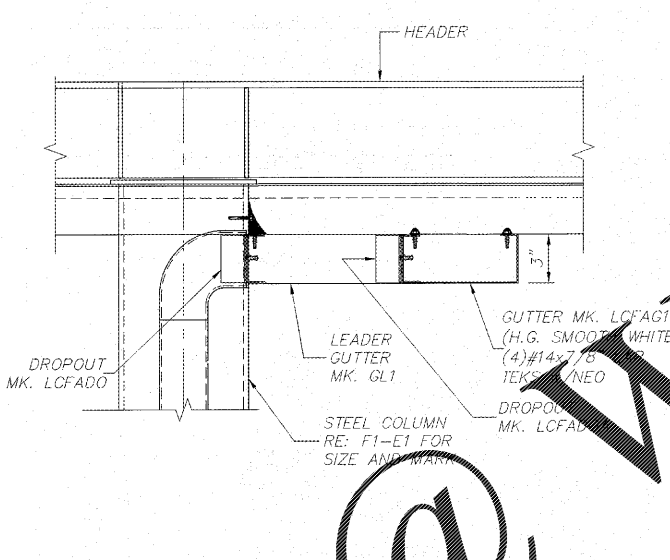
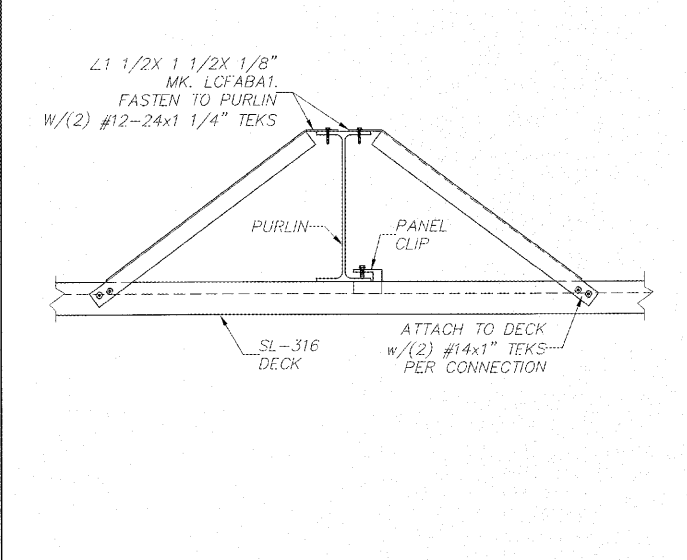


LI DETAIL AT END OF CANOPY
N.T.S. FI-E2

L5 DETAIL AT FASCIA CORNER AND SPLICE
N.T.S. FI-EI

L9 SECTION AT FAN SUPPORT
N.T.S. FI-EI

L13 SECTION AT HEATER SUPPORT
N.T.S. FI-EI

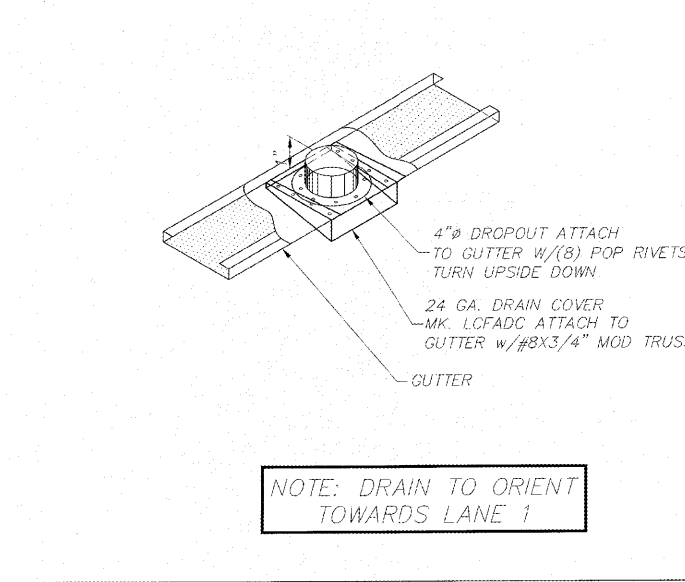
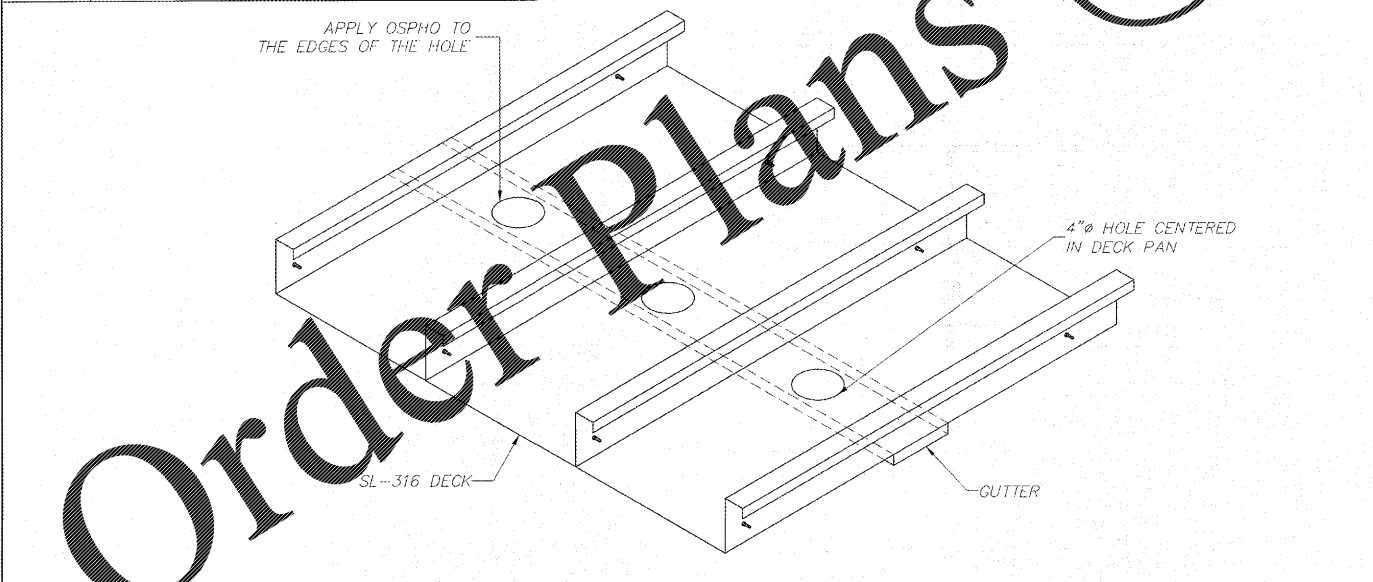


FI SECTION AT PURLIN BRIDGING
N.T.S. FI-E2

F5 SECTION AT GUTTER
N.T.S. FI-EI

F9 DETAIL AT DECK SUPPORT
1 1/2\"/>

FI4 DETAIL AT DECK CLIP
N.T.S. AI-E2, FI-E2



DEAD LOAD = 3 p.s.f.(DECK + LIGHTS) + WEIGHT OF STRUCTURAL COMPONENTS
 LIVE LOAD = 20 p.s.f.
 SNOW LOAD = 5 p.s.f.
 V, ULT = 116 m.p.h. EXP C
 V, ASD = 90 m.p.h. EXP C
 BLDG CODE = 2012 INTERNATIONAL BUILDING CODE w/ GEORGIA AMENDMENTS 2014, 2015, 2017
 EQUIVALENT LATERAL FORCE PROCEDURE
 LATERAL FORCE RESISTING SYSTEM = CANTILEVERED COLUMN SYSTEM-ORDINARY STEEL MOMENT FRAME
 SITE CLASS = D
 Ss (0.2) = 0.20
 S1 (1.0) = 0.09
 SDS = 0.21
 SD1 = 0.15
 Fa = 1.60
 Fv = 2.40
 R = 1.25
 IMPORTANCE FACTOR = 1.0
 RISK CATEGORY = II
 SEISMIC DESIGN CATEGORY = C
 CS = 0.170
 CONSTRUCTION TYPE = II B
 OCCUPANCY CATEGORY = M
 TOTAL SEISMIC BASE SHEAR BOTH DIRECTIONS = 0.73 KIPS

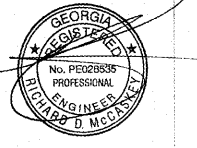
AI SECTION AT DECK
N.T.S. FI-EI

A9 DETAIL OF OVERFLOW DRAIN
N.T.S. FI-EI

A14 DESIGN LOADS
N.T.S.

Chick-fil-A
 Chick-fil-A
 5200 Buffington Road
 Atlanta, Georgia 30349-2998

LANE
 SUPPLY, INC.
 120 FAIRVIEW
 ARLINGTON, TX. 76010
 (817) 261-9116



OCT 24 2017

CHICK-FIL-A
 SAR South Cobb Dr FSR
 3100 South Cobb Dr SE
 Smyrna, GA 30080

FSR# 00810

REVISION SCHEDULE		DESCRIPTION
NO.	DATE	

CONSULTANT PROJECT # 59604
 PRINTED FOR Permit
 DATE 2017/10/20
 DRAWN BY JH
 CHECKED BY DTH

Order Plans @