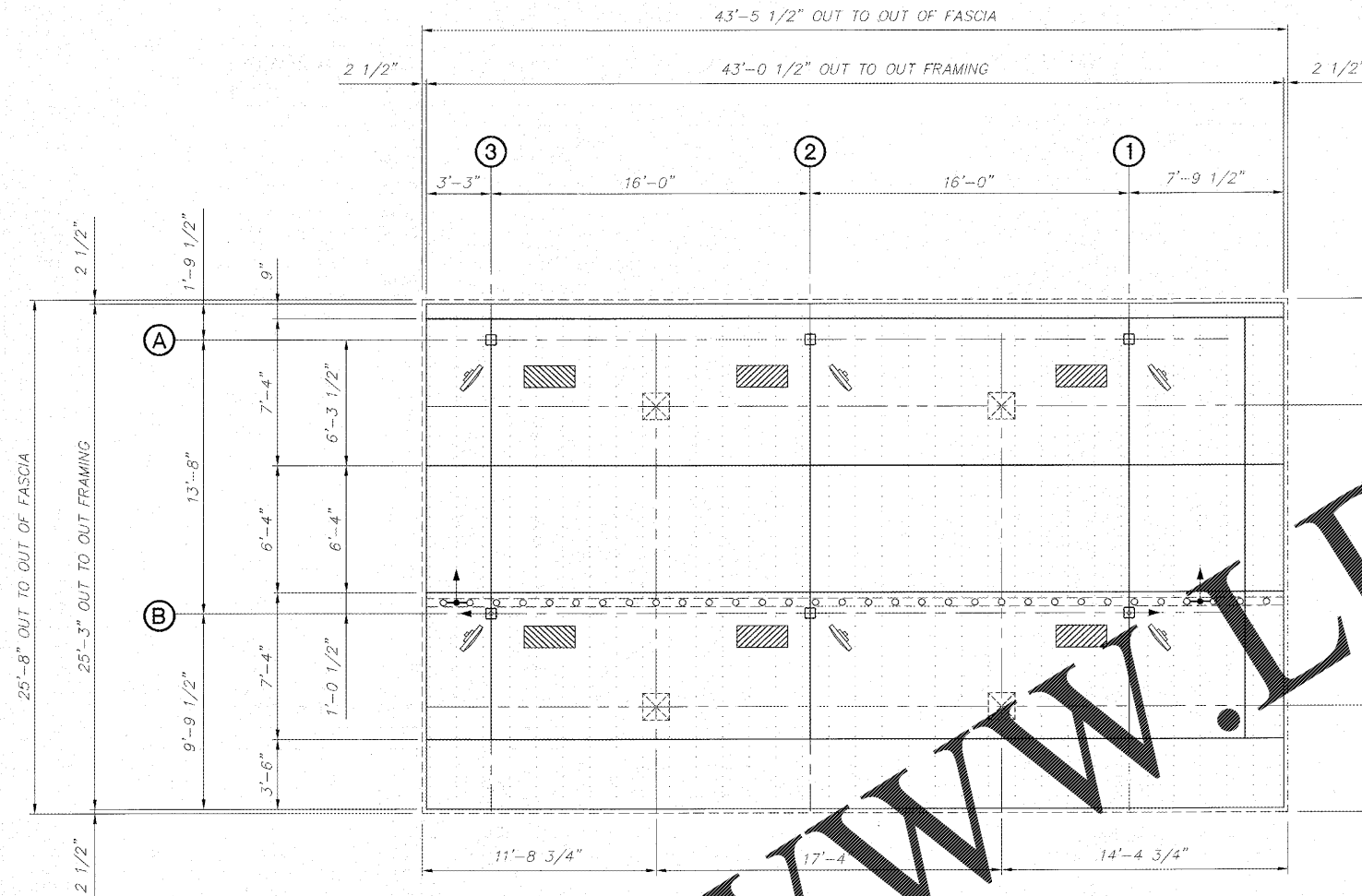


LANE 1 ENTRANCE

LANE 2 ENTRANCE

LANE 1 EXIT

LANE 2 EXIT



WWW.LDILine.com

FI CANOPY LIGHT LAYOUT

1/4" = 1'-0"

1. THE LIGHT LAYOUT IS A SUGGESTED PLAN ONLY. IT IS PROVIDED BY LANE AS A SERVICE TO ITS CUSTOMER AND IS TO BE USED AS A GUIDE ONLY.
2. THESE LIGHT FIXTURES NEED TO BE CENTERED IN DECK PANELS.
3. ENSURE ADEQUATE CLEARANCE FROM STRUCTURAL MEMBERS PRIOR TO CUTTING DECK.
4. INSTALLATION OF FIXTURES TO BE DONE IN ACCORDANCE WITH MANUFACTURERS INSTRUCTIONS AND RECOMMENDATIONS.
5. IF LIGHTS INTERFERE WITH LEADER GUTTERS MOVE ROW LIGHTS TO THE NEXT DECK.

LEGEND:

☒ INDICATES LSI CRUS-SC-LED-LW-30-CW-UE-WHT CANOPY DECK LIGHTS.

⋯ INDICATES DECK STITCHES.

MOUNTED FAN/HEATERS
(BY OTHER)
RE: LIGHTS FOR
MOUNTING SUPPORT

⊘ INDICATES MOUNTED FAN

▨ INDICATES MOUNTED HEATER

A1 GENERAL NOTES

N.T.S.

A6 NOT USED

N.T.S.

A10 NOT USED

N.T.S.



Chick-fil-A
Chick-fil-A
5200 Buffington Road
Atlanta, Georgia 30349-2998

LANE SUPPLY, INC.
120 FAIRVIEW
ARLINGTON, TX. 76010
(817) 261-9116

SEAL:



OCT 24 2017

CHICK-FIL-A
SAR South Cobb Dr FSR
3100 South Cobb Dr SE
Smyrna, GA 30080

FSR# 00810

REVISION SCHEDULE

NO.	DATE	DESCRIPTION

CONSULTANT PROJECT # 59683

PRINTED FOR Permit

DATE 2017/10/20

DRAWN BY JH

CHECKED BY DTM

Information contained on this drawing and in all digital files produced for above named project may not be reproduced in any manner without express written or verbal consent from authorized project representative.

SHEET CANOPY LIGHT LAYOUT

SHEET NUMBER

F2FC-9

LLI OF 1