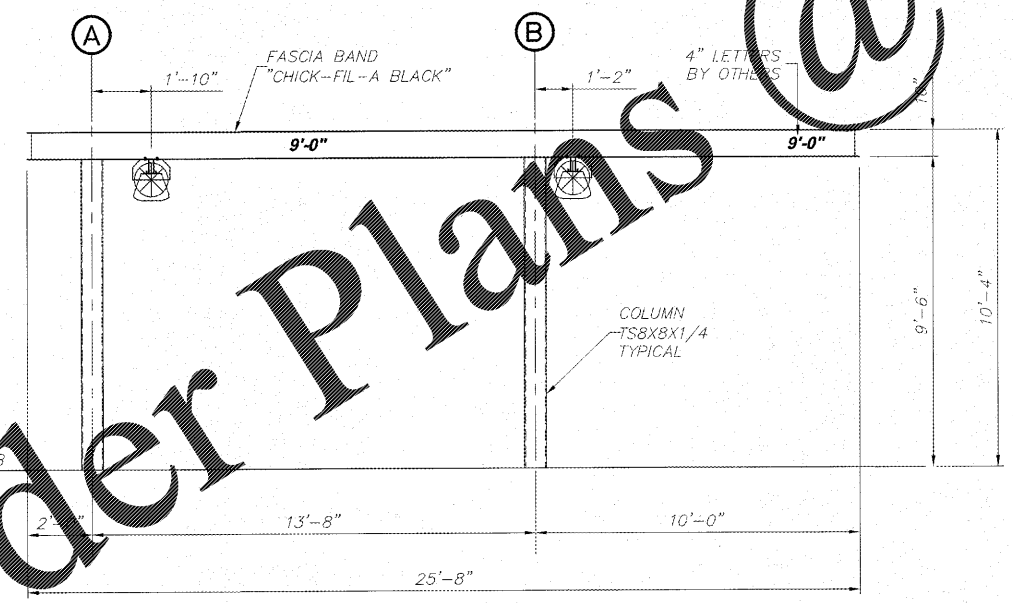


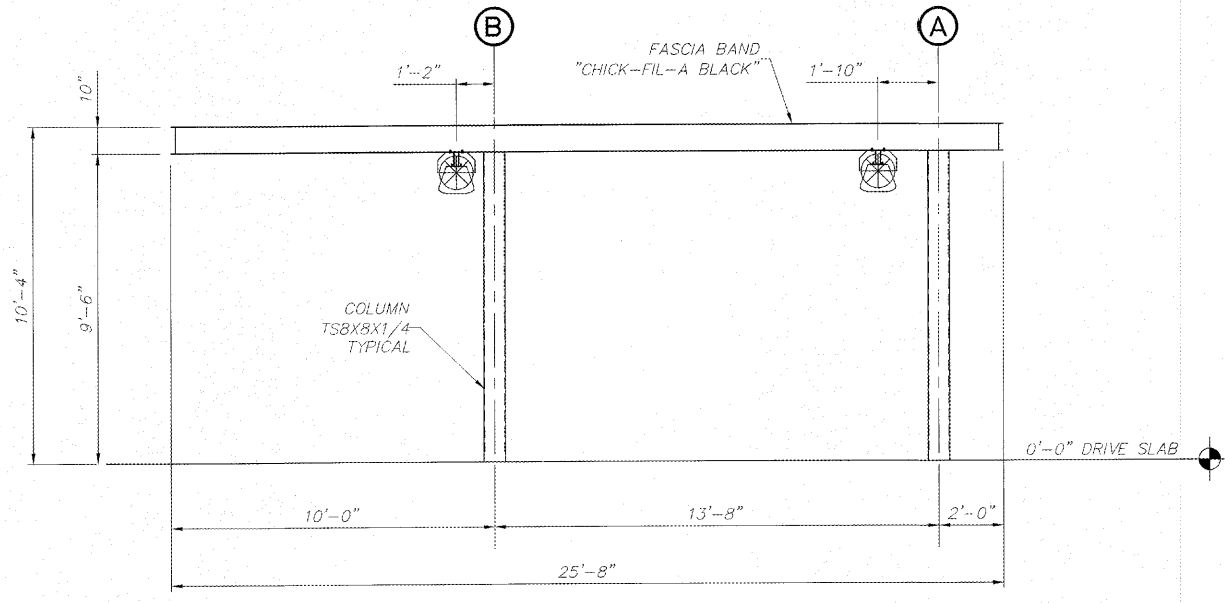
HI CANOPY SIDE ELEVATION

1/4" = 1'-0" FI-ABI, FI-EI, FI-LLI



AI CANOPY END ELEVATION

1/4" = 1'-0" FI-ABI, FI-EI, FI-LLI



A9 CANOPY END ELEVATION

1/4" = 1'-0" FI-ABI, FI-EI, FI-LLI

www.LDILine.com  
 Chick-fil-A  
 5200 Buffington Road  
 Atlanta, Georgia 30349-2998  
**LANE**  
 SUPPLY, INC.  
 120 FAIRVIEW  
 ARLINGTON, TX. 76010  
 (817) 261-9116  
 SEAL:  
 GEORGIA REGISTERED PROFESSIONAL ENGINEER  
 RICHARD D. McCASKEY  
 OCT 24 2017

**CHICK-FIL-A**  
 SAR South Cobb Dr FSR  
 3100 South Cobb Dr SE  
 Smyrna, GA 30080

FSR# 00810

REVISION SCHEDULE		
NO.	DATE	DESCRIPTION

CONSULTANT PROJECT #	59683
PRINTED FOR	Permit
DATE	2017/10/20
DRAWN BY	JH
CHECKED BY	DTN

SHEET CANOPY ELEVATION PLAN  
 SHEET NUMBER F2FC8