



Chick-fil-A
5200 Buffington Road
Atlanta, Georgia
30349-2998



TriMark
Foodservice Equipment, Supplies and Design
STRATEGIC

CHICK-FIL-A
SOUTH COBB DRIVE
3100 South Cobb Dr SE, Smyrna GA 30080

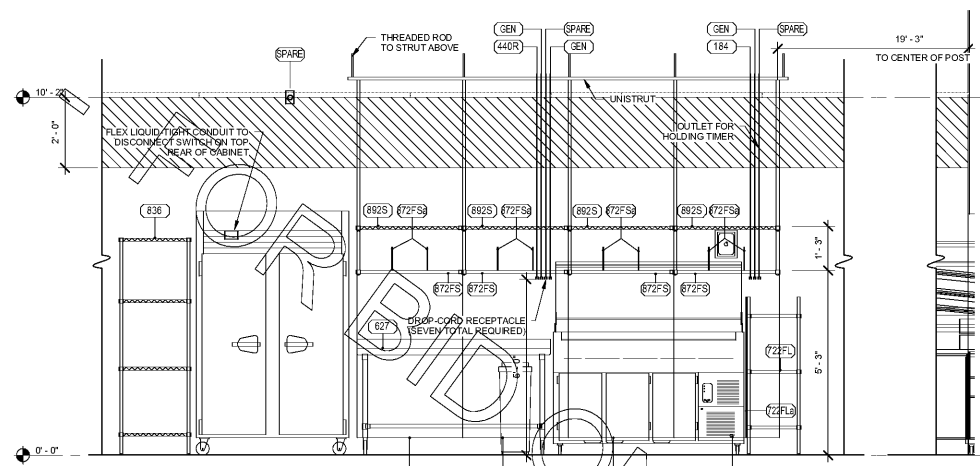
FSR# 00810

REVISION SCHEDULE		
NO.	DATE	DESCRIPTION

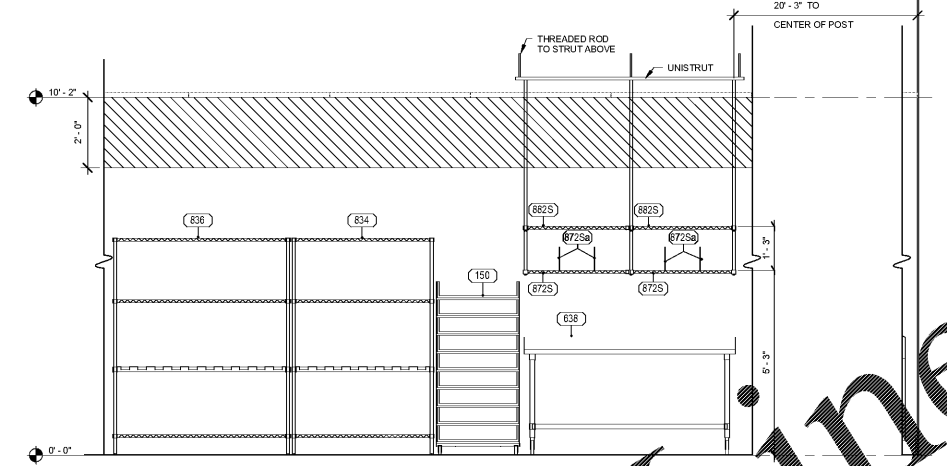
CURRENT TEMPLATE: SOB-V6
UPDATE APPL. ED: 00610
ARCHITECT TO PROJECT #:
PRINTED FOR: BID
DATE: 02/05/2018
DRAWN BY:

Information contained on this drawing and to all rights there included for which no liability shall be assumed in any manner without written or verbal consent from authorized design representative.
SHEET: ELECTRICAL ROUGH-IN ELEVATIONS
SHEET NUMBER:

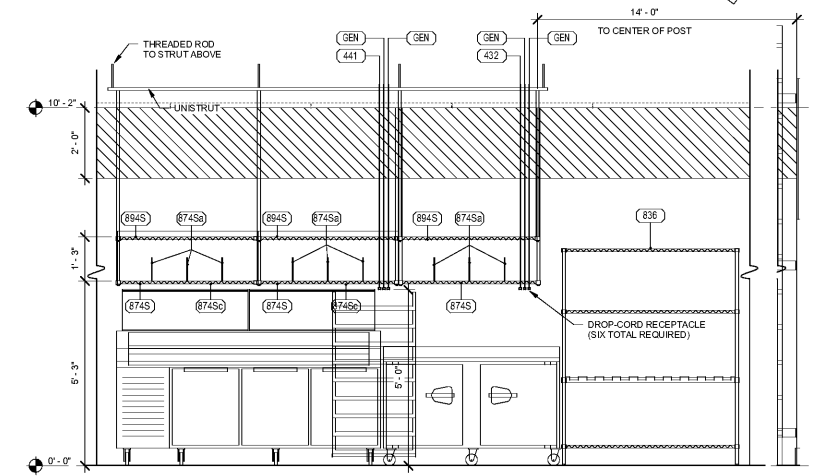
K-303



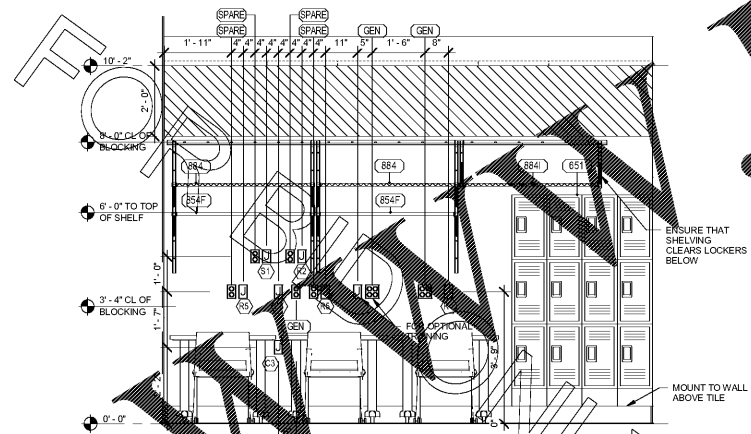
1 KITCHEN
1/2" = 1'-0"



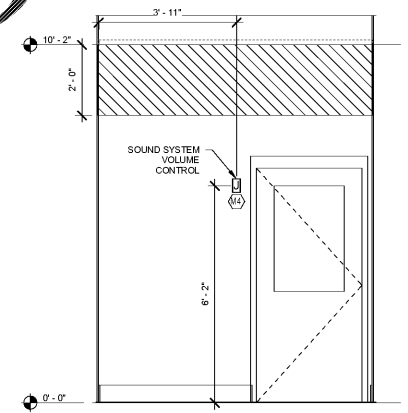
2 KITCHEN
1/2" = 1'-0"



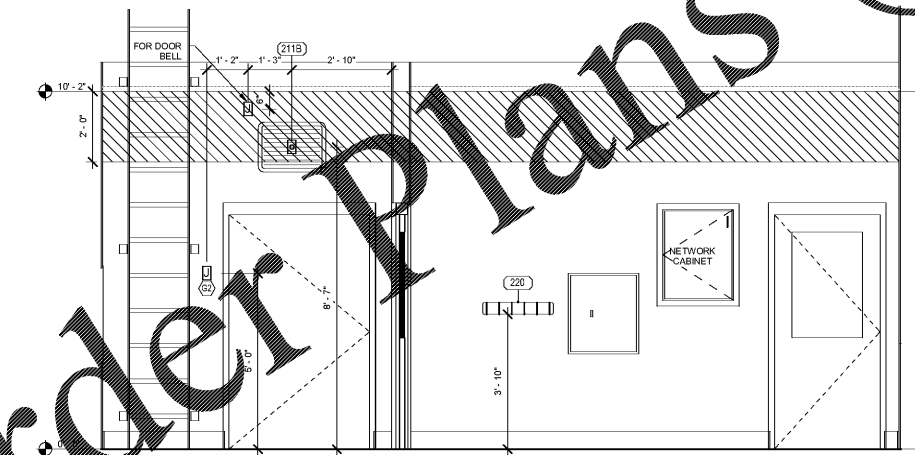
3 KITCHEN
1/2" = 1'-0"



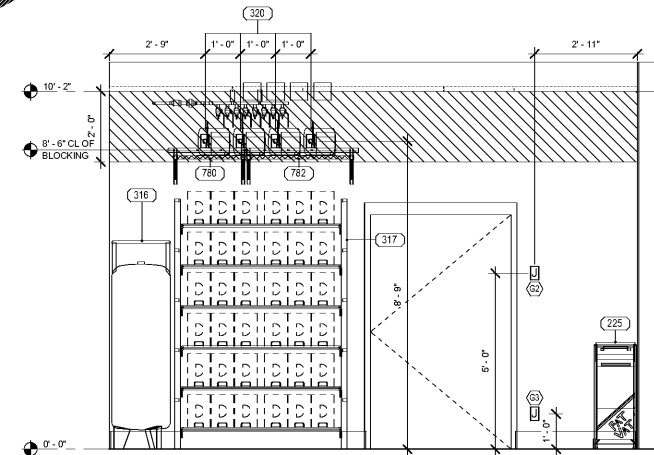
4 MULTI - PURPOSE AREA
1/2" = 1'-0"



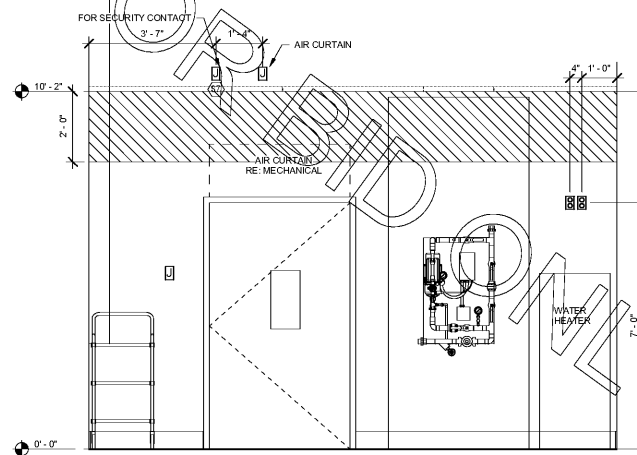
5 MULTI - PURPOSE AREA
1/2" = 1'-0"



6 MULTI - PURPOSE AREA
1/2" = 1'-0"



7 UTILITY
1/2" = 1'-0"



8 UTILITY
1/2" = 1'-0"

ELEVATION LEGEND	
(882A)	EQUIPMENT NUMBER
(C)	INDICATES NOTE ON SHEET 02
(J)	JUNCTION BOX
(R)	RECEPTACLE
(S)	SPECIAL RECEPTACLE
(T)	TEMPERATURE SENSOR
(H)	HUMIDITY SENSOR
(D)	SMOKE DETECTOR LED (2 GANG BOX)
(SK)	SECURITY KEYPAD

Order Plans @

2/5/2018 4:48 PM