

FOR BID ONLY

FOR BID ONLY

Order Plans @ WWW.DIline.com



Chick-fil-A  
5200 Buffington Road  
Atlanta, Georgia 30349-2998

**INTERPLAN**  
ARCHITECTURE  
ENGINEERING  
INTERIOR DESIGN  
PROJECT MANAGEMENT

604 COURTLAND STREET  
SUITE 100  
ORLANDO, FLORIDA 32804  
PH 407.645.5008  
FX 407.629.9124

SEAL:  
THIS DOCUMENT IS NOT FOR CONSTRUCTION  
UNLESS THE ARCHITECT OR ENGINEER'S  
SIGNATURE AND SEAL APPEAR BELOW.

**CHICK-FIL-A**  
**P12\_LC\_LE\_LS\_SE**  
**SAR South Cobb Drive FSR**  
**3100 South Cobb Dr SE, Smyrna, GA 30080**

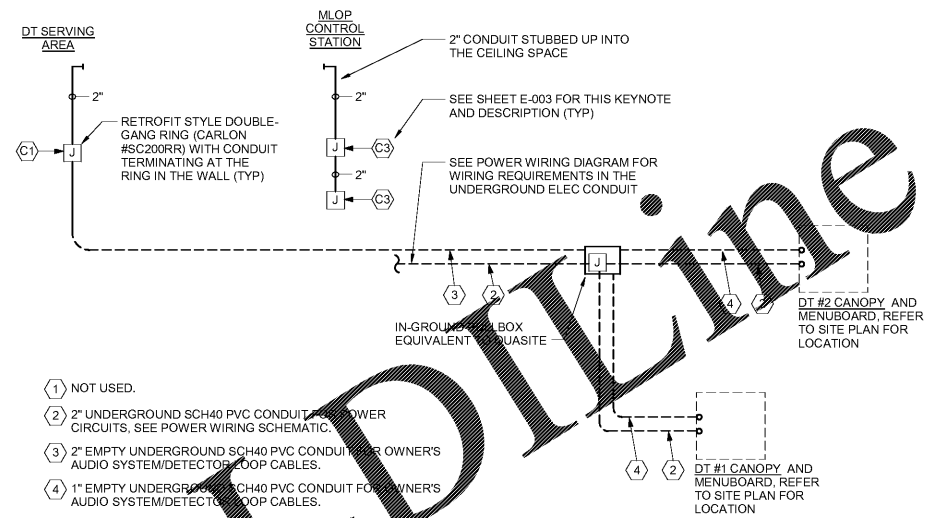
**FSR# 00810**

REVISION SCHEDULE  
NO. DATE DESCRIPTION

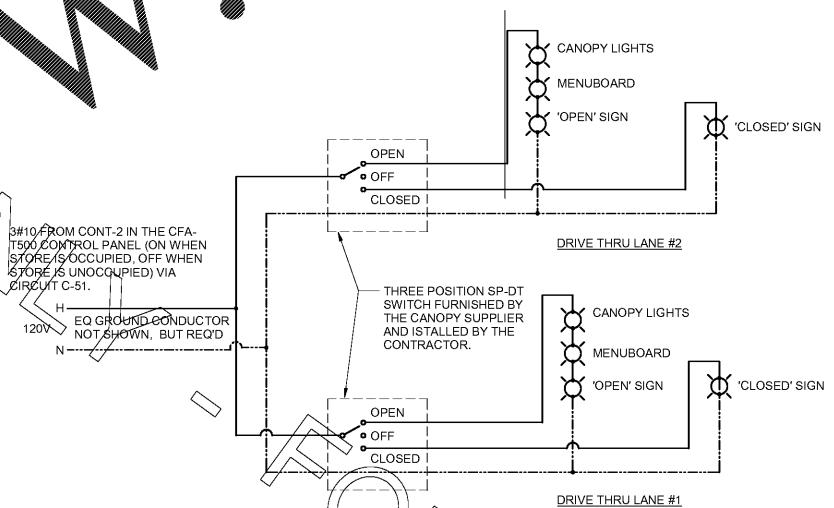
CONSULTANT PROJECT # 2017.0165  
PRINTED FOR BID  
DATE September 06, 2017  
DRAWN BY MI

SHEET  
DT ORDERING AREA  
DETAILS AND REFUSE  
ENCLOSURE PLAN  
SHEET NUMBER

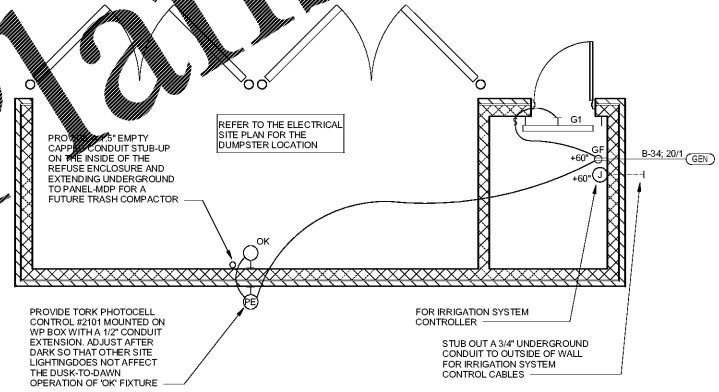
**E-303**



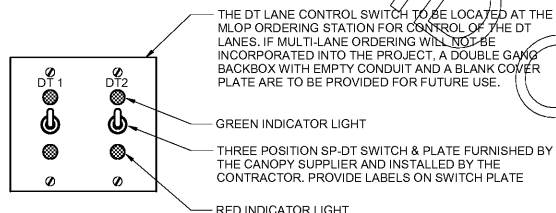
**MULTI-LANE DRIVE-THRU ORDER AREA CONDUIT REQUIREMENTS**



**MULTI-LANE DRIVE-THRU ORDER AREA CANOPY POWER WIRING SCHEMATIC**



**A3 REFUSE ENCLOSURE ELECTRICAL PLAN**  
1/4" = 1'-0"



**3 POSITION DT LANE CONTROL STATION**

**A1 MLOP DRIVE-THRU REQUIREMENTS**  
NO SCALE

2/5/2018 4:27:58 PM

COPYRIGHT © 2017 INTERPLAN, LLC. REVISIONS, CORRECTIONS & OTHER REQUIREMENTS MUST BE DOCUMENTED TO THE ORIGINAL SET OF PAPER OR WHICH THEY WERE PREPARED. REPRODUCTIONS, CHANGES OR ADJUSTMENTS ARE PROHIBITED.