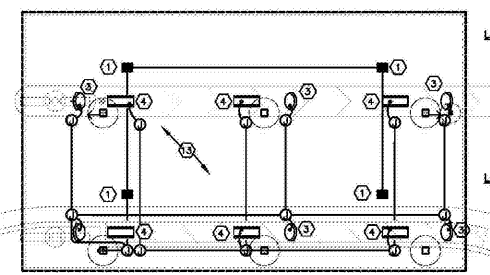


DUAL DRIVE-THRU CANOPY POWER PLAN - UNDERGROUND
SCALE 1/8" = 1'-0"



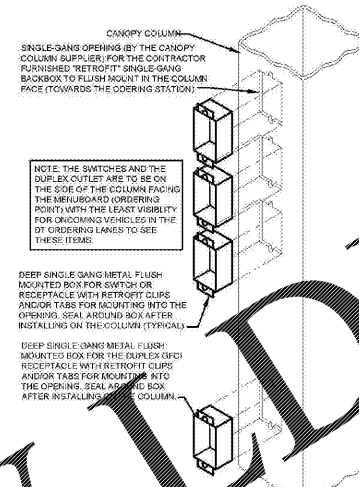
DUAL DRIVE-THRU CANOPY POWER PLAN - ABOVE GROUND
SCALE 1/8" = 1'-0"

- ELECTRICAL KEYNOTES (NEW ORDER POINTS):**
- CEILING LIGHT PROVIDED BY CANOPY SUPPLIER AND INSTALLED BY E.C.
 - NOT USED.
 - AIR CIRCULATING FAN WITH INTEGRAL ON-OFF SWITCH PROVIDED BY OTHERS.
 - INFRARED GAS HEATER WITH INTEGRAL ON-OFF SWITCH PROVIDED BY OTHERS.
 - MENUBOARD PROVIDED BY OTHERS.
 - PROVIDE IN-GROUND QUASITE PULLBOX FOR MLOP DATA CABLES WITH POWER NEMA 3R JUNCTION BOX MOUNTED INSIDE THE PULLBOX.
 - 2" UNDERGROUND SCH40 PVC CONDUIT WITH POWER CONDUCTORS, SEE WIRING SCHEMATIC.
 - 2" EMPTY UNDERGROUND SCH40 PVC CONDUIT FOR OWNERS AUDIO SYSTEM/DETECTOR LOOP CABLES.
 - 2" EMPTY UNDERGROUND SCH40 PVC CONDUIT FOR OWNERS AUDIO SYSTEM/DETECTOR LOOP CABLES.
 - INSTALL UNDERGROUND 3" SCH40 PVC CONDUIT UP INTO THE CANOPY COLUMN WITH TYPE MC CABLE (GALVANIZED STEEL WITH PVC JACKET) RUN WITHIN FOR THE 120V POWER FOR LIGHTS, 120 VOLT POWER FOR FANS, AND 24 VOLT POWER FOR THE INFRARED GAS HEATERS.
 - NOT USED.
 - PROVIDE ONE DUPLEX GFCI WITH IN-USE WP COVER PLATE AND THREE 120V SINGLE-POLE SWITCHES (EACH WITH HUBBELL HW5250 WP COVER PLATE) MOUNTED ON THE COLUMN IN FLUSH MOUNTED METAL SINGLE GANG BOXES FOR LOCAL ON-OFF CONTROL OF THE FAN HEATERS AND CANOPY LIGHTS. SEE WIRING SCHEMATIC AND CANOPY COLUMN DETAILS FOR FURTHER INFORMATION. ALL SURFACE MOUNTED ITEMS AND COVER PLATES TO BE FIELD PAINTED MATTE BLACK.
 - ALL CONDUIT AND BOXES SHALL BE CONCEALED FROM NORMAL VIEW, UNDERGROUND IN COLUMNS OR ABOVE THE CANOPY ON THE ROOF. MC CABLE (GALVANIZED STEEL WITH PVC JACKET) TO BE USED INSIDE THE COLUMNS, BUT MUST CONVERT BACK TO IMC ABOVE THE ROOF. REFER TO THE MECHANICAL DRAWINGS FOR DETAILS OF MOUNTING CONDUIT TO THE ROOF OF THE CANOPY. ALL EXPOSED ELECTRICAL BOXES TO BE NEMA 3R ST-METAL.

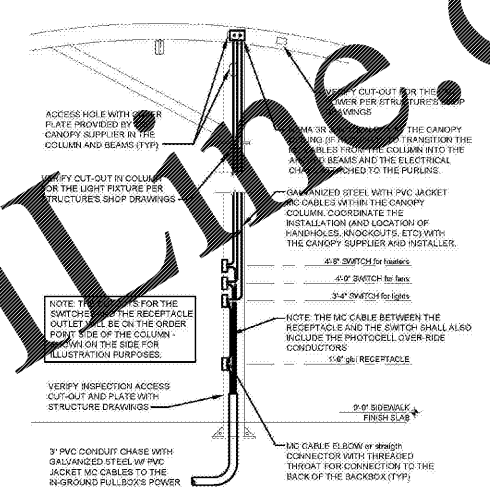
NOTES FOR ALL CONDUITS REFER TO LANS FOR OTHER CONDUITS REFER TO MECHANICAL DRAWINGS FOR CONDUIT AND WIRING SEE MECHANICAL DRAWINGS FOR VOLTAGE SYSTEMS AND CONTROL WIRING.

MULTIPLE IN-GROUND CONDUITS OCCUPY THE CONDUIT IN ACCORDANCE WITH THE NEC. MULTIPLE TRAYS ARE NOT PERMITTED.

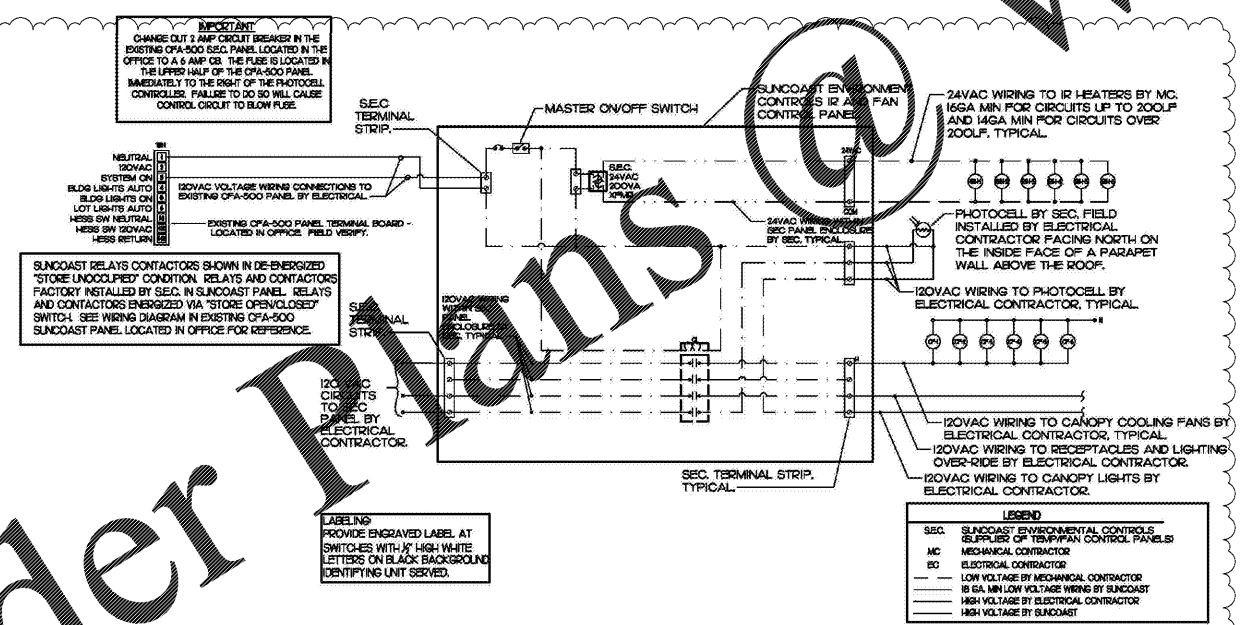
LOW VOLTAGE AND CONTROL WIRING SHALL BE IN SEPARATE CONDUIT FROM POWER.



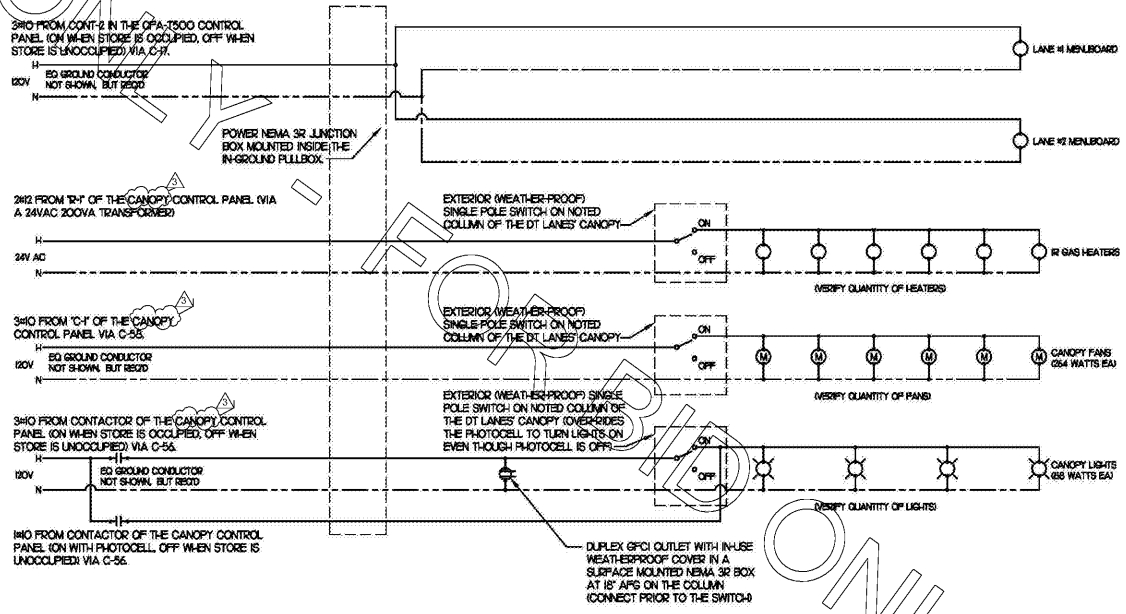
CANOPY COLUMN ISOMETRIC
NOT TO SCALE



SECTION - DOUBLE LANE CANOPY COLUMN
NOT TO SCALE



SUNCOAST PSNEL WIRING DIAGRAM DBL LANE ORDER POINT-INFRARED, COOLING FANS
SCALE 1/4" = 1'-0"



DUAL DT LANES CANOPY POWER WIRING SCHEMATIC - NEW MLOP
NO SCALE

Chick-fil-A
5200 Buffington Road
Atlanta, Georgia 30349-2998

INTERPLAN
ARCHITECTURE
ENGINEERING
INTERIOR DESIGN
PROJECT MANAGEMENT

404 COURTLAND STREET SUITE 100
ORLANDO, FLORIDA 32804
PH 407.645.8028
FX 407.629.9124

SEAL: THIS DOCUMENT IS NOT FOR CONSTRUCTION UNLESS THE ARCHITECT OR ENGINEER'S SIGNATURE AND SEAL ARE SHOWN BELOW.

CHICK-FIL-A
P12_LS
SAR South Cobb Drive FSR
3100 South Cobb Dr SE, Smyrna, GA 30080

FSR# 00810

NO.	DATE	DESCRIPTION
3	12.12.17	COORDINATION REVISIONS

CONSULTANT PROJECT #	2017.0165
PRINTED FOR	BID
DATE	September 06, 2017
DRAWN BY	MI

SHEET ELECTRICAL PLAN -F2F

SHEET NUMBER **E-222**

Order Plans
2/5/2018 4:44 PM