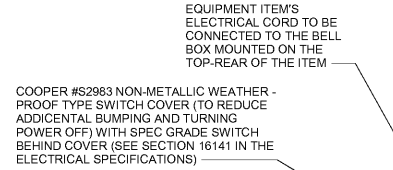
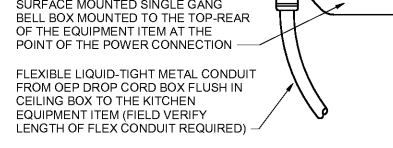


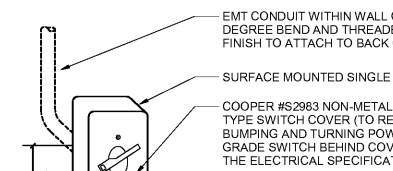
D4 INTERIOR PVC CONDUIT DETAIL
NO SCALE



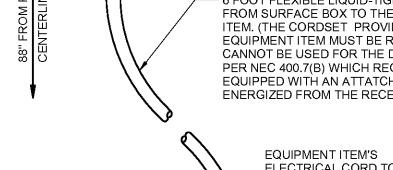
D COOPER #S2983 NON-METALLIC WEATHER-PROOF TYPE SWITCH COVER (TO REDUCE ADDITIONAL BUMPING AND TURNING POWER OFF) WITH SPEC GRADE SWITCH BEHIND COVER (SEE SECTION 16141 IN THE ELECTRICAL SPECIFICATIONS)



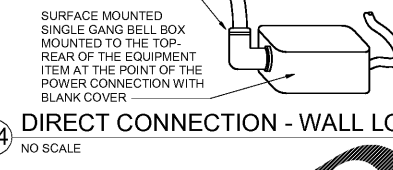
C4 DIRECT CONNECTION - ISLAND LOCATION
NO SCALE



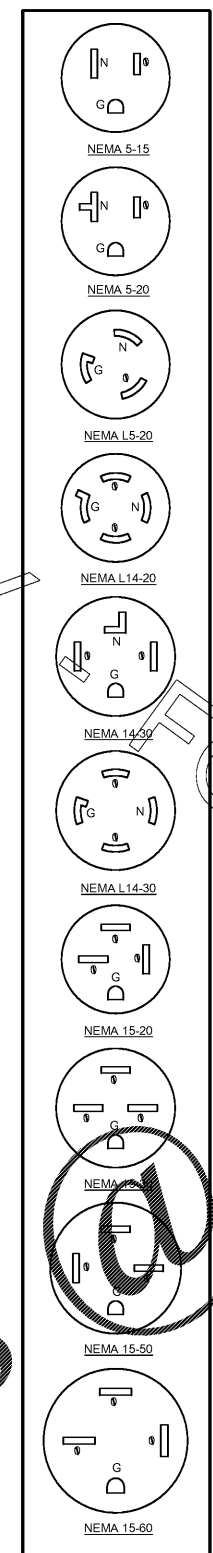
C COOPER #S2983 NON-METALLIC WEATHER-PROOF TYPE SWITCH COVER (TO REDUCE ADDITIONAL BUMPING AND TURNING POWER OFF) WITH SPEC GRADE SWITCH BEHIND COVER (SEE SECTION 16141 IN THE ELECTRICAL SPECIFICATIONS)



B4 DIRECT CONNECTION - WALL LOCATION
NO SCALE



A3 ANSUL SYSTEM PANEL WIRING DIAGRAM
NO SCALE



KITCHEN EQUIPMENT SCHEDULE - CHICK-FIL-A P12 EDITION

VERIFY THE QUANTITY AND ROUGH-IN OF EACH EQUIPMENT ITEM WITH THE KITCHEN EQUIPMENT SCHEDULE ON SHEETS K201 AND K202

SCHEDULE NOTES	EQUIP. NO.	BLDG TYPE				EQUIPMENT DESCRIPTION	ELECTRICAL LOAD				NEMA CONFIG	COOPER/ARROW HART (UON) RECEPT CATATOG NO.	Wire/Conduit MARK NO.	COMMENTS AND REMARKS	
		LS	LE	LC	SE		VOLTS	PH	WIRES	KW					AMPS
	120	X	X	X	X	HOT HOLDING CL TABLE	208	3	4	5.040	22/12.5/7.5	DIRECT	-	18	LISTED LOAD INCLUDES PLUG-IN ITEMS
	120a	X	X	X	X	COLD CL TABLE	208	3	4	3.280	6.5/13.3/7.83	DIRECT	-	18	LISTED LOAD INCLUDES PLUG-IN ITEMS
	120c	X	X	X	X	TOASTER CL TABLE	208	3	4	18.600	56.6/41.8/56.6	DIRECT	-	18	LISTED LOAD INCLUDES PLUG-IN ITEMS
	120d	X	X	X	X	CL UNDERCOUNTER REFRIG	120	1	2	0.580	5.0	N/A	FURNISHED IN #120a	-	-
	500A	X	X	X	X	VERTICAL CONTACT TOASTER	120	1	2	1.800	15.0	N/A	FURNISHED IN #120c	-	-
	500B	X	X	X	X	RADIANT TOASTER	208	1	3	5.000	24.0	N/A	FURNISHED IN #120c	-	-
	550	X	X	X	X	DOUBLE WARMING DRAWER	120	1	2	0.900	7.83	N/A	FURNISHED IN #120	-	-
	564	X	X	X	X	PRODUCT HOLDING CABINET	120	1	2	1.600	13.3	N/A	FURNISHED IN #120a	-	-
	180	X	X	X	X	ORDER REGISTER (POS)	120	1	2		0.7	5-20R	IG5362RN (ORANGE)	1-IG	
	182	X	X	X	X	RECEIPT PRINTER	120	1	2		0.18	5-20R	IG5362RN (ORANGE)	1-IG	
	NOTE 5	183	X	X	X	ORDER MONITOR	120	1	2		0.125	5-20R	IG5362RN (ORANGE)	1-IG	
	NOTE 2 OR 5	184	X	X	X	IPAD	120	1	2	0.120	1.0	5-20R	VG20	1	
	NOTE 2	190	X	X	X	DRIVE-THRU VIDEO MONITOR	120	1	2		0.8	5-20R	CR20	1	
	NOTE 5	211b	X	X	X	FLY SYSTEM - KITCHEN AREA	120	1	2	0.078	0.650	5-15R	TR780W (DUPLEX)	1	CLOCK RECEPTABLE RECD
		211c	X	X	X	FLY SYSTEM - DINING AREA	120	1	2	0.030	0.25	5-15R	TR780W (DUPLEX)	1	CLOCK STYLE RECEPTABLE
		269	X	X	X	ANSUL FIRE SYSTEM	120	1	2			VERIFY	DIRECT	-	FROM CFA CONTROL PANEL
		270	X	X	X	ANSUL FIRE SYSTEM	120	1	2			VERIFY	DIRECT	-	FEED FROM CFA-TS CONTROL PANEL
	NOTE 2	300a	X	X	X	MILKSHAKE DISPENSER	120	1	2		4.0	5-20R	1877 (SIMPLEX)	1	
		300X	X	X	X	DOUBLE BARREL ICE DREAM	208	3	3		15.0	15-20R	HUBBELL HBL8450A	2	FURNISHED WITH ANGLE PLUG
	NOTE 2	305	X	X	X	TEA BREWER	120	1	2	1.650	13.8	5-20R	VG20	1	FURNISHED WITH ANGLE PLUG
		308	X	X	X	COFFEE BREWER	208	1	3	4.000	19.2	L14-30R	CWL1430R	8	FURNISHED WITH ANGLE PLUG
		308d	X	X	X	DRY & DAIRY DISPENSER	120	1	2		1.0	5-20R	CR20	1	
	NOTE 2	310	X	X	X	DOUBLE JUICE DISPENSER	120	1	2		8.2	5-20R	1877 (SIMPLEX)	1	
		315W	X	X	X	DRINK TOWER	120	1	2		10.0	5-20R	1877 (SIMPLEX)	1	
	NOTE 2	320	X	X	X	TURBO CARBONATOR	120	1	2		6.2	5-20R	1877 (SIMPLEX)	1	
		363	X	X	X	DISHMACHINE	208	3	4		49.0	-	DIRECT	18	CONNECT UNIT'S FLEXIBLE "WHIP" TO WALL J-BOX
		380A	X	X	X	ICE BIN SANITATION SYSTEM	120	1	2		1.0	5-15R	-	-	PLUGS INTO DUPLEX OF ONE #380Z UNIT
	NOTE 5	380Z	X	X	X	INTERIOR ICE MAKER	120	1	2		6.0	5-15R	817 (SIMPLEX) CR15 (DUPLEX)	1	
		380ZC	X	X	X	ROOF MTD ICE CONDENSER	208	3	4		21.2	DIRECT	-	12	
	NOTE 2	400	X	X	X	REACH-IN FRY FREEZER	120	1	2		9.4	5-20R	VG20	1	
	NOTE 5	401	-	-	-	48" FRY FREEZER WORK TABLE	120	1	2		8.7	L5-20R	CWL520R	1	PROVIDE TWIST LOCK PLUG IN FIELD
	NOTE 5	402	X	-	-	60" FRY FREEZER WORK TABLE	120	1	2		8.7	L5-20R	CWL520R	1	PROVIDE TWIST LOCK PLUG IN FIELD
		410	X	X	X	WALK-IN FREEZER DOOR HTRLTGS	120	2			3.3	DIRECT	-	1	REFER TO LIGHTING FLOOR PLAN
		410a	X	X	X	WI FREEZER CONDENSER	208	3	3		14.38	DIRECT	-	8	
		410b	X	X	X	WI FREEZER EVAP COOL	208	1	2		1.5	DIRECT	-	1	POWER FED FROM CONDENSER
	NOTE 5	426	X	X	X	SINGLE UOIL REFRIGERATOR	120	1	2		4.7	5-20R	1877 (SIMPLEX)	1	
	NOTE 2	431	X	X	X	DOUBLE UC REFRIGERATOR	120	1	2		6.3	5-20R	1877 (SIMPLEX)	1	
	NOTE 2	431	X	X	X	TRIGERATED WORK TABLE	120	1	2		6.3	5-20R	1877 (SIMPLEX)	1	
	NOTE 5	432	X	X	X	TRIGERATED WORK TABLE	120	1	2		6.3	L5-20R	CWL520R	1	PROVIDE TWIST LOCK PLUG IN FIELD
	NOTE 2	440	X	X	X	BREAST FEED TABLE	120	1	2		12.0	(L)5-20R	CWL520R / VG20	1	
	NOTE 5	441	X	X	X	REFRIGERATOR TO PREP	120	1	2		9.0	L5-15R	CWL515C / CWL515R	1	15 AMP TWIST LOCK PLUG PROVIDED W/ EQUIP
		444	X	X	X	DOUBLE DOOR FREEZING CABINET	120	1	2		16.0	DIRECT	-	1	PROVIDE 6 FT LIQUID-TIGHT FLEX CONDUIT
		444S	-	-	-	DOOR THAWING CABINET	120	1	2		16.0	DIRECT	-	1	
		449	X	X	X	WALK-IN COOLER LIGHTING	120	1	2		2.4	DIRECT	-	1	REFER TO LIGHTING FLOOR PLAN
		459a	X	X	X	WI COOLER CONDENSER	208	3	3		5.75	DIRECT	-	3	
		459b	X	X	X	WI COOLER EVAP COOL	208	1	2		1.0	DIRECT	-	1	POWER FED FROM CONDENSER
		505	X	X	X	CONVECTION OVEN	208	3	3	5.600	24/12/15	15-30R	AH8430N	9	PROVIDE ANGLE PLUG ON CORDSET
		505G	X	X	X	GRIDDLE TOP CONVECTION OVEN	208	3	3	19.800	57.6	15-60R	AH8460N	17	PROVIDE 6 FT CORD AND ANGLE PLUG
		521	X	X	X	WARMING EYES	208	1	3	3.900	18.8	6-30R	5700N	8	PROVIDE 6 FT CORD AND PLUG
	NOTE 3	522	X	X	X	OPEN FRYER - ELECTRIC	208	3	3	22.000	61.0	NOTE 3	-	22	PLUG AND CORD-SET PROVIDED W/ EQUIP
	NOTE 3	522A	X	X	X	DOUBLE OPEN FRYER - REQUIRES TWO ELECTRICAL CONNECTIONS EACH OF THE SAME LOAD AND CHARACTERISTICS AS #522 ABOVE	208	3	3	13.500	38.0	15-50R	HUBBELL HBL8450A	14	PLUG AND CORD-SET PROVIDED W/ EQUIP
		523	X	X	X	PRESSURE FRYER - ELECTRIC	208	3	3	13.500	38.0	15-50R	HUBBELL HBL8450A	14	PLUG AND CORD-SET PROVIDED W/ EQUIP
		524	X	X	X	DUAL SIDED CHAR-GRILL	208	3	3	16.050	43.4/43.4/47	15-50R	HUBBELL HBL8450A	14	
	NOTE 2	560	X	X	X	FRY HOLDING STATION	120	1	2	5.840	15.4	5-20R	1877 (SIMPLEX)	1	
	NOTE 5	563D	X	X	X	DOUBLE SANDWICH SLIDE	120	1	2	1.090	9.12	5-20R	1877 (SIMPLEX)	1	
	NOTE 5	563S	X	X	X	SINGLE SANDWICH SLIDE	120	1	2	0.548	4.56	5-20R	1877 (SIMPLEX)	1	
	NOTE 2	565C	X	X	X	FOOD COOKER/WARMER	120	1	2	1.500	13.20	5-20R	VG20	1	
		580	X	X	X	MULTI-USE HOLDING CABINET	120	1	2	2.880	24.0	L5-30R	CWL530R	7	
	NOTE 5	600	X	X	X	MIXER	120	1	2		8.0	L5-20R	CWL520R	1	PROVIDE TWIST LOCK PLUG IN FIELD
	NOTE 5	601	X	X	X	1 HP FOOD CUTTER	120	1	2		16.0	L5-20R	CWL520R	1	PROVIDE TWIST LOCK PLUG IN FIELD
	NOTE 2	607	X	X	X	JUICER WORK STATION	120	1	2		3.000	5-20R	VG20	1	PROVIDE GFCI DUPLEX RECEPTACLE
		669	X	X	X	OFFICE SAFE (SMART SAFE)	120	1	2		5.000	5-20R	CR20	1	
	NOTE 2	671	X	X	X	SMALL MENU BOARD	120	1	2	0.054	0.45	5-20R	CR20	1	

NOTE 1: ALL SO CORD LENGTHS SHALL BE MEASURED FROM THE REAR OF THE EQUIPMENT TO THE END OF THE CORD.

NOTE 2: CONTRACTOR SHALL PROVIDE GROUND-FAULT PROTECTION FOR ALL 120 VOLT 15 AMP AND 20 AMP RECEPTACLES IN THE KITCHEN / FOOD PREPARATION AREAS. GROUND-FAULT PROTECTION SHALL BE PROVIDED AT THE RECEPTACLE AS A GFCI TYPE RECEPTACLE UNLESS NOTED OTHERWISE ON THE PLANS WHERE A GFCI TYPE BREAKER IS INDICATED.

NOTE 3: A RECESSED PIN & SLEEVE BOX IS PROVIDED WITH THE EXHAUST HOOD PACKAGE AND INSTALLED BY THE CONTRACTOR. THE P&S BOX INCLUDES THE "SLEEVE" RECEPTACLES FOR THE OPEN FRYERS. THE OPEN FRYER SUPPLIER WILL PROVIDE PRE-WIRED CORDSET WITH A "PIN" DEVICE INTEGRAL WITH THE OPEN FRYER TO PLUG INTO THE "SLEEVE" RECEPTACLE.

NOTE 4: WIRE NUMBER INDICATED DOES NOT INCLUDE THE REQUIRED GREEN EQUIPMENT GROUND CONDUCTOR OR, WHEN APPLICABLE, THE STRIPED IG CONDUCTOR.

NOTE 5: PROVIDE GFCI TYPE BRANCH BREAKER FOR KITCHEN/FOOD PREPARATION AREA RECEPTACLES THAT ARE TWIST-LOCK, CLOK STYLE, OR IG (ISOLATED GROUND) TYPE.

NOTE 6: REFER TO THE CONDUIT AND CONDUCTOR SCHEDULE FOR THE WIRE/CONDUIT MARK NUMBER AND THE MINIMUM WIRE AND CONDUIT SIZE FOR EACH EQUIPMENT ITEM.



Chick-fil-A
5200 Buffington Road
Atlanta, Georgia 30349-2998

INTERPLAN
ARCHITECTURE
ENGINEERING
INTERIOR DESIGN
PROJECT MANAGEMENT

604 COURTLAND STREET SUITE 100
ORLANDO, FLORIDA 32804
PH 407.645.5008
FX 407.629.9124

SEAL: THE SIGNATURE IS NOT FOR CONSTRUCTION UNLESS THE ARCHITECT OR ENGINEER'S SIGNATURE AND SEAL APPEAR BELOW.

CHICK-FIL-A
P12_LC_LE_LS_SE
SAR South Cobb Drive FSR
3100 South Cobb Dr SE, Smyrna, GA 30080

FSR# 00810

NO.	DATE	DESCRIPTION

CONSULTANT PROJECT # 2017.0165
PRINTED FOR BID
DATE September 06, 2017
DRAWN BY MI

Information contained on this drawing and in all digital files provided for design transfer shall not be reproduced in any manner without express written or verbal consent from the original project representative.

ELECTRICAL SCHEDULES AND DETAILS

SHEET NUMBER

E-002

2/5/2016 4:07:55 PM

Order Plans

FOR BID ONLY

FOR BID ONLY