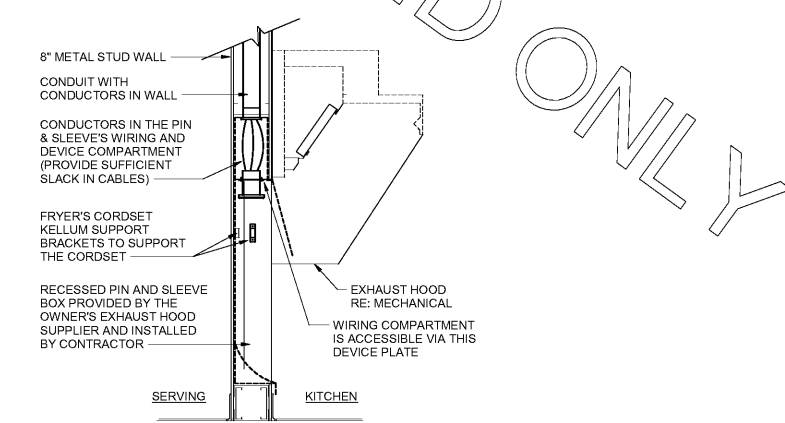
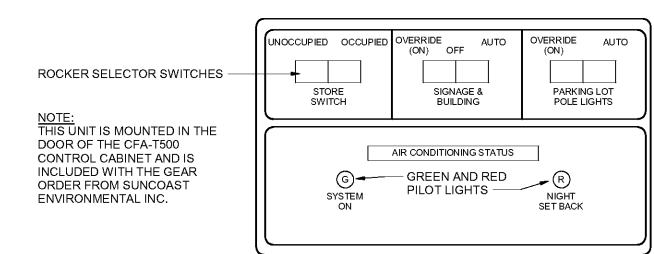


**E3 HME UNIT POWER AND DATA BOX**  
NO SCALE

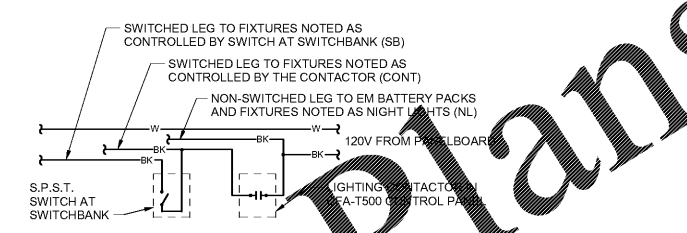


**C4 PIN AND SLEEVE DETAIL**  
NO SCALE

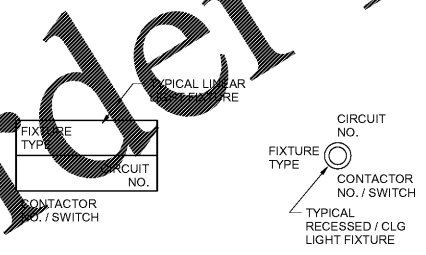


**C2 CFA-T500 CONTROL PANEL DIAGRAM**  
NO SCALE

**B3 STORE OPEN-CLOSED STORE SWITCH CONTROL UNIT**  
NO SCALE



**B4 LIGHTING CONTROL DIAGRAM**  
NO SCALE



**A4 LIGHT FIXTURE NOMENCLATURE DETAIL**  
NO SCALE

**SIGNAGE NOTE**  
THE ELECTRICAL SUBCONTRACTOR SHALL INCLUDE THE ELECTRICAL ROUGH-IN AND FINAL CONNECTIONS OF ALL SIGNAGE (BUILDING MOUNTED AND GROUND MOUNTED ON THE SITE) IN HIS SCOPE OF WORK AND UNDER HIS LOCAL CODE PERMITTING PROCESS. PROVIDE A COPY OF THE PERMIT (WHICH SPECIFICALLY INCLUDES THE SIGNAGE) TO THE SIGN VENDOR IN ORDER TO EXPEDITE THE SIGN VENDOR'S PERMIT PROCESS.

CIR	CONTACTOR	DESCRIPTION
CIR C-1	CONTACTOR-1	KITCHEN LTG
CIR C-3	CONTACTOR-1	KITCHEN LTG
CIR C-5	CONTACTOR-1	RESTROOM LTG
CIR C-11	CONTACTOR-1	DINING LTG
CIR C-7	CONTACTOR-2	DINING LTG
CIR C-9	CONTACTOR-2	PLAY & SERV AREA LTG
CIR C-15	CONTACTOR-2	WATER RECIRC PUMP
CIR C-51	CONTACTOR-2	MLOP ORDERING
CIR C-43	CONTACTOR-3	BLDG. SIGNAGE
CIR C-45	CONTACTOR-3	BLDG. SIGNAGE
CIR C-47	CONTACTOR-3	BLDG. SIGNAGE
CIR C-49	CONTACTOR-3	BLDG. SIGNAGE
CIR C-19	CONTACTOR-4	DIRECTIONAL SIGNS
CIR C-37	CONTACTOR-4	MAIN ID SIGN
CIR C-39	CONTACTOR-4	MAIN ID SIGN
CIR C-41	CONTACTOR-4	MAIN ID SIGN
SPARE	CONTACTOR-5	SPARE
CIR C-31	CONTACTOR-5	BLDG LIGHTING
SPARE	CONTACTOR-5	SPARE
SPARE	CONTACTOR-5	SPARE
SPARE	CONTACTOR-6	SPARE
SPARE	CONTACTOR-6	SPARE
SPARE	CONTACTOR-6	SPARE
CIR C-21	CONTACTOR-7	PARKING LOT LTG
CIR C-23	CONTACTOR-7	PARKING LOT LTG
CIR C-25	CONTACTOR-7	PARKING LOT LTG
CIR C-27	CONTACTOR-7	PARKING LOT LTG
SPARE	CONTACTOR-8	SPARE
SPARE	CONTACTOR-8	SPARE
SPARE	CONTACTOR-8	SPARE
CIR C-29	CONTACTOR-9	SECURITY/FLAG LTG
SPARE	CONTACTOR-9	SPARE
SPARE	CONTACTOR-9	SPARE
SPARE	CONTACTOR-9	SPARE
CIR A-35	CONTACTOR-10	EXHAUST FAN EF-1
CIR A-36	CONTACTOR-10	EXHAUST FAN EF-2
CIR A-40	CONTACTOR-10	EXHAUST FAN EF-3
SPARE	CONTACTOR-10	SPARE
CIR C-54	CONTACTOR-11	CAPTURE JET (J) FAN
SPARE	CONTACTOR-11	SPARE
SPARE	CONTACTOR-11	SPARE
SPARE	CONTACTOR-11	SPARE

NOTE: LOCATIONS WITH TWO MAIN ID SIGNS WILL USE THIS CONTACTOR FOR THE SECOND SIGN.

NOTES:  
1) VERIFY WITH SUNCOAST ENVIRONMENTAL CONTROL GROUP DRAWINGS  
2) ONLY THE #10' CONDUCTOR OF EACH CIRCUIT SHALL BE RUN THRU THE CONTROL PANEL  
3) ANY TAPS OR WIRING CONNECTIONS OTHER THAN TO THE TERMINALS SHALL BE DONE IN A BOX OUTSIDE OF THIS CABINET  
4) VERIFY WITH SUNCOAST ENVIRONMENTAL CONTROL GROUP IF CONTACTORS #10 AND #11 WILL BE ON THE SAME WHEEL WHEN THE SYSTEM IS INITIATED.

**C1 ELECTRICAL LEGEND**

SYMBOL	DESCRIPTION	MTG HT AFF CL	SYMBOL	DESCRIPTION	MTG HT AFF TO CL
LIGHTING FIXTURES			MISCELLANEOUS SYMBOLS		
☐	SURFACE MOUNTED LIGHTING FIXTURE		⊕	GROUND	
☐	RECESSED LED TROFFER LIGHTING FIXTURE		Ⓜ	MOTOR	
☐	SURFACE MOUNTED LED LIGHTING FIXTURE		Ⓜ	EXHAUST FAN MOTOR	
○	RECESSED LED LIGHTING FIXTURE		Ⓜ	JUNCTION BOX	
Ⓜ	WALL MOUNTED LIGHTING FIXTURE. SEE LIGHTING FIXTURE SCHEDULE.	AS NOTED	Ⓜ	CONDUIT AND WIRE MARK NUMBER. REFER TO CONDUCTORS AND CONDUIT SCHEDULE FOR SIZE	
Ⓜ	WALL MOUNTED EXIT SIGN. SHADE INDICATES FACES. PROVIDE CHEVRON DIRECTIONALS WHEN NEEDED	6\"/>			
Ⓜ	CEILING MTD EXIT SIGN. SHADING INDICATES FACES. PROVIDE W/ CHEVRON DIRECTIONALS WHEN NEEDED	6\"/>			
Ⓜ	COMBO EXIT WITH TWO LAMPHEADS	AS NOTED	Ⓜ	SMOKE DETECTORS REMOTE STATUS INDICATOR W/ 1/2\"/>	
Ⓜ	WALL MTD EMERGENCY BATTERY PACK LIGHTING FIXTURE	AS NOTED	Ⓜ	PUSHBUTTON	
Ⓜ	CEILING MTD EMERGENCY BATTERY PACK LIGHTING FIXTURE	AS NOTED	Ⓜ	BELL. TYPE AS NOTED ON PLANS	
Ⓜ	FLUORESCENT STRIP LIGHTING FIXTURE		Ⓜ	PHOTO-ELECTRIC CELL	
Ⓜ	WALL WASHER TYPE RECESSED DOWNLIGHT. AIM LIGHT TOWARD WALL		Ⓜ	TRANSFORMER / DRIVER	
Ⓜ	RECESSED LIGHTING FIXTURE W/ EMERGENCY BATTERY PACK		Ⓜ	LOCKABLE SINGLE POLE SWITCH	
Ⓜ	PENDANT LIGHTING FIXTURE	AS NOTED	Ⓜ	ABOVE FINISH FLOOR	
Ⓜ	LIGHTING TRACK WITH TRACK HEADS	AS NOTED	Ⓜ	ABOVE FINISHED GRADE	
WIRING DEVICES			Ⓜ	AFG	
Ⓜ	120 VOLT DUPLEX RECEPTACLE, 20 AMPS U.O.N.	14\"/>			
Ⓜ	120 VOLT DUPLEX AT SPECIAL MTD HEIGHT, 20 AMPS U.O.N.	14\"/>			
Ⓜ	120 VOLT QUADRAPLEX RECEPTACLE, 20 AMPS U.O.N.	14\"/>			
Ⓜ	120 VOLT QUAD. AT SPECIAL MTD HEIGHT, 20 AMPS U.O.N.	14\"/>			
Ⓜ	120 VOLT SIMPLEX RECEPTACLE, 20 AMPS U.O.N.	14\"/>			
Ⓜ	SINGLE SPECIAL PURPOSE RECEPTACLE, 20 AMPS, USE AS NOTED. NEMA CONFIGURATION AS REQUIRED BY EQUIPMENT	14\"/>			
Ⓜ	RECEPTACLE MOUNTED ON DROP CORNER WITH 20 AMP. UON. OVERCURRENT FLUSH WITH DOWNLIGHT	14\"/>			
S	SINGLE POLE TOGGLE SWITCH	48\"/>			
S2	DOUBLE POLE TOGGLE SWITCH	48\"/>			
S3	THREE WAY TOGGLE SWITCH	48\"/>			
SM	MOTOR MOTOR STARTER SWITCH (W/ NEMA 3R)	48\"/>			
Sp	SWITCH WITH PILOT LIGHT (ON SWITCH IS ON)	48\"/>			
SK	KEY OPERATED SWITCH	48\"/>			
NOTE: RECEPTACLES ON A DEFERRED CIRCUIT (THAT IS, NO OTHER LOAD CONNECTED TO THE DEFERRED CIRCUIT) SHALL HAVE AMPACITY RATING NOT LESS THAN THE AMPACITY OF THE CIRCUIT BREAKER SERVING THE DEVICE.					
CONDUIT/RACEWAYS			TELEPHONE		
Ⓜ	CONDUIT CONCEALED ABOVE CEILING OR IN WALL		Ⓜ	TELEPHONE OUTLET	18\"/>
Ⓜ	CIRCUIT HOMERUN TO PANELBOARD W/ MIN 2#12, 1#12G, 3/4\"/>				
Ⓜ	CONDUIT TURNING UP		Ⓜ	TELEPHONE OUTLET AT SPECIAL MOUNTING HEIGHT	60\"/>
Ⓜ	CONDUIT TURNING DOWN		NOTE: EACH TELEPHONE OUTLET FLOOR OR WALL MOUNTED SHALL BE PROVIDED WITH A 3/4\"/>		
Ⓜ	CONDUIT CONCEALED IN OR BELOW SLAB (OUTSIDE = UNDERGROUND)		CCTV / SECURITY SYSTEM		
Ⓜ	FLEXIBLE LIGHT FIXTURE WHIP; SIX FOOT MAXIMUM LENGTH		Ⓜ	SECURITY ALARM KEYPAD	
Ⓜ	METAL CLAD CABLE ASSEMBLY - ONLY WHERE INDICATED ON DWGS OR SPECS		Ⓜ	SECURITY SYSTEM KEY NOTE	
DISTRIBUTION EQUIPMENT					
Ⓜ	NON-FUSIBLE SAFETY SWITCH, SIZE AND TYPE AS NOTED ON PLANS (AMP/POLES/ENCLOSURE) OR ON SCHEDULE. NEMA 1 ENCLOSURE UNLESS NOTED W/ FOR NEMA 3R	6\"/>			
Ⓜ	FUSIBLE SAFETY SWITCH, SIZE AND TYPE AS NOTED ON PLANS (AMP/POLES/FUSE AMPS/ENCLOSURE) OR ON SCHEDULE. NEMA 1 ENCLOSURE UNLESS NOTED W/ FOR NEMA 3R	6\"/>			
Ⓜ	FLUSH MOUNTED LIGHTING PANELBOARD	6\"/>			
Ⓜ	SURFACE MOUNTED LIGHTING PANELBOARD	6\"/>			
Ⓜ	TRANSFORMER, PROVIDE SECONDARY GROUNDING PER NEC	6\"/>			
Ⓜ	ENCLOSED CIRCUIT BREAKER, SIZE & TYPE AS NOTED (AMP/POLES/ENCLOSURE) NEMA 1 ENCLOSURE IF NOT NOTED. W/ NEMA 3R	6\"/>			
* 6\"/>					

**A1 LIGHTING FIXTURE (LUMINAIRE) SCHEDULE - CHICK-FIL-A P12 EDITION**

NOTE: NOT ALL FIXTURE TYPES ARE USED IN ALL OF THE PROJECTS.

MARK	MANUFACTURER	CATALOG NUMBER	NO. LAMPS/TYPE	WATTS	VOLTS	FUNCTION	REMARKS
A	LITHONIA	267L-472-A125V-EZ-LP840	INTEGRAL WITH FIXTURE	71	120	RECESSED	4\"/>
AE	LITHONIA	267L-472-A125V-EZ-LP840EL14L	INTEGRAL WITH FIXTURE	71	120	RECESSED	SAME AS 'A' WITH EMERGENCY BATTERY PACK. SEE PLAN NOTES ABOUT LAMP SWITCHING
B1	LUMATEX	C51-244-DW-650-JWH	INTEGRAL WITH FIXTURE	35	120	SURFACE	MOUNT LIGHTS TO THE SIDE OF THE HEAD WIRE SHELVING WITH CORD & PLUG
D3	LITHONIA	LDN6-302D-L06AR-120	INTEGRAL WITH FIXTURE	22.6	120	RECESSED	NEO COMPACT WITH CLEAR LENS AND TRIM RATED 2000 LUMENS, 3000K COLOR TEMP
D3E	LITHONIA	LDN6-302D-L06AR-120EL	INTEGRAL WITH FIXTURE	22.6	120	RECESSED	SAME AS D3 EXCEPT WITH EMERGENCY BATTERY PACK/INTEGRAL TEST SWITCH
D4	LITHONIA	LDN6-302D-L06AR-120	INTEGRAL WITH FIXTURE	22.6	120	RECESSED	SAME AS D3 EXCEPT WITH WALLWASH REFLECTOR TRIM
F	MEYDA	30894 (14638)	1-SAT3928	12	120	CEILING	EGG LIGHT FURNISHED WITH A 12 WATT A19-5\"/>
G1	LITHONIA	G-232AL-4VOLT-GE810S-WGCU	2(GE)F28T8XL/SP/PS/ECO	50	120	WALL	STRIP FLUORESCENT WITH LOW TEMP BALLAST AND WIRE GUARD, MTD ABOVE DOOR FRAME
J	LITHONIA	GA-1324VOLT-GB810S	1(GE)F28T8XL/SP/PS/ECO	25	120	WALL	MOUNT ABOVE DOOR FRAME
L	LITHONIA	VSL-2324VOLT-GL-GE810S	2(GE)F28T8XL/SP/PS/ECO	50	120	SURFACE	LOW PROFILE DAMP LOCATION FLUORESCENT
MS	LEVITON	P5110-10W	N/A	4	120	WALL	MOTION SENSOR ON FLUSH BACKBOX. PROVIDE COVER PLATE W/ CENTER TRIGGERED KNOCKOUT
N	MINKA	451-2676	1-LED1A19R27D	11	120	WALL	LAVATORY WALL SCONCE SHADE POINTED DOWN WHILE LAMP IS ON LAVATORY
P1	MEYDA	14276	2-LED1A19R27D	22	120	PENDANT	3\"/>
P2	MEYDA	14277	1-LED1A19R27D	11	120	PENDANT	2\"/>
Q	TROY	KF1856-1AL	-	-	-	PENDANT	COCA-COLA BOTTLE PENDANT, 8\"/>
U	BESALIGHTING	BES028-060	FURNISHED	7.5	120	PENDANT	RED FRIT GLASS, BRONZE CABLE & 8\"/>
V	VISUAL COMFORT	S12028Z	1-BULLED1A19R27D	11	120	WALL	BOSTON LIBRARY LIGHT, MOUNT BACKBOX AT 7-2\"/>
XA	LITHONIA	LH0M-9W-1R-120	INTEGRAL WITH FIXTURE	4	120	WALL	EXIT SIGN WITH BATTERY PACK AND TWO INTEGRAL ADJUSTABLE LAMPHEADS
XC	LITHONIA	APN-8M-EXT (TWO LAMP UNIT)	INTEGRAL WITH FIXTURE	21	120	WALL	EXTERIOR WALL MOUNTED EMERGENCY LIGHTING UNIT. LOCATE NEAR EGRESS DOOR
XD	DUAL-LITE	GL25	NONE	250	120	WALL	INVERTER UNIT FOR EXTERIOR EGRESS LTG. ON AT DUSK, OFF AT DAWN, ON DURING PWR OUTAGE
QA	PROGRESS LIGHTING	P6075-31 WITH P6769 TOP COVER LENS	2(GE)LED1P50R830Z6	24	120	WALL	8\"/>
QC	LITHONIA	TRF-403M-TA-TB-SCWA-SLR1	1-PMH403M-027498	46	120	GROUND	FLOODLIGHT MTD ON GROUND ON 2\"/>
QD	LITHONIA	D5X0-LED-40C-100-40K-SERIES	FURNISHED	138	120	POLE	COORDINATE WITH THE SPECIFIC SITE CONDITIONS FOR DISTRIBUTION TYPE(S) AND POLE STYLE, POLE THICKNESS, AND HEIGHT. REFER TO THE ELECTRICAL SITE PLAN FOR FURTHER INFORMATION.
* QD REFER TO SHEET E32.1 (PHOTOMETRIC PLAN) FOR THE SITE SPECIFIC LIGHTING FIXTURE USED IN LIEU OF TYPE QD WHEN REQUIRED.							
QH	LITHONIA	L3LED-T24WPA-TRMW-30K-60CR1	FURNISHED	11.2	120	RECESSED	4\"/>
QJ	SECURITY LTG	RWSC-72-3K-4D-U-08	FURNISHED	25	120	WALL	UPDOWN LED EXTERIOR WALL SCONCE. SEE ELEVATIONS FOR MOUNTING HEIGHT
OK	HUBBELL	LNC-SL3K-S1	FURNISHED	129	120	WALL	LED WALLPACK W/ CENTERLINE OF FIXTURE AT 8\"/>

NOTES:  
1. LUMINAIRES UTILIZING DOUBLE ENDED LAMPS AND CONTAIN BALLASTS THAT CAN BE SERVICED IN PLACE SHALL HAVE A DISCONNECTING MEANS EITHER INTERNAL OR EXTERNAL TO EACH LUMINAIRE PER NEC 410.130(C).  
2. THE LIGHTING FIXTURE PACKAGE IS AVAILABLE THROUGH A NATIONAL ACCOUNT PROGRAM REFER TO THE ELECTRICAL SPECIFICATIONS SHEET, SECTION C16002 FOR VENDOR INFORMATION.  
3. THE ASTERISK (\*) BEHIND THE FIXTURE MARK IN THE ABOVE SCHEDULE INDICATES THE FIXTURE IS A NON-TYPICAL LIGHT FIXTURE PER THE CFA NATIONAL P12 PROTOTYPE.

**Chick-fil-A**  
5200 Buffington Road  
Atlanta, Georgia 30349-2998

**INTERPLAN**  
ARCHITECTURE  
ENGINEERING  
INTERIOR DESIGN  
PROJECT MANAGEMENT

604 COURTLAND STREET SUITE 100  
ORLANDO, FLORIDA 32804  
PH 407.645.5008  
FX 407.629.9124

SEAL: THIS DOCUMENT IS NOT FOR CONSTRUCTION UNLESS THE ARCHITECT OR ENGINEER SIGNATURE AND SEAL APPEAR BELOW

**CHICK-FIL-A**  
P12\_LC\_LE\_LS\_SE  
SAR South Cobb Drive FSR  
3100 South Cobb Dr SE, Smyrna, GA 30080

**FSR# 00810**

REVISION SCHEDULE  
NO. DATE DESCRIPTION

CONSULTANT PROJECT # 2017.0165  
PRINTED FOR BID  
DATE September 06, 2017  
DRAWN BY MI

INFORMATION CONTAINED ON THIS DRAWING AND ALL SCHEDULES IS THE PROPERTY OF INTERPLAN. IT IS TO BE USED ONLY FOR THE PROJECT AND SITE SPECIFICALLY IDENTIFIED. ANY REUSE OF THIS INFORMATION FOR ANY OTHER PROJECT WITHOUT THE WRITTEN PERMISSION OF INTERPLAN IS STRICTLY PROHIBITED.

SHEET ELECTRICAL SCHEDULES AND DETAILS  
E-001

**Order Plans @**

2/5/2018 6:27:53 PM