



Chick-fil-A
5200 Buffington Road
Atlanta, Georgia 30349-2998

INTERPLAN
ARCHITECTURE
ENGINEERING
INTERIOR DESIGN
PROJECT MANAGEMENT

604 COURTLAND STREET
SUITE 100
ORLANDO, FLORIDA 32804
PH 407.645.5008
FX 407.629.9124

SEAL:
THIS DOCUMENT IS NOT FOR CONSTRUCTION
UNLESS THE ARCHITECT OR ENGINEER'S
SIGNATURE AND SEAL APPEAR BELOW.

CHICK-FIL-A
SAR South Cobb Drive FSR
3100 South Cobb DR SE, Smyrna, GA 30080

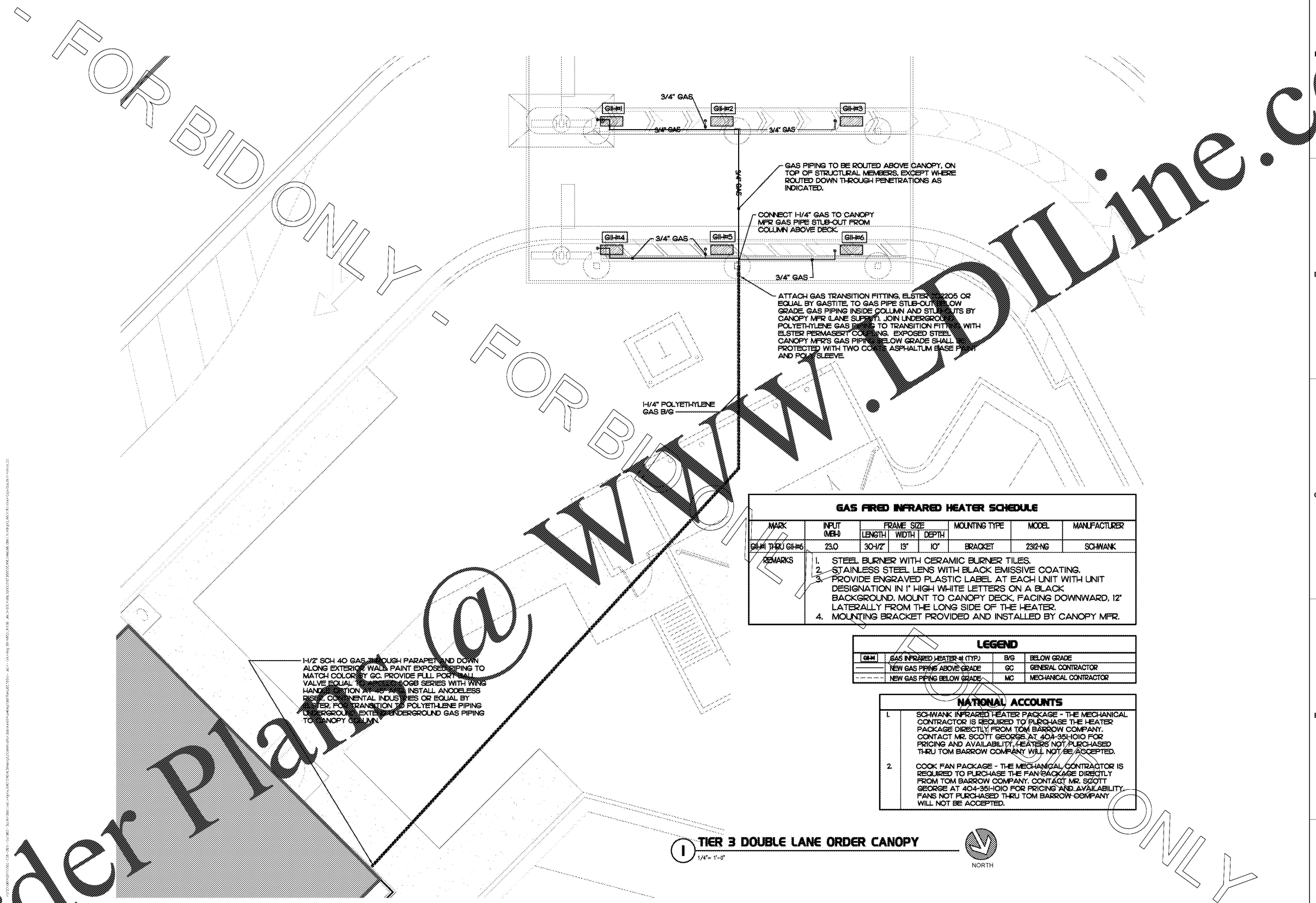
FSR# 00810

REVISION SCHEDULE		
NO.	DATE	DESCRIPTION

CONSULTANT PROJECT #	2017.0165
PRINTED FOR	BID
DATE	September 06, 2017
DRAWN BY	DG

Information contained on this drawing and in all rights there included for which no other project may be included in any manner without written or verbal consent from authorized project representative.
SHEET: FACE TO FACE CANOPY & SITE PLAN
SHEET NUMBER

P-260



MARK	INPUT (MBH)	FRAME SIZE			MOUNTING TYPE	MODEL	MANUFACTURER
		LENGTH	WIDTH	DEPTH			
G/H-#1 THRU G/H-#6	23.0	30-1/2"	13"	10"	BRACKET	2312-NG	SCHWANK
REMARKS	<ol style="list-style-type: none"> STEEL BURNER WITH CERAMIC BURNER TILES. STAINLESS STEEL LENS WITH BLACK EMISSIVE COATING. PROVIDE ENGRAVED PLASTIC LABEL AT EACH UNIT WITH UNIT DESIGNATION IN 1" HIGH WHITE LETTERS ON A BLACK BACKGROUND. MOUNT TO CANOPY DECK, FACING DOWNWARD, 12" LATERALLY FROM THE LONG SIDE OF THE HEATER. MOUNTING BRACKET PROVIDED AND INSTALLED BY CANOPY MFR. 						

SYMBOL	DESCRIPTION	BY	LOCATION
G/H-#	GAS INFRARED HEATER-# (TYP.)	B/G	BELOW GRADE
---	NEW GAS PIPING ABOVE GRADE	GC	GENERAL CONTRACTOR
---	NEW GAS PIPING BELOW GRADE	MC	MECHANICAL CONTRACTOR

NATIONAL ACCOUNTS

- SCHWANK INFRARED HEATER PACKAGE - THE MECHANICAL CONTRACTOR IS REQUIRED TO PURCHASE THE HEATER PACKAGE DIRECTLY FROM TOM BARROW COMPANY. CONTACT MR. SCOTT GEORGE AT 404-351-1010 FOR PRICING AND AVAILABILITY. HEATERS NOT PURCHASED THRU TOM BARROW COMPANY WILL NOT BE ACCEPTED.
- COOK FAN PACKAGE - THE MECHANICAL CONTRACTOR IS REQUIRED TO PURCHASE THE FAN PACKAGE DIRECTLY FROM TOM BARROW COMPANY. CONTACT MR. SCOTT GEORGE AT 404-351-1010 FOR PRICING AND AVAILABILITY. FANS NOT PURCHASED THRU TOM BARROW COMPANY WILL NOT BE ACCEPTED.

1/2" SCH 40 GAS THROUGH PARAPET AND DOWN ALONG EXTERIOR WALL. PAINT EXPOSED PIPING TO MATCH COLOR BY GC. PROVIDE FULL PORT BALL VALVE EQUAL TO 1/2" SCH 40 SERIES WITH WING HANDLE. INSTALL ANODELESS COPPER OR ALUMINUM INDUSTRY OR EQUAL BY MFR. FOR TRANSITION TO POLYETHYLENE PIPING UNDERGROUND EXTERIOR UNDERGROUND GAS PIPING TO CANOPY COLUMN.

1 TIER 3 DOUBLE LANE ORDER CANOPY
1/4" = 1'-0"



FOR BID ONLY -
Order Plans @ WWW.WALDLINE.COM

2/5/2018 8:42 PM