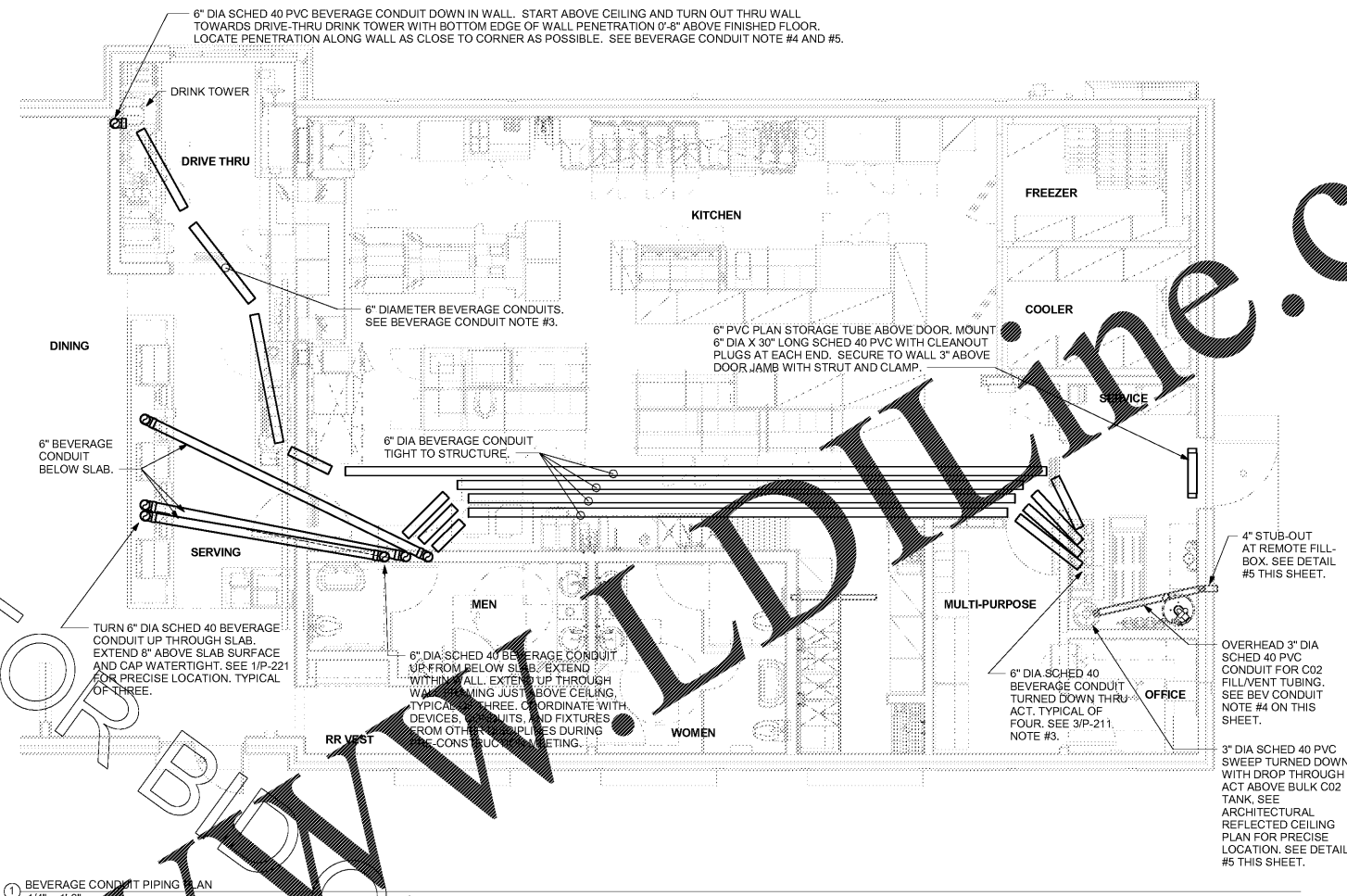
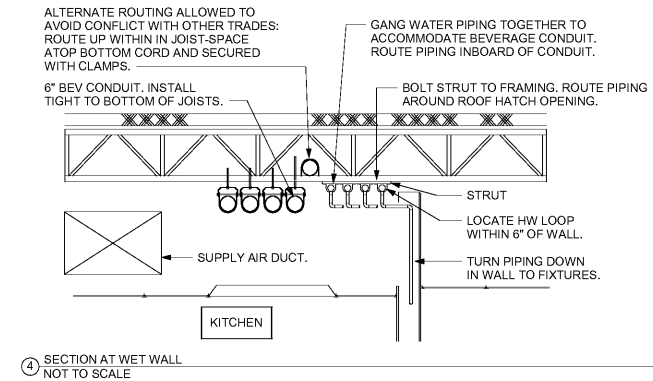
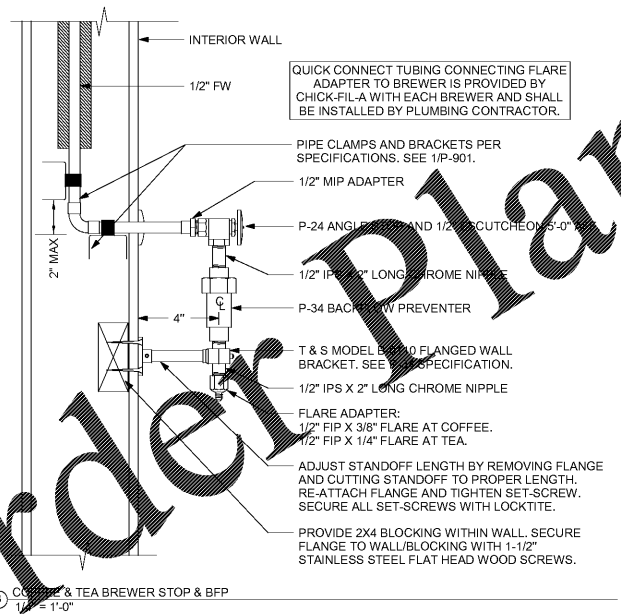


**2. BEVERAGE CONDUIT NOTES**

- ROUTE BEVERAGE SYSTEM PIPING OVERHEAD FROM THE BEVERAGE RACK TO DRINK TOWERS IN FOUR (4)-6" DIA SCH 40 PVC DWV CONDUITS. ALL CONDUIT SHALL BE HELD TIGHT TO STRUCTURE AND SUPPORTED WITH THREADED ROD AND CLEVIS HANGERS AT INTERVALS SHOWN IN SPECIFICATIONS FOR HORIZONTAL OVERHEAD PIPING. COORDINATE ROUTING WITH THE GENERAL CONTRACTOR TO AVOID MECHANICAL AND ELECTRICAL SYSTEMS. SEE 1/P-101 AND 1/P-221 FOR BELOW-SLAB BEVERAGE CONDUIT.
- COORDINATE ROUTING OF ALL CONDUITS WITH HVAC DUCT IN KITCHEN. SEE SHEET M-201 FOR LOCATION OF AC UNITS AND DUCT ROUTING.
- TURN THE 6" DIA CONDUIT DOWN THROUGH THE CEILING AT THE BEVERAGE RACK AND PROVIDE CHROMED ESCUTCHEONS AT CEILING PENETRATIONS. TERMINATE OPPOSITE END ABOVE CEILING WHERE SHOWN ON PLANS.
- AT 6" DIA CONDUIT DROP IN DRIVE-THRU, PROVIDE 1/8TH BEND FITTING WITH SHORT PIPE STUB AT BASE OF DROP. CUT STUB AND FITTING FLUSH WITH FINISHED WALL.
- FOR BEVERAGE CONDUIT DROPS AT WALLS WITH SHEATHING EXTENDED ABOVE THE CEILING, PROVIDE APPROPRIATE FITTING AT UPPER END OF CONDUIT DROP TO EXTEND CONDUIT THROUGH SHEATHING.



1 BEVERAGE CONDUIT PIPING PLAN  
1/4" = 1'-0"



5 CO2 FILL VENT CONDUIT AND FILL BOX  
1/4" = 1'-0"



Chick-fil-A  
5200 Buffington Road  
Atlanta, Georgia 30349-2998

**INTERPLAN**  
ARCHITECTURE  
ENGINEERING  
INTERIOR DESIGN  
PROJECT MANAGEMENT

604 COURTLAND STREET  
SUITE 100  
ORLANDO, FLORIDA 32804  
PH 407.645.5008  
FX 407.629.9124

SEAL:  
THIS DOCUMENT IS NOT FOR CONSTRUCTION  
UNLESS THE ARCHITECT OR ENGINEER'S  
SIGNATURE AND SEAL APPEAR BELOW.

**CHICK-FIL-A**  
SAR South Cobb Drive FSR  
3100 South Cobb DR SE, Smyrna, GA 30080

**FSR# 00810**

REVISION	SCHEDULE	DESCRIPTION
NO.	DATE	

CONSULTANT PROJECT #	2017.0165
PRINTED FOR	BID
DATE	September 06, 2017
DRAWN BY	DG

SHEET  
BEVERAGE CONDUIT  
PLAN

SHEET NUMBER  
**P-211**

Order Plans @ WWW.LDLINE.COM

2/5/2018 8:30 PM

COPYRIGHT © 2017 INTERPLAN, LLC. REPRODUCING OR OTHERWISE TRANSMITTING THIS DOCUMENT IN ANY FORM OR BY ANY MEANS WITHOUT THE WRITTEN PERMISSION OF INTERPLAN, LLC IS PROHIBITED.