

PROVIDE A PROFESSIONALLY LAMINATED COPY OF THESE DETAILS TO BE INSTALLED INSIDE THE ROOFTOP UNIT CONTROL CABINET. USE A SETON CHART FRAME STYLE #6824. TELEPHONE NUMBER 800-245-8624. FOR MOUNTING THE DETAIL, ATTACH THE FRAME TO THE INTERIOR OF THE UNIT IN PLAIN AND EASY VIEW OF THE CONTROLS SECTION. CONTACT ENGINEER OF RECORD FOR A REPRODUCIBLE COPY OF THE DETAIL.



Chick-fil-A
5200 Buffington Road
Atlanta, Georgia 30349-2998

INTERPLAN
ARCHITECTURE
ENGINEERING
INTERIOR DESIGN
PROJECT MANAGEMENT

604 COURTLAND STREET
SUITE 100
ORLANDO, FLORIDA 32804
PH 407.645.5008
FX 407.629.9124

SEAL:
THIS DOCUMENT IS NOT FOR CONSTRUCTION
UNLESS THE ARCHITECT'S ENGINEER
SIGNATURE AND SEAL APPEAR BELOW.

CHICK-FIL-A
SAR South Cobb Drive FSR
3100 South Cobb Dr SE, Smyrna, GA 30080

FSR# 00810

NO.	DATE	DESCRIPTION

NO.	DATE	DESCRIPTION

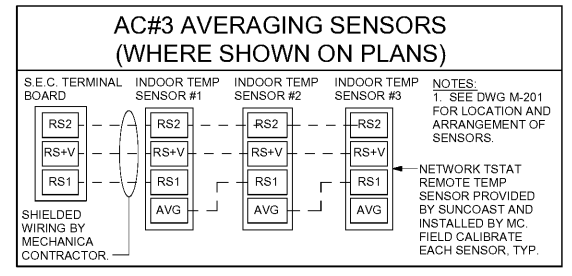
NO.	DATE	DESCRIPTION

NO.	DATE	DESCRIPTION

NO.	DATE	DESCRIPTION

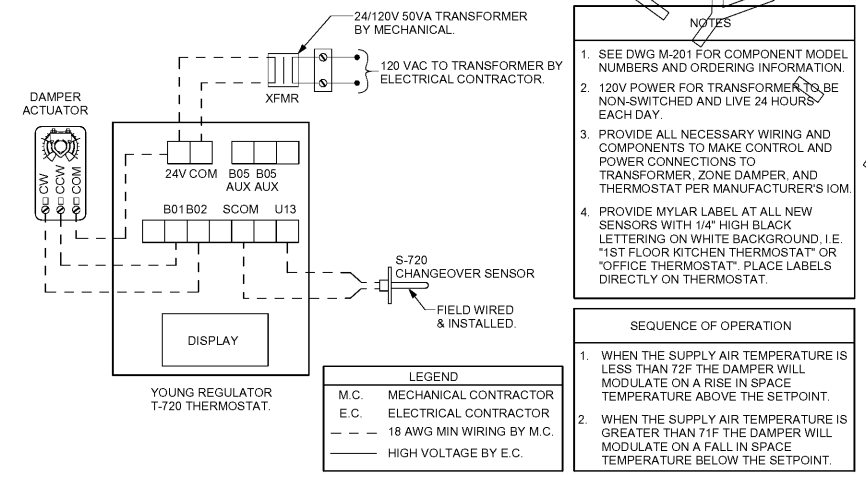
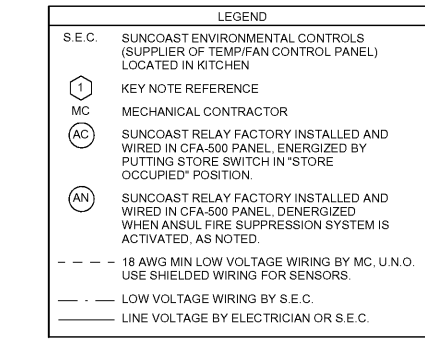
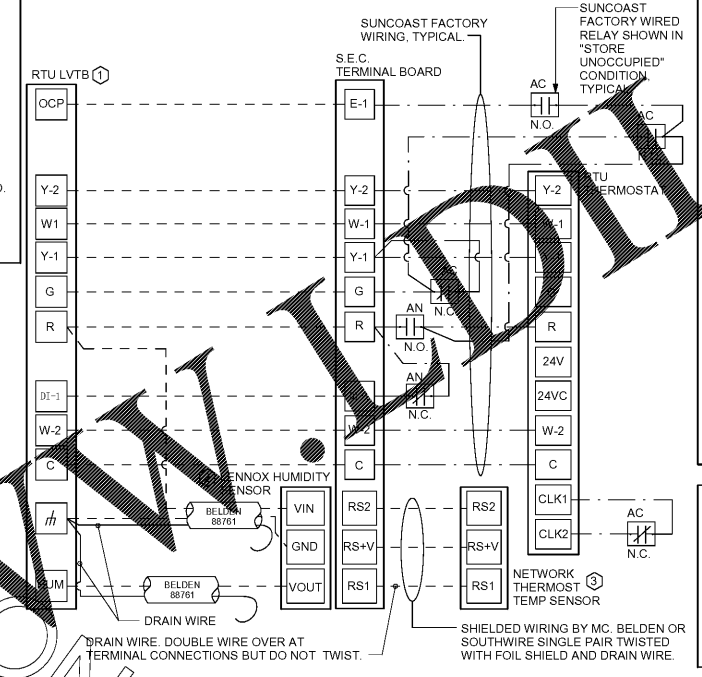
NO.	DATE	DESCRIPTION

Permit
SHEET
HVAC CONTROLS
M-501

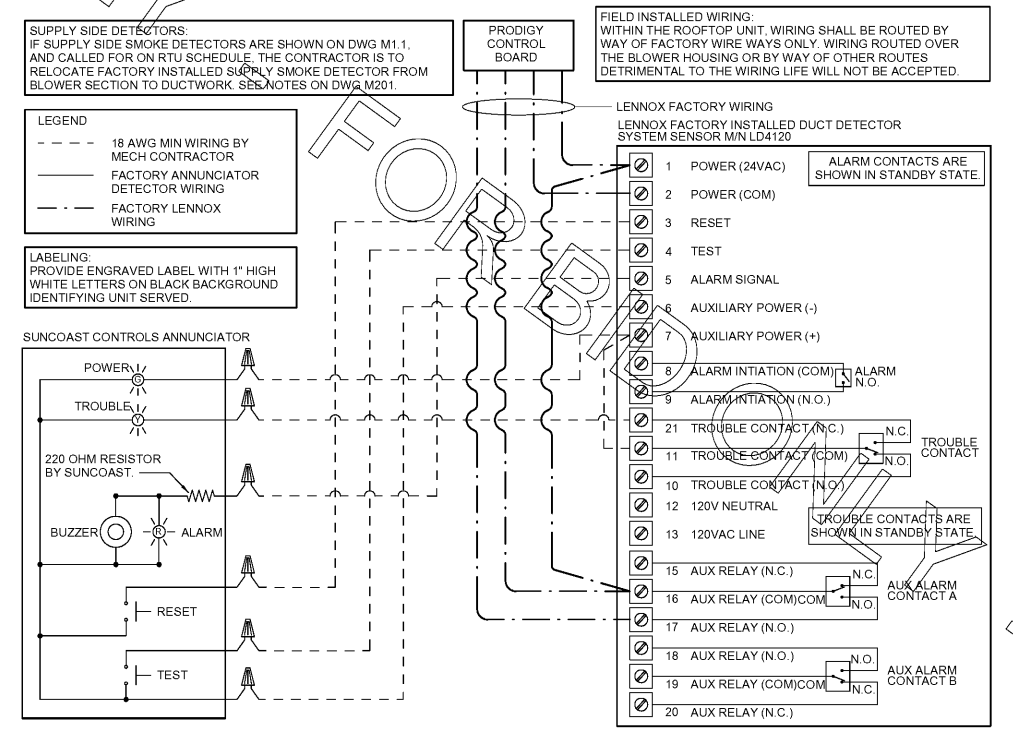


- NOTES:**
- FOR ALL RTU'S EXCEPT AT AC#1, CHANGE PRODIGY-M3 BOARD CONTROL PARAMETER #65 TO ZERO (#58 ON LCH UNITS). THIS WILL CAUSE THE O.A. DAMPER TO OPEN ON "OCCUPIED" STATE. AT AC#1 (LGH TYPE) LEAVE THE SETTING AT THE DEFAULT VALUE SO THE O.A. DAMPER WILL REMAIN CLOSED FOR THE FIRST 60 MINUTES AFTER "OCCUPIED" STATE IS CHANGED. (LGH TYPE) CHANGE THE VALUE TO 150 SO THE O.A. DAMPER WILL REMAIN CLOSED FOR THE FIRST 150 MINUTES AFTER "OCCUPIED" STATE IS CHANGED.
 - MECHANICAL CONTRACTOR SHALL MAKE PLASTIC LAMINATE OF THIS DETAIL AND INSTALL PERMANENTLY ON THE DOOR OF ROOFTOP UNIT CONTROL COMPARTMENT.
 - SEE DETAIL ON THIS SHEET FOR SMOKE DETECTOR AND ANNUNCIATOR WIRING.
 - FOR HUMIDITROL RTU'S, SET PRODIGY-M3 BOARD CONTROL PARAMETER #105 FOR DEHUMIDIFICATION OPERATION TO A VALUE OF 5 (60% RH).
 - SET ALL THERMOSTATS FOR AUTO CHANGEOVER.
 - SET TSTAT COM SWITCH ON PRODIGY BOARD TO OPEN POSITION.
 - AT MSAV UNITS, SET THE MSAV LOW SPEED SETTING TO THE SAME VALUE AS THE HIGH SPEED SETTING AFTER TAB IS COMPLETE.
 - PROVIDE PLASTIC ENGRAVED LABEL AT ALL NEW SENSORS WITH 1/4" HIGH WHITE LETTERING ON BLACK BACKGROUND, I.E. "AC#2 HUMIDITY SENSOR" OR "AC#2 TEMP SENSOR". PLACE LABELS ON WALL ADJACENT TO DEVICE. DO NOT APPLY DIRECTLY TO DEVICE.

- KEYED NOTES:**
- LOW VOLTAGE WIRING TO RTU TO BE ROUTED TO UNIT THRU FACTORY WIREWAY.
 - HUMIDITROL UNITS ONLY: WIRING TO HUMIDITY SENSOR TO BE MADE WITH TWO SEPARATE RUNS OF SHIELDED TWISTED PAIR. TERMINATE SHIELD WIRES AT TB-1. LEAVE OPEN AT SENSOR.
 - NETWORK TSTAT REMOTE TEMP SENSOR PROVIDED BY SUNCOAST AND INSTALLED BY MC. FIELD CALIBRATE EACH SENSOR.

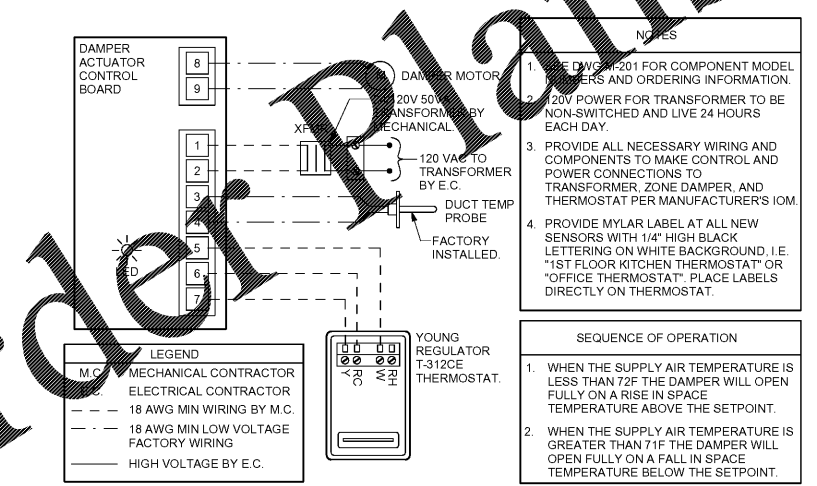


2 ROOFTOP UNIT CONTROL WIRING - LENNOX
NOT TO SCALE



4 SMOKE DETECTOR AND ANNUNCIATOR WIRING DIAGRAM
NOT TO SCALE

1 VAV DAMPER AND TSTAT - PLAY AREA
NOT TO SCALE



3 VAV DAMPER AND TSTAT - MGRS OFFICE
NOT TO SCALE

Order Plans @

2/5/2016 8:27:16 PM

FOR BID ONLY