



Chick-fil-A
5200 Buffington Road
Atlanta, Georgia 30349-2998

INTERPLAN

ARCHITECTURE
ENGINEERING
INTERIOR DESIGN
PROJECT MANAGEMENT
604 COURTLAND STREET
SUITE 100
ORLANDO, FLORIDA 32804
PH 407.545.5028
FX 407.629.9124



BRITT PETERS
ASSOCIATES
ARCHITECTS
999 WATERSIDE DRIVE
SUITE 2022
NORFOLK, VA 23510
PH 757.965.5710
BPAA 170944

SEAL
THIS DOCUMENT IS NOT FOR CONSTRUCTION
SIGNATURE AND SEAL APPEAR BELOW



10/27/17

CHICK-FIL-A
SAR South Cobb Drive FSR
3100 South Cobb Dr SE, Smyrna, GA 30080

FSR# 00810

REVISION SCHEDULE

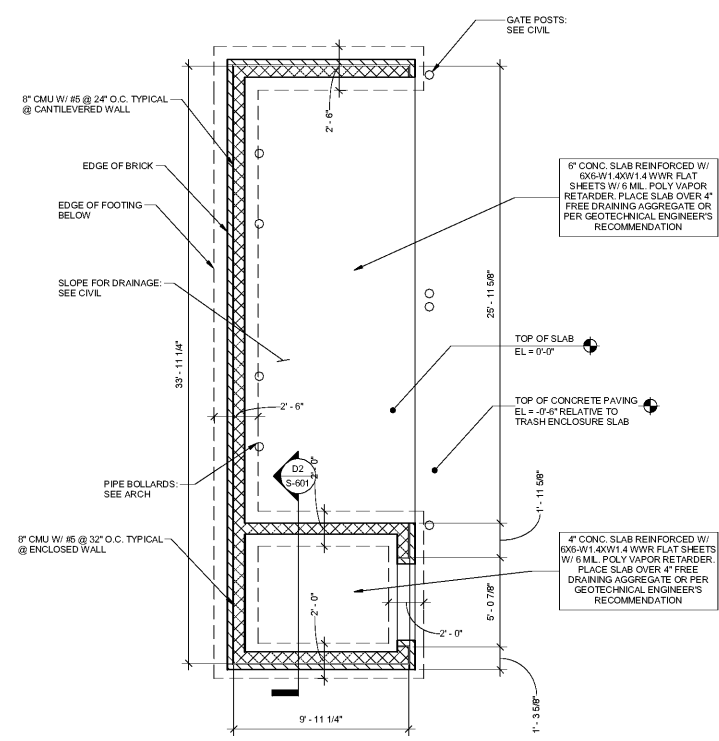
NO.	DATE	DESCRIPTION
-----	------	-------------

CONSULTANT PROJECT # 170944

PRINTED FOR	Permit
DATE	September 21, 2017
DRAWN BY	JNJ
DESIGNED BY	WBU

Information contained on this drawing and in all digital files...
SHEET # REFUSE ENCLOSURE PLANS & DETAILS
SHEET NUMBER

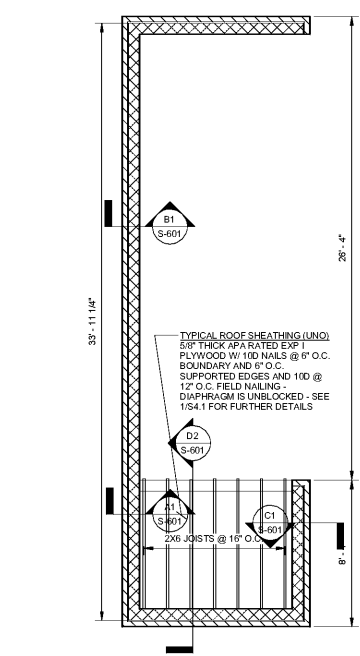
S-601



D4 FOUNDATION PLAN
1/4" = 1'-0"

1. BOTTOM OF EXTERIOR FTG = 2'-0" BELOW FINISH GRADE ELEV UNO
2. SEE ARCH DWG FOR ANY WALL LOCATIONS AND OR DIMENSIONS NOT SHOWN
3. SEE DETAIL 1/5.3.1 FOR SLAB CONTROL JOINTS
4. WHERE FOOTING STEPS ARE NECESSARY, THEY SHALL BE NO STEEPER THAN 1 VERTICAL TO 2 HORIZONTAL, UNLESS SHOWN OTHERWISE ON PLANS
5. ALL SAW CUT CONTROL JOINTS SHALL BE COMPLETED WITHIN 12 HOURS AFTER FINISHING SLAB WITHOUT DISLOGGING AGGREGATE
6. ALL ANCHORS, CLIPS, STRAPS & ETC WHICH ARE IN CONTACT WITH COPPER BASED TREATED WOOD, SUCH AS ACO, CBA OR SBX, AND ARE LESS THAN 3/8" THICK, SHALL BE SIMPSON 2MAX (G185), STAINLESS STEEL OR AN ENGINEERED APPROVED EQUAL
7. ALL FASTENERS WHICH ARE IN CONTACT WITH COPPER BASED TREATED WOOD, SUCH AS ACO, CBA OR SBX, AND ARE LESS THAN 3/8" DIAMETER SHALL BE G185 (A HEAVY COATED GALVANIZED) STAINLESS OR AN ENGINEERED APPROVED EQUAL
8. FOUNDATION DESIGN IS BASED ON THE FOLLOWING ASSUMPTIONS: A GEOTECHNICAL ENGINEER SHALL BE EMPLOYED PRIOR TO THE START OF CONSTRUCTION TO INVESTIGATE SUBSURFACE CONDITIONS. IF THE GEOTECHNICAL REPORT INDICATES THAT THESE ASSUMPTIONS LISTED BELOW ARE INCORRECT PLEASE NOTIFY ENGINEER IMMEDIATELY.
9. INDIVIDUAL FOOTINGS ARE DESIGNED TO BEAR ON UNIFORM SOIL CAPABLE OF SUPPORTING 3000 PSF. CONTINUOUS FOOTINGS ARE DESIGNED TO BEAR ON SOIL CAPABLE OF SUPPORTING 3000 PSF. DESIGN ASSUMES DIFFERENTIAL AND TOTAL SETTLEMENT ARE MINIMUM OF 1/8" PSF SOIL PASSIBLE PRESSURE
10. THE SOIL BEARING CAPACITY AND CONSISTENCY SHALL BE VERIFIED FOR THE BUILDING LIMITS BY A REGISTERED GEOTECHNICAL ENGINEER WHEN FOUNDATION EXCAVATIONS HAVE BEEN CARRIED DOWN TO THE PROPOSED ELEVATIONS, THE BOTTOM OF ALL EXTERIOR FOOTINGS SHALL BE 1/4" MINIMUM BELOW FINISHED GRADE
11. WHERE FOOTING EXCAVATIONS ARE TO REMAIN OPEN ON MAY BE EXPOSED TO RAINFALL, THE EXCAVATIONS SHALL BE UNDERROUT AND 4 INCH THICK MUD MAT OF 2000 PSI CONCRETE SHALL BE PLACED IN THE BOTTOM TO PROTECT THE BEARING SOLS PER GEOTECHNICAL ENGINEERS RECOMMENDATIONS
12. SEE 1/5.3.1 FOR FOOTING WIDTH ALL FOOTINGS ARE 12" DEEP & REINFORCED WITH (2) #5 TOP AND BOTTOM CONTINUOUS.

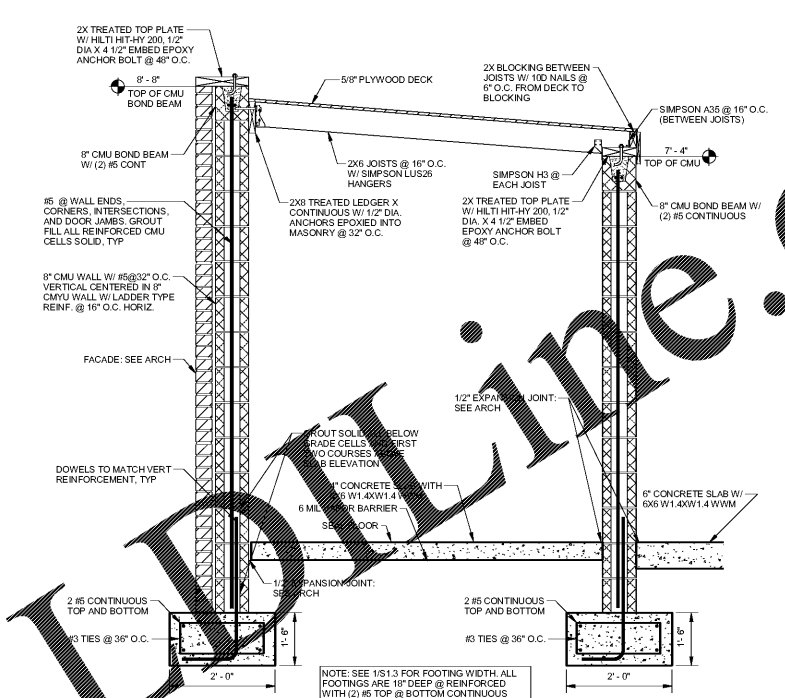
C4 FOUNDATION NOTES
1" = 1'-0"



D3 ROOF FRAMING PLAN
1/4" = 1'-0"

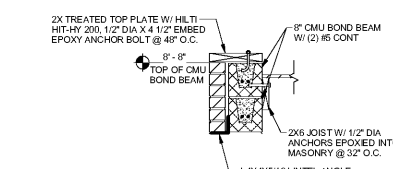
1. SEE DETAIL 1/5.4.1 FOR ROOF NAILING REQUIREMENTS. SEE SCHEDULE ON S6.1 FOR ADDITIONAL NAILING REQUIREMENTS
2. ALL ANCHORS, CLIPS, STRAPS & ETC WHICH ARE IN CONTACT WITH COPPER BASED TREATED WOOD, SUCH AS ACO, CBA OR SBX, AND ARE LESS THAN 3/8" THICK, SHALL BE SIMPSON 2MAX (G185) STAINLESS STEEL OR AN ENGINEERED APPROVED EQUAL
3. ALL FASTENERS WHICH ARE IN CONTACT WITH COPPER BASED TREATED WOOD, SUCH AS ACO, CBA OR SBX, AND ARE LESS THAN 3/8" DIAMETER, SHALL BE G185 (A HEAVY COATED GALVANIZED) STAINLESS STEEL OR AN ENGINEERED APPROVED EQUAL

C3 FRAMING NOTES
1" = 1'-0"

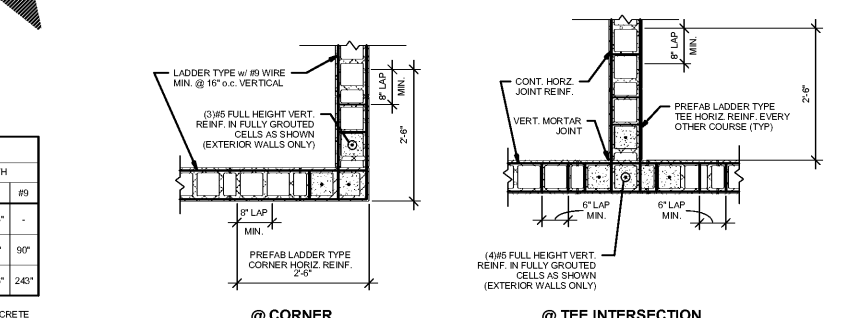


D2 REFUSE ENCLOSURE SECTION
3/4" = 1'-0"

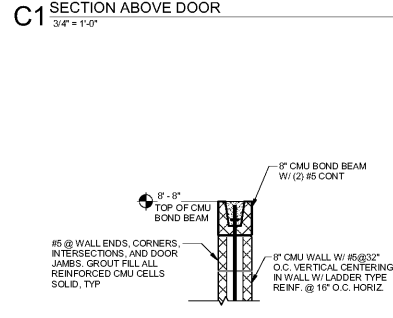
- NOTE: SEE 1/5.3 FOR FOOTING WIDTH ALL FOOTINGS ARE 12" DEEP @ REINFORCED WITH (2) #5 TOP @ BOTTOM CONTINUOUS



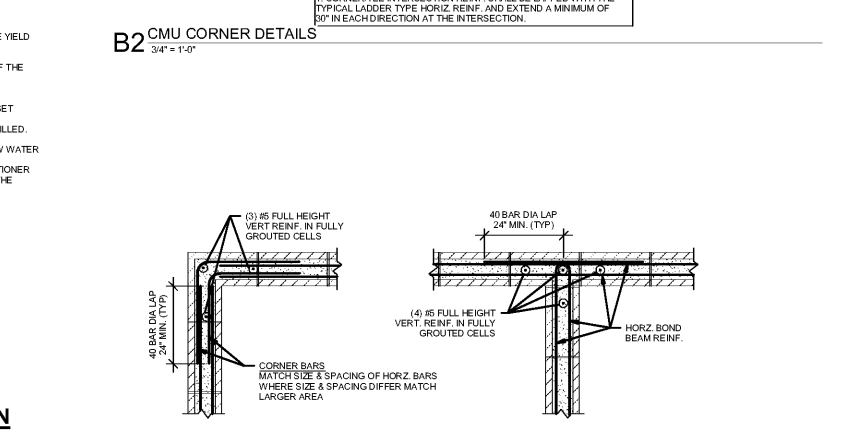
C1 SECTION ABOVE DOOR
3/4" = 1'-0"



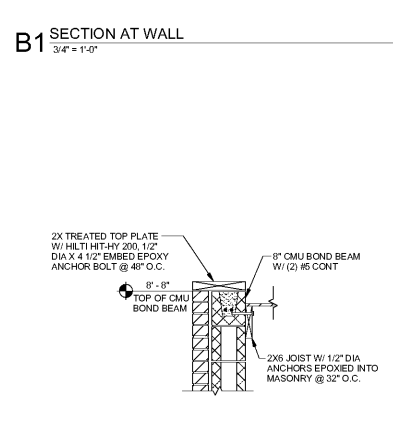
B2 CMU CORNER DETAILS
3/4" = 1'-0"



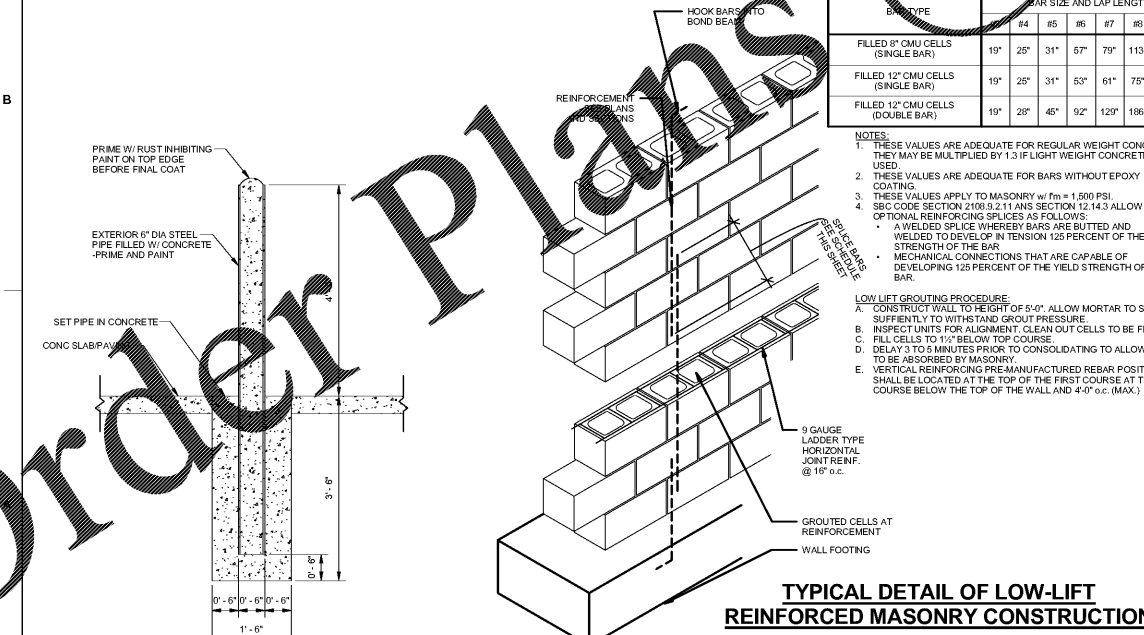
B1 SECTION AT WALL
3/4" = 1'-0"



A2 MASONRY BOND BEAM CORNER DETAILS
3/4" = 1'-0"



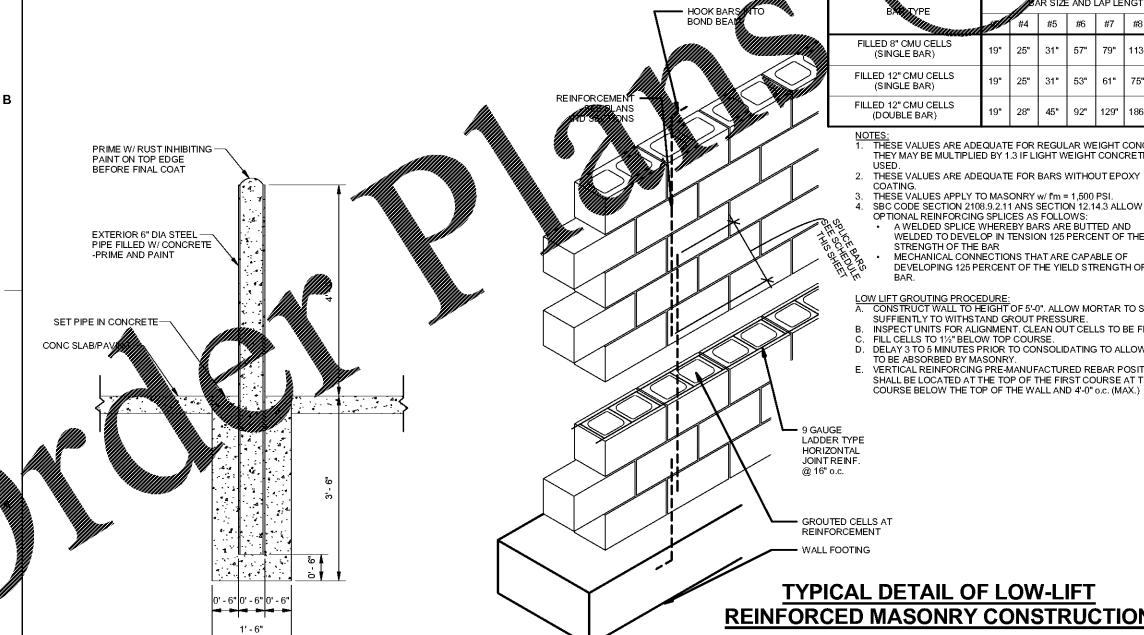
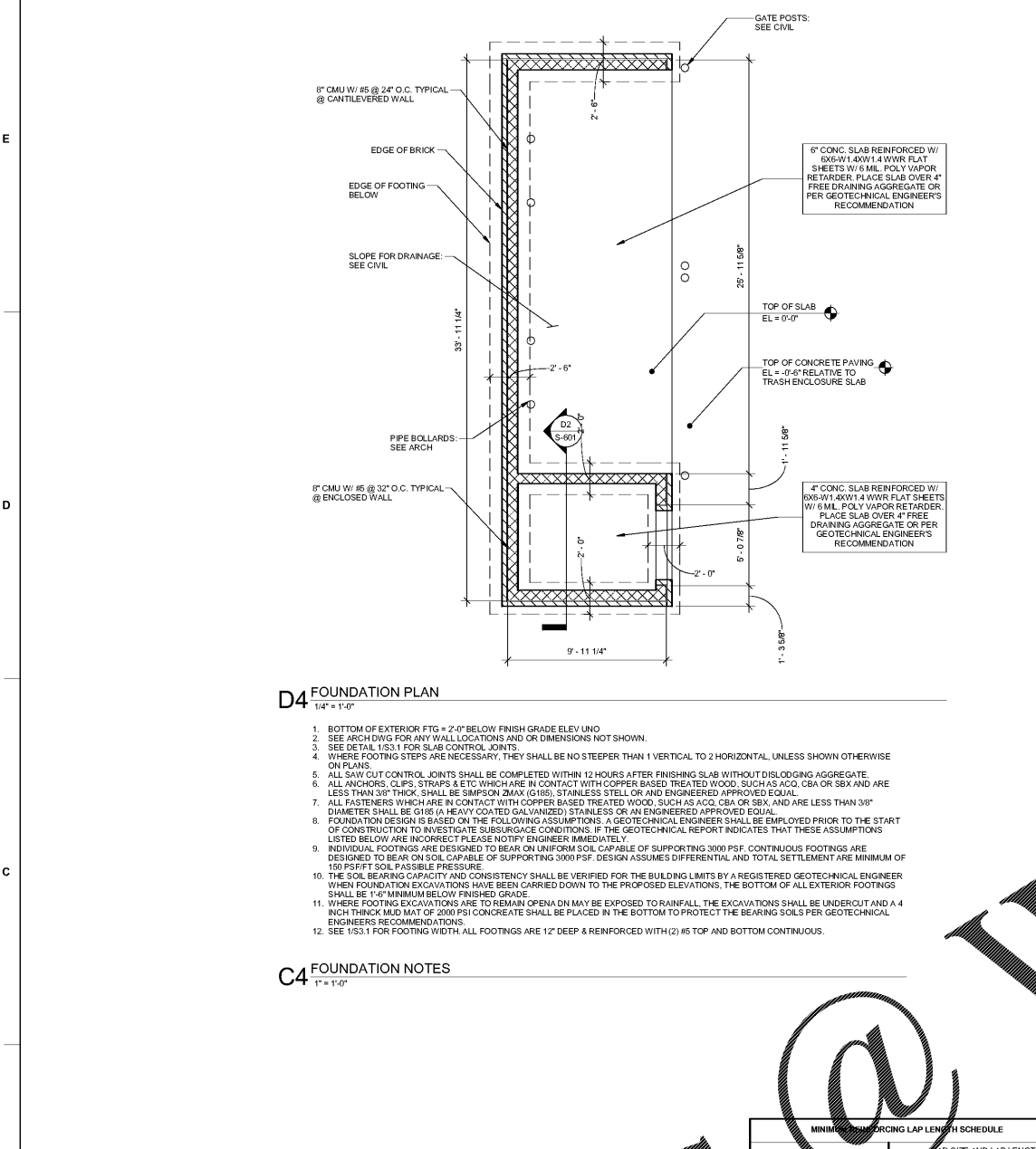
A1 SECTION AT ROOF
3/4" = 1'-0"



A4 BOLLARD DETAIL
3/4" = 1'-0"

A3 LOW-LIFT CMU WALL DETAIL
3/4" = 1'-0"

TYPICAL DETAIL OF LOW-LIFT REINFORCED MASONRY CONSTRUCTION



A4 BOLLARD DETAIL
3/4" = 1'-0"

A3 LOW-LIFT CMU WALL DETAIL
3/4" = 1'-0"

TYPICAL DETAIL OF LOW-LIFT REINFORCED MASONRY CONSTRUCTION

Order Plans

9/28/2017 8:57:56 PM