



Chick-fil-A
 5200 Buffington Road
 Atlanta, Georgia 30349-2998

INTERPLAN
 ARCHITECTURE
 ENGINEERING
 INTERIOR DESIGN
 PROJECT MANAGEMENT
 604 GOURLAND STREET
 SUITE 100
 ORLANDO, FLORIDA 32804
 PH 407.646.5008
 FX 407.629.9124

**BRITT, PETERS
 ASSOCIATES**
 ARCHITECTURE
 999 WATERSIDE DRIVE
 SUITE 2002
 NORFOLK, VA 23510
 PH 757.965.5710
 BPA# 170944

SEAL
 THIS DOCUMENT IS NOT FOR CONSTRUCTION
 UNLESS THE ARCHITECT'S SIGNATURE AND SEAL APPEAR BELOW



CHICK-FIL-A
SAR South Cobb Drive FSR
 3100 South Cobb Dr SE, Smyrna, GA 30080

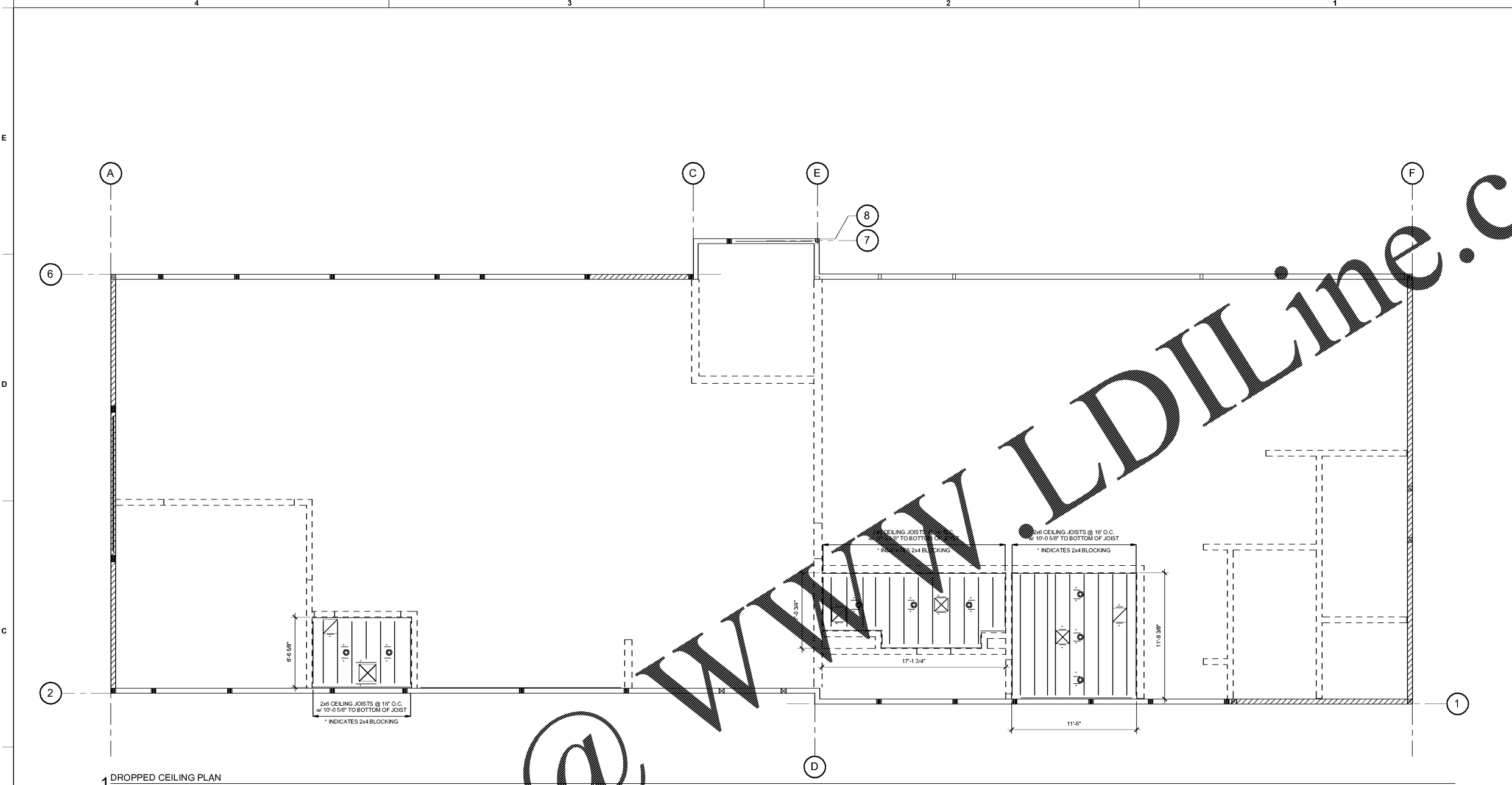
FSR# 00810

REVISION SCHEDULE		
NO.	DATE	DESCRIPTION

CONSULTANT PROJECT # **170944**
 PRINTED FOR Permit
 DATE September 21, 2017
 DRAWN BY **JNJ**
 DESIGNED BY **WBU**

Information contained on this drawing and in all rights there included for which no part may be reproduced in any manner without written or verbal consent from authorized project representative.
 SHEET
DROPPED CEILING PLAN

SHEET NUMBER
S-241L



Order Plans @ www.LDILine.com

9/29/2017 2:04:13 PM

COPYRIGHT © 2017 INTERPLAN. REPEATS COPYRIGHT & OTHER RIGHTS RESPECTING THESE DOCUMENTS TO THE ORIGINAL OR ANY PART THEREOF. REPRODUCTIONS, CHANGES OR ADJUSTMENTS ARE PROHIBITED.