

DIVISION 05 - METALS

SECTION - C05000. STRUCTURAL AND MISCELLANEOUS STEEL
Refer to Structural Drawings

SECTION - C05050 BASIC METAL MATERIALS AND METHODS
PART I - GENERAL
Refer to Structural Steel drawings

2.1 PART II - PRODUCTS
STRUCTURAL-STEEL MATERIALS
A. Recycled Content of Steel Products: Show preference to products with an average recycled content of steel products of post-consumer recycled content plus one-half of pre-consumer recycled content is not less than 50 percent. Under the condition that there is not a significant increase in price between the products.

B. PART III - EXECUTION
Refer to Structural Steel drawings

END OF SECTION C05050

SECTION - C05120. STRUCTURAL STEEL
Refer to Structural Drawings

SECTION - C05400. COLD FORMED METAL FRAMING
Refer to Structural Drawings

SECTION - C05514. ALUMINUM LADDERS
PART I - GENERAL

1.1 SECTION INCLUDES
A. Aluminum access ladders.

1.2 RELATED SECTIONS
A. Roof Hatches: SECTION C07720

1.3 REFERENCES
A. AA - Aluminum Association.
B. ASTM B 209 - Standard Specification for Aluminum and Aluminum-Alloy Sheet and Plate.
C. ASTM B 221 - Standard Specification for Aluminum and Aluminum-Alloy Extruded Bars, Rods, Wire, Profiles, and Tubes.
D. OSHA 1910.27 - Fixed Ladders.

1.4 QUALITY ASSURANCE
A. Product Qualification: Product design shall comply with OSHA 1910.27 minimum standards for ladders.

1.5 WARRANTY
A. Manufacturer has responsibility for an extended Corrective Period for work of this Section for a period of 5 years from date of Substantial Completion against all the conditions indicated below, and when notified in writing from Owner, manufacturer shall promptly and without inconvenience and cost to Owner correct said deficiencies. Defects in materials and workmanship

PART II - PRODUCTS

2.1 MANUFACTURERS
A. Acceptable Manufacturer:
1. O'Keeffe's, Inc., San Francisco, CA 94124
a. 26% recycled content - pre/post not specified.
2. Alaco Ladder Company, Chino, CA 91710
a. 40-85% post-industrial scrap and 5-15% post-consumer scrap.

2.2 APPLICATIONS/SCOPE
A. Fixed Ladder Design
B. Fixed Ladder Bottom Bracket
C. Bottom floor supported bracket
D. Bottom wall supported bracket
E. Bracket as drawn

2.3 FINISHES
A. Extruded Mill Finish

2.4 FABRICATION
A. Rungs: Not less than 1-1/4 inches (32 mm) in section and 18-3/8 inches (467mm) long, formed from tubular aluminum extrusions. Squared and deeply serrated on all sides. Rungs shall withstand a 1500 pound (454 kg) load without deformation or failure.
B. Channel Side Rails: Not less than 1/8 inch (3 mm) wall thickness by 3 inches (76 mm) wide.
C. Heavy Duty Tubular Side Rails: Assembled from two interlocking aluminum extrusions no less than 1/8 inch (3 mm) wall thickness by 3 inches (76 mm) wide. Construction shall be self-locking stainless steel fasteners, full penetration TIG welds and clean, smooth and burr-free surfaces.

PART III - EXECUTION

3.1 EXAMINATION
A. Coordinate anchorages. Furnish setting drawings, templates, and anchorage structural loads for fastener resistance.

3.2 INSTALLATION
A. Install in accordance with manufacturer's instructions and in proper relationship with adjacent construction.

DIVISION 06 - WOOD AND PLASTICS

SECTION C06000 - CARPENTRY
Refer to Structural Drawings
SECTION C06100 - ROUGH CARPENTRY
Refer to Structural Drawings

SECTION - C06170 WOOD TRUSSES:
Refer to structural drawings.

SECTION - C06200: FINISH CARPENTRY
PART I - GENERAL
SECTION INCLUDES
Interior trim, jams and millwork
Interior architectural wall surfacing.
Plastic Laminated casework
Factory finishing
Hardware, typically furnished by the woodworking manufacturer

RELATED SECTIONS
Rough Carpentry: SECTION C06100
Solid Non-Porous Sheet and Shape Products: SECTION C06410
Millwork, Cabinetry and Countertops: SECTION C12390

REFERENCES
Minimum standards for work within this section shall be in conformity with the MANUAL OF MILLWORK, latest edition, Standards of the Architectural Millwork Industry as adopted by the WOODWORK INSTITUTE.

(SUBMITTALS)
A. Submit Shop Drawings per SUBMITTALS Section to Owner for acceptance prior to fabrication.

1.5 QUALITY ASSURANCE
A. Performance shall be in accordance with Custom GRADE of the WOODWORK INSTITUTE - MANUAL OF MILLWORK, latest edition.
1. If provisions for the Custom grade are in conflict with, or modified by the drawings and/or specifications, the specifications shall govern.

1.6 QUALIFICATIONS
A. Contractors and their personnel engaged in the work shall be able to demonstrate successful experience with work of comparable extent, complexity and quality to that shown and specified.
1. Fabricator shall be a member/licensee in good standing of the WOODWORK INSTITUTE
2. Installer shall be a member/licensee in good standing of the WOODWORKING INSTITUTE

1.7 DELIVERY, STORAGE AND HANDLING
A. Deliver all materials only when the project is ready for installation and the general contractor has provided a clean storage area as defined in the MANUAL OF MILLWORK.

1.8 SEQUENCING AND SCHEDULING
A. Coordinate all fabrication, delivery and installation work with the general contractor and applicable trades.

PART II - PRODUCTS

2.1 MANUFACTURER
A. The drawings were prepared and portions of this specification written on the basis of using the products of a specific manufacturer. It is not the intent to limit competitive bidding. Products with equal characteristics by other manufacturers are acceptable under the conditions of these specifications.

2.2 COMPONENTS
A. Made with binder containing no urea formaldehyde resin.
B. Paneling: Hardwood veneer plywood paneling. Manufacturer's stock hardwood plywood panels complying with HPVA HP-1, made without urea formaldehyde adhesives.
C. Shelving: Do not use particleboard or MDF that contains urea formaldehyde.
D. Moisture Content: Trim lumber; 12% maximum at time of delivery.
E. Grading and Marking:
1. Softwood Lumber: FS MM-L-0075f
2. Hardwood Lumber: FS MM-L-00736a

2.3 MATERIALS
A. General Use:
1. General: Work solid stock to patterns shown. Standard shape materials shall conform to patterns indicated in current grading rules for the species.
2. Interior Wood Trim:
a. General Use (Paint): Contractor's option: "C" Select Grade Sugar Pine, Live Oak, White Pine, Magnolia, Birch, Redwood or Fir.
b. Natural Finish (Stain): Clear, plain sawn, Yellow pine, A1, Grade 1.
3. Interior Finish Plywood: 3/4 inch paint grade, lumber core, Birch plywood.
4. Shelving: 3/4 inch AB Grade Fir Plywood with "C" Select Grade Maple edge trim.
5. Wood Benches/Tables: Clear, plain sawn, Yellow pine, A1, Grade 1, Nails: FF-N-103c and FF-N-105a. Stainless steel for Redwood.
6. Screws: FS FF-S-11 b.
7. Lag Screws and Bolts: FS FF-B-501. Size and grade best suited for purpose used.
8. Toggle Bolts: FS FF-B-588b.
B. Cabinets
1. Doors, Panels, Ends, Etc.: 3/4-inch AB Grade clear White Pine plywood, exposed edges banded.
2. Stiles, Rails, Etc.: 3/4-inch "C" Select Grade, White Pine.
3. Shelving and Dividers: 3/4-inch AB Grade, Group 3, Ponderosa pine; exposed edges banded.
4. Backs: 1/4-inch tempered hardboard.
5. Framing, Blocking, Nailers, Etc.: Pine
6. Hinges: Continuous concealed piano hinges, concealed, complete with guides and template for installation.
7. Filler Strips: Match face materials.
8. Hardware: Hager, Knappe and Vogt, Stanley, to suit functions.
9. Catches: "Hafele" pressure catch No. 245.54.710.
10. Shelf Standards and Brackets: Noted on drawings
11. Locks: Noted on drawings

1.3 SUBMITTALS
A. Submit Shop Drawings per Section - C01300 SUBMITTALS

1.4 REGULATORY REQUIREMENTS
A. Accessibility Requirements: Comply with the U.S. Architectural & Transportation Barriers Compliance Board ADA-ABA Accessibility Guidelines for Buildings and Facilities.

1.5 QUALITY ASSURANCE
A. Fabricator Qualifications: Minimum of three (3) years documented experience in fabricating solid surfacing countertops similar in scope and complexity to this Project. Currently certified by the manufacturer as an acceptable fabricator.
B. Installer Qualifications: Minimum of three (3) years of documented installation experience for projects similar in scope and complexity to this Project, and currently certified by the manufacturer as an acceptable installer.

1.6 DELIVERY, STORAGE AND HANDLING
A. Delivery: Deliver sinks in original containers.
B. Storage and Protection: Store materials protected from exposure to harmful weather conditions, at room temperature and humidity conditions recommended by manufacturer. Store sheet materials flat on pallets or similar rack-type storage to preclude damage.

Office Cabinets and Counters:
1. Doors, Panels, Ends, Etc.: 3/4-inch AB Grade clear White Pine plywood, exposed edges banded.
2. Stiles, Rails, Etc.: 3/4-inch "C" select grade solid clear White Pine.
3. Shelving and Dividers: 3/4-inch AB Grade clear White Pine plywood; exposed edges banded.
4. Backs: 1/4-inch tempered hardboard.
5. Framing, Blocking, Nailers, Etc.: Pine
6. Hinges: Continuous concealed piano hinges, concealed, complete with guides and template for installation.
7. Filler Strips: Match face materials.
8. Hardware: Hager, Knappe and Vogt, Stanley, to suit functions.
9. Catches: "Hafele" pressure catch No. 245.54.710.
10. Shelf Standards and Brackets: Noted on drawings
11. Locks: Noted on drawings

D. Laminated Plastic Assemblies:
1. NEMA standard LD-1, Class 1, high pressure decorative laminates: Color shown on the drawings:
a. Surface Sheet: 0.05 inch thick
b. Backing Sheet: 0.02 inch thick phenolic backing sheet.
c. Edging: 0.028 inch thick.
d. Adhesive: Fire resistant; Acceptable to laminate manufacturer.
e. Backing: 3/4-inch AB Group 1, exterior grade, APA fir plywood.

E. STANDING AND RUNNING TRIM
1. Multipurpose Construction Adhesive: Formulation complying with ASTM D 3498 that is recommended for indicated use by adhesive manufacturer.

2.4 FABRICATION
A. Fabricate in shop of millwork subcontractor and assemble in single and complete units to the greatest extent that requirements of delivery and installation in building will permit.

PART III - EXECUTION

3.1 EXAMINATION
A. Verify the adequacy and proper location of any required backing or support framing.
B. Verify that mechanical, electrical, plumbing and other building items (supplied by others) affecting work in this section are in place and ready.

3.2 INSTALLATION
A. Install all work in conformance with MANUAL OF MILLWORK Custom GRADE.
B. All work shall be secured in place, square, plumb and level.
C. All work abutting other components shall be properly scribed.
D. Mechanical fasteners at exposed and semi-exposed surfaces, excluding installation attachment screws and screws used for attaching cabinets end-to-end, shall be countersunk.
E. Equipment cut-outs within countertops indicated on plans shall be cut by installer.
F. Method of attachment, including the type, size, frequency, and/or spacing of anchoring devices and fasteners shall comply with MANUAL OF MILLWORK minimum requirements or be as indicated in the plans or specifications.
G. All installations including attachment of casework and countertops shall be in compliance with MANUAL OF MILLWORK minimum requirements.

3.3 ADJUSTING
A. Before completion of the installation, the installer shall adjust all moving or operating parts to function smoothly and correctly.

3.5 CLEANING
A. Upon completion of installation, the installer shall clean all items installed of pencil or ink marks. Sweep clean the area of operation, depositing debris in containers provided by the general contractor.

END OF SECTION C06200

SECTION - C06410. SOLID NON-POROUS SHEET AND SHAPE PRODUCTS
PART I - GENERAL
SECTION INCLUDES
A. Solid Surface as provided by manufacturer, see Notes and account schedule on drawings.
1. Solid surface countertop
2. Solid surface sinks
3. Solid surface millwork and window sills
4. Adhesives and sealants

1.2 RELATED SECTIONS
A. Rough Carpentry: SECTION C06110
B. Finish Carpentry: SECTION C06200
C. Millwork and Cabinetry: SECTION C06100
D. Millwork, Cabinetry and Countertops: SECTION C12390
E. Plumbing: SECTION 15

1.3 SUBMITTALS
A. Submit Shop Drawings per Section - C01300 SUBMITTALS
B. Product Data
1. Submit product data for each specified product. Include manufacturer's technical data sheets and published instructions.
2. Submit Material Data Safety Sheets (MSDS) for adhesives and sealants.
C. Quality Assurance Submittals:
1. Test Reports: Submit certified test reports showing compliance with specified performance characteristics and physical properties, if required.
2. Warranty: Specimen copy of specified warranty.
3. Maintenance Data: Submit manufacturer's published maintenance manual with closeout submittals.

1.4 REGULATORY REQUIREMENTS
A. Accessibility Requirements: Comply with the U.S. Architectural & Transportation Barriers Compliance Board ADA-ABA Accessibility Guidelines for Buildings and Facilities.

1.5 QUALITY ASSURANCE
A. Fabricator Qualifications: Minimum of three (3) years documented experience in fabricating solid surfacing countertops similar in scope and complexity to this Project. Currently certified by the manufacturer as an acceptable fabricator.
B. Installer Qualifications: Minimum of three (3) years of documented installation experience for projects similar in scope and complexity to this Project, and currently certified by the manufacturer as an acceptable installer.

1.6 DELIVERY, STORAGE AND HANDLING
A. Delivery: Deliver sinks in original containers.
B. Storage and Protection: Store materials protected from exposure to harmful weather conditions, at room temperature and humidity conditions recommended by manufacturer. Store sheet materials flat on pallets or similar rack-type storage to preclude damage.

PROJECT CONDITIONS
A. Field Measurements: Verify actual measurements and openings by field measurements before fabrication; show recorded measurements on shop drawings. Coordinate field measurements and fabrication schedule with construction progress to avoid construction delays.
B. Adhesive: Acclimate adhesives to occupancy room temperatures with maximum temperature not to exceed 75 degrees F.

1.8 WARRANTY
A. Manufacturer's Limited Warranty: Provide manufacturer's standard ten (10) Year Commercial Limited Warranty against defects in solid surface sheet materials.

PART II - PRODUCTS

2.1 MANUFACTURER
A. Basis of Design: Aristech Surfaces LLC - manufacturer of Avonite.

2.2 MATERIALS
A. Composition: Acrylic resins, fire-retardant mineral fillers, and proprietary coloring agents. Through-the-body color for full thickness of sheet material.
B. Sheet Products (vanity countertops): Manufacturer noted on finish schedule in drawings. 1/2 inch thick sheets, continuous length with bull-nose edge with integral back and side splash, and 3/4 inch exterior grade APA Fir plywood backing.
C. Shaped Products: Integral one-piece bowl; manufacturer's standard; if specified in mechanical portions of these specifications.
D. Patterns and Colors: As noted on finish schedule in drawings.

2.3 FABRICATION
A. Fabricate components in shop, to greatest extent practicable, in size and shapes indicated according to approved shop drawings and manufacturer published fabrication requirements.
B. From joint seams between solid surfacing components with specified seam adhesive. Completed joint inconspicuous in appearance and without voids.
C. Provide holes and cutouts indicated on approved shop drawings. Rout cutouts and complete by sanding all edges smooth.

PART III - EXECUTION

3.1 EXAMINATION
A. Examine substrates and conditions that could adversely affect the work of this section.
B. Substrates must be sound, flat, smooth, and free from dusts or other contaminants.
C. Commencement of work will constitute acceptance of substrates and conditions to receive the work.

3.2 COUNTERTOP INSTALLATION
A. Install solid surfacing components plumb, level and true according to approved shop drawings and manufacturer's published installation instructions. Use wet marking and specialized fabrication tools acceptable to manufacturer.
B. Form joint seams with specified seam adhesive. Sealants in locations shown on approved shop drawings and acceptable to manufacturer.
C. Rout sink cutouts to manufacturer's template. Adhesive solid surface castings units to countertops with specified construction adhesive.
D. Install backslashes and side slashes where indicated on drawings. Adhere to countertops with specified construction adhesive.

3.3 WINDOW SILL INSTALLATION
A. Install window sills for full length of each window, securing to substrates with concealed fasteners and specified adhesive.
B. Provide minimum 1/8-inch expansion on both sides of window sills. Fill gap with specified joint sealant.
C. Completed work to be plumb, level and true, with edges eased and sanded smooth.

3.5 REPAIR
A. Surface marring for solid surface components may be repaired according to manufacturer's published installation instructions.
B. Remove and replace solid surface components that are damaged and cannot be satisfactorily repaired.

3.5 CLEANING AND PROTECTION
A. Clean solid surface components according to manufacturer's published maintenance instructions. Completely remove excess adhesives and sealants from finished surfaces.
B. Protect completed work from damage during remainder of construction period.

END OF SECTION C06410

CHICK-FIL-A
5200 Buffington Road
Atlanta, Georgia 30349-2998

INTERPLAN
ARCHITECTURE
ENGINEERING
INTERIOR DESIGN
PROJECT MANAGEMENT

604 COURTLAND STREET SUITE 100
ORLANDO, FLORIDA 32804
PH 407.645.5008
FX 407.629.9124

SEAL:
I HEREBY CERTIFY THAT THESE CONSTRUCTION DRAWINGS AND SPECIFICATIONS WERE PREPARED, REPRODUCED, CHANGED OR ASSIGNED BY ARCHITECT OR ENGINEER REGISTERED AND SEAL APPLICABLE BELOW.

CHICK-FIL-A
SAR South Cobb Drive FSR
3100 South Cobb DR SE, Smyrna, GA 30080

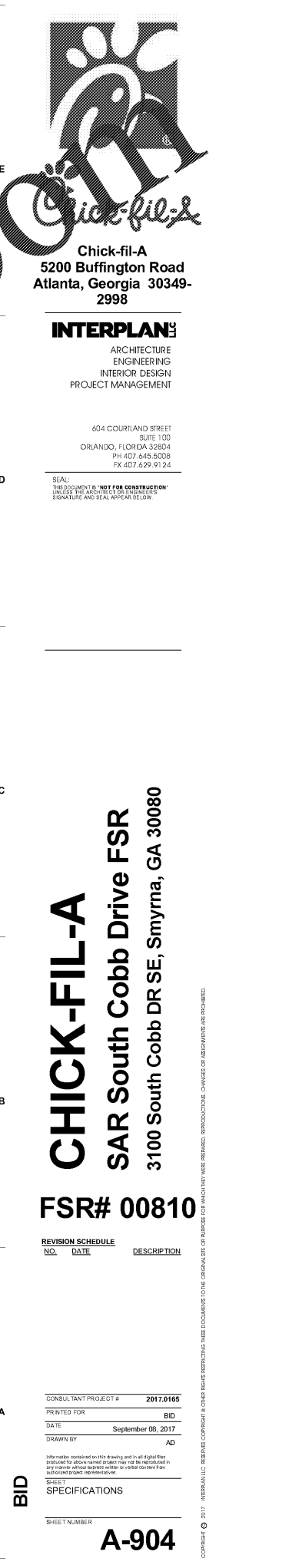
FSR# 00810

REVISION SCHEDULE		
NO.	DATE	DESCRIPTION

CONSULTANT PROJECT # 2017.0165
PRINTED FOR BID
DATE September 06, 2017
DRAWN BY AD

Information contained on this drawing and to all rights therein reserved. No part of this drawing may be reproduced or transmitted in any form or by any means, electronic, mechanical, photocopying, recording, or by any information storage and retrieval system, without the prior written permission of the architect or engineer. SHEET SPECIFICATIONS

SHEET NUMBER A-904



2/5/2018 10:03:03 PM