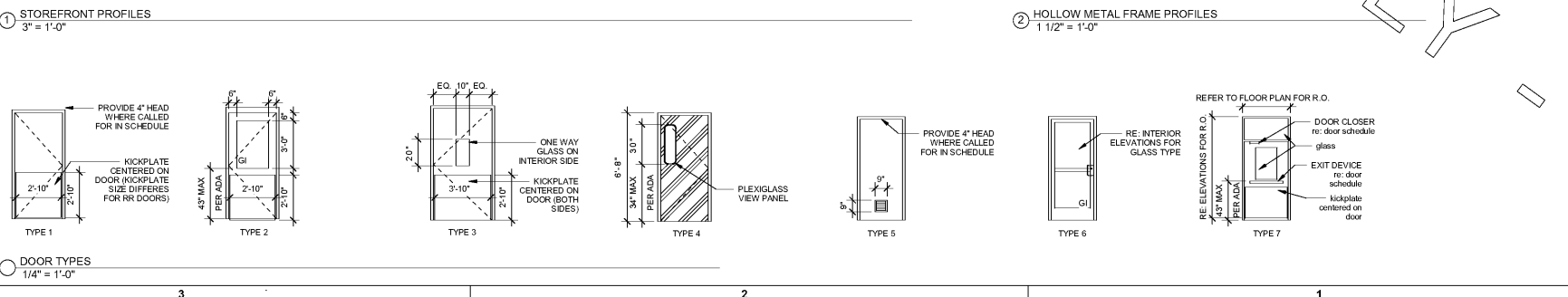
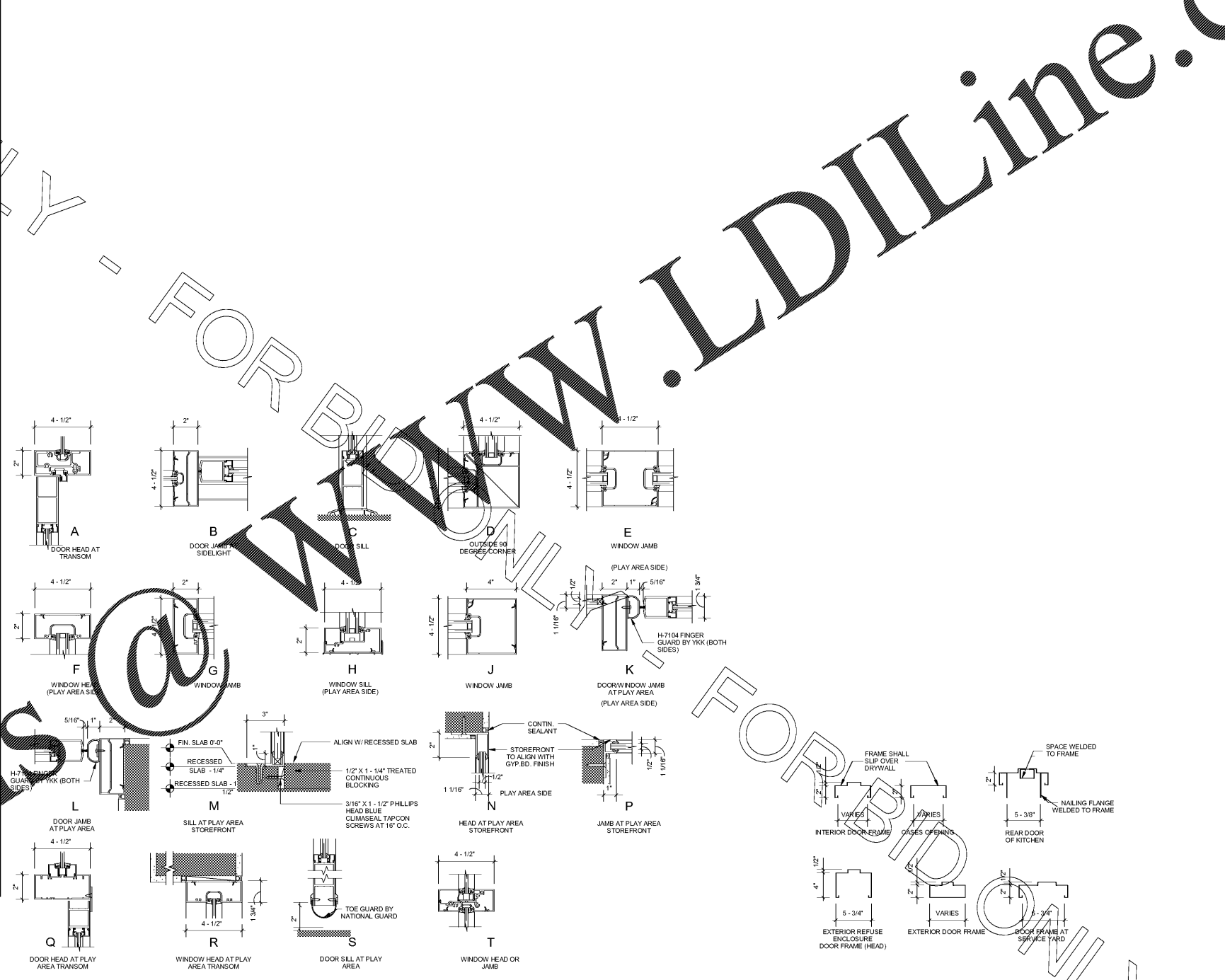


**DOOR HARDWARE SCHEDULE**

SUPPLIER	QTY.	ITEM	MANUFACTURER	YKK MODEL NUMBER	KAWNEER MODEL NUMBER
YKK OR KAWNEER	2	PANIC PULL	YKK	H541	KAWNEER 137703
YKK OR KAWNEER	1 SET	EXIT DEVICE	YKK	P52497	DOMFALCON 1690
YKK OR KAWNEER	1	RIM CYLINDER	SARGENT	P42741	SARGENT #63-41-101
YKK OR KAWNEER	2	CLOSER	YKK	H6104	LCN 4041 5MC
YKK OR KAWNEER	2	CONTINUOUS HINGE	YKK	H20100	HAGER 05020-40
YKK OR KAWNEER	1	THRESHOLD	YKK	E90407	KAWNEER 037862
YKK OR KAWNEER	1	DOOR SWEEP	YKK	H7107	KAWNEER 200795
YKK OR KAWNEER	1	PUSH/PULL	YKK	H1141	KAWNEER 137703
YKK OR KAWNEER	1	DOOR CLOSER	LCN CLOSERS	H6104	LCN CLOSERS #4041
YKK OR KAWNEER	1 SET	QS PIVOTS	YKK	H2101RH/H2102LH	KAWNEER 050322, 050326 (RH)
YKK OR KAWNEER	1	FLOOR STOP	ROCKWOOD	P71202626	ROCKWOOD 483X-US32D
YKK OR KAWNEER	1	PULL	YKK	H1541	KAWNEER 137730
YKK OR KAWNEER	1	EXIT DEVICE	YKK	P54453	DOMFALCON 1690
YKK OR KAWNEER	1	DOOR CLOSER	LCN CLOSERS	H6104	LCN CLOSERS #4041
YKK OR KAWNEER	1	CONTINUOUS HINGE	YKK	H20100	HAGER 05020-40
YKK OR KAWNEER	1	THRESHOLD	YKK	E90407	KAWNEER 037862
YKK OR KAWNEER	1	RIM CYLINDER	SARGENT	P42741	SARGENT #63-34
YKK OR KAWNEER	1	DOOR SWEEP	YKK	H7107	KAWNEER 200795
YKK OR KAWNEER	1	FLOOR STOP	ROCKWOOD	P71202626	ROCKWOOD 483X-US32D
YKK OR KAWNEER	1	DOOR CLOSER	LCN CLOSERS	H6104	LCN CLOSERS #4041
YKK OR KAWNEER	1	TOE GUARD	NATIONAL GUARD	P79939	NATIONAL GUARD #RRB X 36"
YKK OR KAWNEER	1 SET	DOOR PUSH	YKK	K11020	ROCKWOOD BF15947-2
YKK OR KAWNEER	1 SET	DOOR PULL	YKK	P111020	ROCKWOOD BF15947-2
YKK OR KAWNEER	1	FINGER GUARD	YKK	H7104	KAWNEER 038365
YKK OR KAWNEER	1 SET	CENTER PIVOT HINGE	YKK	H2502/H2401	KAWNEER 027468, 037942, 050351, 060370, 047600
YKK OR KAWNEER	1	EXIT DEVICE	YKK	P54453	DOMFALCON 1690
YKK OR KAWNEER	1	DOOR CLOSER	LCN CLOSERS	H6104	LCN CLOSERS #4041
YKK OR KAWNEER	1	CONTINUOUS HINGE	YKK	H20100	HAGER 05020-40
YKK OR KAWNEER	1	THRESHOLD	YKK	E90407	KAWNEER 037862
YKK OR KAWNEER	2	RIM CYLINDER	SARGENT	P42741	SARGENT #63-34
YKK OR KAWNEER	1	DOOR SWEEP	YKK	H7107	KAWNEER 200795
YKK OR KAWNEER	1	FLOOR STOP	ROCKWOOD	P71202626	ROCKWOOD 483X-US32D
YKK OR KAWNEER	2	DOOR PUSH/PULL	YKK	H1141	KAWNEER 137703
YKK OR KAWNEER	2	DOOR CLOSER	LCN CLOSERS	H6104	LCN CLOSERS #4041
YKK OR KAWNEER	2 SETS	QS PIVOTS	YKK	H2101RH/H2102LH	KAWNEER 050322, 050323, 050506
YKK OR KAWNEER	2	FLOOR STOP	ROCKWOOD	P71202626	ROCKWOOD 483X-US32D
YKK OR KAWNEER	1	PUSH/PULL	YKK	H1141	KAWNEER 137703
YKK OR KAWNEER	1	DOOR CLOSER	LCN CLOSERS	H6104	LCN CLOSERS #4041
YKK OR KAWNEER	1 SET	QS PIVOTS	YKK	H2101RH/H2102LH	KAWNEER 050322, 050326 (RH)
LOOKNET	3	STANDARD HINGE	MCKINNEY	TA2314 4-1/2" X 4-1/2" (NRP) US32D	
LOOKNET	1	KEYPAD CYLINDRICAL LOCK	SARGENT	21 28-KP10G77 LL US26D MK	
LOOKNET	1	DOOR CLOSER	SARGENT	351 CP SH EN	
LOOKNET	1	KICK PLATE	ROCKWOOD	K1050 36" X 34" US32D 4BE	
LOOKNET	1	WALL DOOR STOP	ROCKWOOD	403 US26D	
LOOKNET	1	WEATHER STRIPPING	PEMKO	588 D 17	
LOOKNET	3	STANDARD HINGE	MCKINNEY	TA2714 4-1/2" X 4-1/2" (NRP) X US26D	
LOOKNET	1	LOCKSET	SARGENT	28 60-10G06 LL X US26D	
LOOKNET	1	DOOR CLOSER	SARGENT	351 CP SH EN	
LOOKNET	1	KICK PLATE	ROCKWOOD	K1050 36" X 34" US32D 4BE	
LOOKNET	3	SILENCER	ROCKWOOD	608	
LOOKNET	1	WALL DOOR STOP	ROCKWOOD	403 US26D	
KEC	1	DOOR PULL	HAGER COMPANIES	6" ALUM (US26)	
ELIASON	2	DOOR PULL	HAGER COMPANIES	6" ALLUM (US32D) MODEL 3E	
LOOKNET	1	PANIC HINGE	PEMKO	CMF83 HD X ALUM X TEK	
LOOKNET	1	LOCKSET	SARGENT	28-1160-10604 LL US26D MK	
LOOKNET	1	LOCK GUARD	ROCKWOOD	321 X US32D	
LOOKNET	1	THRESHOLD	PEMKO	171A	
LOOKNET	1	DOOR SWEEP	PEMKO	315CN (TKSPB)	
LOOKNET	1 SET	WEATHER STRIPPING	PEMKO	303AS (TKSPB)	
LOOKNET	1	DRIP TOP SWEEP	PEMKO	346C (TKSPB)	
LOOKNET	3	DOOR SILENCER	ROCKWOOD	608	
LOOKNET	1	DOOR CLOSER	SARGENT	351 CP SH EN	
LOOKNET	1	KICK PLATE	ROCKWOOD	K1050 36" X 34" US32D 4BE	
LOOKNET	3	STANDARD HINGE	MCKINNEY	TA2714 4-1/2" X 4-1/2" (NRP) X US26D	
LOOKNET	1	PUSH PLATE	ROCKWOOD	70E US32DMS	
LOOKNET	1	PULL PLATE	ROCKWOOD	BF110 X 70C US32DMS TYPE 1	
LOOKNET	1	KICK PLATE	SARGENT	351 CP SH EN	
LOOKNET	3	SILENCER	ROCKWOOD	608	
LOOKNET	1	KICK PLATE	ROCKWOOD	K1050 36" X 34" US32D 4BE - PUSH SIDE	
LOOKNET	1	WALL STOP	ROCKWOOD	403 US26D	
LOOKNET	6	STANDARD HINGE	MCKINNEY	TA3386 4-1/2" X 4-1/2" (NRP) US32D	
LOOKNET	2	FLUSH BOLT	ROCKWOOD	655 US26D	
LOOKNET	1	LOCKSET	SARGENT	28-1160-10604 LL US26D MK	
LOOKNET	1	SURFACE CLOSER	SARGENT	351 CP SH EN	
LOOKNET	2	KICK PLATE	ROCKWOOD	K1050 36" X 34" US32D 4BE	
LOOKNET	1	LOCK PROTECTOR	ROCKWOOD	321 US32D	
LOOKNET	1	THRESHOLD	PEMKO	171A	
LOOKNET	1	WEATHER STRIPPING	PEMKO	303AS (TKSPB)	
LOOKNET	2	WEATHER STRIPPING	PEMKO	315CN (TKSPB)	
LOOKNET	1	MISCELLANEOUS ITEM	PEMKO	346A 78"	

DOOR NUMBER	DESCRIPTION	SIZE			DOOR TYPE	DOOR MATERIAL	FINISH	HARDWARE	FRAME				REMARKS	
		HEIGHT	WIDTH	THICK					HEAD	JAMB	SILL	FINISH		
1	DINING EXIT	7'-0"	2'-9"	1-3/4"	6	ALUMINUM W GLASS	DARK BRONZE	SET #01	ALUMINUM	A-801A	A-801B	A-801C	DARK BRONZE	ADJUST CLOSER TO OPEN 95 DEGREES, MAX.
2	ENTRY (PAIR)	7'-0"	6'-0"	1-3/4"	6	ALUMINUM W GLASS	DARK BRONZE	SET #01	ALUMINUM	A-801A	A-801B	A-801C	DARK BRONZE	ADJUST CLOSER TO OPEN 95 DEGREES, MAX.
3	VESTIBULE (PAIR)	7'-0"	6'-0"	1-3/4"	6	ALUMINUM W GLASS	DARK BRONZE	SET #06	ALUMINUM	A-801A	A-801B	A-801C	DARK BRONZE	NO LOCKING DEVICE. ADJUST CLOSER TO OPEN 95 DEGREES, MAX.
4	RESTROOM	6'-8"	3'-0"	1-5/8"	1	S. C. WOOD	PL-2	SET #18	HOLLOW METAL	A-801	A-801	A-801	PT-4	UREA FREE. ADJUST THICKNESS TO ACCEPT LAMINATE
5	RESTROOM	6'-8"	3'-0"	1-5/8"	1	S. C. WOOD	PL-2	SET #18	HOLLOW METAL	A-801	A-801	A-801	PT-4	UREA FREE. ADJUST THICKNESS TO ACCEPT LAMINATE
6	MULTIPURPOSE	6'-8"	3'-0"	1-3/4"	2	INSULATED METAL	PT-4	SET #09	HOLLOW METAL	A-801	A-801	A-801	PT-6	PROVIDE 3/4" X 3/4" KICK PLATE ON KITCHEN SIDE. PROVIDE HOLD-OPEN ON CLOSER. PROVIDE HSWAD.
7	OFFICE	6'-8"	3'-0"	1-3/4"	2	INSULATED METAL	PT-4	SET #09	HOLLOW METAL	A-801	A-801	A-801	PT-6	PROVIDE 3/4" X 3/4" KICK PLATE ON KITCHEN SIDE. PROVIDE HOLD-OPEN ON CLOSER. PROVIDE HSWAD.
8	SERVICE	6'-8"	4'-0"	1-3/4"			SEE ZIGMAN PRODUCTS PACKAGE	(none)	SEE ZIGMAN PRODUCTS PACKAGE	A-801	A-801	A-801	PT-6	CONTACT ZIGMAN PRODUCTS CO FOR COMPLETE FRP DOOR ASSEMBLY PACKAGE. (888)-884-1303. PROVIDE 3/4" X 3/4" KICK PLATE ON KITCHEN SIDE. PROVIDE 3/4" X 45" KICK PLATE ON SERVICE YARD SIDE.
9	LOADING	7'-0"	4'-0"	1-3/4"	3	SEE ZIGMAN PRODUCTS PACKAGE	SEE ZIGMAN PRODUCTS PACKAGE	(none)	SEE ZIGMAN PRODUCTS PACKAGE	A-801	A-801	A-801	PT-9	CONTACT ZIGMAN PRODUCTS CO FOR COMPLETE FRP DOOR ASSEMBLY PACKAGE. (888)-884-1303. PROVIDE 3/4" X 44" KICK PLATE ON KITCHEN SIDE. PROVIDE 3/4" X 45" KICK PLATE ON SERVICE YARD SIDE.
10	PLAY AREA	7'-0"	3'-0"	1-3/4"	6	ALUMINUM W GLASS	DARK BRONZE	SET #04	ALUMINUM	A-801QR	A-801KL	A-801	DARK BRONZE	UNDERCUT DOOR 2" FOR TOE GUARD. NO LOCKING DEVICE. ADJUST CLOSER TO OPEN 95 DEGREES, MAX.
11	KITCHEN	6'-8"	3'-0"	3/4"	4	STAINLESS STEEL	BRUSHED	SET #11	STAINLESS STEEL	A-801B	A-801B	A-801B	BRUSHED	MANUFACTURED BY ELIASON. FRAME CONSISTS OF STAINLESS STEEL CHANNEL WRAPPED AROUND JAMB.
12	MOBILE ENTRY	7'-0"	3'-0"	1-3/4"	6	ALUMINUM W GLASS	DARK BRONZE	SET #03	ALUMINUM	A-801A	A-801B	A-801C	DARK BRONZE	ADJUST CLOSER TO OPEN 95 DEGREES, MAX.
13	TRASH ENCLOSURE	7'-0"	3'-4"	1-0-3/4"	5	INSULATED METAL	PT-9	SET #13	HOLLOW METAL	A-801	A-801	A-801	PT-9	LOCATED IN STORAGE ROOM AT REFUSE ENCLOSURE. PROVIDE 4" HEAD FRAME



**Chick-fil-A**  
5200 Buffington Road  
Atlanta, Georgia 30349-2998

**INTERPLAN**  
ARCHITECTURE  
ENGINEERING  
INTERIOR DESIGN  
PROJECT MANAGEMENT

604 COURTLAND STREET SUITE 100  
ORLANDO, FLORIDA 32804  
PH 407.645.5008  
FX 407.629.9124

SEAL: THIS DOCUMENT IS NOT FOR CONSTRUCTION UNLESS THE ARCHITECT'S OR ENGINEER'S SIGNATURE AND SEAL APPEAR BELOW.

**CHICK-FIL-A**  
**SAR** South Cobb Drive FSR  
3100 South Cobb Dr SE, Smyrna, GA 30080

**FSR# 00810**

REVISION SCHEDULE	NO.	DATE	DESCRIPTION

CONSULTANT PROJECT # 2017.0165  
PRINTED FOR BID  
DATE September 06, 2017  
DRAWN BY AD

Information contained on this drawing and to all rights thereunder shall remain the property of the architect or engineer. No part of this drawing shall be reproduced or transmitted in any form or by any means, electronic, mechanical, photocopying, recording, or by any information storage and retrieval system, without the prior written permission of the architect or engineer.

SHEET 1 OF 1  
DOOR AND HARDWARE SCHEDULES  
SHEET NUMBER

**A-801**

Order Plans @ WWW.LDIDLine.com

2/5/2016 10:29:48 PM