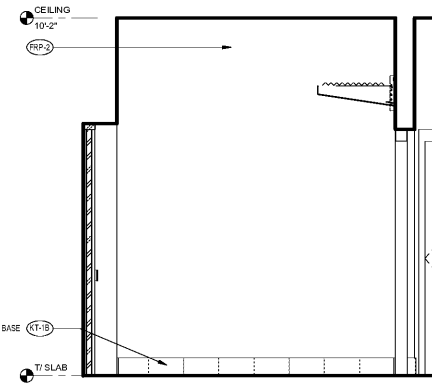
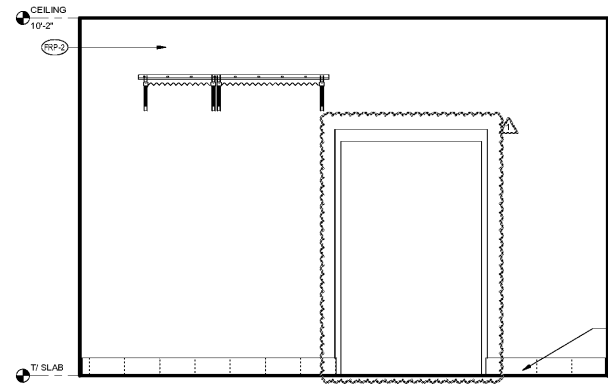


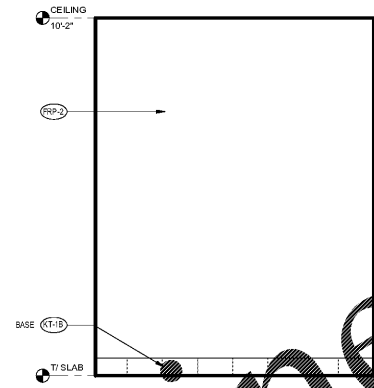
D4 INTERIOR ELEVATION - SERVICE
N.T.S.



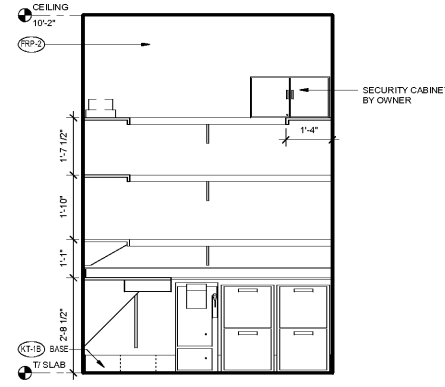
D3 INTERIOR ELEVATION - SERVICE
1/2" = 1'-0"



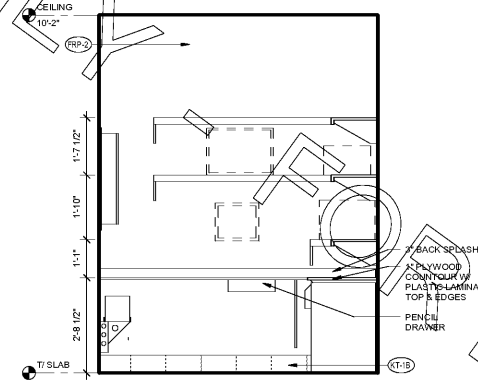
D2 INTERIOR ELEVATION - SERVICE
1/2" = 1'-0"



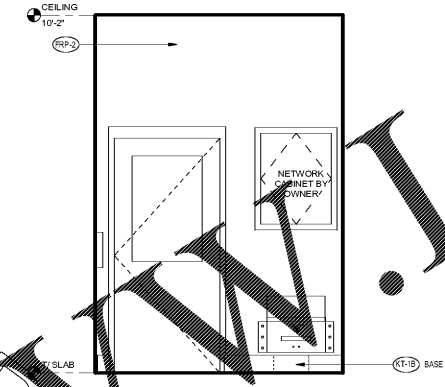
D1 INTERIOR ELEVATION - SERVICE
1/2" = 1'-0"



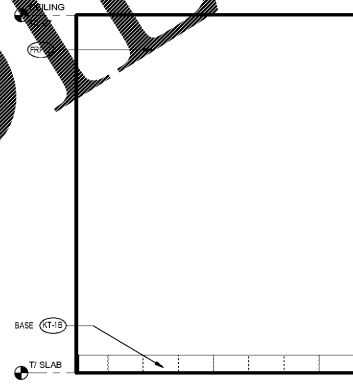
C4 INTERIOR ELEVATION - OFFICE
1/2" = 1'-0"



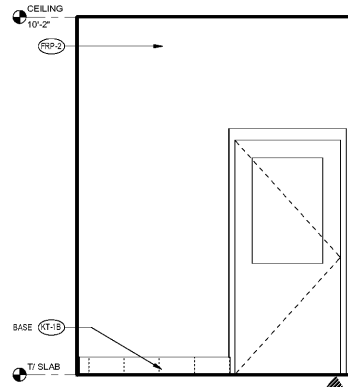
C3 INTERIOR ELEVATION - OFFICE
1/2" = 1'-0"



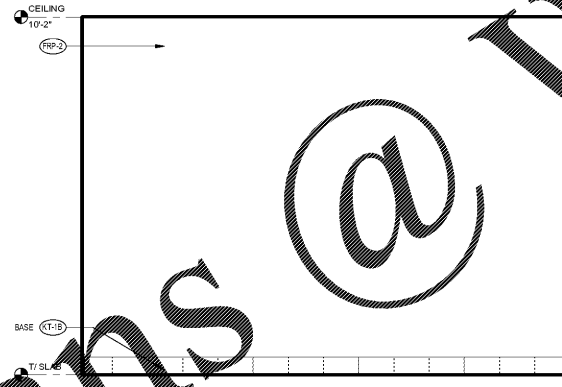
C2 INTERIOR ELEVATION - OFFICE
1/2" = 1'-0"



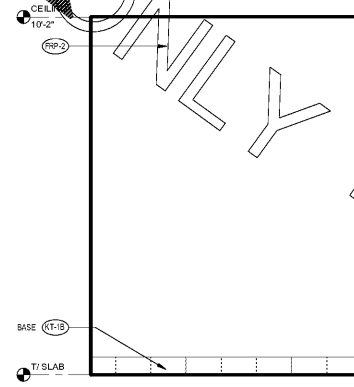
C1 INTERIOR ELEVATION - OFFICE
1/2" = 1'-0"



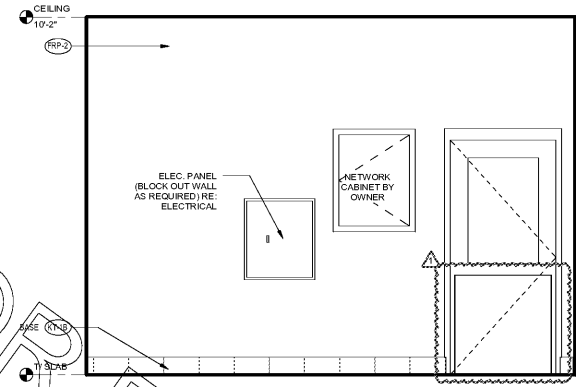
B4 INTERIOR ELEVATION - MULTI-PURPOSE
1/2" = 1'-0"



B3 INTERIOR ELEVATION - MULTI-PURPOSE
1/2" = 1'-0"



B2 INTERIOR ELEVATION - MULTI-PURPOSE
1/2" = 1'-0"



B1 INTERIOR ELEVATION - MULTI-PURPOSE
1/2" = 1'-0"



Chick-fil-A
5200 Buffington Road
Atlanta, Georgia 30349-2998

INTERPLAN
ARCHITECTURE
ENGINEERING
INTERIOR DESIGN
PROJECT MANAGEMENT

604 COURTLAND STREET
SUITE 100
ORLANDO, FLORIDA 32804
PH 407.645.5008
FX 407.629.9124

SEAL:
THIS DOCUMENT IS NOT FOR CONSTRUCTION
UNLESS THE ARCHITECT OR ENGINEER
SIGNATURE AND SEAL APPEAR BELOW.

CHICK-FIL-A
SAR South Cobb Drive FSR
3100 South Cobb Dr SE, Smyrna, GA 30080

FSR# 00810

REVISION SCHEDULE		
NO.	DATE	DESCRIPTION
1	11/06/17	COORDINATION REVISIONS

CONSULTANT PROJECT # 2017.0165
PRINTED FOR BID
DATE September 06, 2017
DRAWN BY AD

Information contained on this drawing and in all digital files
herein is the property of the project owner and shall not be disclosed to
any third party without the written or verbal consent from
authorized project representatives.

SHEET
INTERIOR ELEVATIONS
SHEET NUMBER
A-605L

2/5/2018 12:29:31 PM

COPYRIGHT © 2017 INTERPLAN, LLC. REPEATS COPYRIGHT & OTHER RIGHTS RESTRICTING THESE DOCUMENTS TO THE ORIGINAL SET OF PAPERS FOR WHICH THEY WERE PREPARED. REPRODUCTION, CHANGES OR ADJUSTMENTS ARE PROHIBITED.