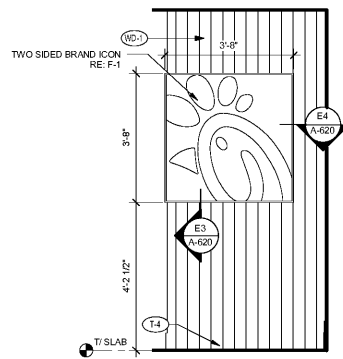
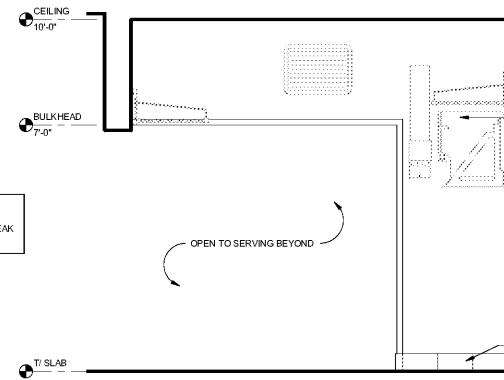


D4 INTERIOR ELEVATION - DINING  
1/2" = 1'-0"

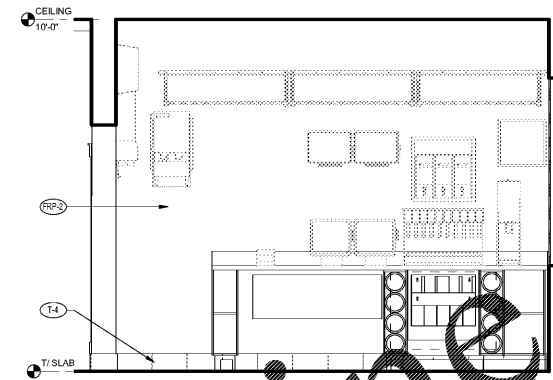


D3 INTERIOR ELEVATION - DINING  
1/2" = 1'-0"

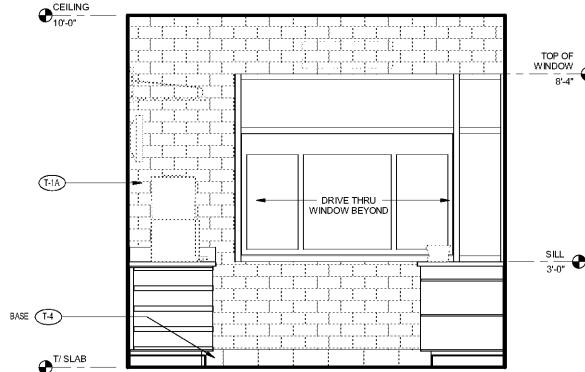
BRAND ICON DIRECTION:  
1. WHEN ENTERING THE STORE FROM THE MAIN ENTRY, THE SIGN SHOULD POINT TO THE RIGHT.



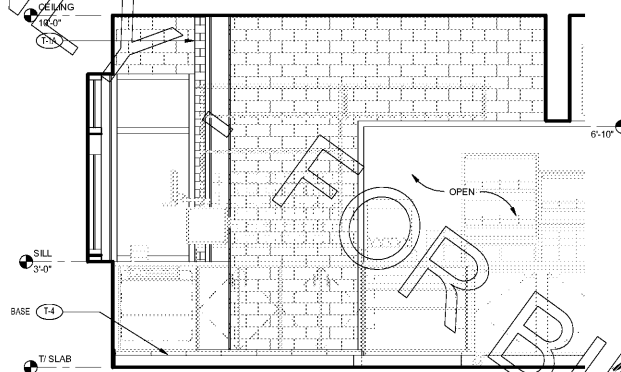
D2 INTERIOR ELEVATION - DRIVE THRU  
1/2" = 1'-0"



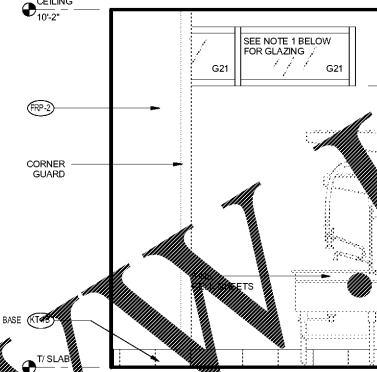
D1 INTERIOR ELEVATION - DRIVE THRU  
1/2" = 1'-0"



C4 INTERIOR ELEVATION - DRIVE THRU  
1/2" = 1'-0"

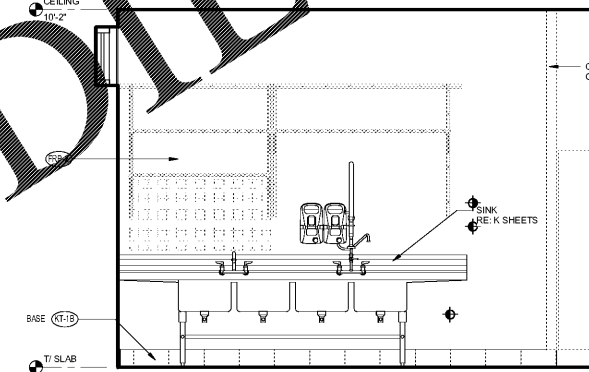


C3 INTERIOR ELEVATION - DRIVE THRU  
1/2" = 1'-0"

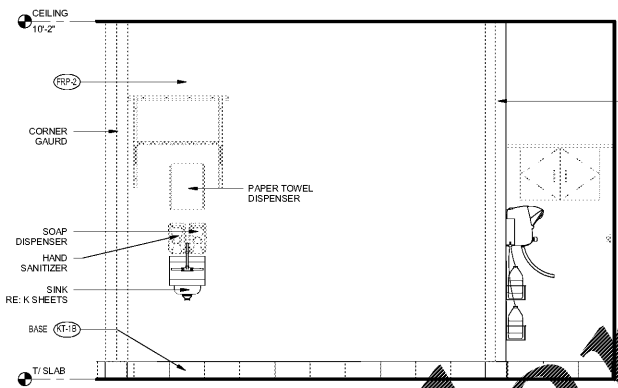


C2 INTERIOR ELEVATION - KITCHEN  
1/2" = 1'-0"

NOTE:  
1. GLAZING SPECIFICATION AT KITCHEN TRANSOMS IS SITE SPECIFIC AND TO BE DETERMINED VIA A FIELD VERIFICATION FOR REQUIRED OPTACITY.

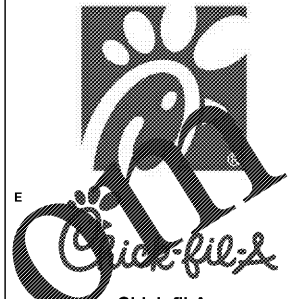


C1 INTERIOR ELEVATION - KITCHEN  
1/2" = 1'-0"



B4 INTERIOR ELEVATION - KITCHEN  
1/2" = 1'-0"

NOTE:  
1. PROVIDE 5" HIGH CEMENTITIOUS BOARD SUBSTRATE AT BASE OF ALL WALLS IN DINING ROOM AND VESTIBULE.  
2. PROVIDE 12" HIGH CEMENTITIOUS BOARD SUBSTRATE AT BASE OF ALL WALLS IN KITCHEN.  
3. PROVIDE CEMENTITIOUS BOARD SUBSTRATE FOR THE FULL HEIGHT OF TILE AT ALL WALLS WITH WALL TILE.  
4. AT WAINSCOT LOCATIONS, PROVIDE 5" HIGH CEMENTITIOUS BOARD BEHIND TILE BASE, THEN PLYWOOD SUBSTRATE TO TOP OF WAINSCOT, THEN GYPSUM BOARD TO CEILING.



Chick-fil-A  
5200 Buffington Road  
Atlanta, Georgia 30349-2998

INTERPLAN  
ARCHITECTURE  
ENGINEERING  
INTERIOR DESIGN  
PROJECT MANAGEMENT

604 COURTLAND STREET  
SUITE 100  
ORLANDO, FLORIDA 32804  
PH 407.645.5008  
FX 407.629.9124

SEAL:  
THIS DOCUMENT IS NOT FOR CONSTRUCTION  
UNLESS THE ARCHITECT'S OR ENGINEER'S  
SIGNATURE AND SEAL APPEAR BELOW.

**CHICK-FIL-A**  
**SAR South Cobb Drive FSR**  
3100 South Cobb Dr SE, Smyrna, GA 30080

**FSR# 00810**

REVISION SCHEDULE  
NO. DATE DESCRIPTION

CONSULTANT PROJECT # 2017.0165  
PRINTED FOR BID  
DATE September 06, 2017  
DRAWN BY AD

Information contained on this drawing and in all digital files  
provided for electronic project files shall be considered as  
any original manual drawing unless otherwise noted or stated on  
authorized project correspondence.

SHEET  
INTERIOR ELEVATIONS

SHEET NUMBER  
**A-603L**

INTERIOR ELEVATION GENERAL NOTES  
A.1 REFER TO SHEET A-422 FOR WAINSCOT DETAILS.

2/5/2018 1:28:15 PM

COPYRIGHT © 2017 INTERPLAN, LLC. REPEATS COPYRIGHT & OTHER RIGHTS RESPECTING THESE DOCUMENTS TO THE ORIGINAL SET OF PAPERS FOR WHICH THEY WERE PREPARED. REPRODUCTION, CHANGE OR ASSIMILATION ARE PROHIBITED.